



NHTSA# 18V-460

Date of Publication: July 2018

TC# 2018-372

Job Code 9901406

Series/Flat Rate RC005 Inspect Only .1 hour
RC013 Inspect & Repair .4 hour

ACTION REQUIRED

Inspect trailer for a generator exhaust pipe.
Install generator exhaust pipe if missing.

AFFECTED UNITS

2018 Octane Travel Trailers
T30F J1VF0135-0152
T32H J1VH0053-0110



PARTS KIT
18V-460

- 1 Generator exhaust pipe,
- 1 exhaust clamp,
- 1 exhaust hanger
- 1 screw w/washer 1" self-tapping

Misc. Tools and Supplies

Screw gun with #2 square drive bit, ratchet with 1/2" deepwell socket, creeper, safety glasses

INSPECTION STEP

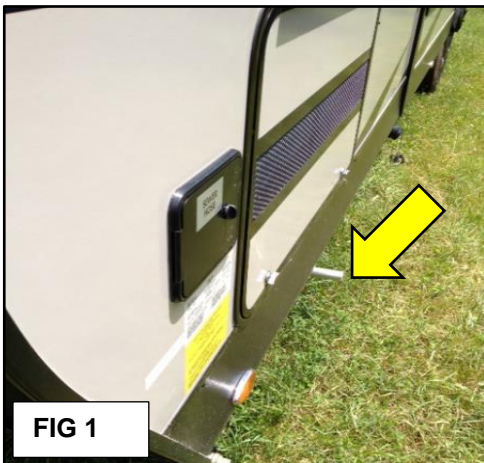


FIG 1: Inspect the trailer for an exhaust pipe extending out from under the trailer in the area of the generator compartment near the front driver side of the trailer (arrow).

FIG 2: Exhaust pipe should be to the right side of the generator compartment and should stick out beyond the side of the trailer a minimum of 2 inches.

If the generator exhaust pipe is present, nothing further action is required.

When the generator exhaust pipe is not present, continue with the following installation instructions.

INSTRUCTIONS



FIG 3

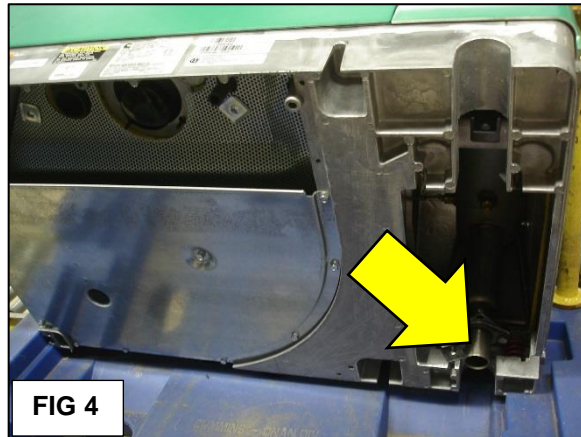


FIG 4

FIG 3: Generator installed on the Octane.

FIG 4: Bottom view of the generator

Octane generator exhaust pipe "stub" coming out the bottom of the generator.

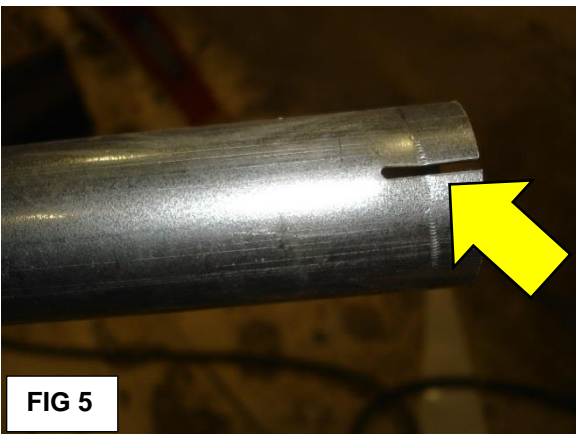


FIG 5

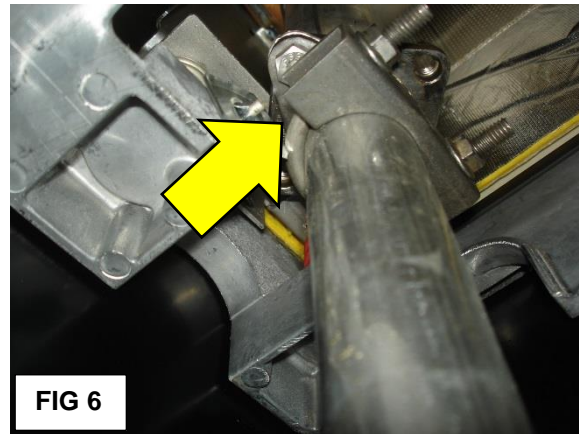


FIG 6

FIG 5: The split end of the exhaust pipe (arrow) goes over the exhaust stub coming off the generator. Exhaust pipe must be installed from underneath the trailer.

FIG 6: Install the exhaust clamp (arrow) to the pipe where it overlaps the stub from the generator. Tighten the nuts using the 1/2" socket and ratchet. Tighten until snug.

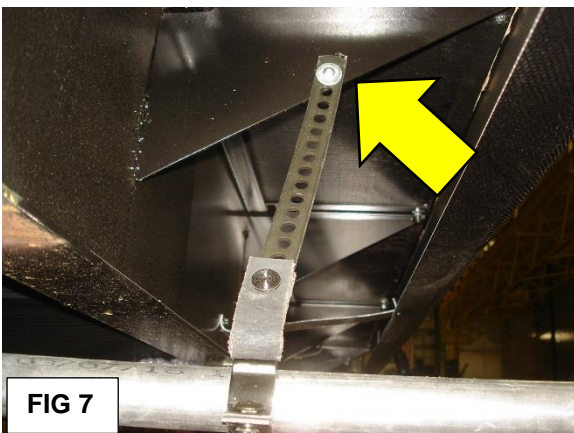


FIG 7

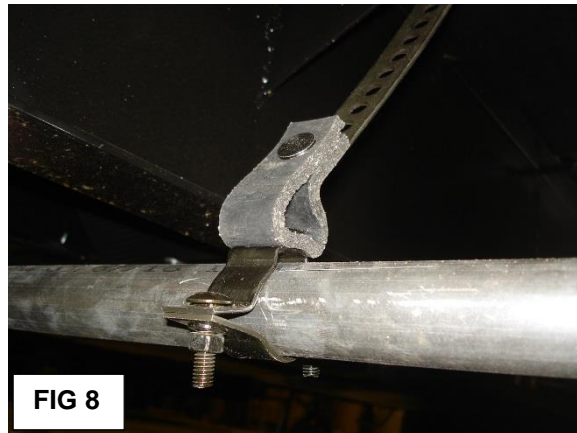


FIG 8

FIG 7: Slide the exhaust hanger on to the exhaust pipe.

Position the hanger strap so it will reach the outrigger (arrow).

FIG 8: Tighten the nuts snugly on the hanger clamp using the 1/2" socket and ratchet.

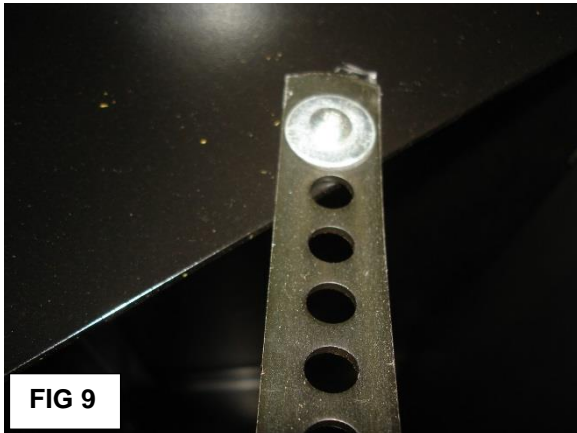


FIG 9: Attach the exhaust hanger strap to the outrigger using the screw/washer included in the kit. Use top hole position as shown. The Exhaust pipe should extend out past the side of the trailer approximately 2 inches and positioned so condensation will drain out.