



Tiled Slide Cover Bolts

Number: FT-ESB-0012-REL

Issued Date: 01-MAY-2018

Issued by: Ed Brunson

Approved by: 

Priority: Urgent

High X

Low

1.0 Description of Affected Products:

Units with curved entry steps.

2.0 Affected Units:

Realm: 9048-9049, 9051, 9053-9057

IH: 6631-6641, 6643-6644

3.0 Issue:

There is a possibility of missing, or not enough bolts installed on the tiled cover above the sliding step well cover.

4.0 Solution:

Install missing screws.

5.0 Items Needed:

Drill with 1/2" Chuck

T-30 Torx Bit and Socket Adaptor

9/16", 3/8 Drive Socket

1/2" Tile Hole Saw

7/32" Drill Bit

Torque Wrench

2' x 2' carpet or cardboard

Masking tape

Marker or Pen

Color Matched Grout

6.0 References:

6.1 Foretravel Part Number: 32321 - SCREW,FLOOR BOARD,1/4 X 2"TORX
(Tiffco Part Number: 7130 - Torx Drive Floor Screw, 1/4 x 2)



7.0 Instructions:

7.1 Visual Inspection

- 7.1.1 Ensure unit is securely parked and level with engine off and enough clearance to extend the passenger front slide room.
- 7.1.2 Extend the Passenger Front Slide Room.
- 7.1.3 Extend the passenger chair as far forward as possible.
- 7.1.4 Raise the back skirt of the chair and visually inspect under Driver's side of Passenger Co-Pilot Chair for four (4) round holes in tile that are filled with grout. If needed, extend the passenger chair as far rearward as possible and raise footrest for further inspection. *See Figure: 1*
- 7.1.5 If unit has four (4) round holes in tile that are filled with grout, then no further action is needed. If not, proceed to section 7.2 of this document.



Area to be
Checked



4 Places
Correct



None or
not 4
Places
Incorrect

Figure: 1
(Visual Inspection)



7.2 Repair

- 7.2.1 Ensure unit is securely parked and level with engine off and enough clearance to extend the passenger front slide room.
- 7.2.2 Extend the Passenger Front Slide Room.
- 7.2.3 Place a two (2) foot by two (2) foot protective cover such as cardboard or carpet over the flooring directly behind the Passenger Co-Pilot Chair.
- 7.2.4 Ensure the Passenger Co-Pilot Chair is centered within its travel range front to back.
- 7.2.5 Raise the back skirt of the chair and locate the two (2) nuts, lock washers, and flat washers that hold down the rear of the base. Remove and save for later.
See Figure: 2
- 7.2.6 Raise footrest and locate the two (2) nuts, lock washers, and flat washers that hold down the front of the base. Remove and save for later. *See Figure: 2*
- 7.2.7 Once fasteners are removed, have two (2) people lift chair straight up as to not damage the threads on the floor bolts and set towards the rear of the coach on the protective cover. Save all fasteners and chair for later use.

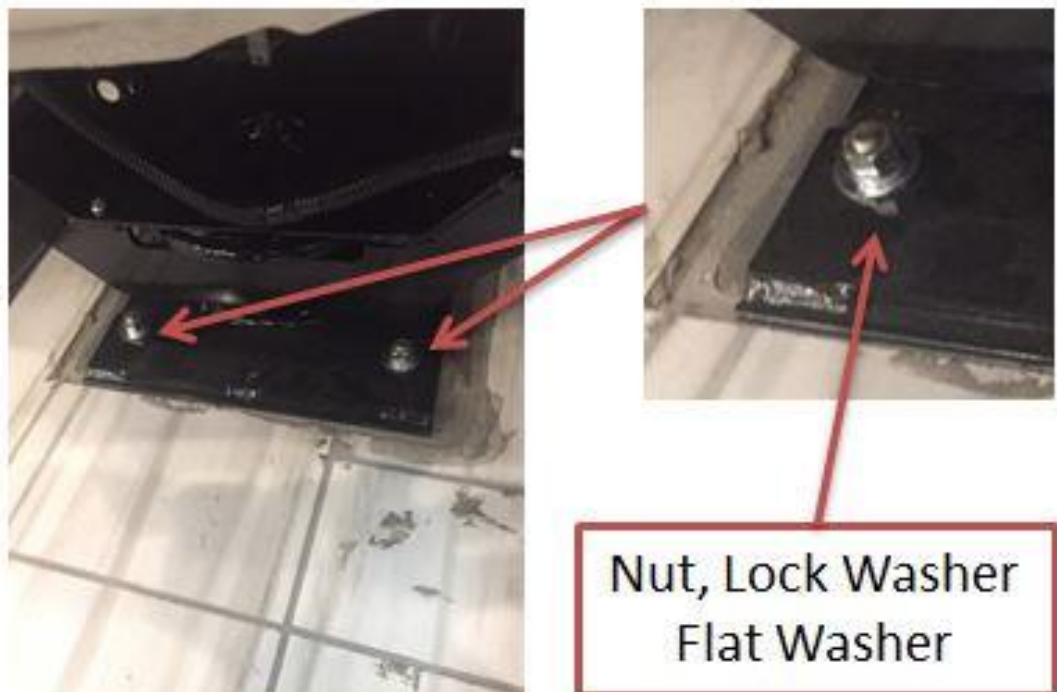


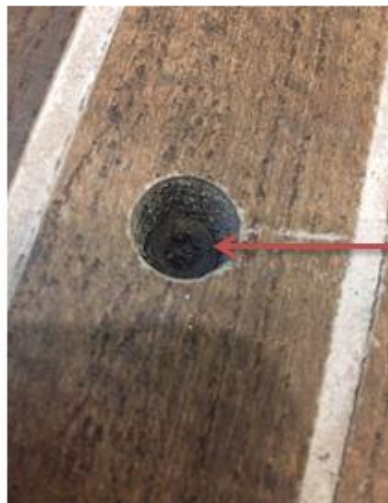
Figure: 2
(Chair Removal)



- 7.2.8** Once chair is removed cover narrow rectangular tile to be drilled with masking tape. *See Figure: 3*
- 7.2.9** Layout hole locations on tape with a marker or pen. Layout of holes will start at back of tile closest to rear of coach, and progress forward centered on narrow tile. The first hole will be 1" in from grout line with the remaining three (3) holes to be spaced 7" (+/- 1") apart, being sure to avoid any grout lines. *See Figure: 3*
- 7.2.10** Drill four (4) holes down to steel through tile and mortar only with 1/2" tile hole saw. ****Follow hole saw manufacturer's directions to avoid damaging tile.****
- 7.2.11** Carefully remove all debris out of 1/2" holes.
- 7.2.12** Locate center of 1/2" hole and drill a 7/32" hole through steel. *See Figure: 3*
- 7.2.13** Carefully remove all debris out of 1/2" holes.
- 7.2.14** Install 1/4 x 2 Torx drive floor screws (Foretravel PN-32321) in all four (4) locations and torque to 91 in-lbs. (7.6 ft-lbs.). *See Figure 3.*
- 7.2.15** Use pre-mixed color matched grout to fill holes. This will cover the Torx drive screws. *See Figure 1.*
- 7.2.16** With two (2) people, replace passenger Co-Pilot Chair. Place chair strait down over the floor bolts as to not damage the threads.
- 7.2.17** Replace the two (2) nuts, lock washers, and flat washers that hold down the front of the base and torque to 30 ft-lbs. *See Figure: 2.*
- 7.2.18** Replace the two (2) nuts, lock washers, and flat washers that hold down the back of the base and torque to 30 ft-lbs. *See Figure: 2.*



Tile Hole Saw



Torx Screw

Figure: 3
(Hole Layout)

8.0 Contact Information:

**Foretravel Service Director
1221 NW Stallings Dr.
Nacogdoches, TX 75964**

(800) 955-6226