

Driveshaft Inspection and Replacement

Step 1: Locate the driveshaft between the traction motor and rear axle.

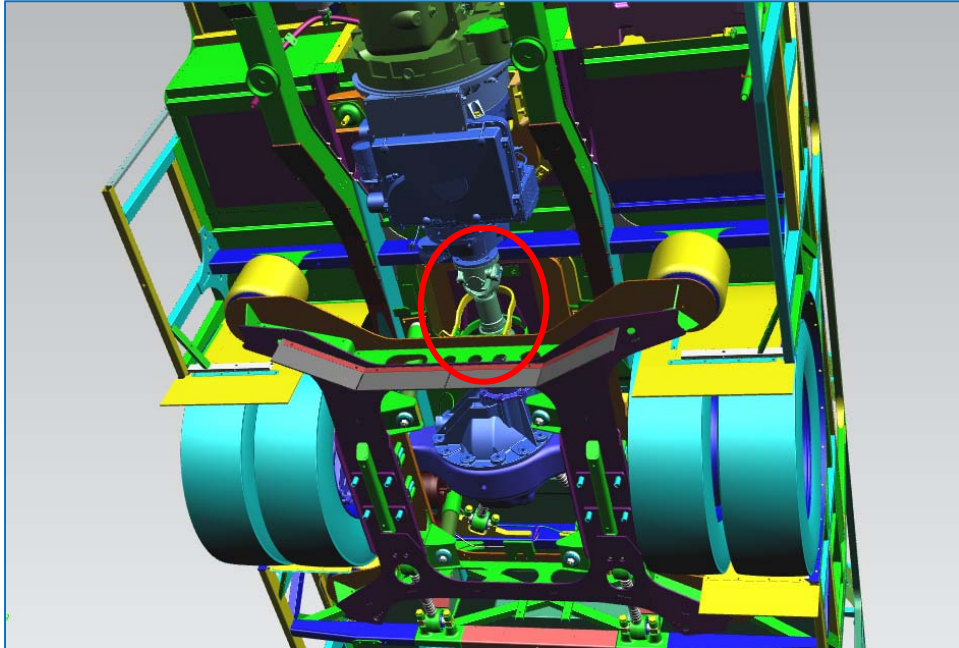


Figure 1: Rear Underside of Bus

Step 2: Complete the inspection sheet which can be found at the end of this Instruction while reading steps 3 through 6. Driveshafts that are **APPROVED** do not need to be replaced and driveshafts that are **NOT APPROVED** will need to be replaced.

Step3: Check for metal dust caps.

Ways to identify if the cap is metal:

- Tack welds on the top of the cap. See figures 2 and 3.
- There are no raised letters on the top of the cap.
- The cap attracts a magnet.

If the cap is metal, then the driveshaft is **APPROVED**. Record that the cap is metal on the inspection sheet and proceed to step 7.

If the cap is plastic, proceed with the inspection to determine status.

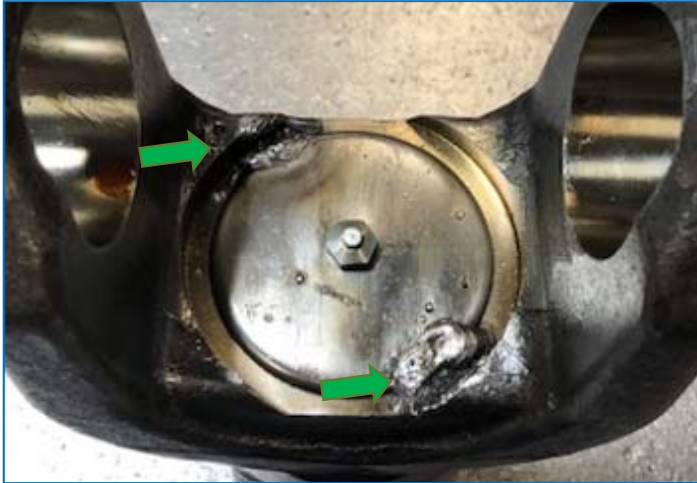


Figure 2: Top View of Metal Cap

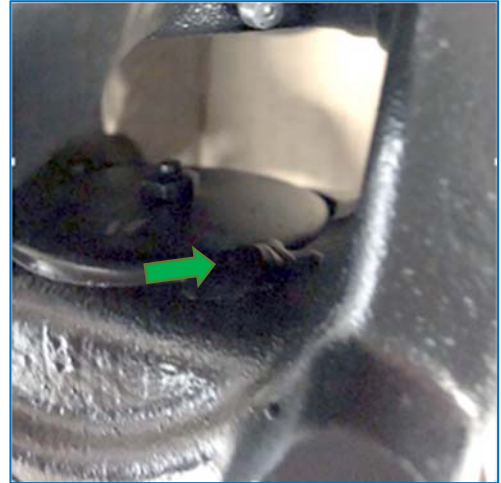


Figure 3: Side View of Metal Cap

Step 4: If plastic cap is present, visually check for style of yoke and record on inspection sheet. Replace the driveshaft when materials are available.

Style A – Plastic dust cap with balancing lugs on driveshaft yoke = **NOT APPROVED**

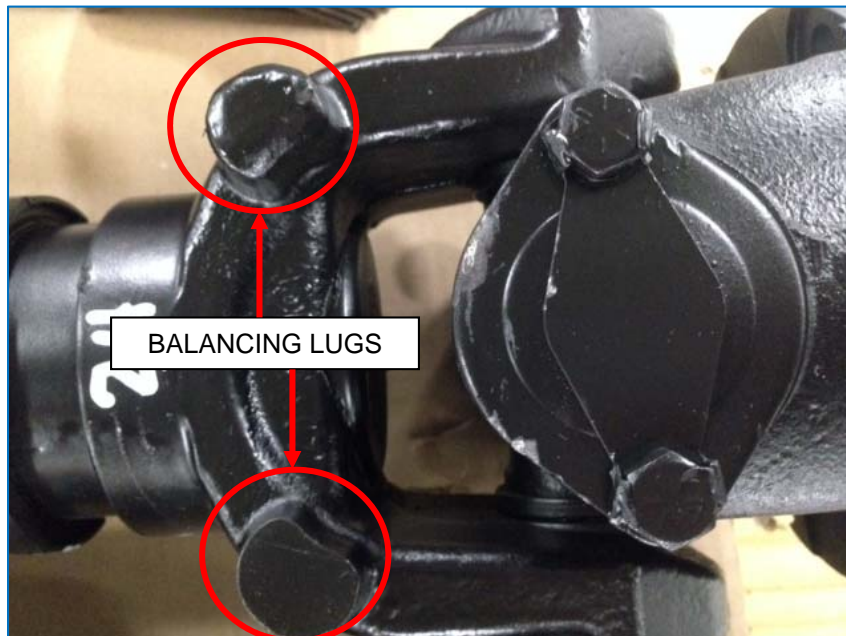


Figure 4: Style A Driveshaft



Style B – Plastic dust cap and thin wall = **NOT APPROVED**

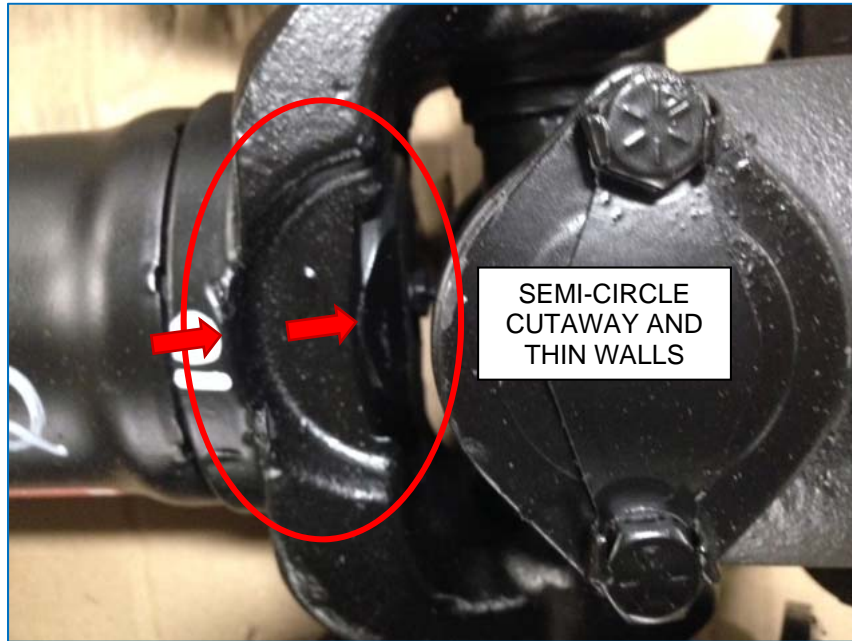


Figure 5: Style B Driveshaft

Style C – Plastic dust cap with U-shaped yoke = **NOT APPROVED**

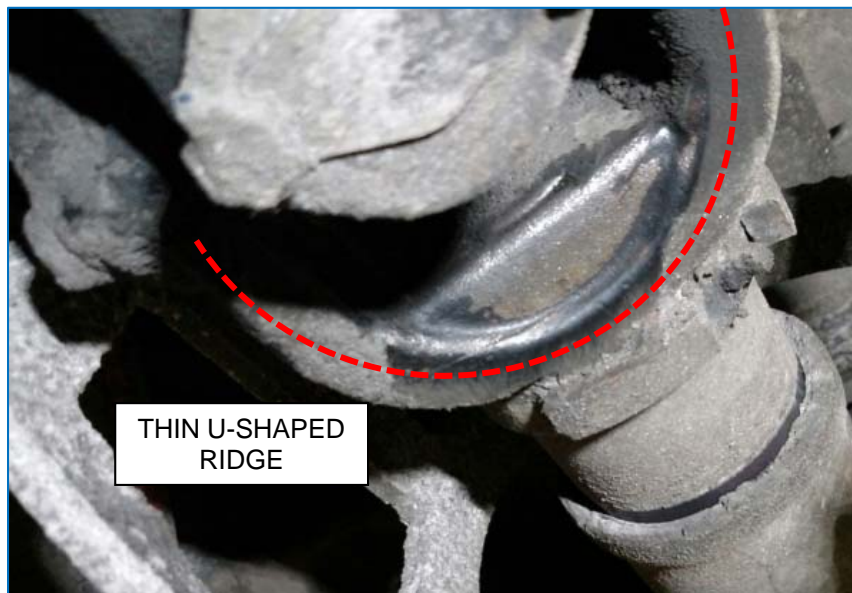


Figure 6: Style C Driveshaft



Style D – Plastic dust cap and thick wall = **APPROVED**



Figure 7: Style D Driveshaft

Style E – Plastic dust cap with horizontal cutout = **APPROVED**



Figure 8: Style E Driveshaft



Style F – Plastic dust cap with oval cutout = **APPROVED**

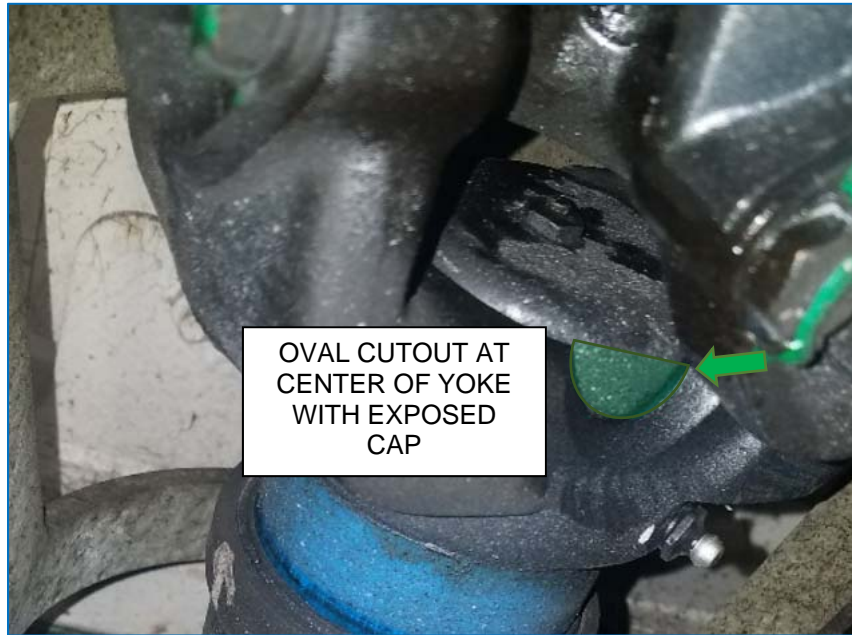


Figure 9: Style F Driveshaft

Step 5: In all cases and if legible, record the date code and work order (W/O) number located on a white label on the body of the driveshaft per Figure 10 and 11.



Figure 10: White Label

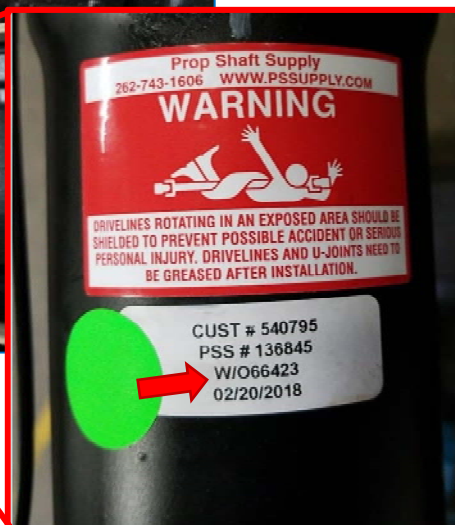


Figure 11: W/O and Date



Step 6: Where the driveshaft is **NOT APPROVED**, inspect the yoke for cracks at the center of the U-joint per Figure 12.



Figure 12: Potential Crack Area

NOTE! Where the driveshaft is **NOT APPROVED** bus has no visible crack, it can continue to be used in service until a replacement driveshaft is available. If it is visibly cracked, the bus must be held from service until a replacement driveshaft can be installed.

Step 7: Where the driveshaft is **APPROVED**, the bus may be returned to service.

Step 8: Return the completed inspection sheet and arrange for replacement part(s) through your NFI.Parts Customer Service Representative.



Driveshaft Inspection Sheet

Bus Number: _____
 SR: _____

Date: _____
 Technician: _____

Item	Inspection Item	Result
1.	Dust cap material. See figures 2 and 3.	Metal - APPROVED <input type="checkbox"/>
		Plastic - Go to item 2 <input type="checkbox"/>
2.	Driveshaft style. (See figures 4 through 9. Caps are not approved only if they are plastic.)	Style A - NOT APPROVED <input type="checkbox"/>
		Style B - NOT APPROVED <input type="checkbox"/>
		Style C - NOT APPROVED <input type="checkbox"/>
		Style D - APPROVED <input type="checkbox"/>
		Style E - APPROVED <input type="checkbox"/>
3.	Date code from label (If legible). See figure 10 and 11.	Date Code: _____
		WO#: _____
4.	Inspect the yokes for cracks, see figure 12. Are cracks visible?	Yes <input type="checkbox"/> No <input type="checkbox"/>

NOTE: Return completed sheet and arrange for replacement part(s) through your NFI.Parts Customer Service Representative.