

 **HYUNDAI**
Technical Service Bulletin

GROUP RECALL	NUMBER 18-01-011
DATE FEBRUARY, 2018	MODEL(S) Santa Fe Sport (AN) Santa Fe (NC)

SUBJECT: 2018 SANTA FE SPORT (AN) AND SANTA FE (NC) STEERING WHEEL INSPECTION AND REPLACEMENT (RECALL CAMPAIGN 173)

*** IMPORTANT**

***** Dealer Stock and Retail Vehicles *****

Dealers must perform this Recall Campaign on all affected vehicles prior to customer retail delivery and whenever an affected vehicle is in the shop for any maintenance or repair.

When a vehicle arrives at the service department, access Hyundai Motor America's "Warranty Vehicle Information" screen via WEBDCS to identify open Campaigns.

Description: Certain 2018MY Santa Fe Sport (AN) and Santa Fe (NC) vehicles may contain a steering wheel assembly that could potentially not meet specification. The subject vehicles could be equipped with a steering wheel hub assembly that could have been manufactured with insufficient breakage strength, increasing the risk that the steering wheel could separate from the steering column while driving. If the steering wheel separates from the steering column while driving, the driver may lose steering control of the vehicle, increasing the risk of a crash. This TSB provides the procedure to inspect and replace the steering wheel if needed.




Applicable Vehicles:

2018MY Santa Fe Sport (AN) vehicles produced by Kia Motors Manufacturing Georgia (VIN beginning with a "5XY") from August 10, 2017 through October 24, 2017.

2018MY Santa Fe Sport (AN) vehicles produced by Hyundai Motor Manufacturing Alabama (VIN beginning with a "5NM") from July 23, 2017 through October 25, 2017.

2018MY Santa Fe (NC) vehicles produced by Hyundai Motor Company (VIN beginning with "KM") from June 15, 2017 through December 28, 2017.

Part Information:

PART NAME	PART NUMBER	REMARKS		
STEERING WHEEL				
		Material	Body color	Stitch
	561202W050URY QH	PU	BLACK	-
	561202W050UNB QH		BROWN	-
	56120B8900URY QH	LEATHER (w/o heated)	BLACK	BLACK
	56120B8900UNB QH		BROWN	BROWN
	56120B8950URY QH	LEATHER (heated)	BLACK	BLACK
56120B8950UNB QH	BROWN		BROWN	

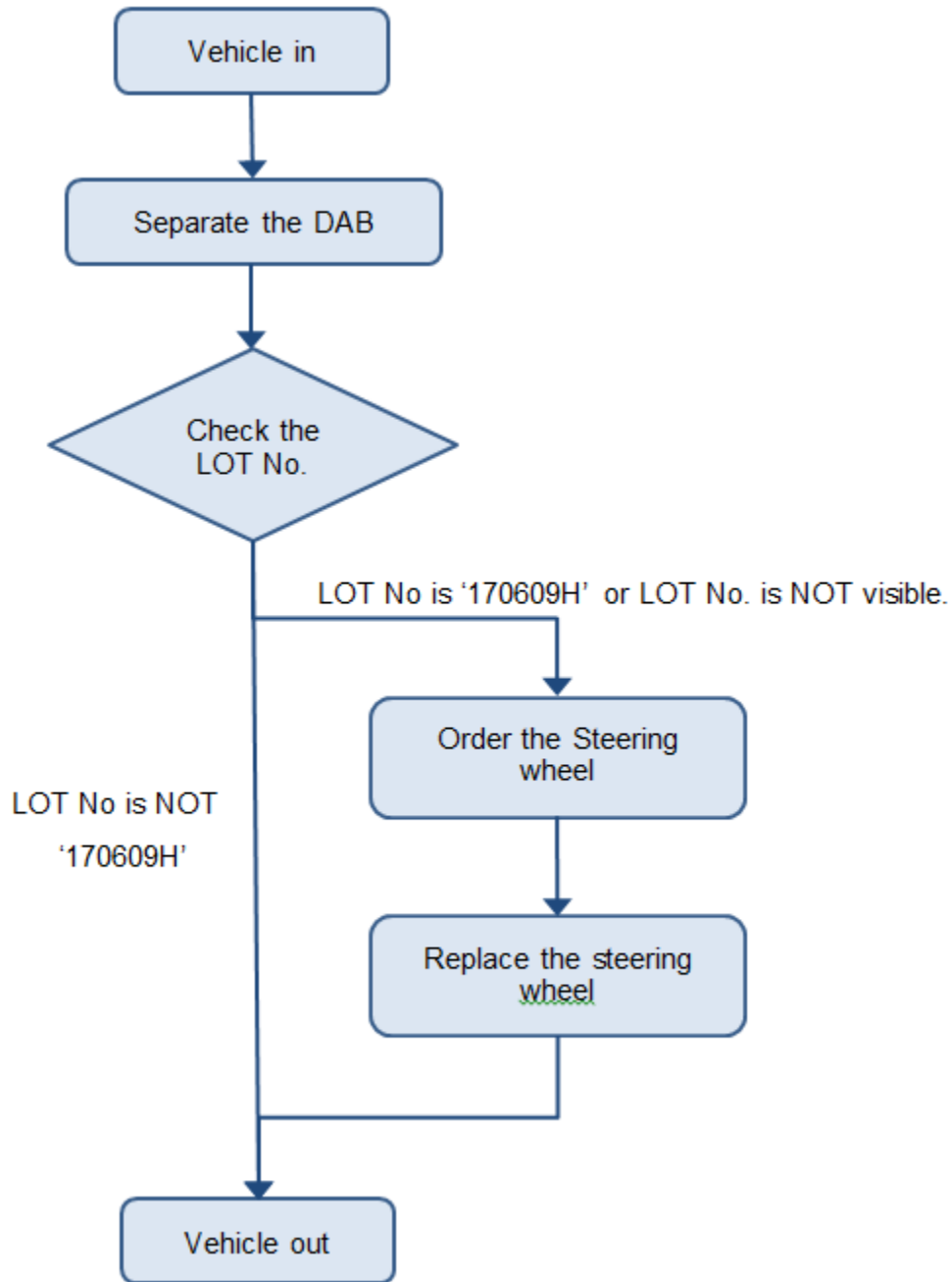
Warranty Information:

MODEL	OP CODE	OPERATION	OP TIME	Causal Part No.	NATURE	CAUSE
Santa Fe (NC) VIN beginning with a "KM")	81C012I0	STEERING WHEEL LOT NO. INSPECTION	0.3 M/H	56120 B8950 UNB QH	A32	ZZ4
	81C012R0	STEERING WHEEL LOT NO. INSPECTION AND REPLACEMENT	0.5 M/H			
Santa Fe Sport (AN) (VIN beginning with a "5NM")	81C012I1	STEERING WHEEL LOT NO. INSPECTION	0.3 M/H			
	81C012R1	STEERING WHEEL LOT NO. INSPECTION AND REPLACEMENT	0.5 M/H			
Santa Fe Sport (AN) (VIN beginning with a "5XY")	81C012I2	STEERING WHEEL LOT NO. INSPECTION	0.3 M/H			
	81C012R2	STEERING WHEEL LOT NO. INSPECTION AND REPLACEMENT	0.5 M/H			

NOTE 1: Submit Claim on Campaign Claim Entry Screen

NOTE 2: If a part is found in need of replacement while performing Recall 173 and the affected part is still under warranty, submit a separate claim using the same Repair Order. If the affected part is out of warranty, submit a Prior Approval Request for goodwill consideration prior to performing the work.

Service Procedure:



Steering Wheel Lot No. Inspection:

1. Open the hood and disconnect the Negative (-) terminal (J) from the battery.

NOTICE

NOTE: Wait at least 3 minutes before proceeding to make sure voltage is bled off.

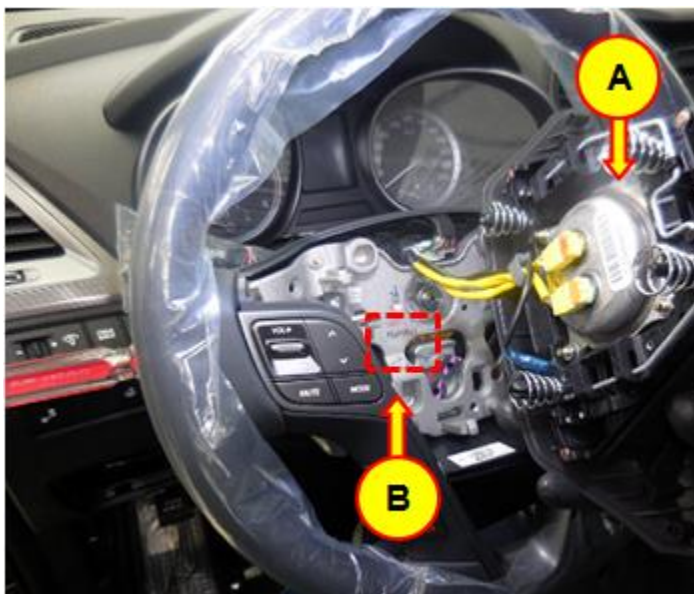
⚠ WARNING

Not removing the Negative (-) terminal from the battery may result in accidental airbag deployment and possible physical injury.



2. Remove the Driver Airbag Module per the 2018 Santa Fe Sport or Santa Fe Service Manual (Restraint >Airbag Module>Driver Airbag (DAB) Module and Clock Spring).

3. Raise the driver airbag module (A) and inspect the LOT No. (B).



4. If the LOT No. (C) is '170609H' or does not have a Lot No., replace the steering wheel per the 2018 Santa Fe Sport or Santa Fe Service Manual (Steering System>Steering Wheel).



5. If the LOT No. (C) is not '170609H', reinstall all removed parts in reverse order of removal and finish the service procedure.



6. Reinstall the remaining components in reverse order of removal per the 2018 Santa Fe Sport or Santa Fe Service Manual (Steering System>Steering Wheel) and (Restraint >Airbag Module>Driver Airbag (DAB) Module and Clock Spring).
7. Reconnect the negative battery cable after all the components have been re-installed to the vehicle.
8. Confirm there is no illuminated airbag light on.