



RECALL CAMPAIGN

NHTSA# 18V-075

Date of Publication: February 2018

TC# 2018-072

Job Code 9901366

Series/Flat Rate .7 Hr

REQUIRES PARTS KIT

ACTION REQUIRED

Add 2 panels to stove cabinet to prevent air from the furnace affecting stove burners.

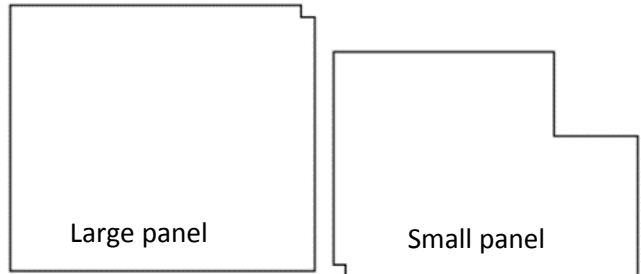
AFFECTED UNITS

2018 Eagle 333BHOK "EC" J1EC0075-0104

PARTS KIT 18V-075

Note: Parts Kit can only be ordered using the Order Form included with this bulletin.

- 2 - wood panels
- 4 - Screws #8 x .75" round washer quad
- 1 - 14 " Wire tie



Misc. Tools and Supplies

- Screw gun with #2 square drive bit
- Small jigsaw or utility knife

REPAIR INSTRUCTIONS

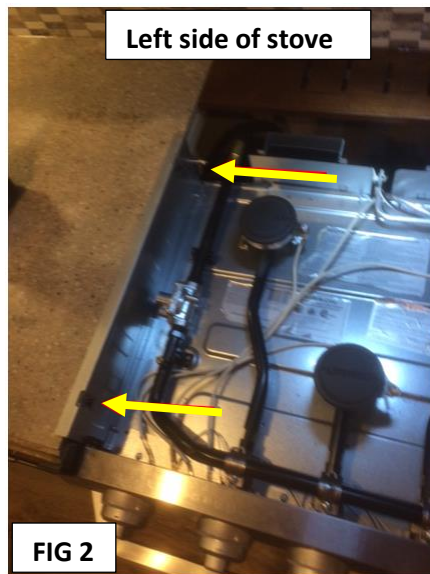
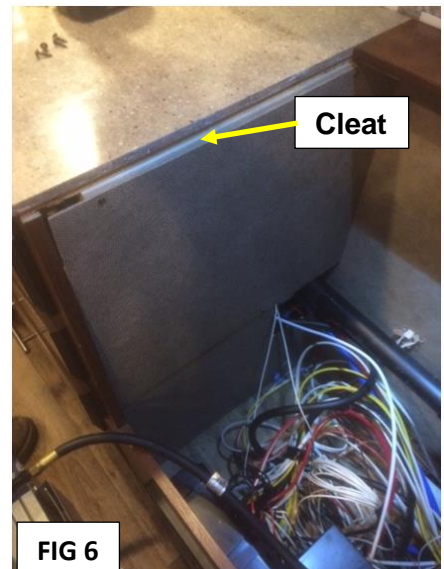
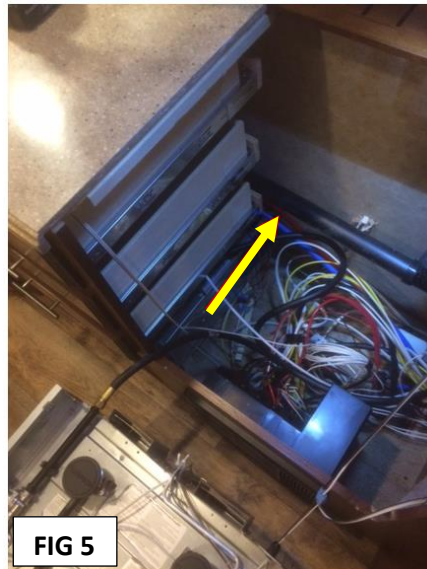
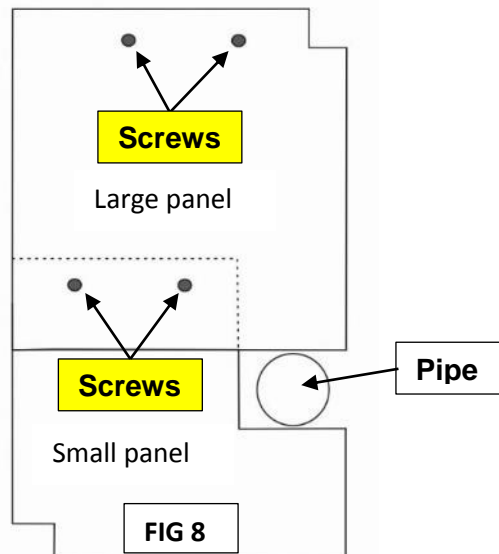
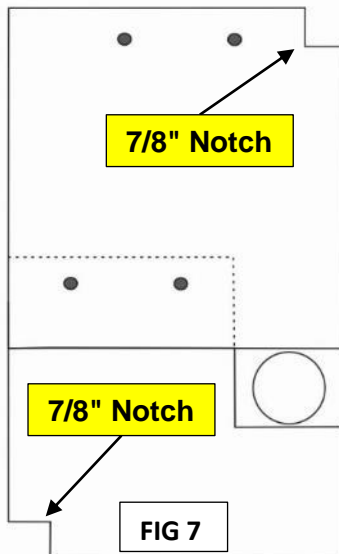


Fig 1: Carefully remove the stovetop by pulling up at arrows and set aside.

Fig 2 & 3: Remove two screws on each side of the stove.



- Fig 4:** Carefully remove the stove and set it on the floor. The gas line can remain fastened to the stove.
- Fig 5:** Tie the water lines to the black pipe so the panels will fit tighter in the next step. Use wire ties to attach the water lines to the pipe.
- Fig 6:** Install the two wood panels in the stove opening on the left side. Larger panel mounts on top. Attach the large panel using two 3/4" screws. The screws attach to the 3/4 inch cleat on the stove opening left side.



- Fig 7:** The 7/8" notches may aid in fitting the panels tighter in the opening. Use the utility knife or jigsaw to cut the two notches (one in each panel). Gapping at the notches should be kept as small as possible to restrict air flow.
- Fig 8:** Panels should be installed as shown; large panel on top, small panel overlapping the large one. Small panel can be in front or behind the large panel. Both panels should be as close as possible to the pipe to reduce air flow. Fasten both panels together (where they overlap) using two 3/4" screws (from the kit).

Replace the stove in the opening.
 Secure the stove with the 4 screws removed previously.
 Replace the stove top inserting the front first then pressing the rear in place.
 Turn on the furnace and test the stove burners for proper flame operation.