



RECALL CAMPAIGN

NHTSA# 18V072

Date of Publication: February 2018

TC# 2018-070

Job Code 9901372

Series/Flat Rate .5 Hr

REQUIRES PARTS KIT

ACTION REQUIRED

Remove underrated 11,700 lbs safety chains and replace with 16,200lbs safety chains.

AFFECTED UNITS

2017-2018 Eagle 333BHOK (EC)
H1EC0050-0098
J1EC0051-104

PARTS KIT 18V-072

Note: Kit can only be ordered using the order form included with this bulletin.

2 - Safety chains 16,200lbs 27 inch length
1 - Chain Elbow

Misc. Tools and Supplies

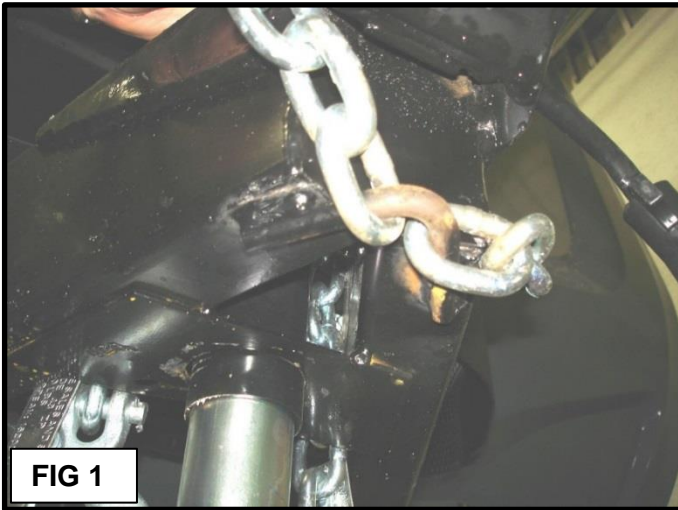
4-1/2" Grinder with cutoff wheels
Welder
Welding gloves and helmet
Safety glasses

Chain Elbow



16,200lb tag

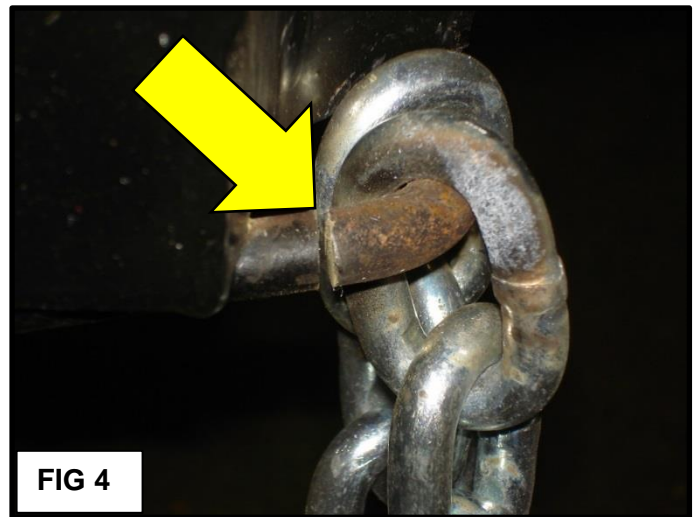
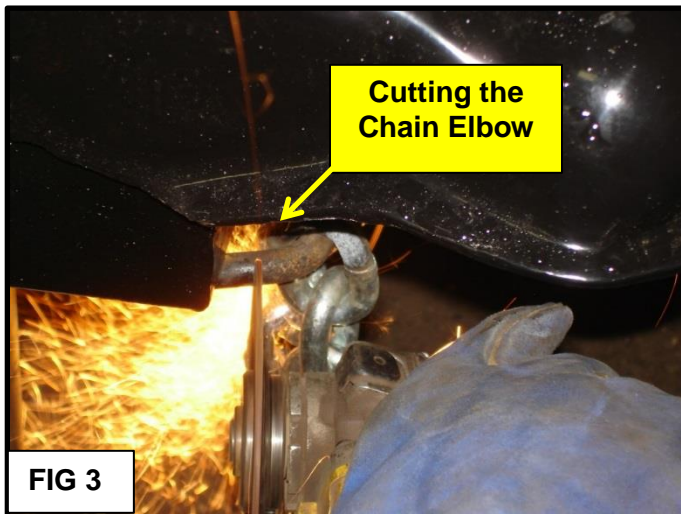
Repair must be completed by a qualified welder, typically an individual that has been trained and certified to perform this type of welding by a recognized authority, such as American Welding Society.



Step 1:

FIG 1: Locate the safety chains and the chain elbow under the hitch coupler.

FIG 2: Hang the chains straight down from the elbow.



Step2:

WARNING: Wear safety glasses and gloves to prevent injury from flying debris.

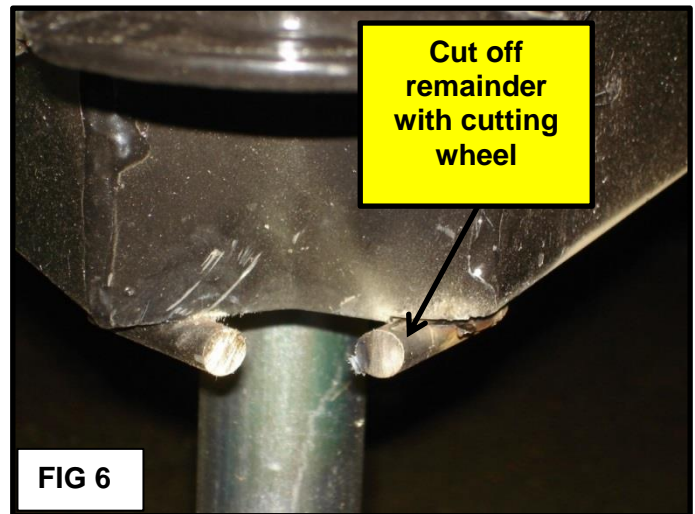
FIG 3: Use the grinder with cutoff wheel and cut the chain elbow on one side.

KEEP CHAINS AWAY FROM AREA YOU ARE CUTTING.

FIG 4: Chain elbow cut.

Cut the other side of the chain elbow in the same manner.

KEEP CHAINS AWAY FROM AREA YOU ARE CUTTING.



Step 3:

FIG 5: Shows the chain elbow cut in two.

FIG 6: Use the cutoff wheel to cut off the remaining pieces of the chain elbow.



Step 4:

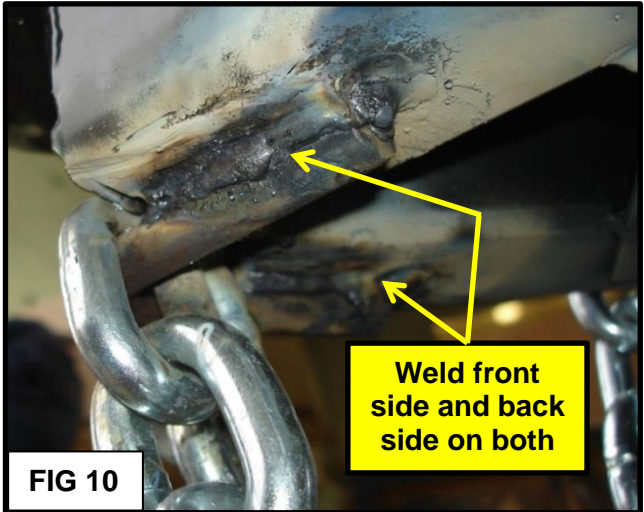
FIG 7: Hook the new chains on top of the A-Frame

Insert the new chain elbow through the two new chains.

FIG 8: Hold the chain elbow up under the hitch where the old one was located.

Make sure the elbow is positioned out far enough to ensure the chains can move freely on it.

Move the chains over to one side away from welding area.



Step 5:

FIG 9: Weld both ends of each chain elbow to the A-Frame.

Weld the outside and the inside on each end of the chain elbow to A-Frame.

FIG 10: Front and back sides of each end of the chain elbow should be welded to the A-Frame.



Step 6:

FIG 11: Once the welds are cool, paint black with a good quality spray paint like Rustoleum.

Chains should move freely on the chain elbow.