

2006 B-SERIES - DRIVER AND PASSENGER AIR BAG SAFETY RECALLS 2218A AND 2318A

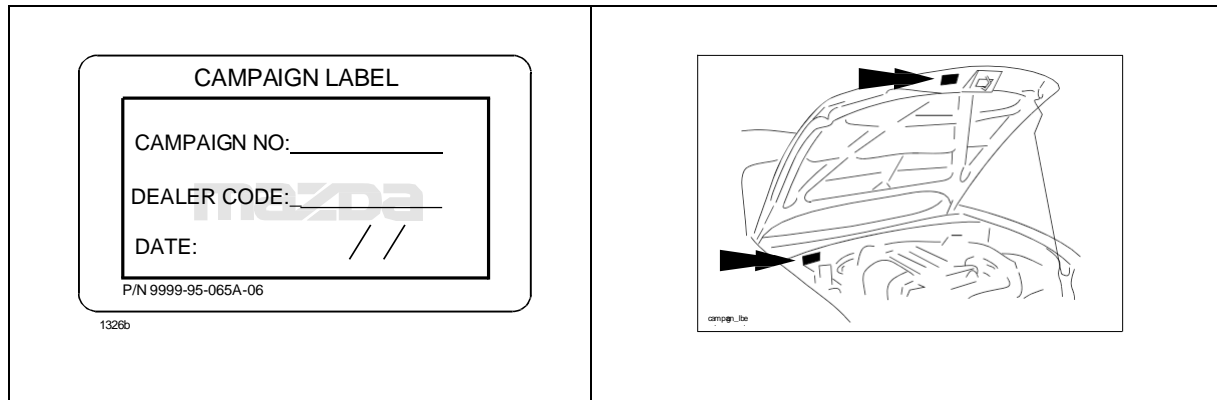
A. VEHICLE INSPECTION PROCEDURE

1. Verify that the vehicle is within the following ranges:

Model	VIN Range
2006 B-Series	All – Currently 143 vehicles are affected

- If the vehicle is within the above ranges, proceed to Step 2.
 - If the vehicle is not within the above ranges, return vehicle to the customer or inventory.
2. Perform a Warranty Vehicle Inquiry using your eMDCS System and inspect vehicle for Campaign Labels **Recalls 2218A and 2318A** attached to the vehicle's hood or bulkhead. Refer to eMDCS System - Warranty Vehicle Inquiry Results table below.

NOTE: Be sure to verify Recall number as the vehicle may have multiple Recall labels.



eMDCS System - Warranty Vehicle Inquiry Results:

If eMDCS displays:	Campaign Label is:	Action to perform:
RECALLS 2218A and 2318A OPEN	Present	Contact the Warranty Hotline at (877) 727-6626 option 3 to update vehicle history.
	Not present	Proceed to "B. REPAIR PROCEDURE".
RECALLS 2218A and 2318A CLOSED	Present	Return vehicle to inventory or customer.
	Not present	Proceed to "C. CAMPAIGN LABEL INSTALLATION".
RECALLS 2218A and 2318A are not displayed	Does not apply	Recall does not apply to this vehicle. Return vehicle to inventory or customer.

IMPORTANT: Be sure to follow the packing and shipping instructions provided in the carton and in Air Bag Inflator Return Instructions.

CAUTION:

- Use the same carton which was used to deliver a new inflator. It is a specialized box that is internationally accepted for shipping an inflator.

- Pack the old inflator in the box exactly in the same manner as the new inflator was packed.

B. REPAIR PROCEDURE

Overview:

Remove the driver and passenger airbags from the vehicle and replace only the inflator portion. The removed inflators will be placed into the packaging from the new inflator and shipped to Takata using the included return shipping label.

DRIVER AIRBAG INFLATOR REPLACEMENT Air

Bag Module Removal:

WARNING:

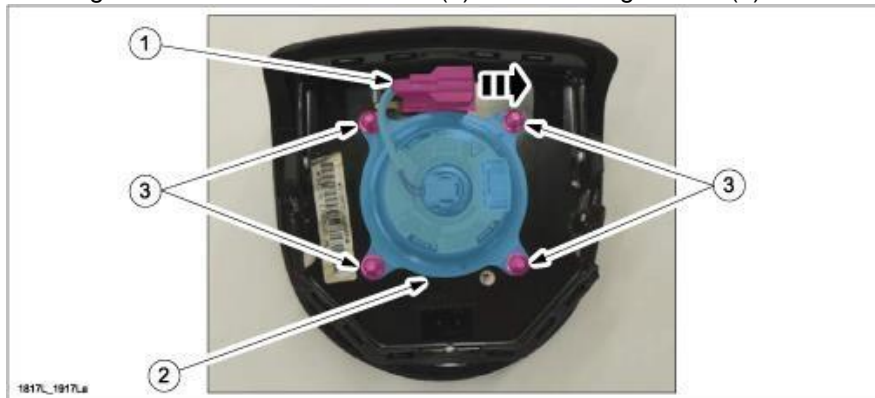
- Perform the replacement in a clean environment. Oil, grease, water, etc. on components may cause the air bag modules to fail to deploy in an accident, which may cause serious injury. Do not allow oil, grease, water, etc., on components.
- Inserting a screwdriver, etc., into the connector of an air bag module may damage the connector and cause the air bag module to deploy improperly, which may cause serious injury. Do not insert any foreign objects into the connector.
- Do not make an attempt to directly supply electrical power to the module and the inflator.
- Keep the module facing of the pad surface upwards at all times, except during replacement.
- Do not use the module and new inflator if they were dropped on the ground.
- Avoid module and inflator exposure to temperatures of 194 degrees F (90 degrees C) or more.

1. Turn the ignition switch to the LOCK position.
2. Record the customer's preset radio stations.
3. Disconnect the negative battery cable and wait for one (1) minute or more.
4. Remove the driver air bag module. Refer to MGSS online (DRIVER AIR BAG MODULE REMOVAL / INSTALLATION).
5. Lay a protective cloth on the work bench, then place the air bag module on it to avoid any damage or scratches to the surface.

WARNING: Do not allow any debris on or around air bag once the inflator is removed.

Inflator Replacement:

1. Release the retaining tab and slide the connector (1) of the air bag inflator (2) off the retainer.

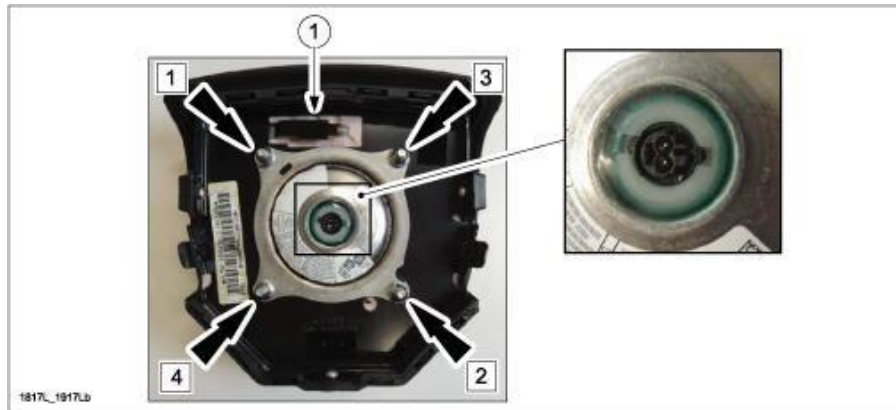


2. Remove and discard the four air bag inflator retaining nuts (3).
3. Remove the air bag inflator and set aside for return shipping.

NOTE: In order to verify the correct airbag inflator is installed, mark the old airbag inflator with a felt tip marker prior to removal.

4. Install the new inflator into the driver air bag. The retainer (1) will be used for the electrical connector.

NOTE: The new air bag inflator must be installed in the same orientation as the original part to ensure the inflator module and air bag harness electrical connector T-shape indexes are aligned properly.



5. Install four new air bag inflator nuts onto the driver airbag.
Tightening torque: 6.5 Nm (57 lb-in) in the specified sequence [1] [2] [3] [4]
6. Align the T-shape index on both the wiring harness electrical connector and the airbag inflator by gently pulling on the wiring harness to ensure it is properly seated.
7. Slide the connector (1) of air bag inflator (2) onto the retainer.



Air Bag Module Reinstallation:

1. Install the driver air bag module. Refer to MGSS online (DRIVER AIR BAG MODULE REMOVAL / INSTALLATION).
2. Reconnect the negative battery cable.
3. Turn the ignition switch to the ON position.
4. Verify that the air bag system warning light illuminates for approx. 6 sec., then goes out.

NOTE: If the air bag system warning light does not operate in the manner described above, there is a mal- function in the system. Inspect the system following the on-board diagnostic system procedure according to MGSS online.

5. Proceed to "PASSENGER SIDE AIRBAG REPLACEMENT".

PASSENGER AIRBAG INFLATOR REPLACEMENT

Air Bag Module Removal:

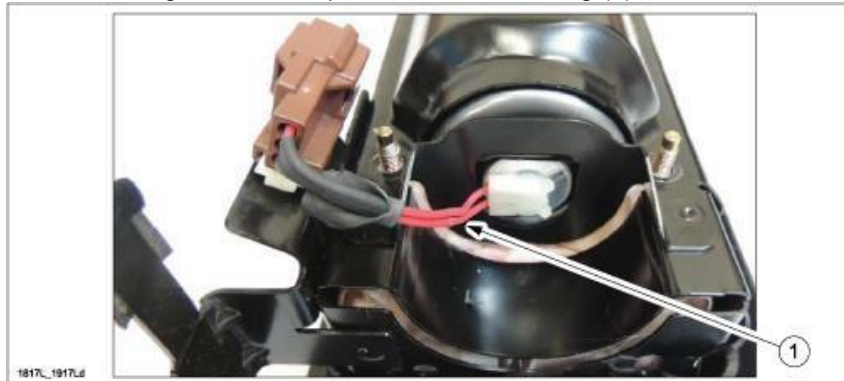
WARNING:

- Perform the replacement in a clean environment. Oil, grease, water, etc. on components may cause the air bag modules to fail to deploy in an accident, which may cause serious injury. Do not allow oil, grease, water, etc., on components.
 - Inserting a screwdriver, etc., into the connector of an air bag module may damage the connector and cause the air bag module to deploy improperly, which may cause serious injury. Do not insert any foreign objects into the connector.
 - Do not disassemble the vehicle, other than instructed here.
 - Do not make an attempt to directly supply electrical power to the module and the inflator.
 - Keep the module facing of the pad surface upwards at all times, except during replacement.
 - Do not use the module and new inflator if they were dropped on the ground.
 - Avoid module and inflator exposure to temperatures of 194 degrees F (90 degrees C) or more.
1. Turn the ignition switch to the LOCK position.
 2. Disconnect the negative battery cable and wait for one (1) minute or more.
 3. Remove the passenger air bag module. Refer to MGSS online (PASSENGER AIR BAG MODULE REMOVAL / INSTALLATION).
 4. Lay a protective cloth on the work bench, then place the air bag module on it to avoid any damage or scratches to the surface.

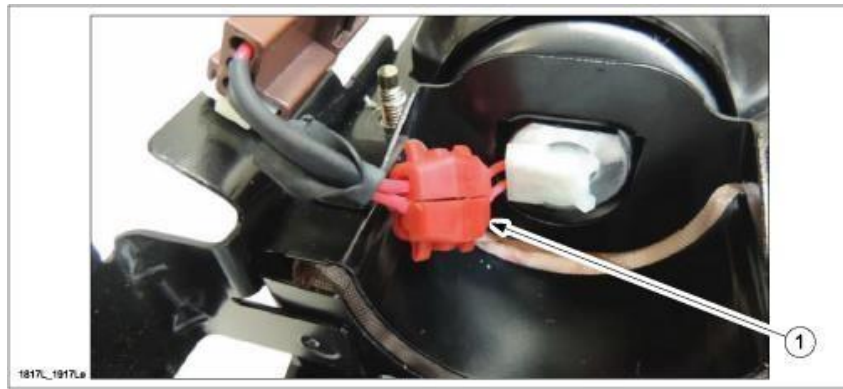
WARNING: Do not allow any debris on or around air bag once the inflator is removed.

Inflator Replacement:

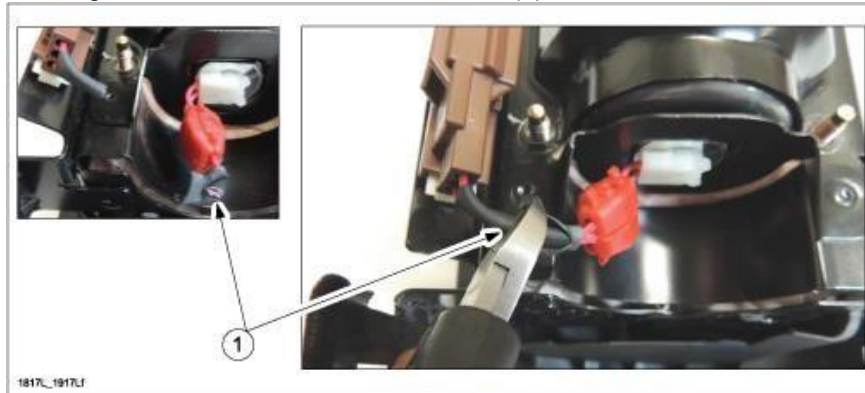
1. Cut and peel back the wiring sleeve to expose the inflator wiring (1).



2. Install a wiring shunt (1) between the inflator wiring connector and the inflator body. This will cause the inflator to become inert.



3. Cut the inflator wiring between connector and the shunt (1).



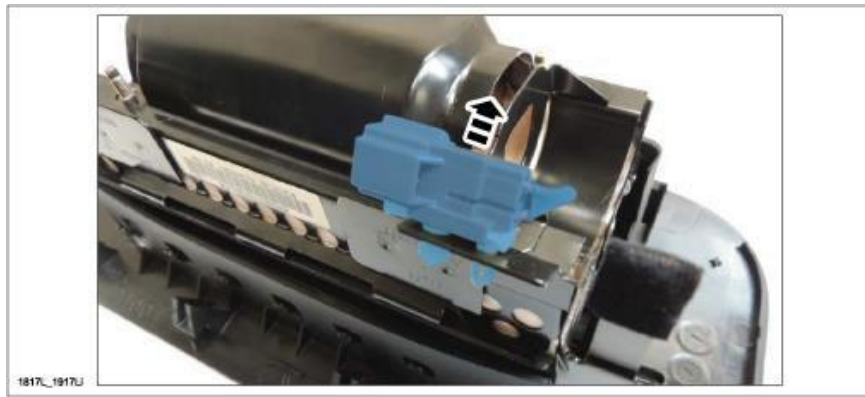
4. Remove and discard the four airbag inflator retaining nuts (1) and the bracket (2).



5. With an assistant holding the airbag assembly, remove the inflator from the airbag assembly by pushing outward on the inflator (1).



6. Remove the airbag inflator harness electrical connector.

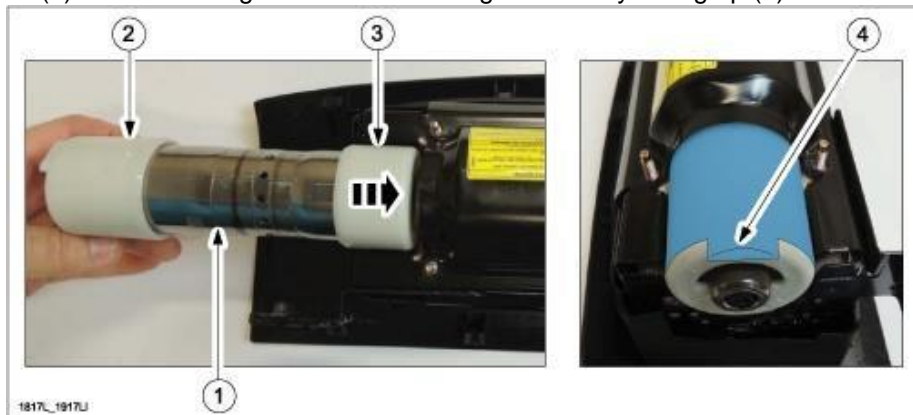


7. Align and install both new inflator end caps.

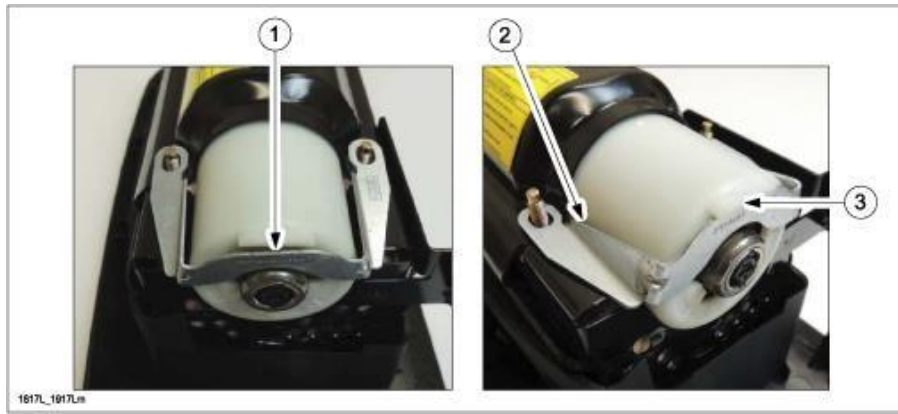
NOTE: Both new inflator connector end caps must be installed with the tab features aligned and fully seated. Both end caps are specific to either end of the Inflator.

Inflator Connector End Alignment Feature	Connector End Cap Alignment Feature

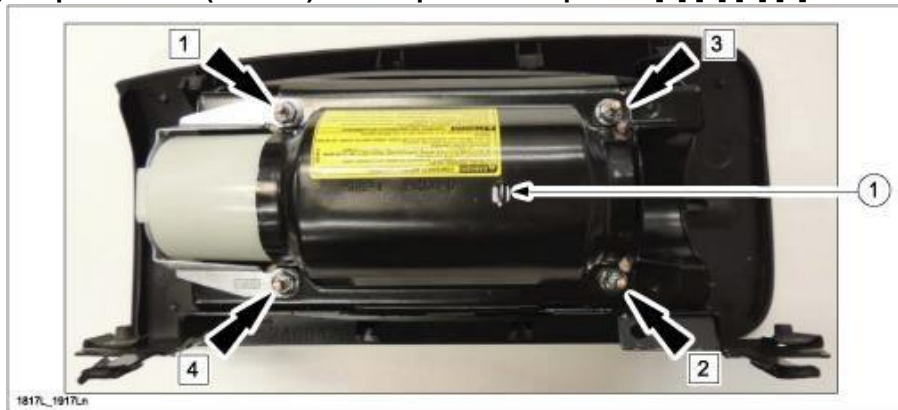
8. Install the inflator (1) into air bag assembly with the connector end cap facing out (2) and tail end cap facing inward (3) so that the alignment feature is aligned directly facing up (4).



9. Align and install (1) the new inflator retaining bracket (2) so it is aligned under the tab (3).



10. Install the four new nuts, making sure the pop-up indicator (1) on the air bag assembly is present.
Tightening torque: 6.5 Nm (57 lb-in) in the specified sequence [1] [2] [3] [4]



11. Align the T-shape index on both the wiring harness electrical connector and the airbag inflator, then connect the new airbag wiring harness to the inflator module.
12. Make sure the connection between the wiring harness electrical connector and the airbag inflator (1) is properly seated by gently pulling on the wiring harness.



13. Install the inflator harness connector (1) to the air bag assembly bracket.



Air Bag Module Reinstallation:

1. Install the passenger air bag module. Refer to MGSS online (PASSENGER AIR BAG MODULE REMOVAL / INSTALLATION).
2. Reconnect the negative battery cable.
3. Turn the ignition switch to the ON position.
4. Verify that the air bag system warning light illuminates for approx. 6 sec., then goes out.

NOTE: If the air bag system warning light does not operate in the manner described above, there is a malfunction in the system. Inspect the system following the on-board diagnostic system procedure according to MGSS online.

5. Re-enter the customer's preset radio stations.
6. Proceed to "C. CAMPAIGN LABEL INSTALLATION".

C. CAMPAIGN LABEL INSTALLATION

1. Fill out a blue "Campaign Label" (9999-95-065A-06) with Campaign No: "2218A" and "2318A", your dealer code, today's date.

CAMPAIGN LABEL

CAMPAIGN NO: _____

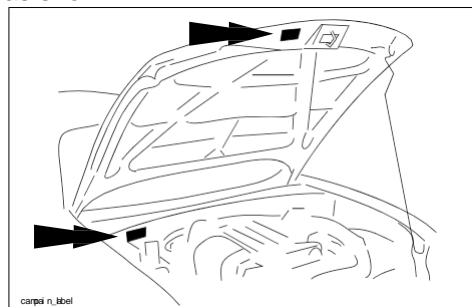
DEALER CODE: _____

DATE: / /

P/N 9999-95-065A-06

1326b

2. Affix it to the hood or bulkhead as shown:



campaign_label

3. Return the vehicle to customer.