


CERTAIN 2015 THROUGH 2018 MODEL YEAR F-150 REGULAR CAB AND SUPERCREW CAB VEHICLES — CARPET SHIELDING AND INSULATION REWORK

OVERVIEW

In some of the affected vehicles, deployment of the front seatbelt pretensioners during a crash event may cause a fire inside the driver or passenger side B-pillar trim in the vehicle passenger compartment. A fire in the B-pillar area may spread within the vehicle and increase the risk of injury. Odor and/or smoke may be evident prior to fire propagation. Before demonstrating or delivering any new in-stock vehicles involved in this recall, dealers are to modify the B-pillar sound insulation, remove electrical harness tape remnants, and apply shielding to the carpet insulation and loadspace trim panel (Regular Cab only) as directed.

NOTE: To view a video demonstration of the repair procedures, click the video icon: 

SERVICE PROCEDURE - SUPERCREW CAB VEHICLES ONLY

Recommended Tool List:

Plastic Trim Tool
Right Angle Die Grinder
Scissors
Compressed Air Blow Gun



NOTE: This procedure should be performed on the left hand and right hand sides of the vehicle.

1. Remove the lower B-pillar trim panel. Please follow the Workshop Manual (WSM) procedures in Section 501-05.
 - It is not necessary to position aside the door weatherstripping for this procedure.
2. From the A-pillar backward to the C-pillar check vehicle metal floor, carpet and wire harness for tape remnants or other debris. Remove if present. See Figure 1.
 - Use a compressed air blow gun to remove smaller, hard to access debris.

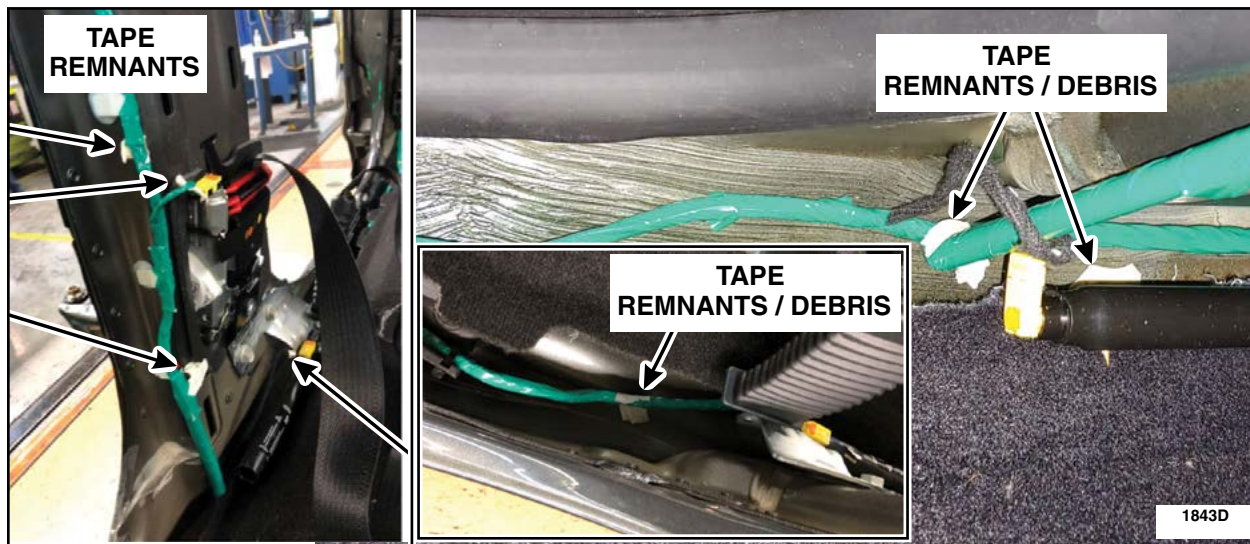


FIGURE 1



3. Cut two 28 in (711.2 mm) lengths of 2-1/2 in (63.5 mm) wide Nashua 324A or 3M 3340 foil tape.
4. Position the carpet upward to apply foil tape in the following steps.

NOTE: Position the foil tape in vehicle before removing the paper backing.

5. Apply the first length of foil tape. See Figures 2 and 3.
 - a. Position the first length of tape under the carpet and align with the edge of the carpet and the rear edge of the front B-pillar to scuff plate notch. See Figure 2.
 - b. Start from the front, peeling the paper backing off of the tape while pressing the tape into the insulation and carpet. See Figure 3.
 - c. Continue applying the tape, ending at the front edge of the rear B-pillar to scuff plate notch.**IMPORTANT! Ensure the edge of the tape stays aligned with the edge of the carpet while applying the foil tape. See Figure 2.**

NOTE: Carpet shown out of vehicle for clarity. Passenger side shown, driver side similar.

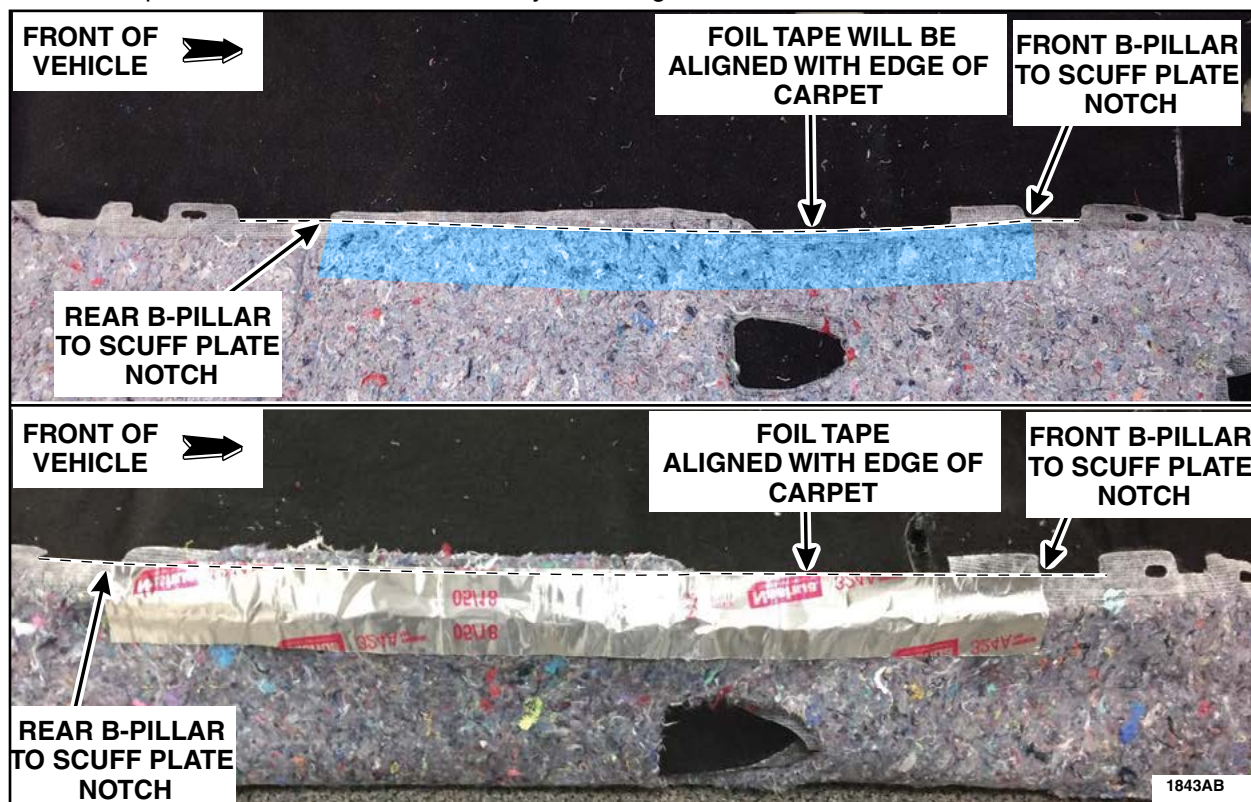


FIGURE 2





FIGURE 3

6. Apply the second length of foil tape overlapping the first. Start from the front, peeling the paper backing off the tape while applying, overlapping the first length of tape by $\frac{3}{8}$ in (9.52 mm). See Figure 4.

NOTE: Carpet shown out of vehicle for clarity. Passenger side shown, driver side similar.

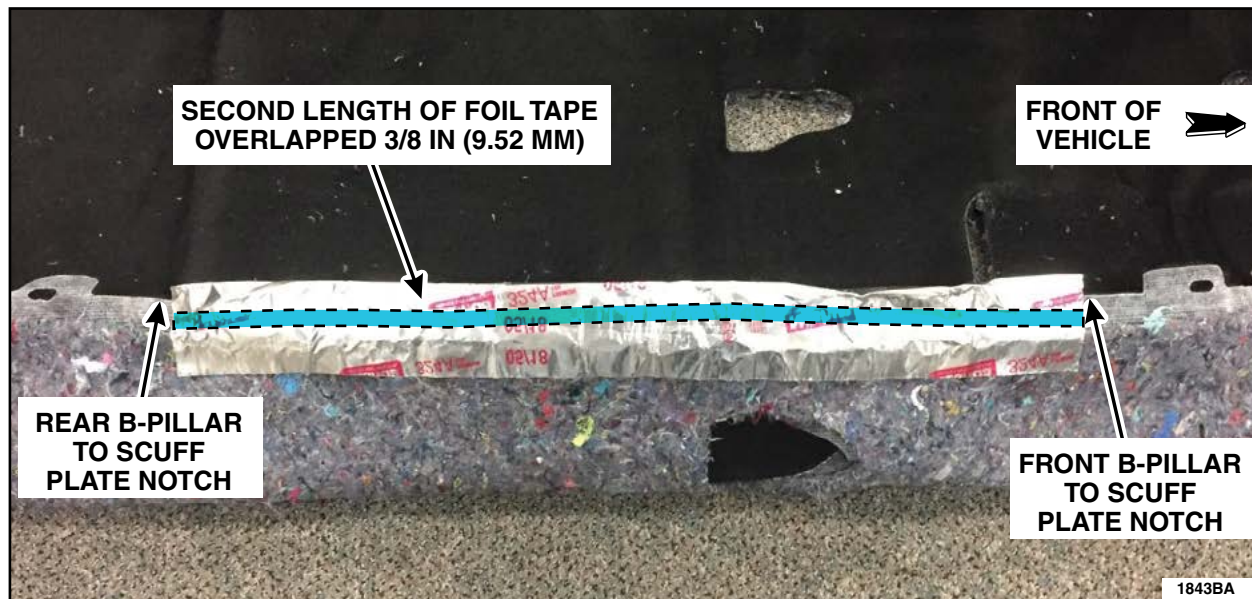


FIGURE 4



7. Wrap the foil tape around the top of the carpet. See Figures 5 and 6.

NOTE: Carpet shown out of vehicle for clarity. Passenger side shown, driver side similar.



FIGURE 5

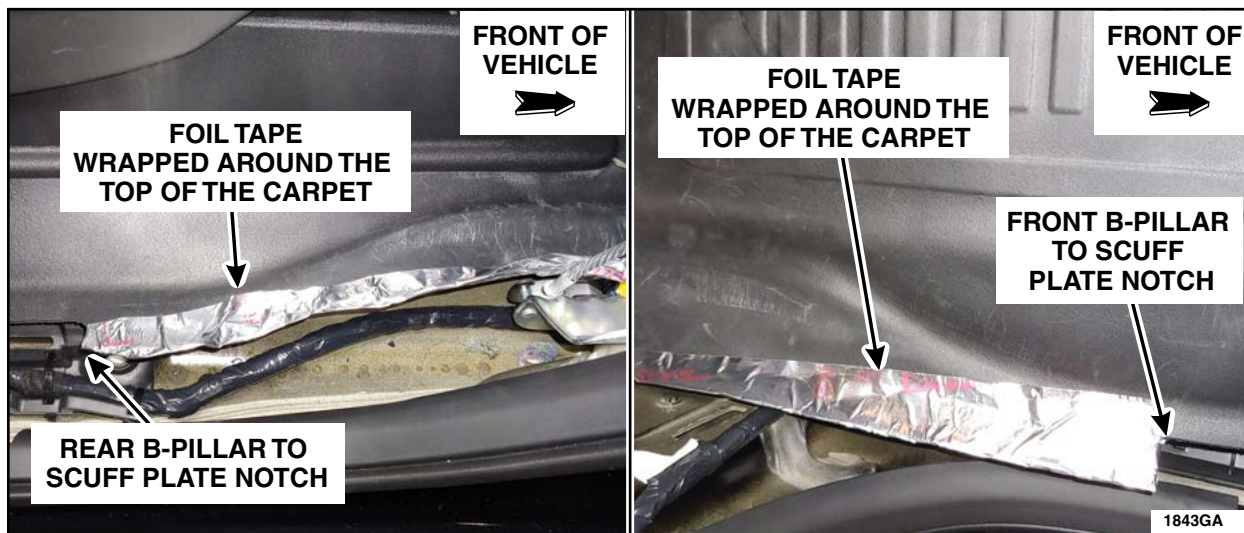


FIGURE 6



8. Using hand pressure, pinch / crimp both sides of the applied foil tape to ensure positive adhesion with no exposed insulation. See Figure 7.

- Apply additional foil tape as needed to correct any gaps or improper overlap.



FIGURE 7

IMPORTANT! Use caution not to tear or rip the foil tape while positioning the carpet into place. Apply additional foil tape as needed to correct any gaps or improper overlap.

9. Position the carpet back into its original position and hook the loops into the carpet retention clips. See Figure 8.



FIGURE 8



10. Using scissors, remove the insulation from the B-pillar trim panels, from the area shown.
See Figure 9.

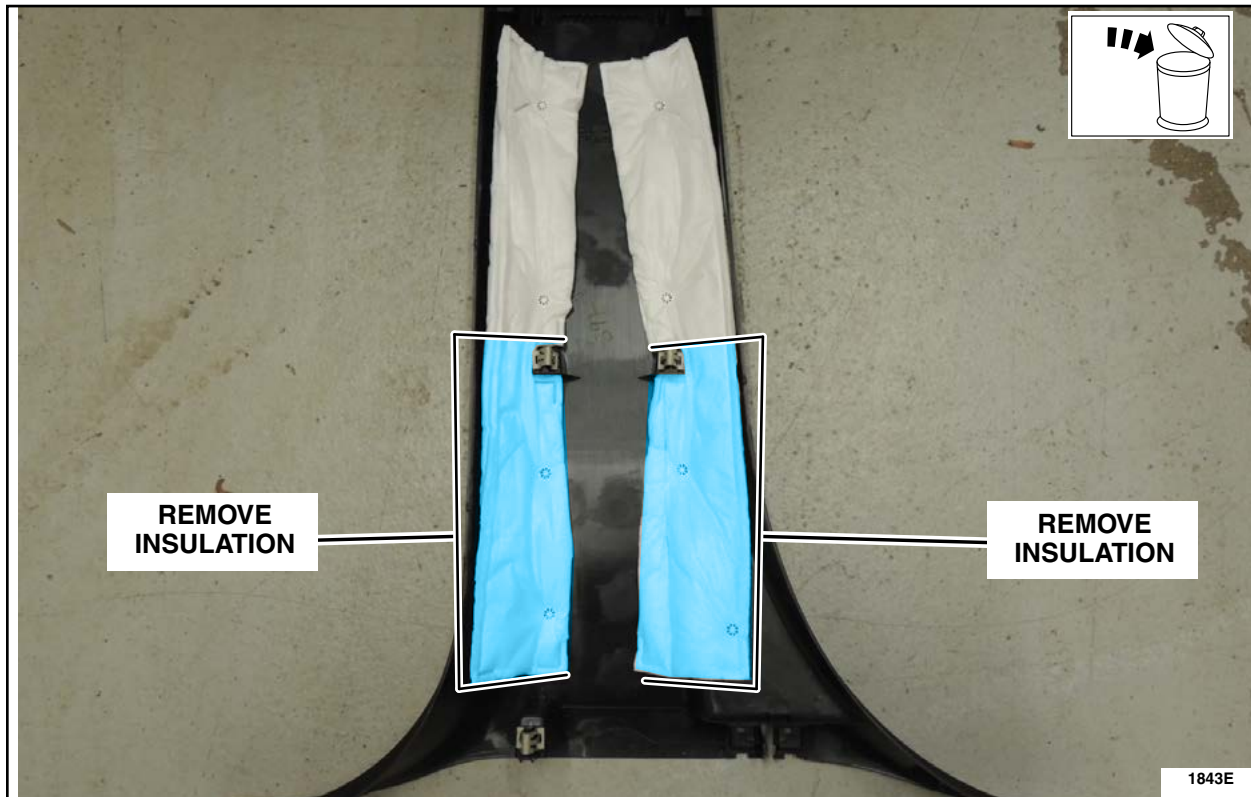


FIGURE 9

11. Lightly use a die grinder with abrasive pad to remove any remaining cloth material from the all of the plastic welds. See Figure 10.

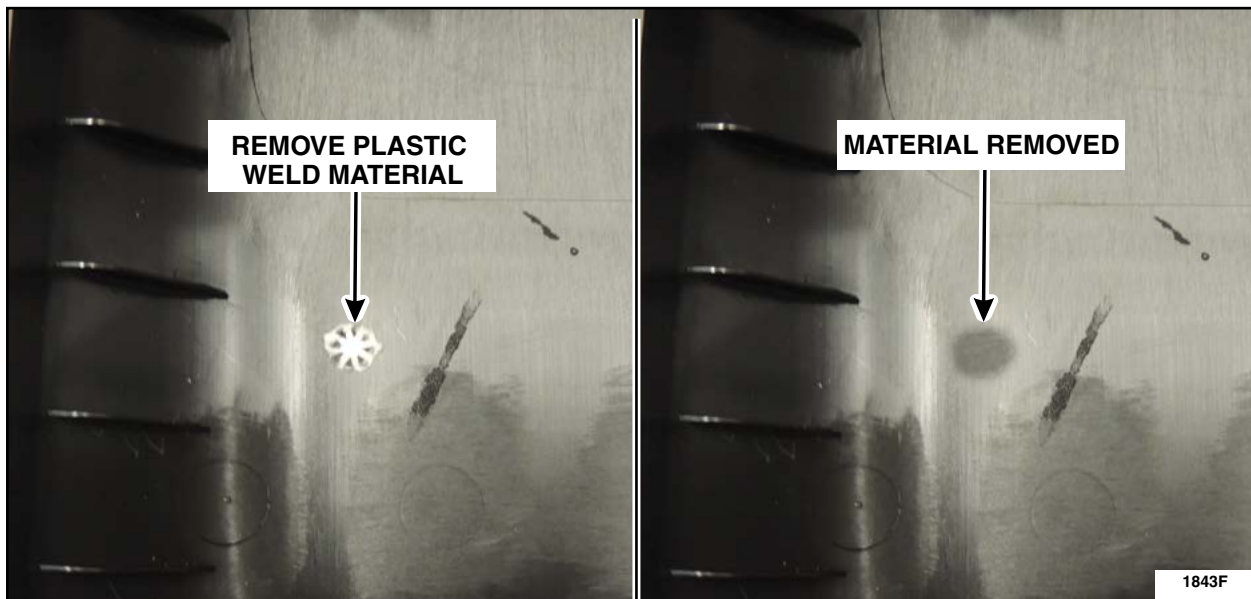


FIGURE 10



NOTICE: Do not use a knife to cut excess tape that is exposed. Damage can occur to the vehicle trim or carpet. Only use your hands or a plastic trim tool to adjust the foil tape.

12. Reassemble the vehicle by reversing the removal procedures.

- For appearance purposes, when reinstalling the vehicle trim panels inspect to ensure foil tape is not exposed with trim panels installed. See Figure 11.



FIGURE 11

13. Use a plastic trim tool to correct any areas where the door weather stripping may be pinched behind the installed B-pillars. See Figure 12.

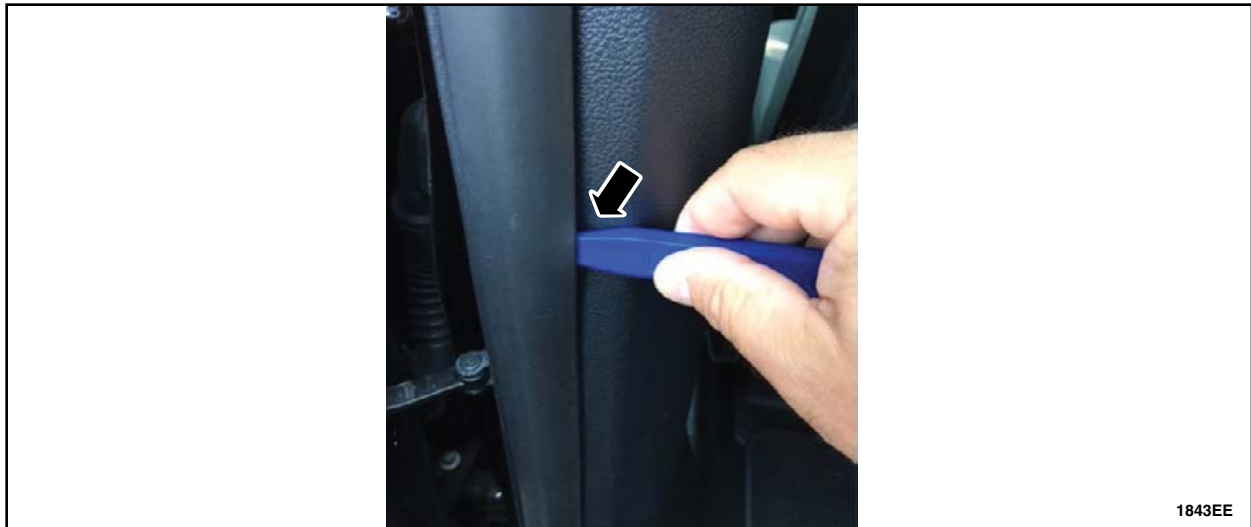


FIGURE 12

