



CERTAIN 2015 THROUGH 2018 MODEL YEAR F-150 REGULAR CAB AND SUPERCREW CAB VEHICLES — CARPET SHIELDING AND INSULATION REWORK

OVERVIEW

In some of the affected vehicles, deployment of the front seatbelt pretensioners during a crash event may cause a fire inside the driver or passenger side B-pillar trim in the vehicle passenger compartment. A fire in the B-pillar area may spread within the vehicle and increase the risk of injury. Odor and/or smoke may be evident prior to fire propagation. Before demonstrating or delivering any new in-stock vehicles involved in this recall, dealers are to modify the B-pillar sound insulation, remove electrical harness tape remnants, and apply shielding to the carpet insulation and loadspace trim panel (Regular Cab only) as directed. This service must be performed on all affected vehicles at no charge to the vehicle owner.

NOTE: To view a video demonstration of the repair procedures, click the video icon.

- Regular Cab equipped with loadspace trim panel **without** a cut out notch: 
- Video showing the foil tape installation on loadspace trim panel **with** a cut out notch: 

SERVICE PROCEDURE - REGULAR CAB VEHICLES ONLY

Recommended Tool List:

Plastic Trim Tool
Right Angle Die Grinder
Scissors
Compressed Air Blow Gun



Floor Carpet Foil Tape Installation

NOTE: This procedure should be performed on the left hand and right hand sides of the vehicle.

1. Remove the lower B-pillar trim panel. Please follow the Workshop Manual (WSM) procedures in Section 501-05.
 - It is not necessary to position aside the door weatherstripping for this procedure.
2. From the A-pillar backward to the rear of the vehicle cab along the metal floor, carpet and wire harness check for tape remnants or other debris. Remove any present. See Figure 1.
 - Use a compressed air blow gun to remove smaller, hard to access debris.

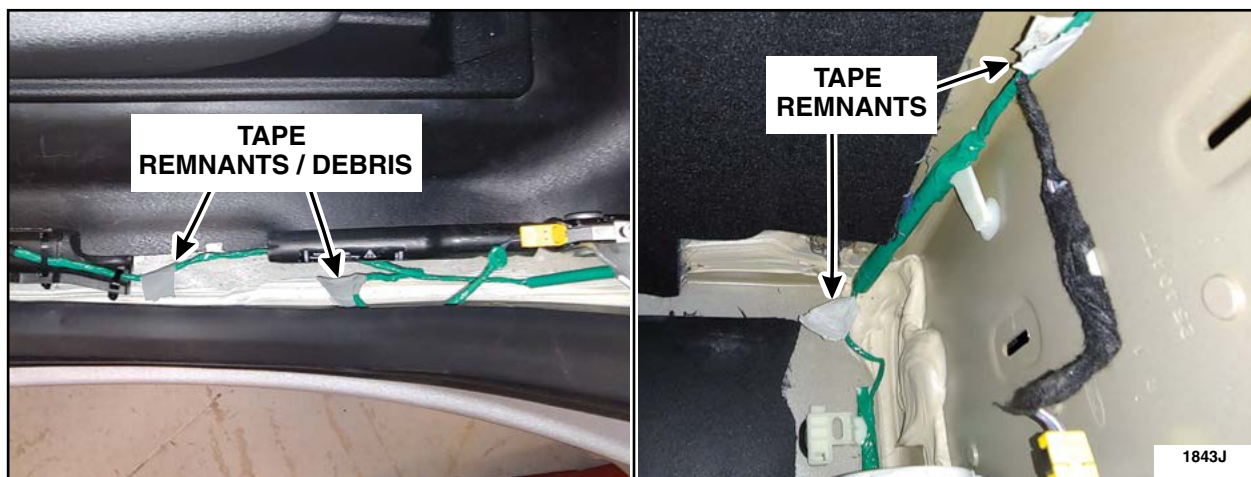


FIGURE 1



3. Cut two 28 in (711.2 mm) lengths of 2-1/2 in (63.5 mm) wide Nashua 324A or 3M 3340 foil tape.
4. Position the carpet upward to apply foil tape in the following steps.

NOTE: Position the foil tape in vehicle before removing the paper backing.

5. Apply the first length of foil tape. See Figures 2 and 3.
 - a. Position the first length of tape under the carpet and align with the edge of the carpet and the rear edge of the B-pillar to scuff plate notch. See Figure 2.
 - b. Start from the front, peeling the paper backing off of the tape while pressing the tape into the insulation and carpet. See Figure 3.
 - c. Continue applying the tape, ending at the rear of the vehicle cab. See Figure 3.**IMPORTANT! Ensure the edge of the tape stays aligned with the edge of the carpet while applying the foil tape. See Figure 2.**

NOTE: Carpet shown out of vehicle for clarity. Driver side shown, passenger side similar.

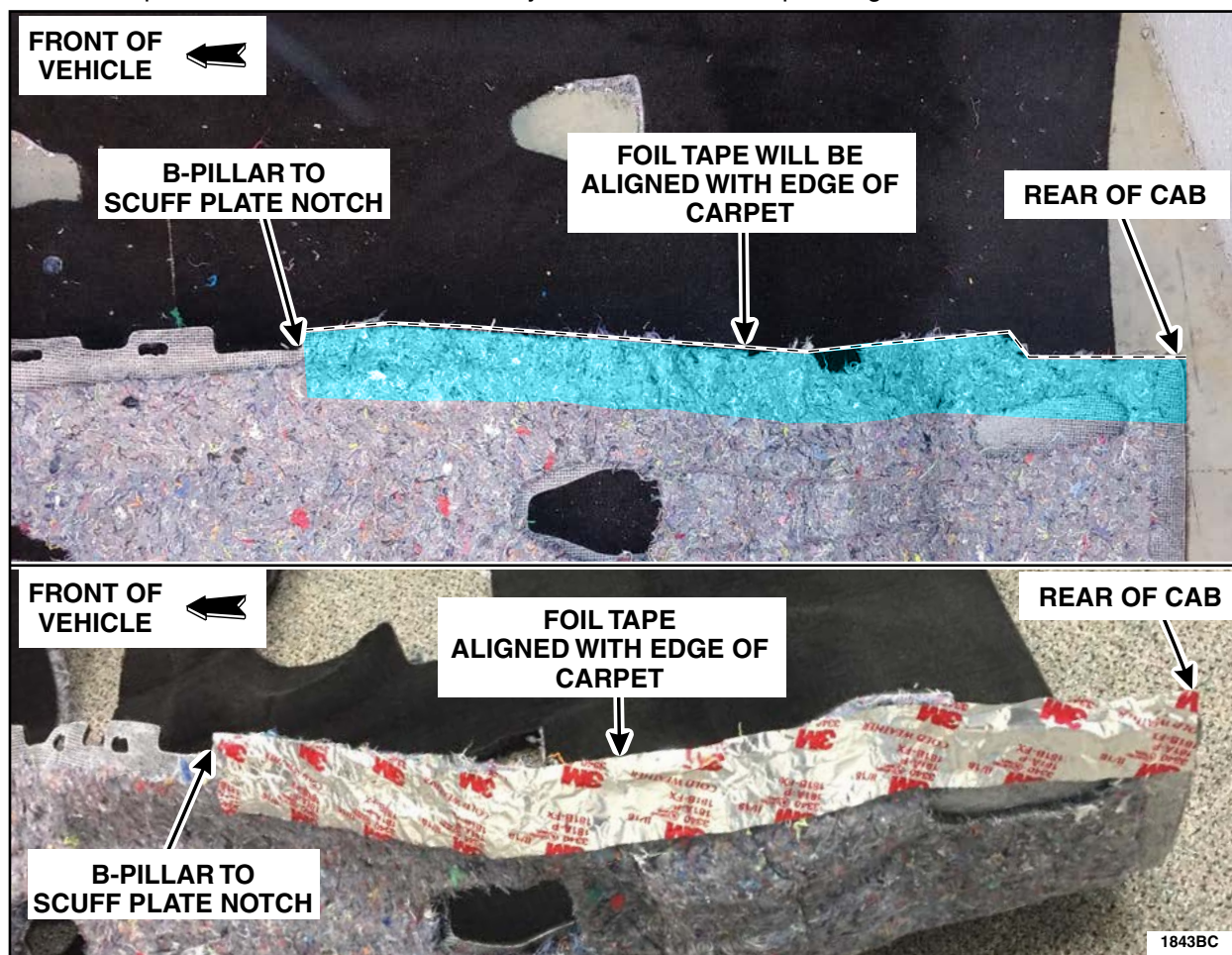


FIGURE 2



NOTE: Driver side shown, passenger side similar.

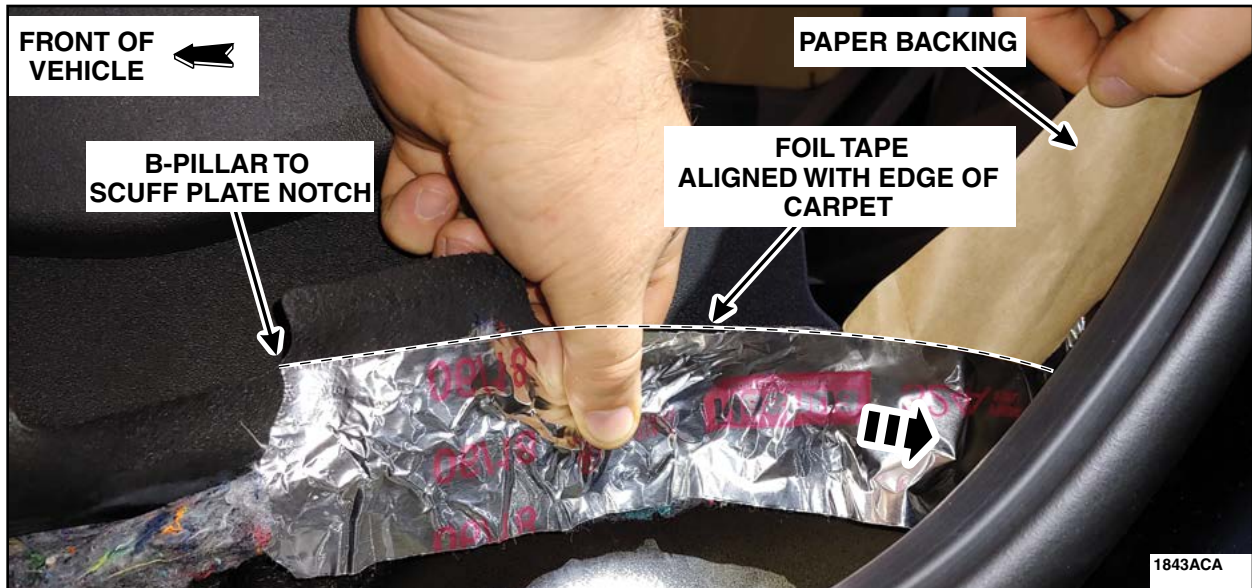


FIGURE 3

6. Apply the second length of foil tape overlapping the first. Start from the front, peeling the paper backing off the tape while applying, overlapping the first length of tape by 3/8 in (9.52 mm). See Figure 4.

NOTE: Carpet shown out of vehicle for clarity. Driver side shown, passenger side similar.



FIGURE 4



7. Wrap the foil tape around the top of the carpet. See Figure 5.

NOTE: Carpet shown out of vehicle for clarity. Driver side shown, passenger side similar.



FIGURE 5

8. Using hand pressure, pinch / crimp both sides of the applied foil tape to ensure positive adhesion with no exposed insulation. See Figure 6.

- Apply additional foil tape as needed to correct any gaps or improper overlap.

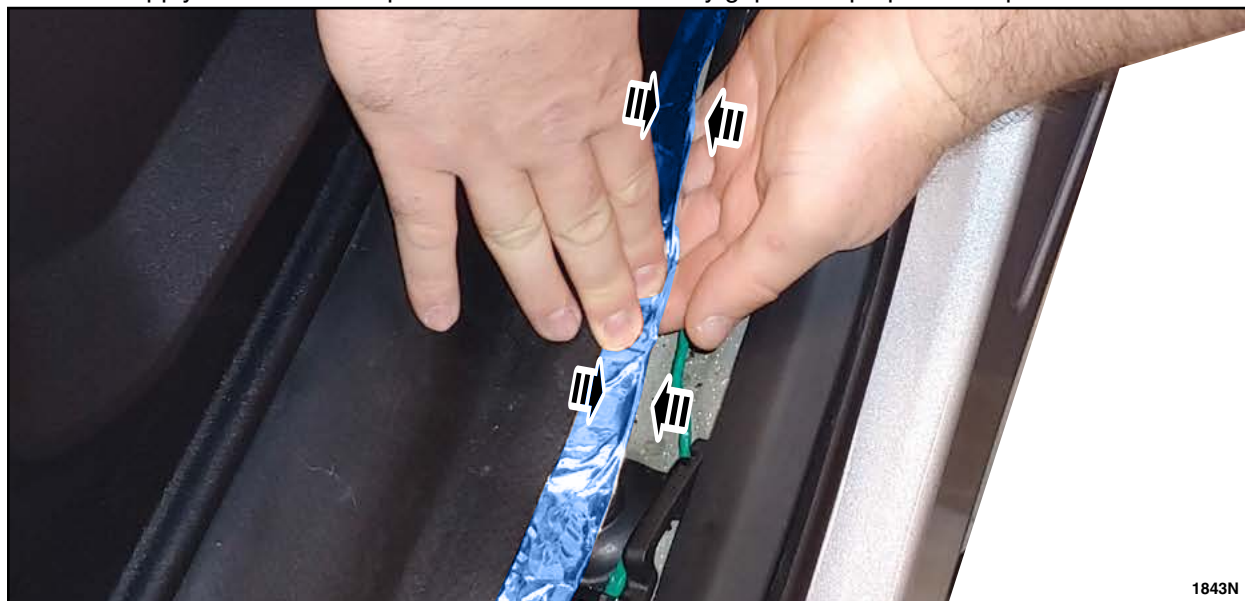


FIGURE 6



**IMPORTANT! Use caution not to tear or rip the foil tape while positioning the carpet into place.
Apply additional foil tape as needed to correct any gaps or improper overlap.**

9. Position the carpet back into its original position and hook the loops into the carpet retention clips.
See Figure 7.



FIGURE 7



Loadspace Trim Panel Inspection

NOTE: Vehicles built from the beginning of 2015 through mid July 2018 will be equipped with loadspace trim panels backed with insulation material similar to floor carpet insulation. Vehicles built after mid July 2018 are equipped with loadspace trim panels backed with a foam material.

1. Using an inspection mirror inspect the loadspace trim panel backside for either insulation type material or molded foam material. See Figures 8a and 8b.
 - If the loadspace trim panel has insulation material, foil tape will need to be installed, proceed to "Loadspace Trim Panel Foil Tape Installation" on Page 8.
 - If the loadspace trim panel has molded foam material, proceed to "B-Pillar Insulation Removal and Vehicle Reassembly" on Page 16.



FIGURE 8a



FIGURE 8b



Loadspace Trim Panel Foil Tape Installation

1. Remove the three push-pin retainers and the loadspace trim panel through the driver's side of the vehicle. See Figure 9a and 9b.

- Use caution not to bend, crease, or rub the panel against the vehicle jack when removing.

NOTE: Loadspace trim panel without cutout notch shown, loadspace trim panel with cutout notch similar.

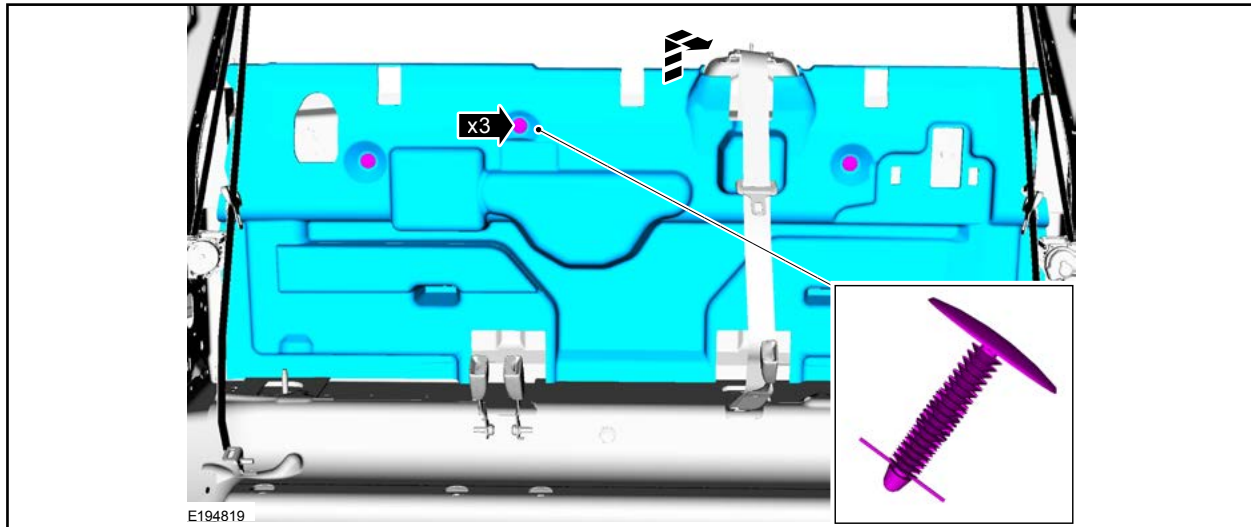


FIGURE 9a

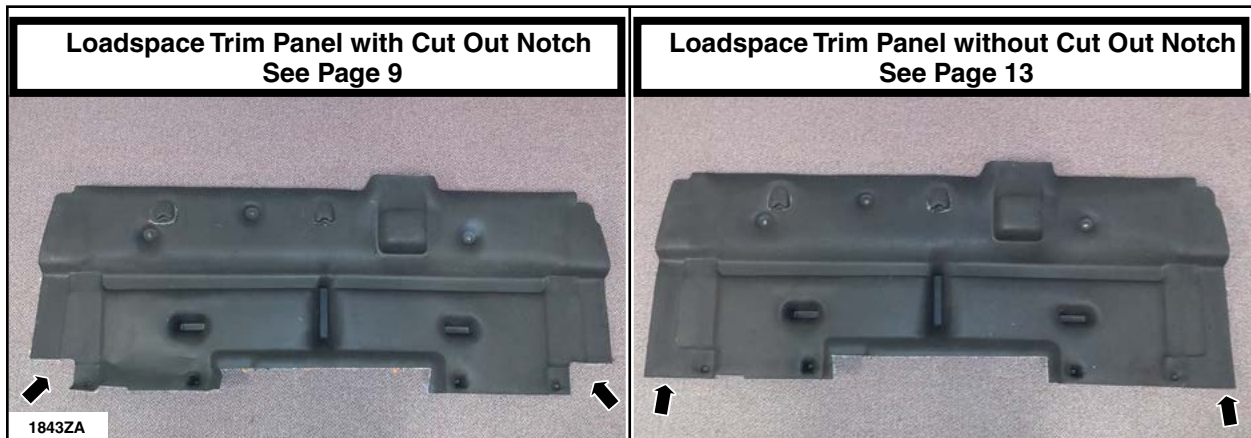


FIGURE 9b



Vehicles Equipped With Loadspace Trim Panel with Cut Out Notch

1. Cut the following lengths of 2-1/2 in (63.5 mm) wide Nashua 324A or 3M 3340 foil tape:
 - Four 20 in (508 mm) lengths
 - Two 8 in (203.2 mm) lengths
 - Two 6 in (152.4 mm) lengths
 - Two 5 in (127 mm) lengths
2. Remove the paper backing and apply the 6 in (152.4 mm) foil tape to the rear surface of the panel starting at the outboard bottom corner of the panel with the bottom edge of the tape aligned with the bottom edge of the panel and the edge of the tape aligned with the outboard edge of the notch. See Figure 10.
3. Remove the paper backing and apply the 8 in (203.2 mm) foil tape to the rear surface of the panel, starting at the outboard corner of the panel, with the bottom edge of the tape aligned to the bottom edge of the notch in the panel, and the edge of the tape aligned with the outboard edge. See Figure 10.

NOTE: Driver side shown, passenger side similar.

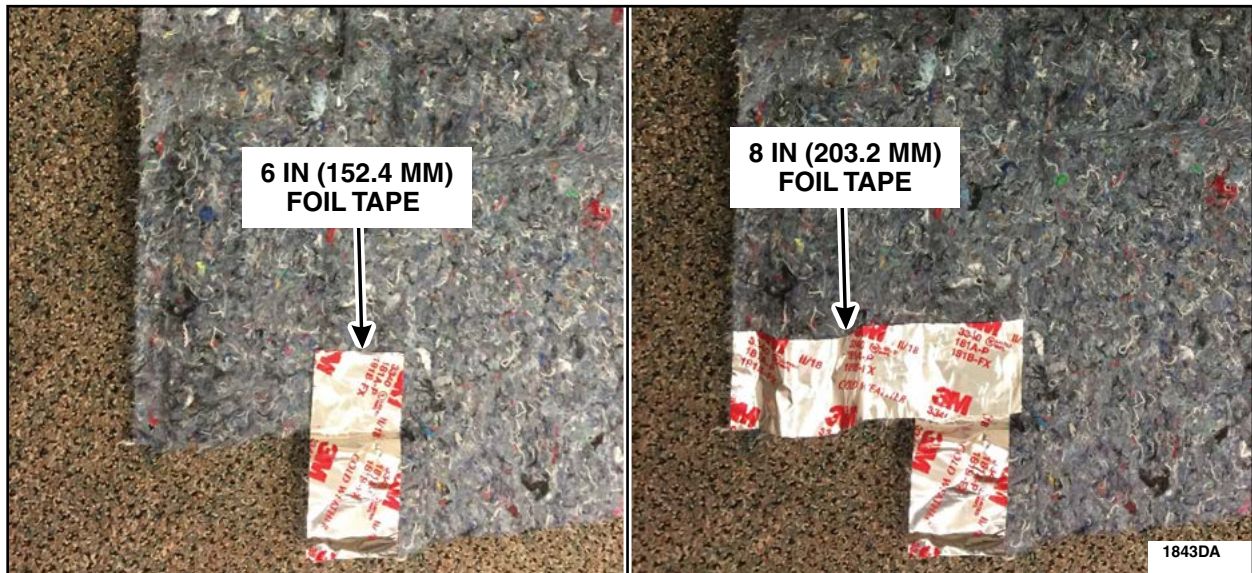


FIGURE 10



4. Remove the paper backing and apply the 20 in (508 mm) foil tape to the rear surface of the panel starting at the bottom of the notch at the top outboard corner aligning with the outboard edge of the panel. See Figure 11.
5. Remove the paper backing from the 4 in (101.6 mm) foil tape. Align the top of the tape with the top of the cutout notch, overlapping the previously applied foil tape by 1 in (25.4 mm). Wrap the foil tape to the front side of the panel. See Figure 11.

NOTE: Driver side shown, passenger side similar.



FIGURE 11



6. Remove the paper backing of the 6 in (152.4 mm) foil tape. Apply the foil tape by aligning the edge of the tape with the edge of the cut out notch, overlapping the previously applied foil tape by 1 in (25.4 mm). Wrap the foil tape to the front side of the panel. See Figure 12.
7. Remove the paper backing and apply the second 20 in (508 mm) foil tape to the rear surface of the panel overlapping the previously applied foil tape by 1 in (25.4 mm). Wrap the foil tape to the front side of the panel. See Figures 12 and 13.

NOTE: Driver side shown, passenger side similar.

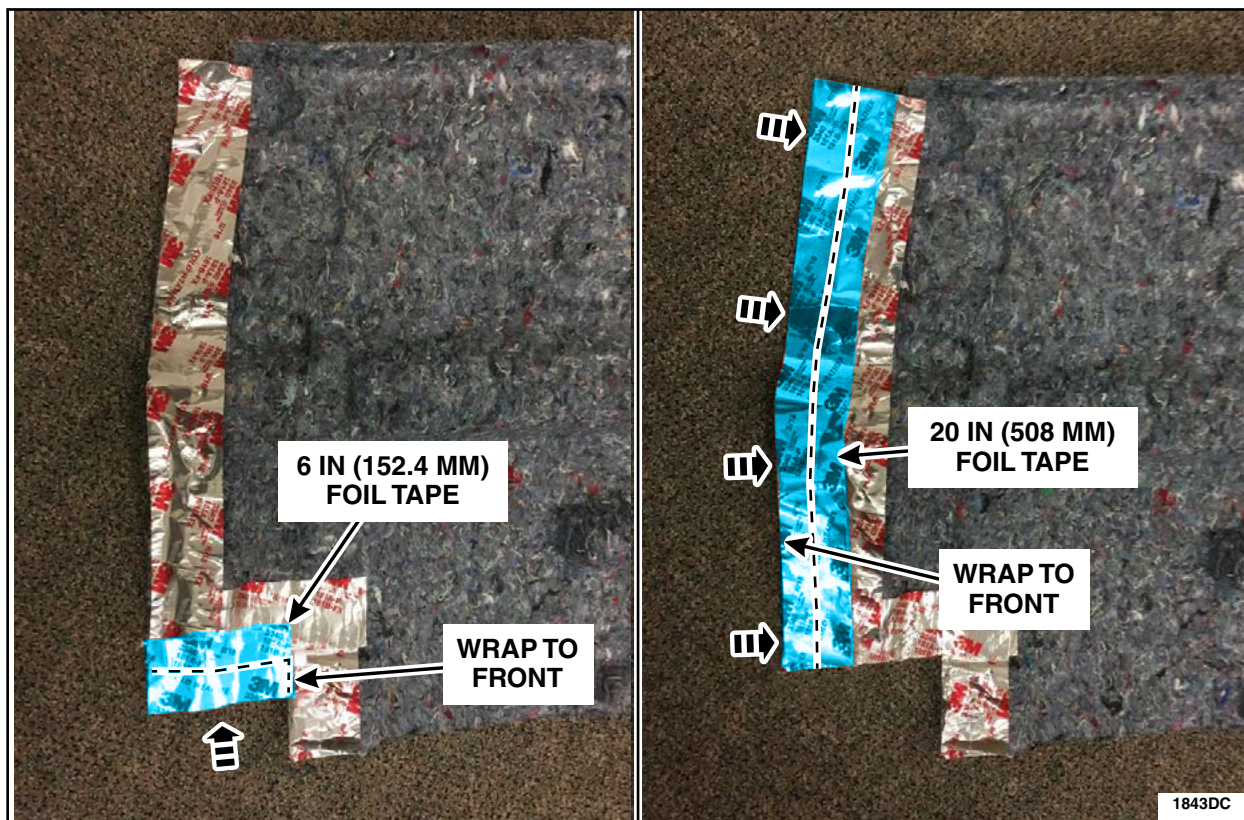


FIGURE 12



8. Apply an additional 3 in (76.2 mm) length of foil tape to seal the corner. See Figure 13.

NOTE: Driver side shown, passenger side similar.

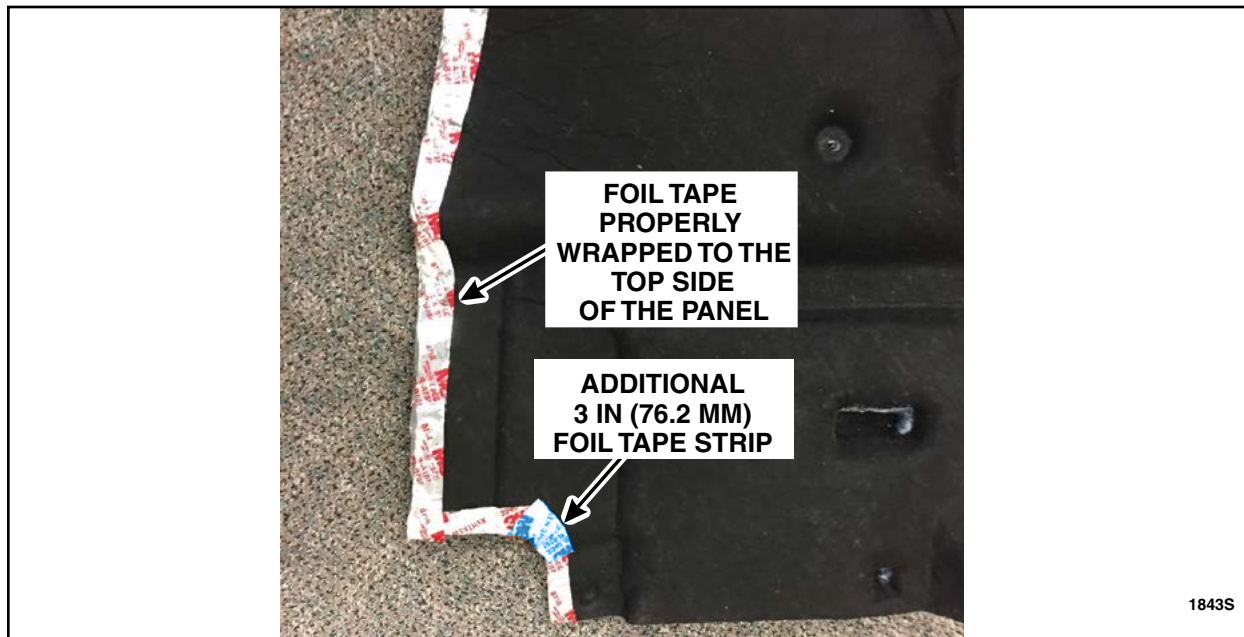


FIGURE 13

9. Using hand pressure, pinch / crimp both sides of the applied foil tape to ensure positive adhesion with no exposed insulation. See Figure 14.

- Apply additional foil tape as needed to correct any gaps or improper overlap.

NOTE: Driver side shown, passenger side similar.

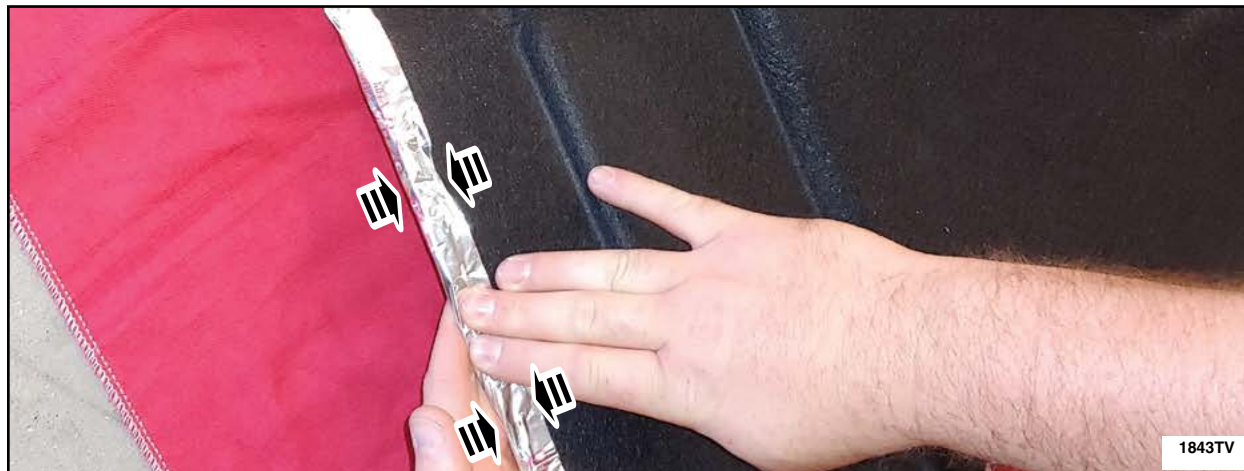


FIGURE 14



Vehicles Equipped With Loadspace Trim Panel without Cut Out Notch

1. Cut the following lengths of 2-1/2 in (63.5 mm) wide Nashua 324A or 3M 3340 foil tape:
 - Four 23 in (584.2 mm) lengths
 - Four 5 in (127 mm) lengths
2. Remove the paper backing from the 5 in (127 mm) foil tape. Align the edge of the tape with the bottom and outboard edges of the loadspace trim panel. See Figure 15.
3. Remove the paper backing and apply the 23 in (584.2 mm) foil tape to the rear surface of the panel starting at the bottom of the notch at the top outboard corner aligning with the outboard edge of the panel. See Figure 15.

NOTE: Driver side shown, passenger side similar.

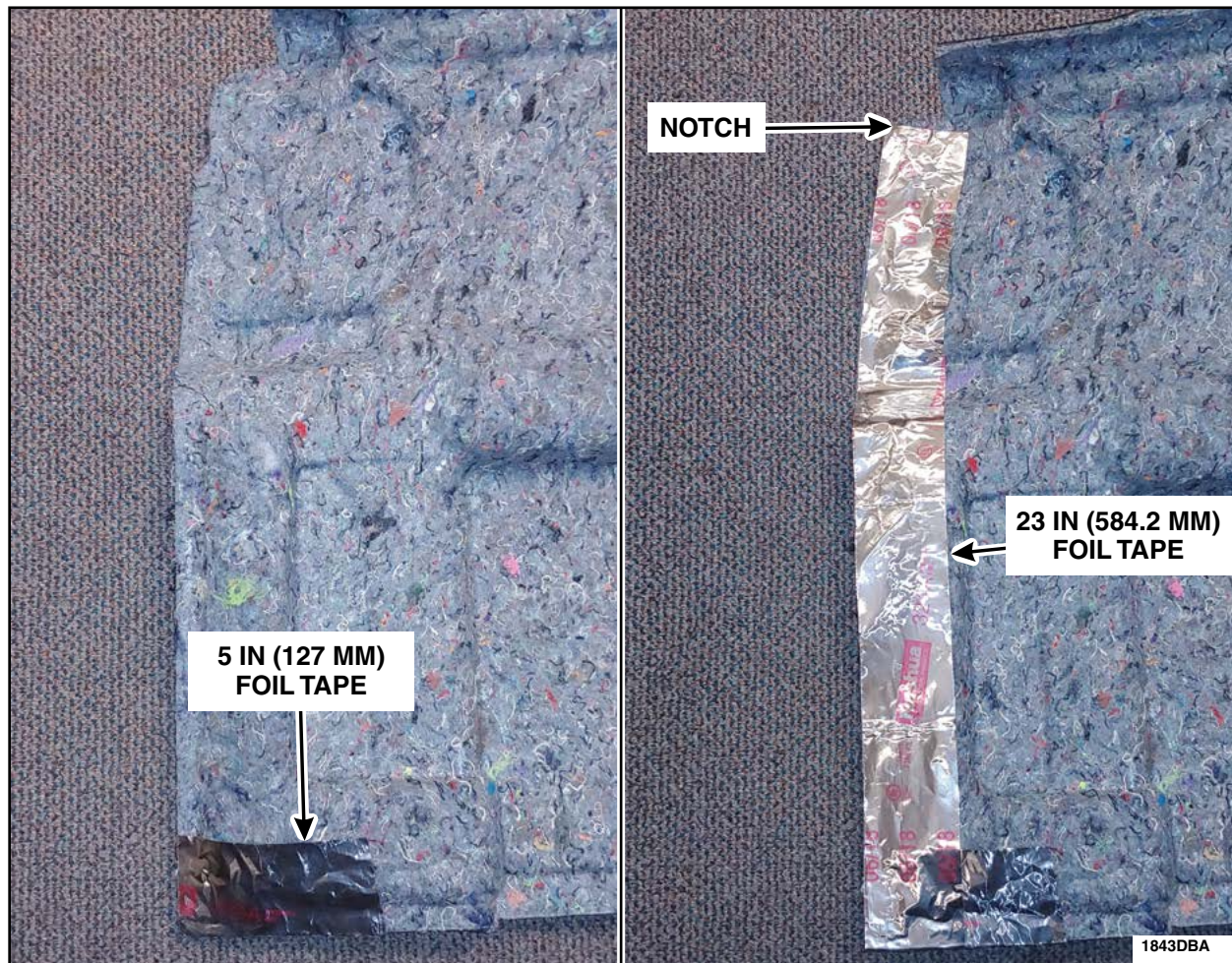


FIGURE 15



4. Remove the paper backing from the second 5 in (127 mm) length of foil tape. Align the edge of the tape with the bottom and outboard edges of the loadspace trim panel. See Figure 16.
5. Remove the paper backing and apply the second 23 in (584.2 mm) foil tape to the rear surface of the panel overlapping the previously applied foil tape by 1 in (25.4 mm). Wrap the foil tape to the front side of the panel. See Figures 16 and 17.

NOTE: Driver side shown, passenger side similar.

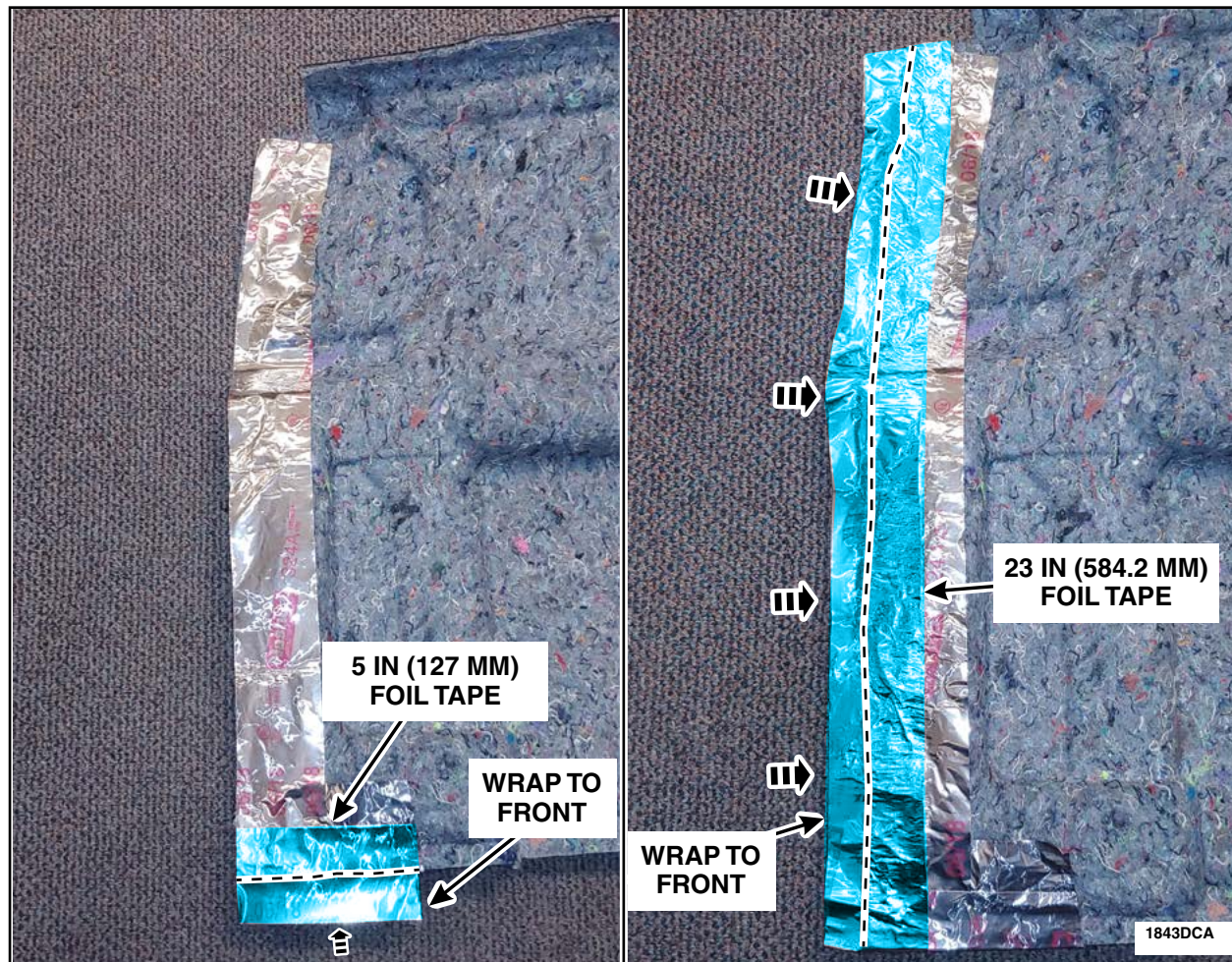


FIGURE 16



NOTE: Driver side shown, passenger side similar.



FIGURE 17

6. Using hand pressure, pinch / crimp both sides of the applied foil tape to ensure positive adhesion with no exposed insulation. See Figure 18.

- Apply additional foil tape as needed to correct any gaps or improper overlap.

NOTE: Driver side shown, passenger side similar.

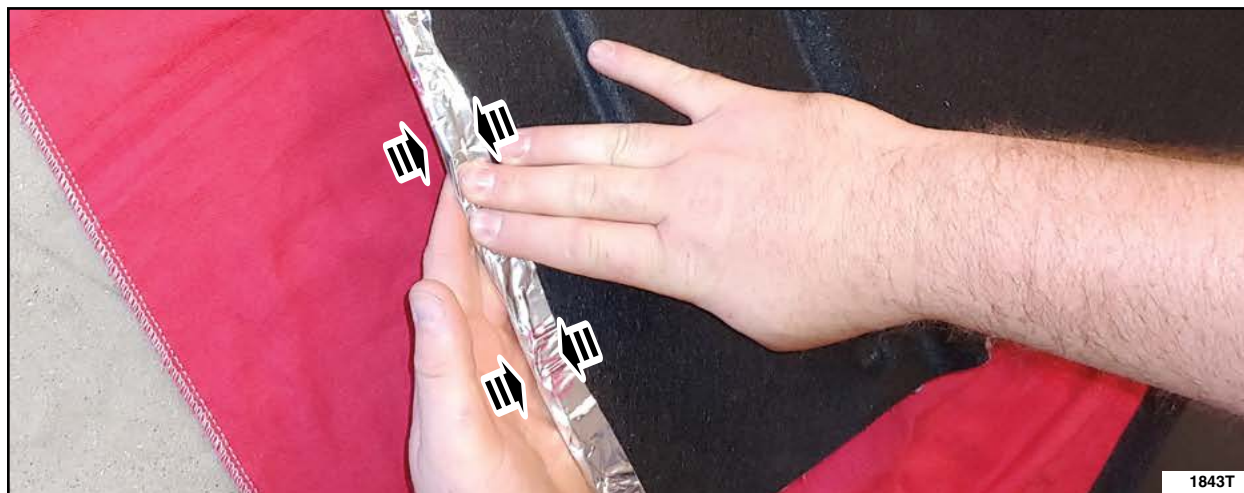


FIGURE 18



B-pillar Insulation Removal and Vehicle Reassembly

1. Remove the insulation from the B-pillar trim panels. See Figure 19.



FIGURE 19

2. Lightly use a die grinder with abrasive pad to remove any remaining cloth material from all of the plastic welds. See Figure 20.

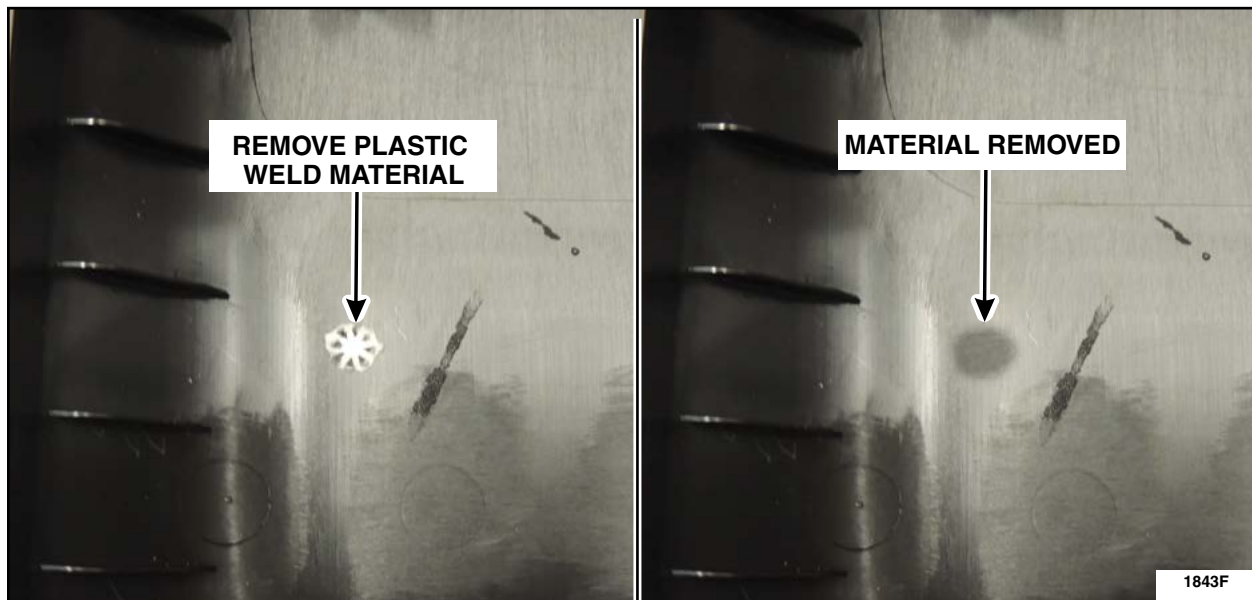


FIGURE 20



NOTICE: Do not use a knife to cut excess tape that is exposed. Damage can occur to the vehicle trim or carpet. Only use your hands or a plastic trim tool to adjust the foil tape.

3. Reassemble the vehicle by reversing the removal procedures.

- For appearance purposes, when reinstalling the vehicle trim panels inspect to ensure foil tape is not exposed with trim panels installed. See Figure 21.



FIGURE 21

4. Use a plastic trim tool to correct any areas where the door weather stripping may be pinched behind the installed B-pillars. See Figure 22.

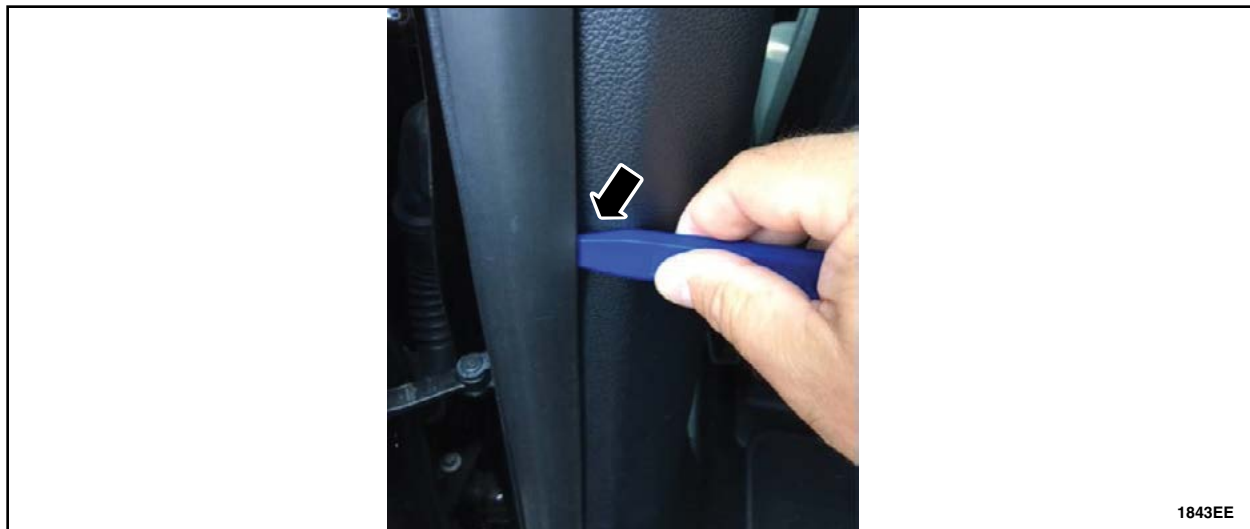


FIGURE 22

