

Isuzu

Drive Line Replacement

Remove and retain the body up switch for the re-install, per picture #1.

Remove and discard the hoist support, per picture #3.

Remove and discard the wire tie bracket inside the drive frame rail, per picture #8

Remove the drive line, retain the hardware for the new drive line, re-install.

The old drive shaft will not be reused.

Remove the batteries to gain access to bolts for new cross member.

Install Cross Member

The cross member mount plates are marked. It is very important they go in the right spot.

PT Passenger Top

PB Passenger Bottom

DT Driver Top

DB Driver Bottom

The cross member is also marked top and an arrow for the rear.

10 mm x 1" bolts are for the cross member to the mount plates. The nut must go on the inside of the cross member.

10 mm X 1-1/4" bolts are to fasten the mount plates to the frame with the exception of 2. One factory bolt and one 10 mm x 1-1/2" bolt both on the battery tray side. Go through the battery tray, per picture #2.

Install the passenger bottom first, due to the exhaust being tight to the plate. Loosely bolt the passenger bottom mount plate to the cross member before installing, it will help.

Install drive shaft with all arrow stickers in line like in picture #1 and #3. Reuse hardware from the removed drive shaft.

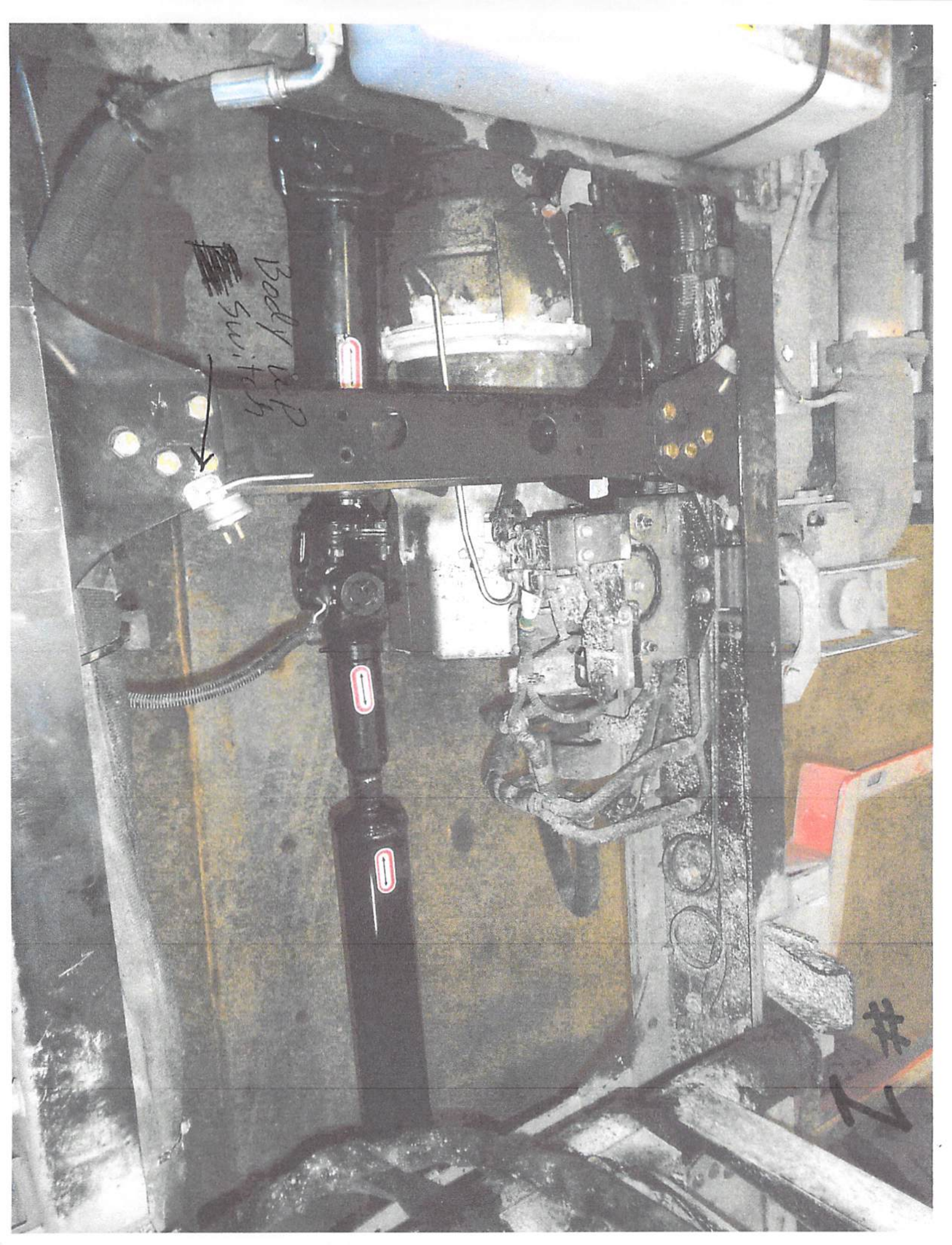
Add a rubber insulator to protect hydraulic lines from the cross member on the driver side as in Picture #6.

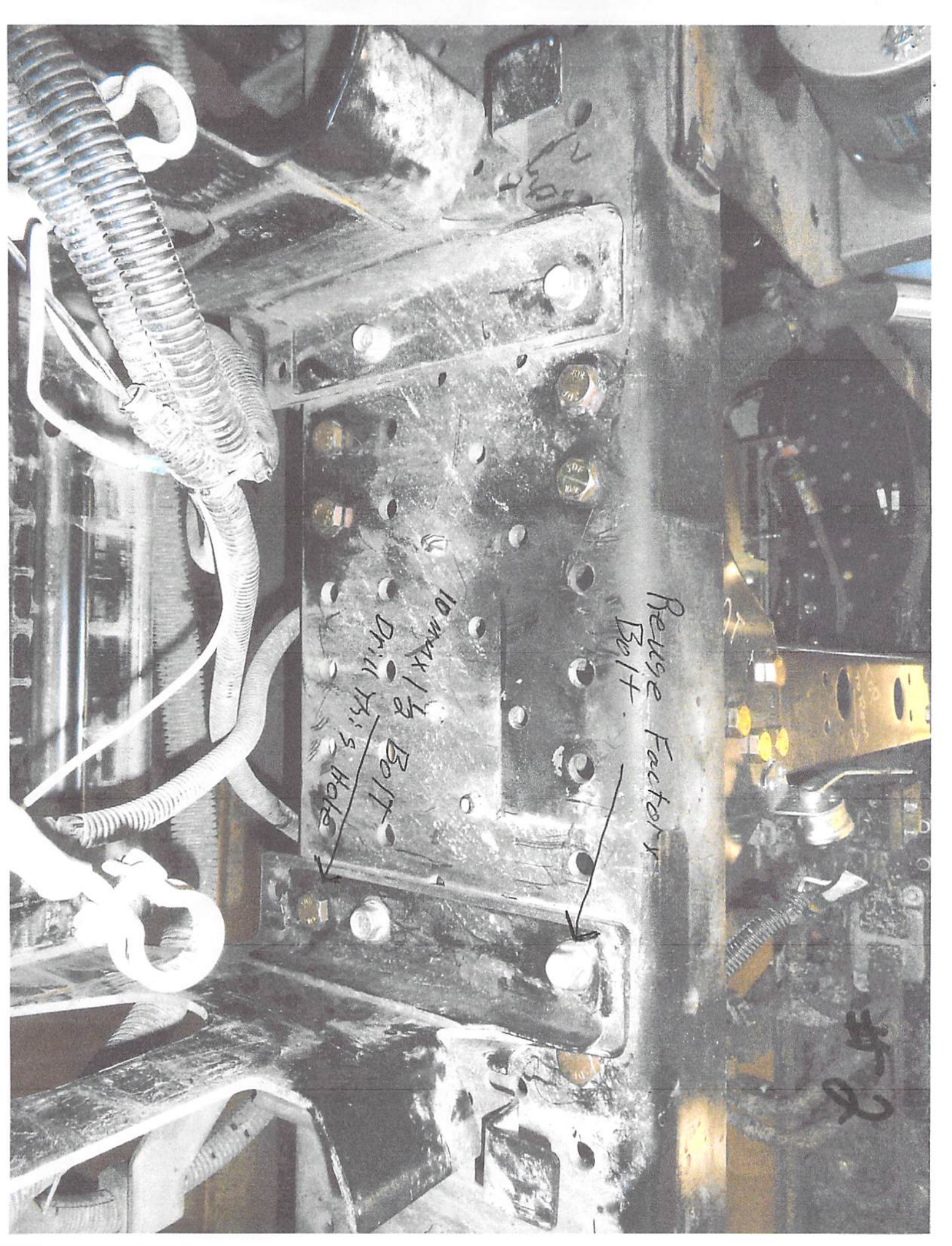
Install the body up switch as in picture #7. Check location and clearance before installation.

~~Body~~
Body & P
Switch



1





Reuse Factors Bolt

10mm x 1/2 Bolt - Drill 13.5 Holes

#2

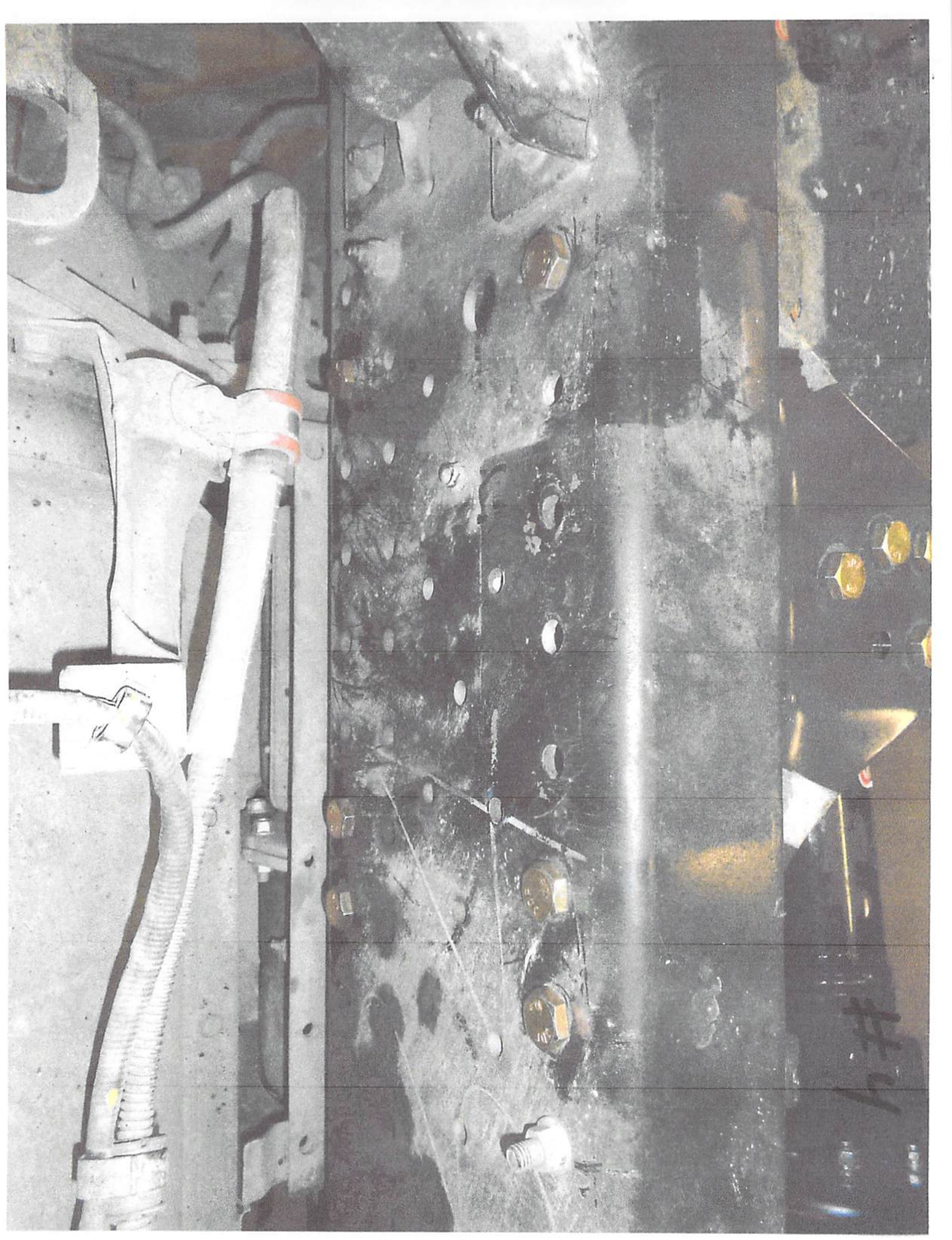


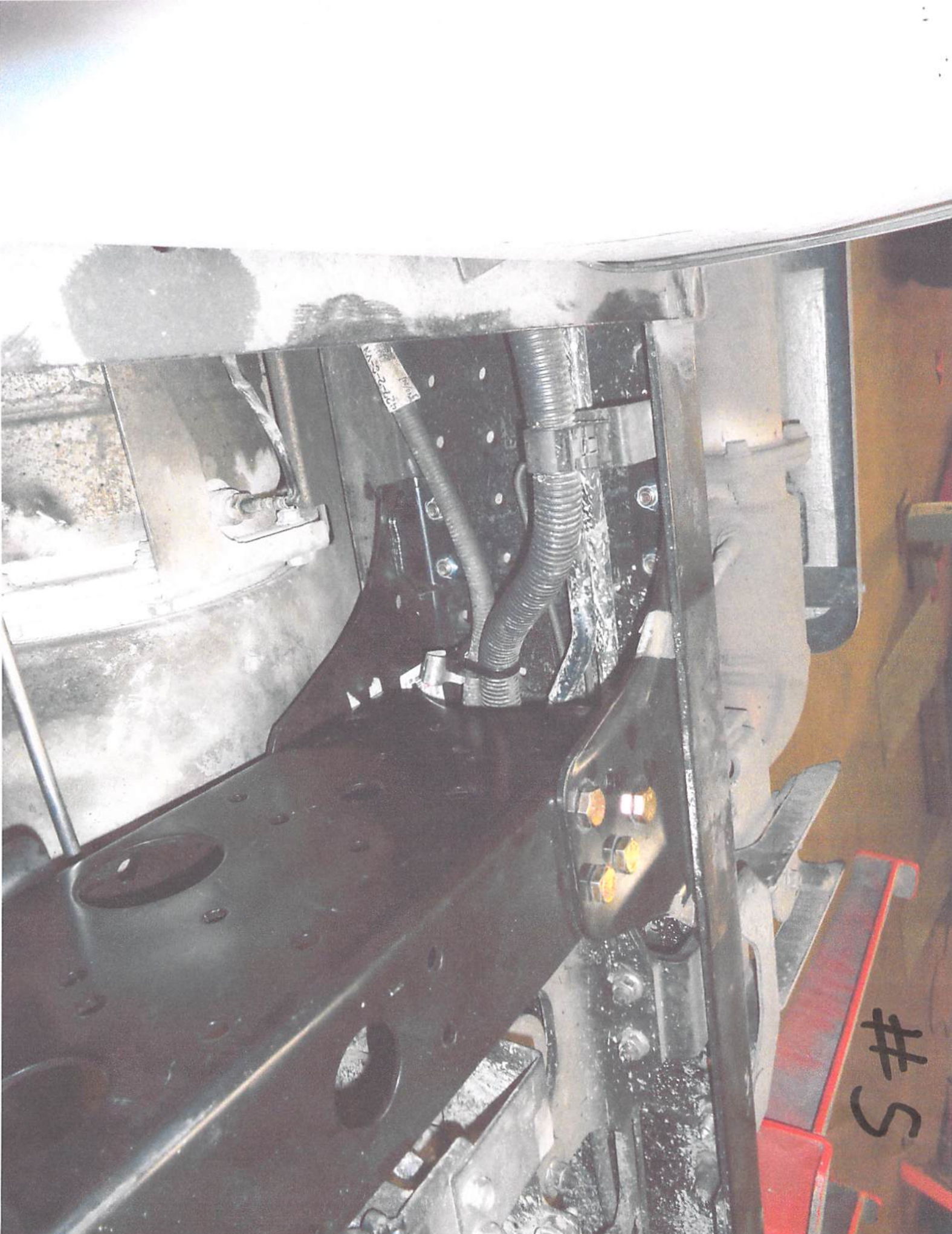
CAUTION

DRIVE LINE TO BOLTED TOGETHER
APPROX NEED WHEN W/P LINE

REMOVE AND DISCARD CROSS MEMBER IN ITS PLACE
Hoist support will work

#3





2-1-20

#5

4
2

ADD Rubber to insulate
Liners From cross members
on driver side

DB

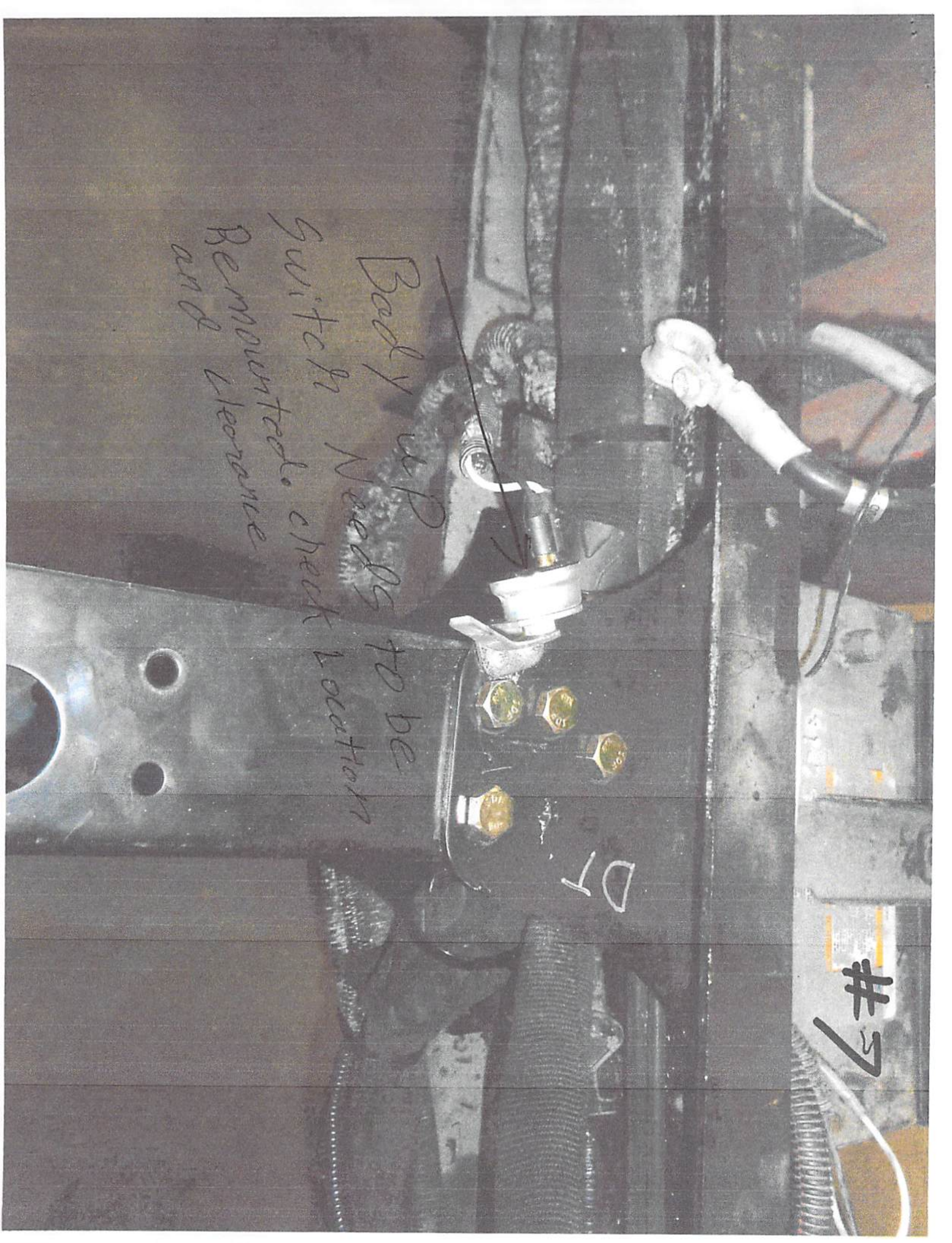


#6

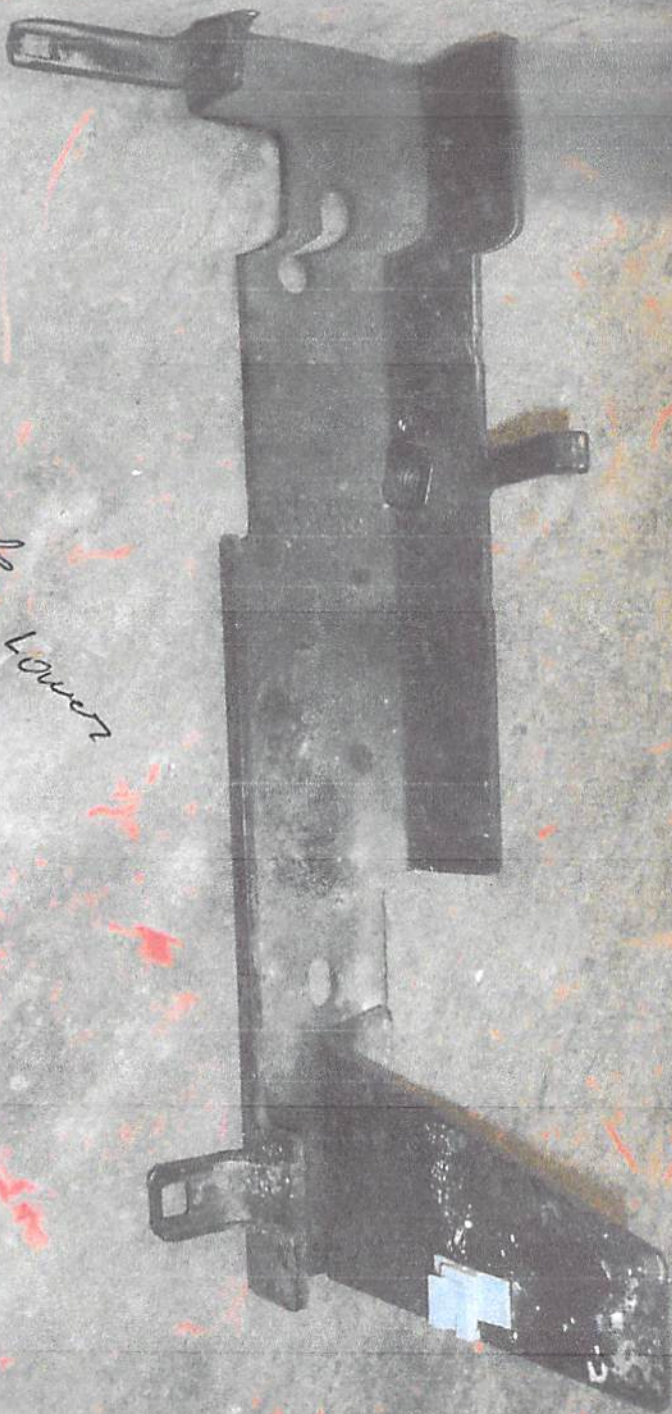
Body w/P
Switch Needs to be
Remounted. Check location
and clearance

D7

#57



Remove Driver Side Lower
Frame Rail inside Lower
and Discard
Use wire ties
in its place



#2