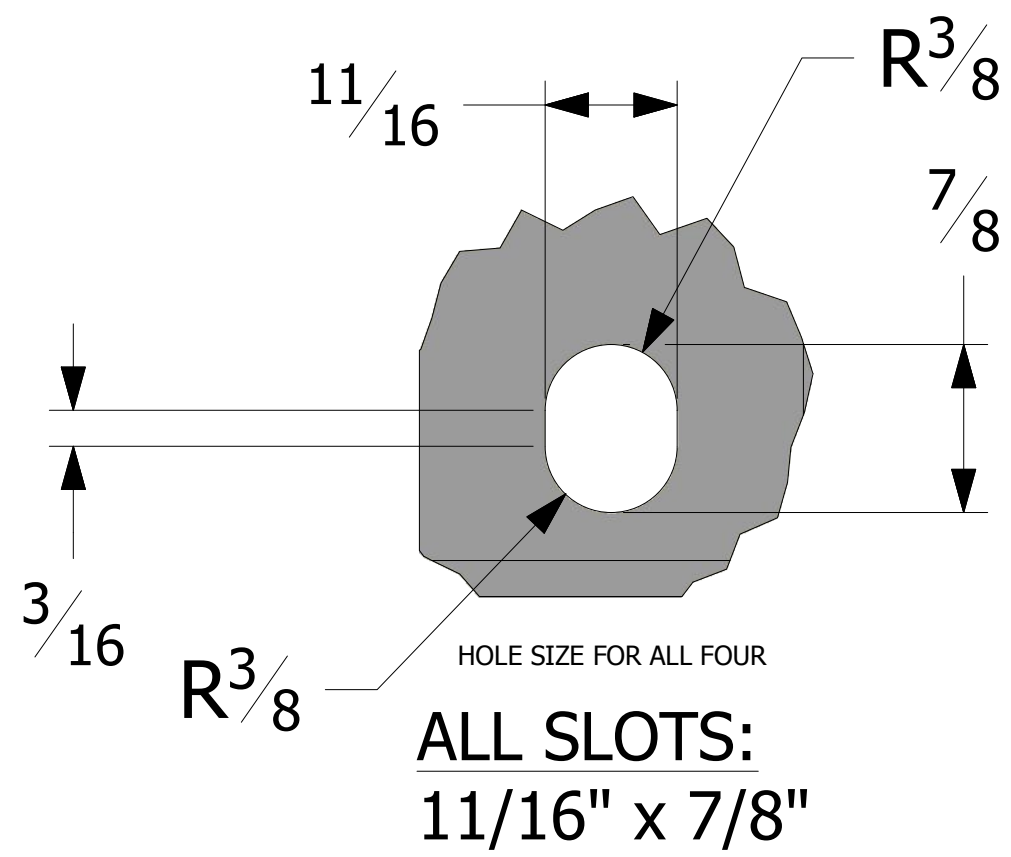
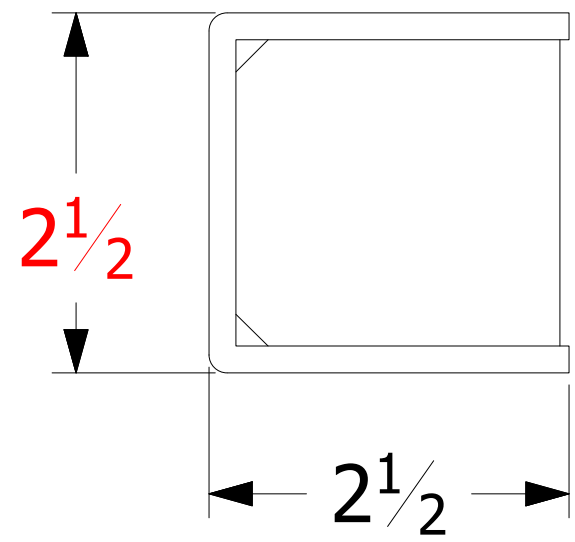
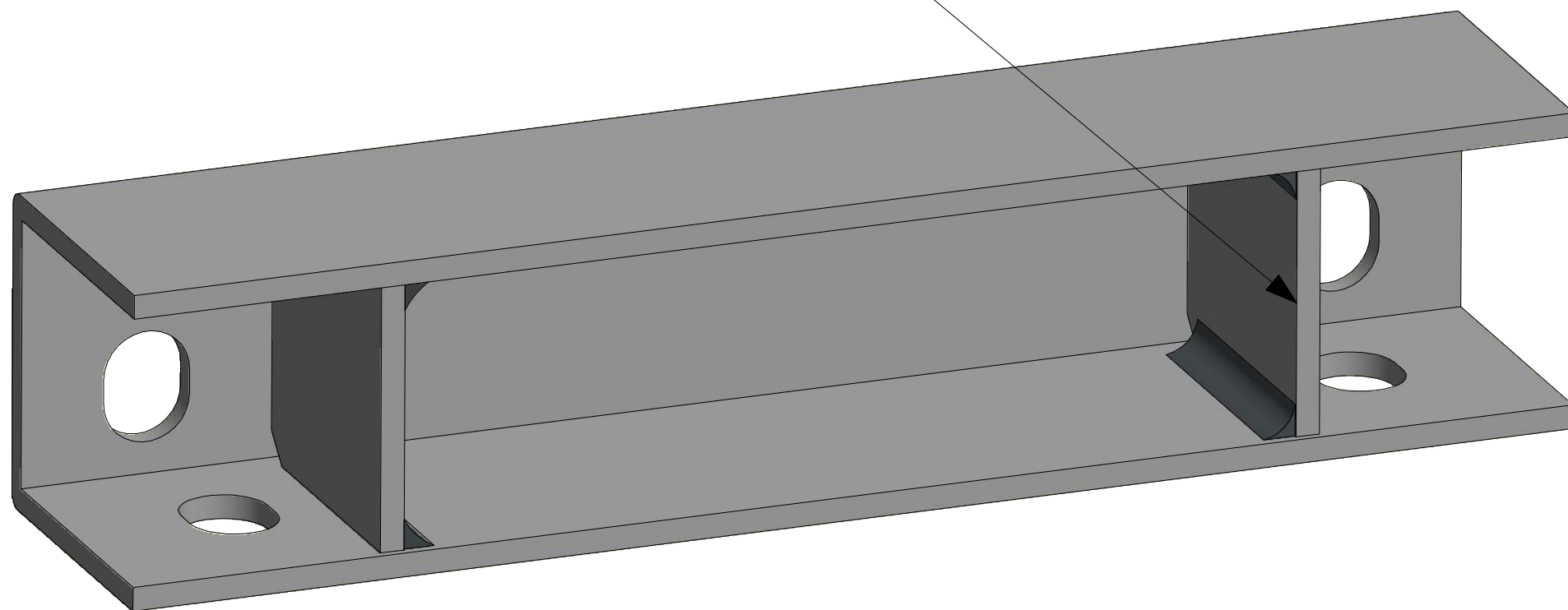


END VIEW

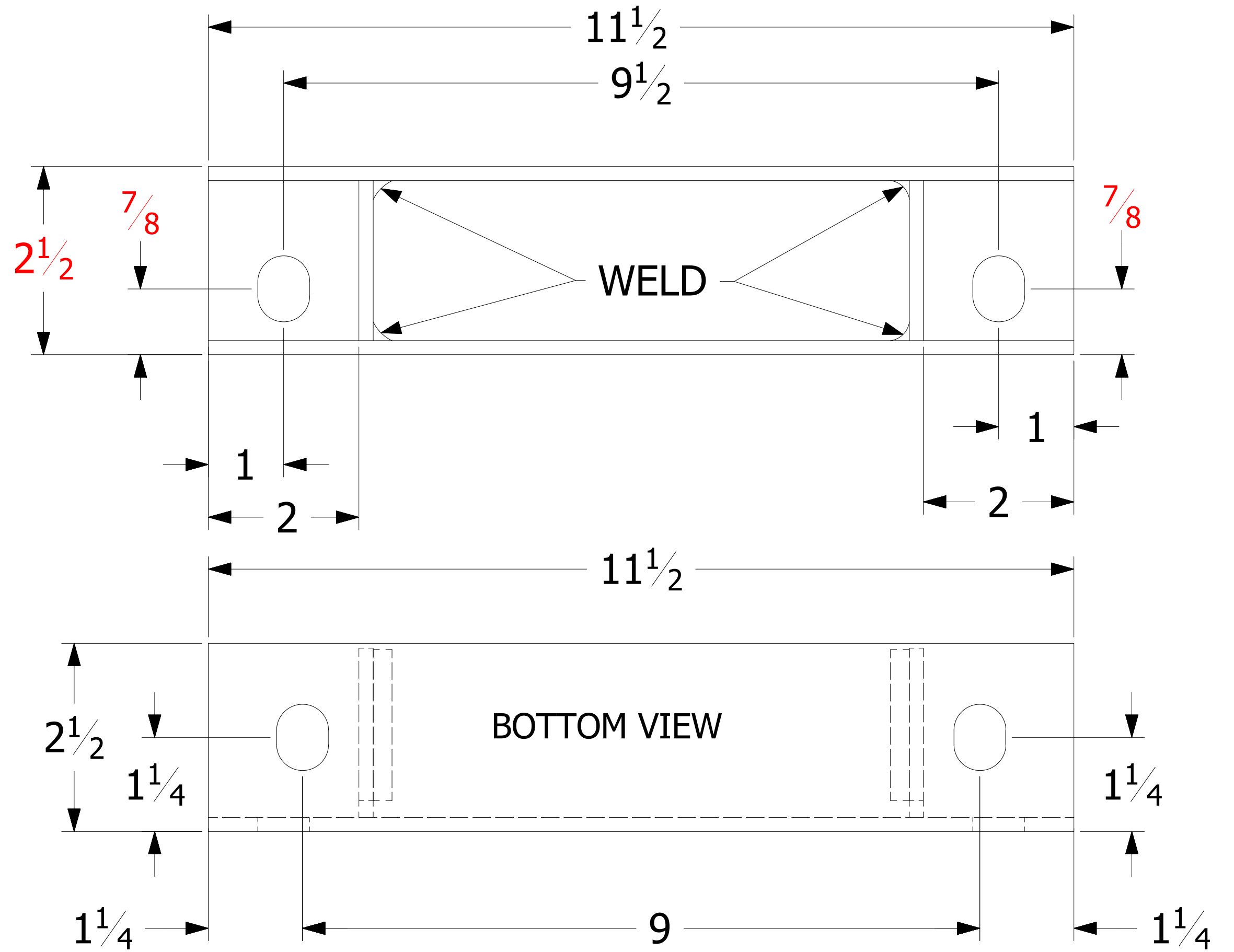


(2)-  
2 1/4" x 2 1/8"



PAINT: BLACK

MATERIAL: 7GA STEEL



REVISION HISTORY			
REV	DESCRIPTION	DATE	BY
X	INITIAL DRAWNG	4/12/2017	TLK
A	REVISE LENGTH AT 11" TO 11 1/2", BACK SLOTS AT 9" APART TO 9 1/2", BOTTOM SLOTS AT 8 1/2" TO 9"	6/27/2017	TLK
B	Revised Height to 2.5". Holes on back moved to .875" from bottom from 1"	10/17/17	KLM



**ROCKWOOD/FLAGSTAFF  
CLASSIC SUPER/  
SIGNATURE ULTRA  
LITE DIVISION  
PLANT #10-C**

FOREST RIVER INDUSTRIES, INC., CLAIMS PROPRIETARY RIGHTS IN THE MATERIAL DISCLOSED HEREIN. NEITHER THIS DRAWING NOR ANY REPRODUCTION THEREOF MAY BE USED TO MANUFACTURE ANYTHING SHOWN HEREIN WITHOUT PERMISSION IN WRITING FROM FOREST RIVER INC.

BY: tknepp	DATE: 4/12/2017	ANGULAR TOLERANCE: ±1°
		FRACTIONAL TOLERANCE: ±1/16

DESCRIPTION:

**5000 LB AXLE EXTENSION BRACKET**

GAUGE:	FR PART NO.	DWG NO. 02D17186	REV. A
SIZE C	APPROVED BY:	VENDOR: DHM- 1644	SHEET 1 OF 1