

CERTAIN 2015-2017 MODEL YEAR F-150 AND 2017 MODEL YEAR F-SUPER DUTY VEHICLES — DOORS WILL NOT CLOSE OR OPEN WHILE DRIVING

OVERVIEW

In the affected vehicles, a frozen door latch, or a bent or kinked door latch actuation cable, may result in a door will not open, door will not close, or door opens while driving condition, increasing the risk of injury. Before demonstrating or delivering any new in-stock vehicles involved in this recall, dealers are to install door latch water shields in the affected doors and repair any kinks in the latch actuation cables. This service must be performed on all affected vehicles at no charge to the vehicle owner.

NOTE: TSB 16-0155 is an equivalent repair to this safety recall. F-150 vehicles that had a claim paid for TSB 16-0155 were excluded from this program.

SERVICE PROCEDURE

Recommended Tool List:

General Tools	General Equipment
1/4" Drive Impact Driver	Flashlight
1/4" Drive Ratchet	
1/4" Drive Torque Wrench	
1/4" Drive Extension - 6" (152mm)	
1/4" Drive Socket - 7mm	
1/4" Driver Bit - T-20 Torx®	
1/4" Driver Bit - T-25 Torx®	
Small Pick	
Small trim removal tool	
Pocket Screwdriver	


Install door latch water shields in the affected doors. Refer to the chart below for affected doors:

Vehicle	Front Door	Rear Door
F-150 Regular Cab	ALL	-
F-150 Super Cab	ALL	ALL
F-150 Crew Cab	ALL	Built on/before September 1, 2016
F-Super Duty Crew Cab	Not Affected	Built on/before September 1, 2016



Front Door Latch Water Shield Kit Installation (All F-150 Vehicles)

NOTE: Front door latch water shields were phased into F-150 production in December 2016. For vehicles already equipped with water shields built in December 2016, it is not necessary to remove and replace the water shields on the front doors.

NOTE: To view a video demonstration of this repair procedure, click the video icon. 

NOTE: Procedure to be performed on both LH and RH sides.

NOTE: The window must be in the closed (up) position when performing this procedure.

1. Remove the front door interior trim panels. Please follow the Workshop Manual (WSM) procedures in Section 501-05.

NOTE: The interior grab handle cover clips can be reused for this repair. Only replace if damaged.

2. Remove the front door weather shields for access.

3. Inspect the interior door handle to latch cable for kinking. See Figure 1.

- Correct any kinks found in the cable by straightening the cable by hand as required.

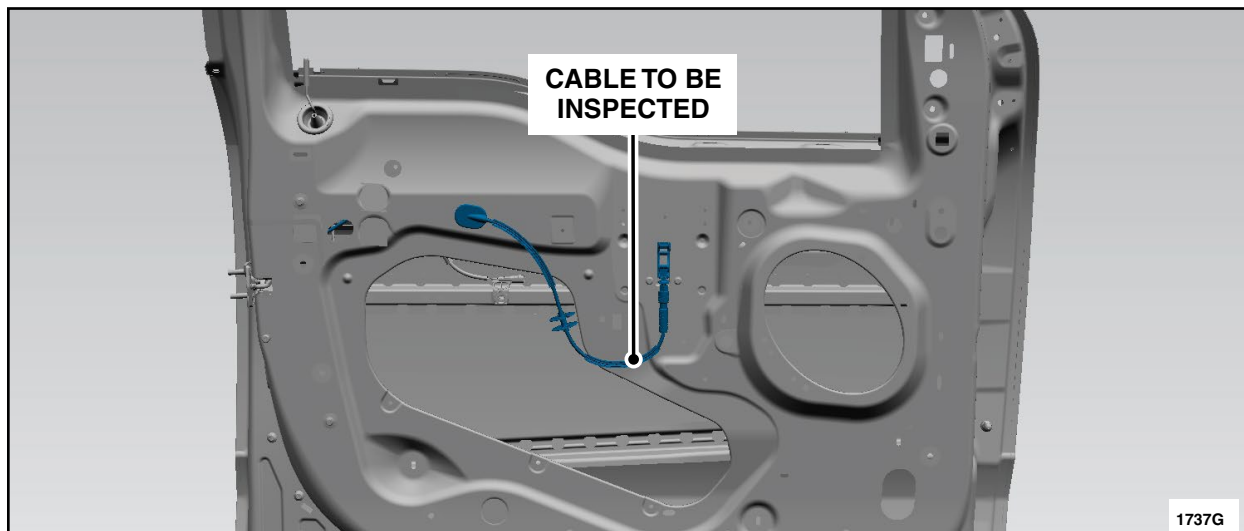


FIGURE 1



4. Remove the lock rod assemblies. See Figure 2.

- Use the male end of a 1/4" extension to spread apart the lock rod retainer and remove the rod from the door latch.

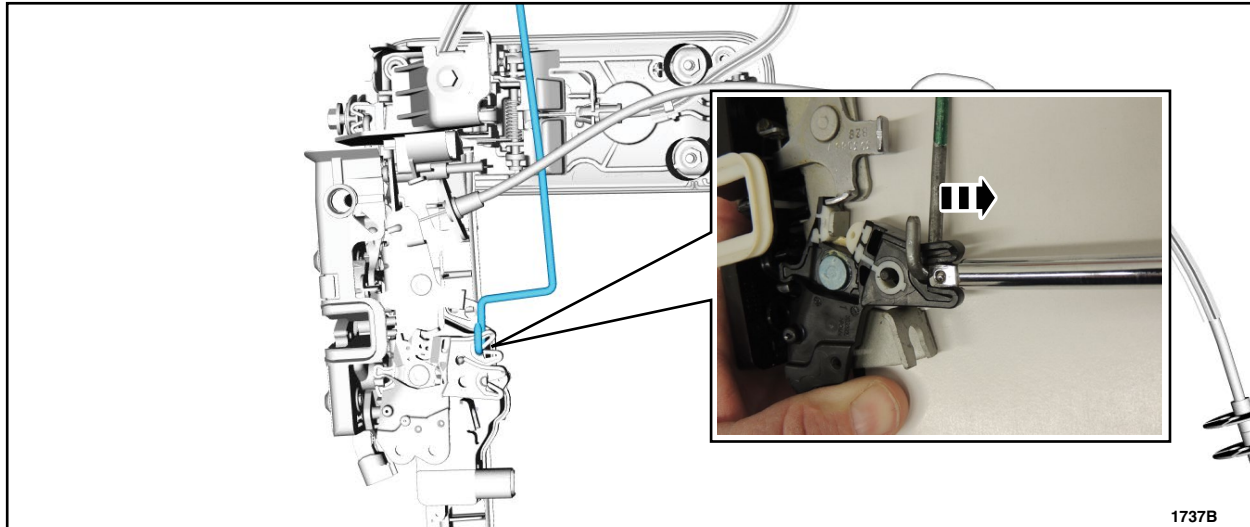


FIGURE 2

5. Using compressed air, blow out any debris or residual water from the latch assembly area.

6. Lubricate the door latch with Motorcraft® Multi-Purpose Grease or a quality equivalent white lithium grease spray.

- Do not use penetrating oils on the latches.

7. Loosen but do not remove the two door glass run bolts. See Figure 3.

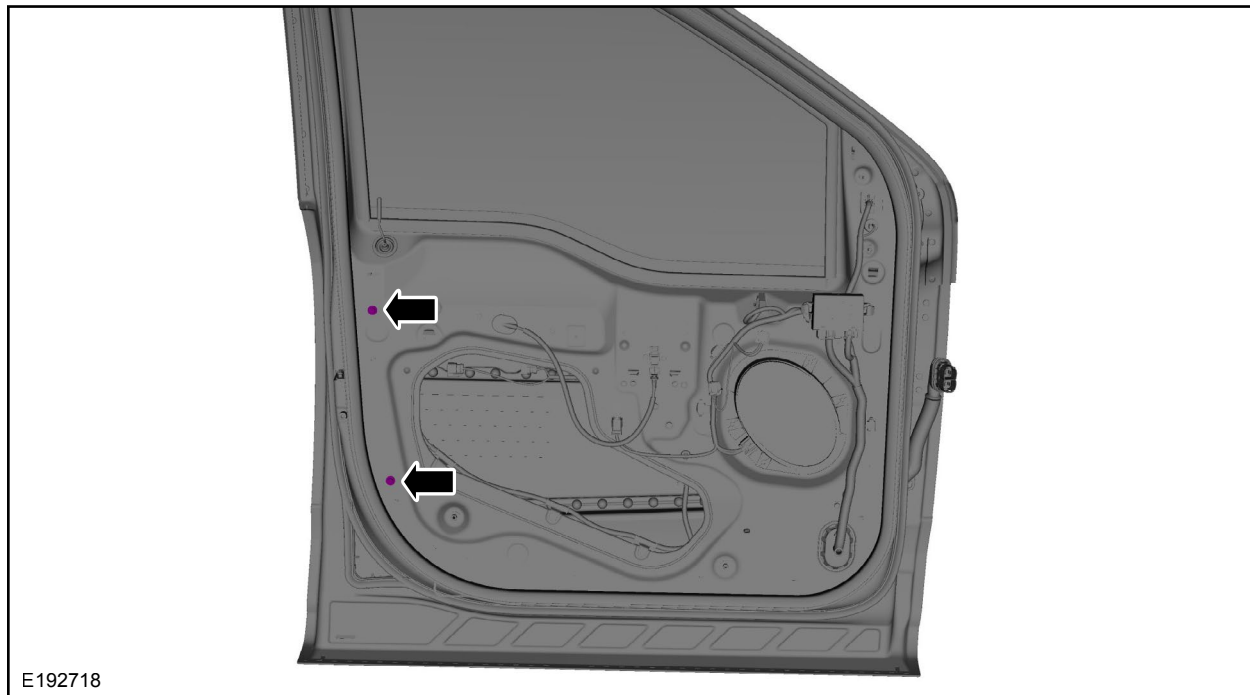


FIGURE 3



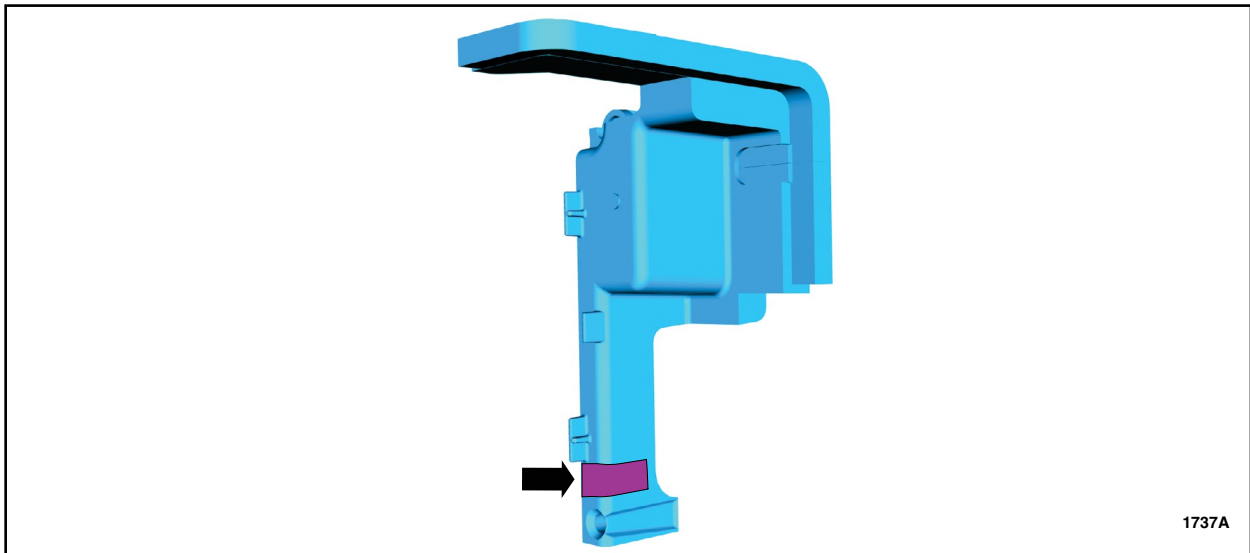
8. Loosen but do not remove the 3 door latch bolts. See Figure 4.



E192719

FIGURE 4

9. Apply supplied foam tape to the *new* shield in the highlighted area. See Figure 5.



1737A

FIGURE 5



10. With the latch and door glass run assembly loose inside the door panel, install the door latch water shield into position. See Figure 6.

NOTE: The water shield is properly installed when the locating tabs align with the window run, the latch cable is fitted in the notch of the water shield, and the fastener holes align.

11. Install the *new* screw into the top hole of the shield. See Figure 6.

NOTE: The lower fastener hole of the shield is not used on the front water shields.

NOTE: Driver side door latch shown, passenger side door latch similar.

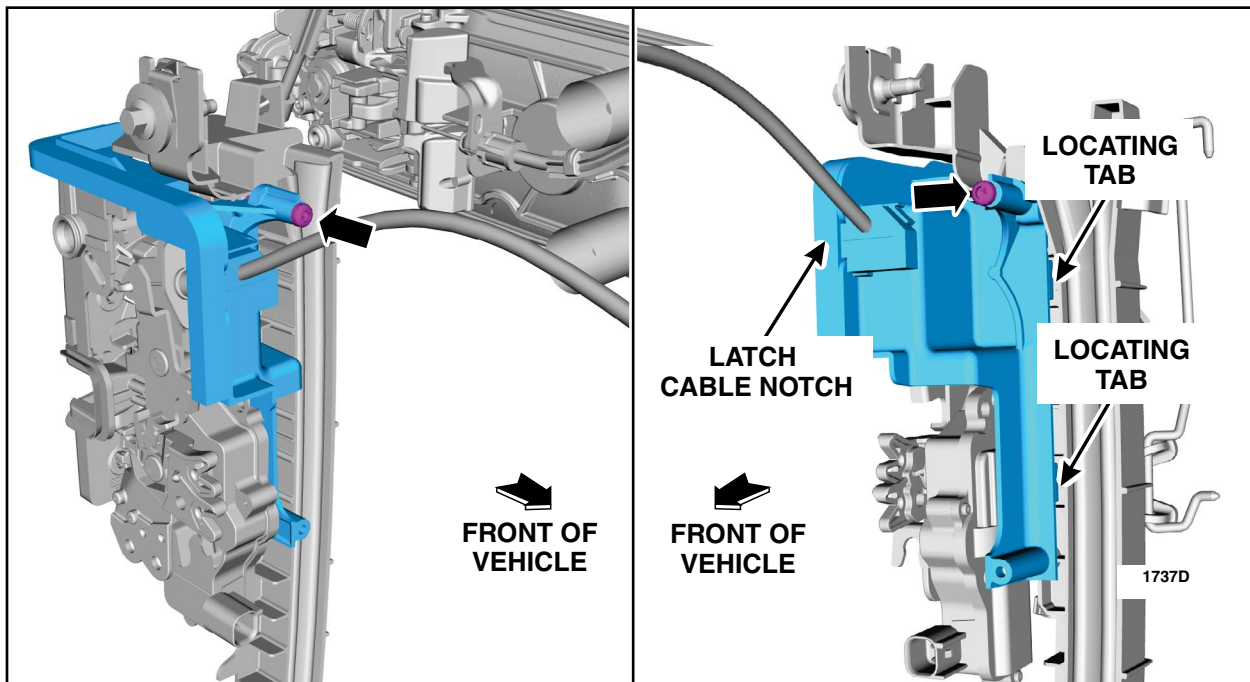


FIGURE 6



12. Tighten the two door glass run bolts. See Figure 3.

- 71 lb.in (8 Nm).

13. Tighten the three door latch bolts. See Figure 4.

- 71 lb.in (8 Nm).

14. Was the vehicle built on or before June 1, 2016?

Yes - Install a new lock rod to accommodate the new water shield. See Figure 7 and 8.

No - Verify the vehicle has the updated lock rod shown in Figure 8 and proceed to step 15.

NOTE: If the vehicle does not already have the updated lock rod, proceed with the lock rod replacement procedure.

NOTE: If a replacement lock rod already has a button and grommet installed, transfer of the components is not required.

- Transfer the grommet and button from the original lock rod to the *new* lock rod.
- Apply a bead of Motorcraft® instant gel adhesive (or equivalent) to the lock rod prior to threading the button into place.
- When threading the button onto the *new* lock rod, stop threading when some resistance is met.
- Ensure the right-hand and left-hand buttons are installed at similar heights.

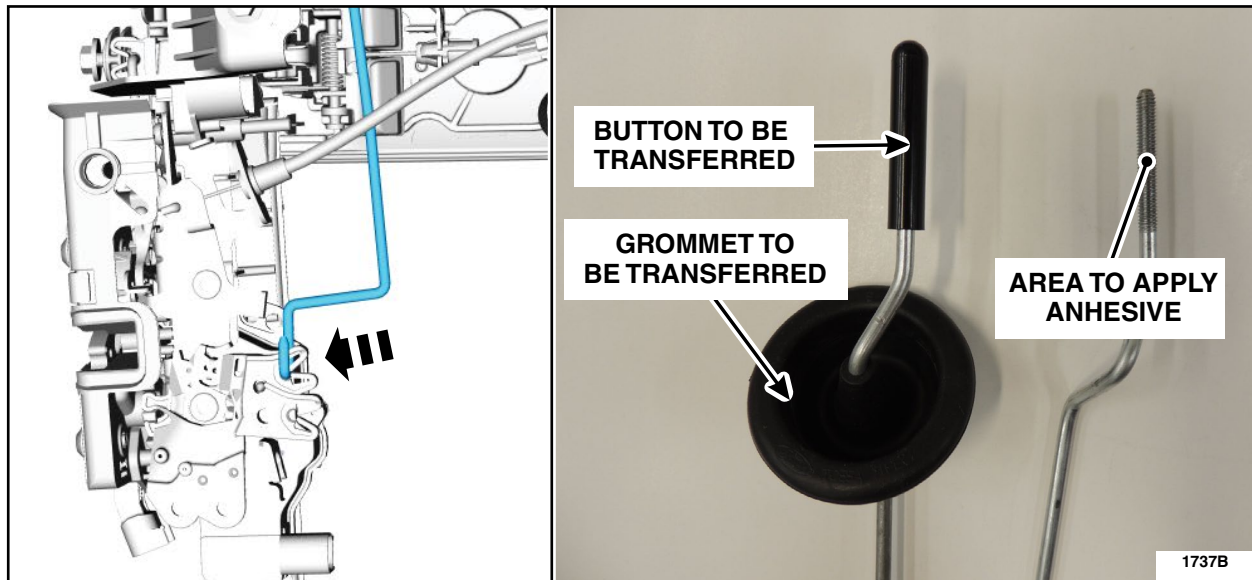


FIGURE 7



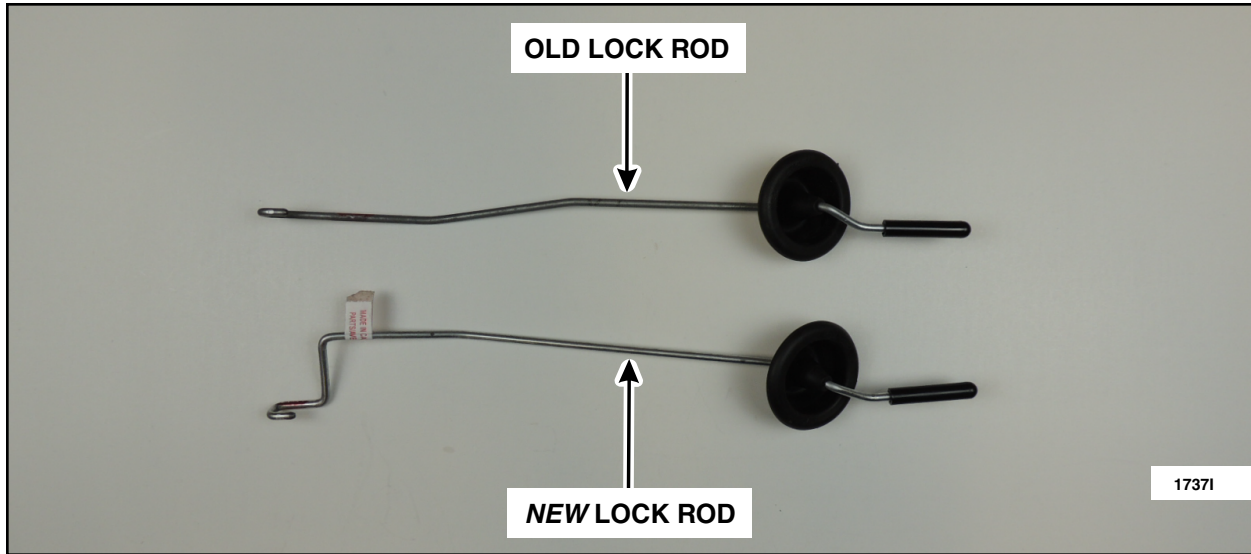


FIGURE 8


15. Install the door weather shield.

16. Install the front door interior trim panels. Please follow the WSM procedures in Section 501-05.

NOTE: The interior grab handle cover clips can be reused for this repair. Only replace if damaged.



Rear Door Latch Water Shield Kit Installation (Crew Cab vehicles only built on or before September 1, 2016)

NOTE: To view a video demonstration of this repair procedure, click the video icon. 

NOTE: Rear door latch water shields were phased into F-150 and F-Super Duty Crew Cab production in August 2016. For vehicles already equipped with water shields built in August 2016, it is not necessary to remove and replace the water shields present on the rear doors.

NOTE: Procedure to be performed on both LH and RH sides.

NOTE: The window must be in the closed (up) position when performing this procedure.

1. Remove the rear door interior trim panels. Please follow the WSM procedures in Section 501-05.
2. Remove the door panel weather shield for access.
3. Inspect the interior door handle to latch cable for kinking. See Figure 9.
 - Correct any kinks found in the cable by straightening the cable by hand as required.

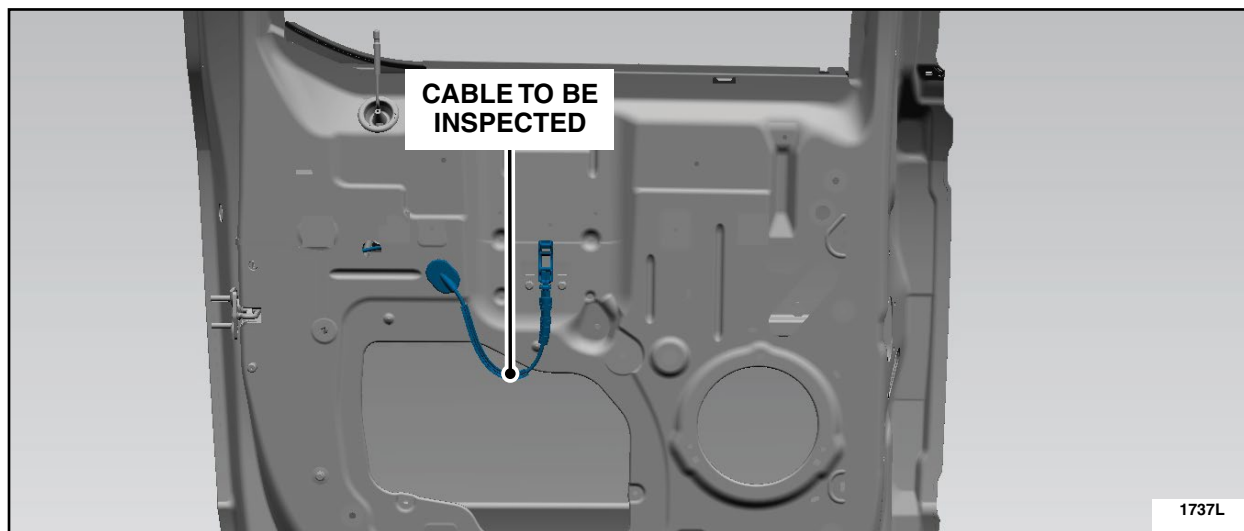


FIGURE 9



4. Remove the lock rod assemblies. See Figure 10.

- Use the male end of a 1/4" extension to spread apart the lock rod retainer and remove the rod from the door latch.

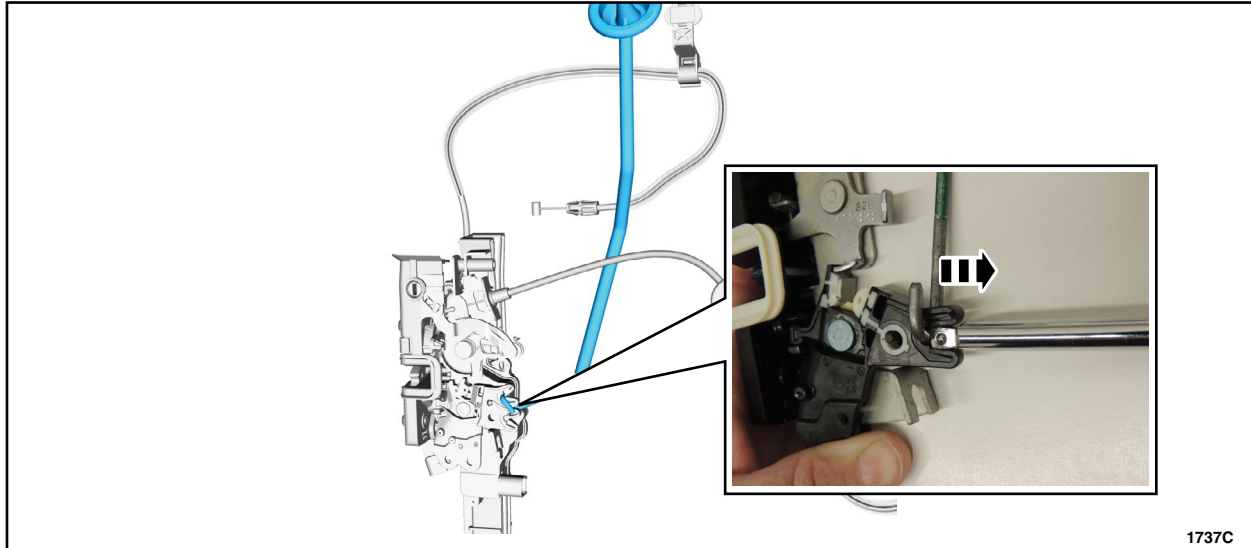


FIGURE 10

5. Using compressed air, blow out any debris or residual water from latch assembly area.
6. Lubricate the door latch with Motorcraft® Multi-Purpose Grease or a quality equivalent white lithium grease spray.
- Do not use penetrating oils on the latches.



7. Install the door latch water shield into position. See Figure 11.

NOTE: The water shield is properly installed when the latch cable is fitted in the notch of the water shield and the fastener holes align.

8. Install the *new* screws into the top and bottom holes of the shield. See Figure 11.

NOTE: Driver side door latch shown, passenger side door latch similar.

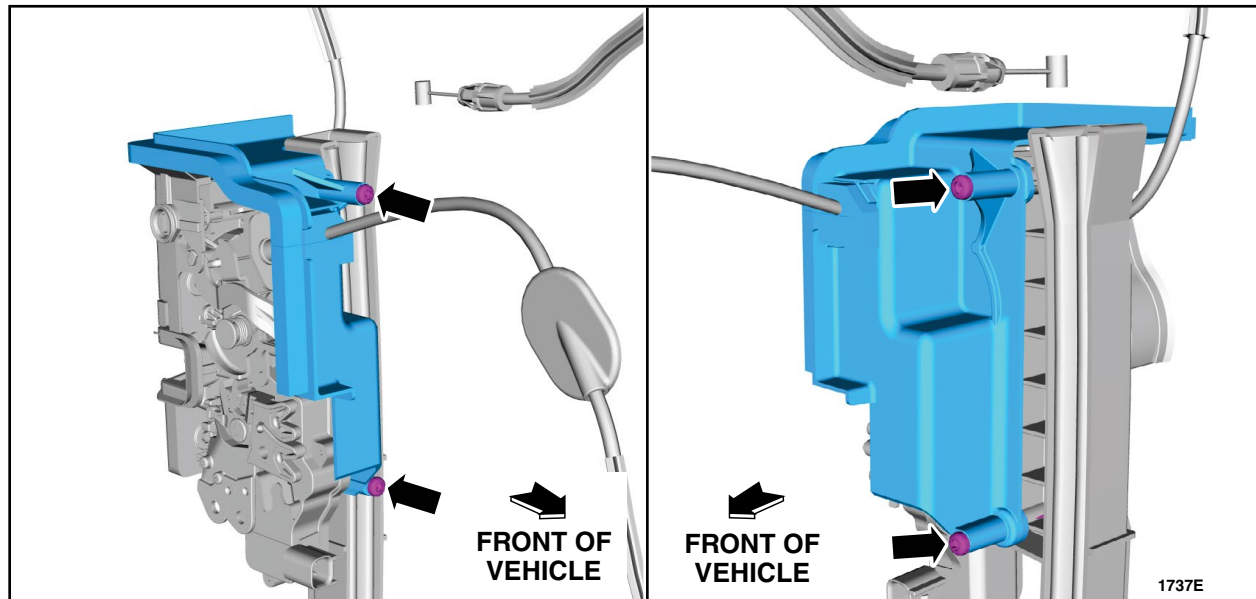


FIGURE 11



9. Was the vehicle built on or before June 1, 2016?

Yes - Install a new lock rod to accommodate the new water shield. See Figure 12 and 13.

No - Verify the vehicle has the updated lock rod shown in Figure 13 and proceed to step 10.

NOTE: If equipped with manual locks, lock rod replacement is not necessary.

NOTE: If the vehicle does not already have the updated lock rod, proceed with the lock rod replacement procedure.

NOTE: If a replacement lock rod already has a button and grommet installed, transfer of the components is not required.

- For replacement lock rods only. Transfer the grommet , sleeve and button from the original lock rod to the *new*.
- Apply a bead of Motorcraft® instant gel adhesive (or equivalent) to the lock rod prior to threading the button into place.
- When threading the button onto the *new* lock rod, stop threading when some resistance is met.
- Ensure the right-hand and left-hand buttons are installed at similar heights.

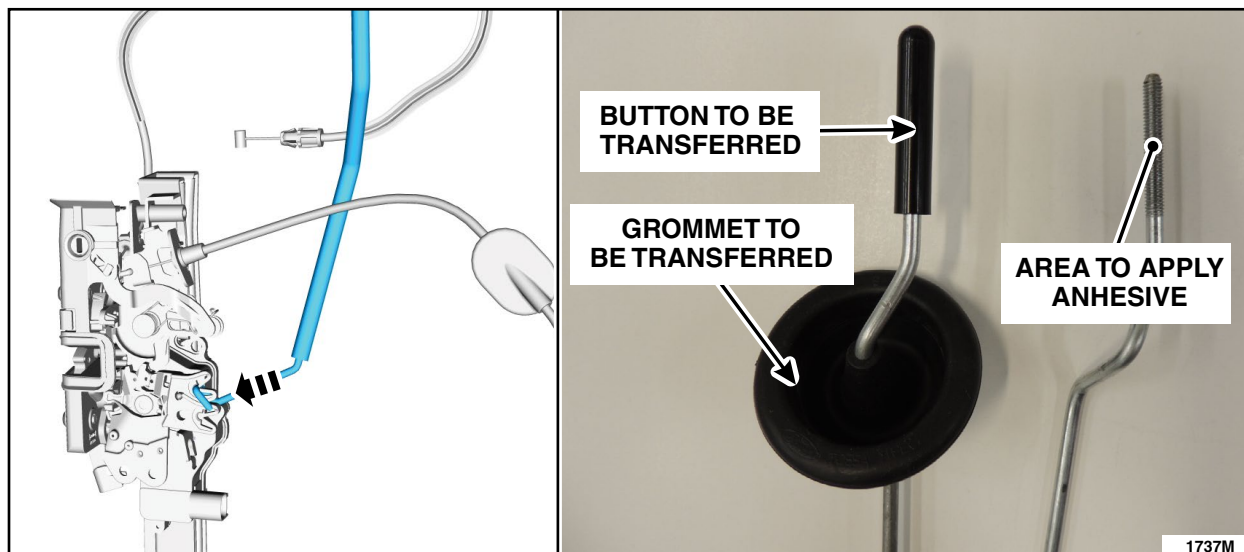


FIGURE 12



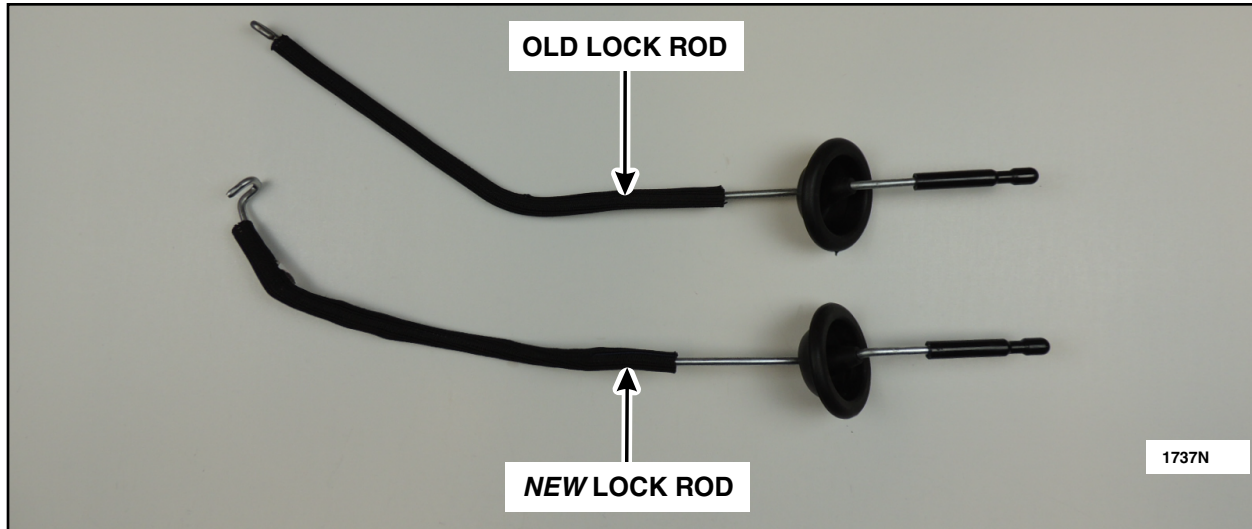



FIGURE 13

10. Install the door weather shields.
11. Install the rear door interior trim panels. Please follow the WSM procedures in Section 501-05.



Rear Door Lower Latch Water Shield Kit Installation (Super Cab only)

NOTE: To view a video demonstration of this repair procedure, click the video icon. 

Note: If the vehicle has previously had a rear lower door latch replaced, it may already have the latest level latch water shield installed. If the Super Cab rear lower door latch has a water shield installed as shown in Figure 17, then installation of a *new* water shield is not required.

NOTE: Procedure to be performed on both LH and RH sides.

1. Remove the rear door interior trim panels. Please follow the WSM procedures in Section 501-05.
2. Remove the door panel weather shield for access.
3. Inspect the interior door handle to latch cable for kinking. See Figure 15.
 - Correct any kinks found in the cable by straightening the cable by hand as required.
4. Remove the three lower door latch bolts. See Figure 14.

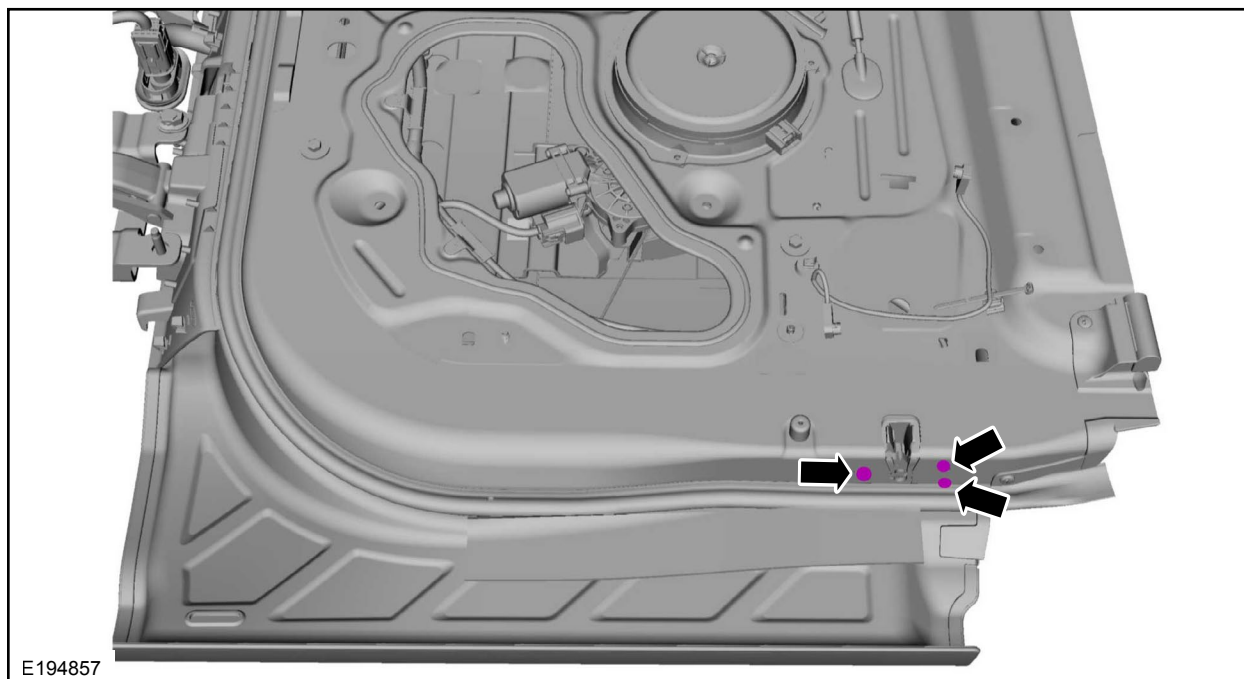


FIGURE 14



5. Detach the cable retainers and disconnect the electrical connector. Position the rear door latch outside of the door. See Figure 15.

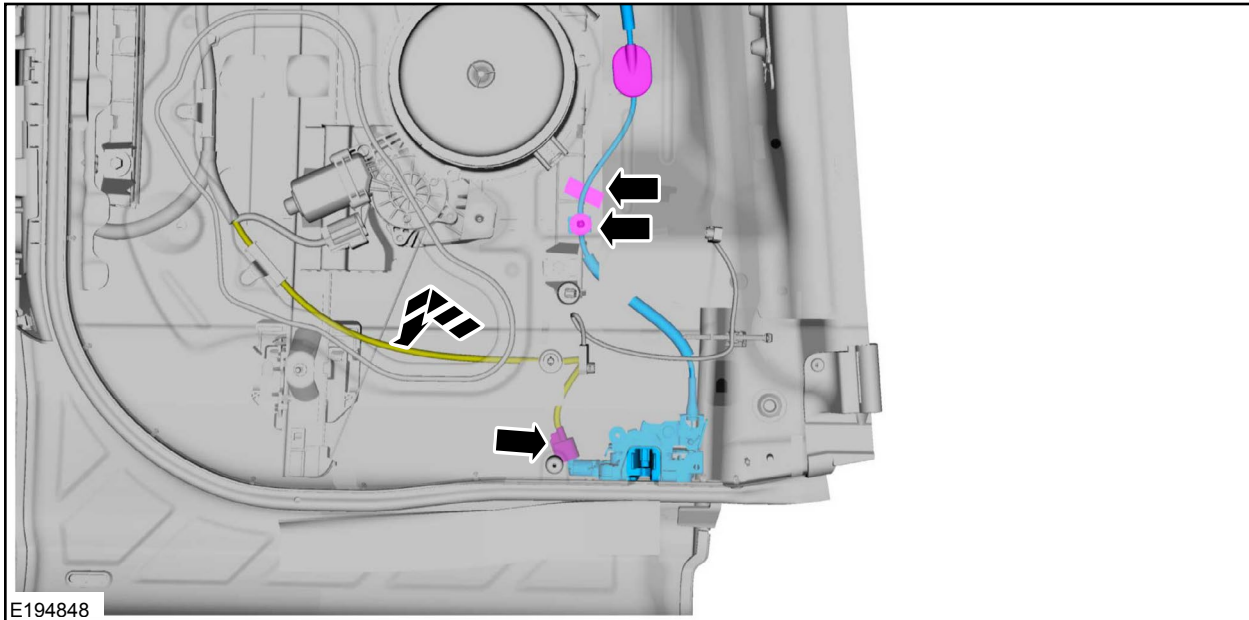


FIGURE 15

NOTE: Some F-150 SuperCab vehicles may be equipped with a smaller water shield than what is being installed in this safety recall. The smaller shields must be removed and replaced. See Figure 16.

6. If equipped, remove and discard the existing lower door latch water shields. See Figure 16.

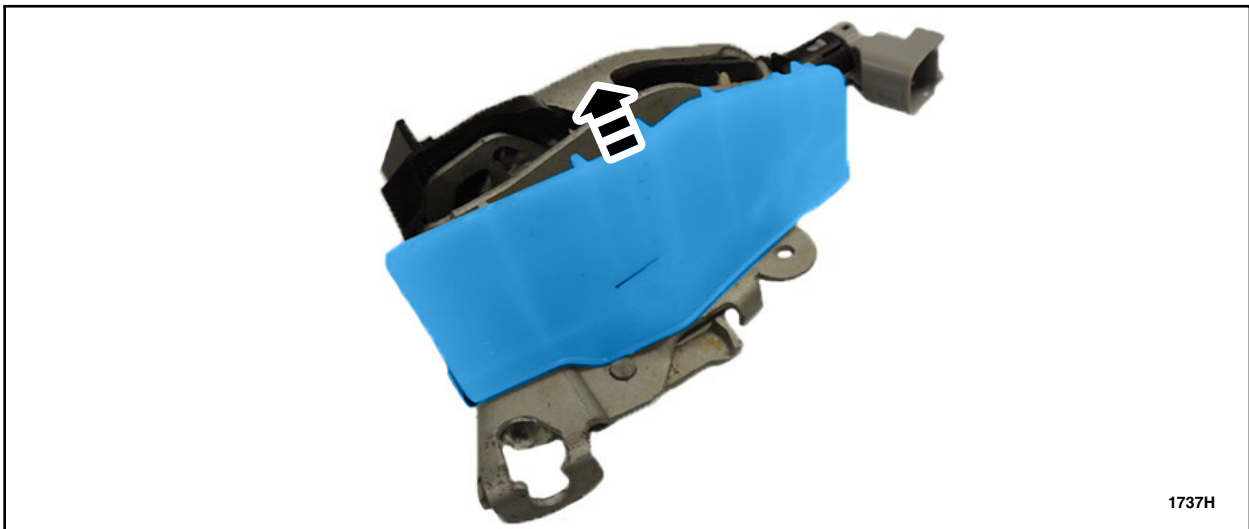


FIGURE 16



7. Using compressed air, blow out any debris or residual water from the latch assembly area.
8. Lubricate the door latch with Motorcraft® Multi-Purpose Grease or a quality equivalent white lithium grease spray.
 - Do not use penetrating oils on the latches.
9. Install a *new* door latch water shield onto the lower rear door latch. See Figure 17.

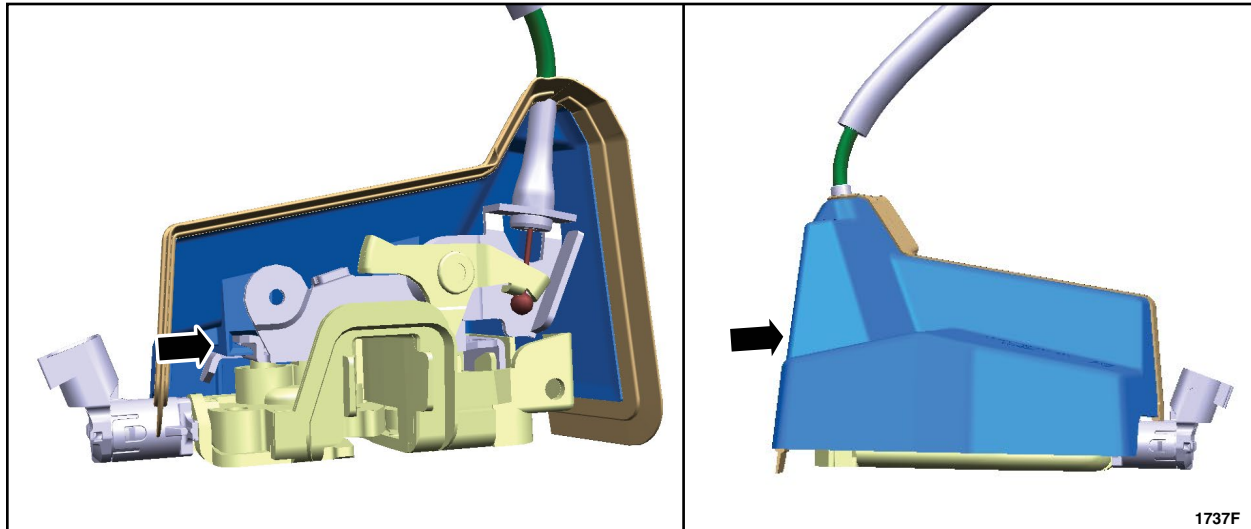


FIGURE 17

10. Position the rear door lower latch back into the door. Attach the cable retainers and connect the electrical connector. See Figure 15.
11. Install the three door latch bolts. See Figure 14.
 - 106 lb.in (12 Nm).
12. Install the door weather shields.
13. Install the rear door interior trim panels. Please follow the WSM procedures in Section 501-05.

