

CERTAIN 2016 MODEL YEAR FOCUS AND C-MAX VEHICLES — LEFT-HAND UNDERBODY APRON WELD INSPECTION AND REPAIR

OVERVIEW

In the affected vehicles, improper spot welds on the left-hand underbody apron assembly were repaired using rivets at the assembly plant, and the repair may not have been performed properly. Vehicles with an improperly repaired left-hand underbody apron assembly may have reduced front-end structural integrity, potentially increasing the risk of injury in a frontal crash. Before demonstrating or delivering any new in-stock vehicles involved in this recall, dealers are to inspect the repaired left-hand underbody apron assembly rivets for proper installation, and replace any improperly installed or missing rivets as necessary. This service must be performed on all affected vehicles at no charge to the vehicle owner.

INSPECTION PROCEDURE

1. Remove the retainers and the LH splash shield. See Figure 1.

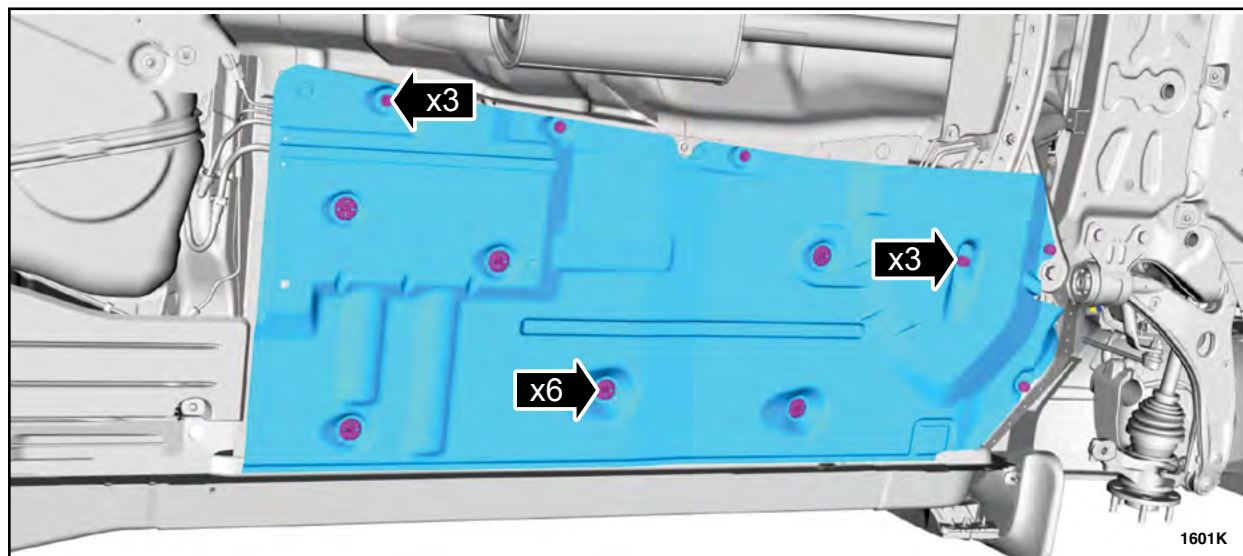


FIGURE 1



NOTE: Figure 2 shows a vehicle with ten (10) correctly applied factory spot welds. On the affected vehicles, these spot welds are inadequate or missing, and were replaced with rivets. Each spot weld location point must contain a rivet. See Figure 2.

2. Locate the rivets installed into the floor pan seam, under the vehicle behind the LH front tire. Inspect the rivets for proper installation. See Figures 2, 3a and 3b.
 - If the rivets are **installed and seated properly in each location**, no further action is required. See Figures 2, 3a and 3b.
 - If any of the rivets are **installed but seated improperly**, proceed to Repair Procedure on Page 3. See Figures 2, 3a, and 3b.
 - If a rivet is **not installed** in any of the ten (10) locations shown in Figure 2, install the correct rivet(s) as needed. Drill a hole in the appropriate location(s) using a suitable 17/64 in (6.75 mm) drill bit. Proceed to Repair Procedure, Step 6 on Page 5.

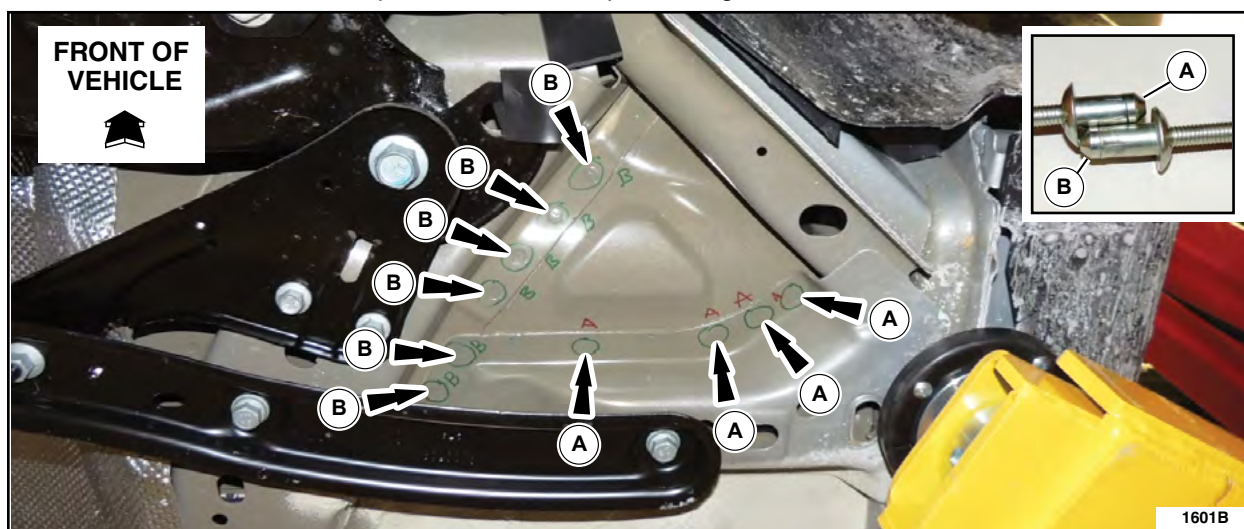


FIGURE 2

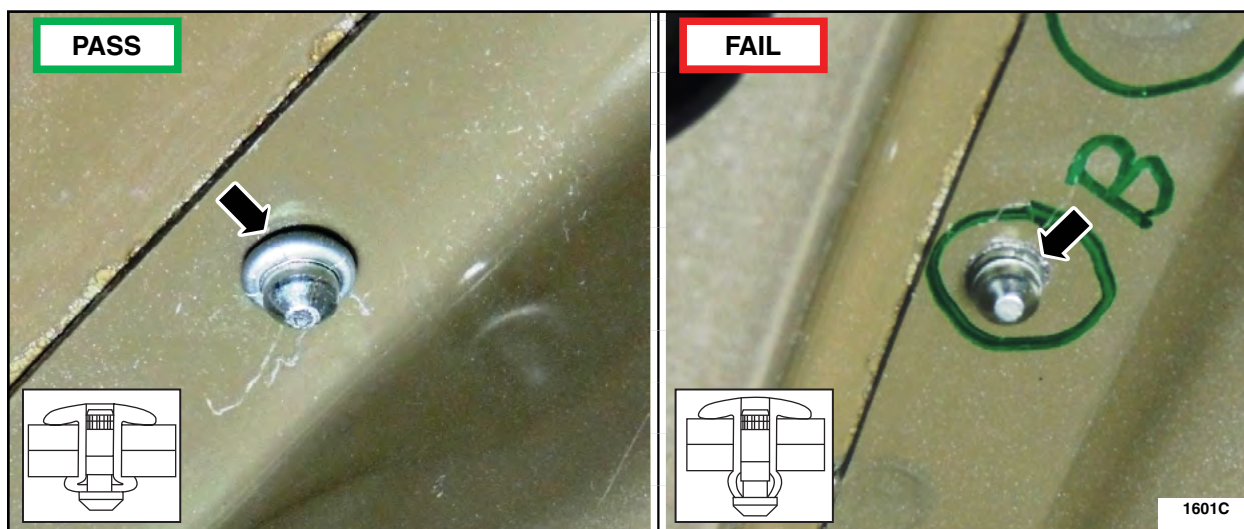


FIGURE 3a

FIGURE 3b



REPAIR PROCEDURE

1. Remove the hood latch release handle and the LH cowl trim panel. See Figure 4.
 - a. Position aside the front door weatherstrip and the driver door scuff plate.
 - b. Remove the hood latch release handle access cover.
 - c. Release the clips releasing the hood latch release handle and remove the hood latch release handle.

NOTE: Insert a 1/4 in (10 mm) drive socket to release the clips.

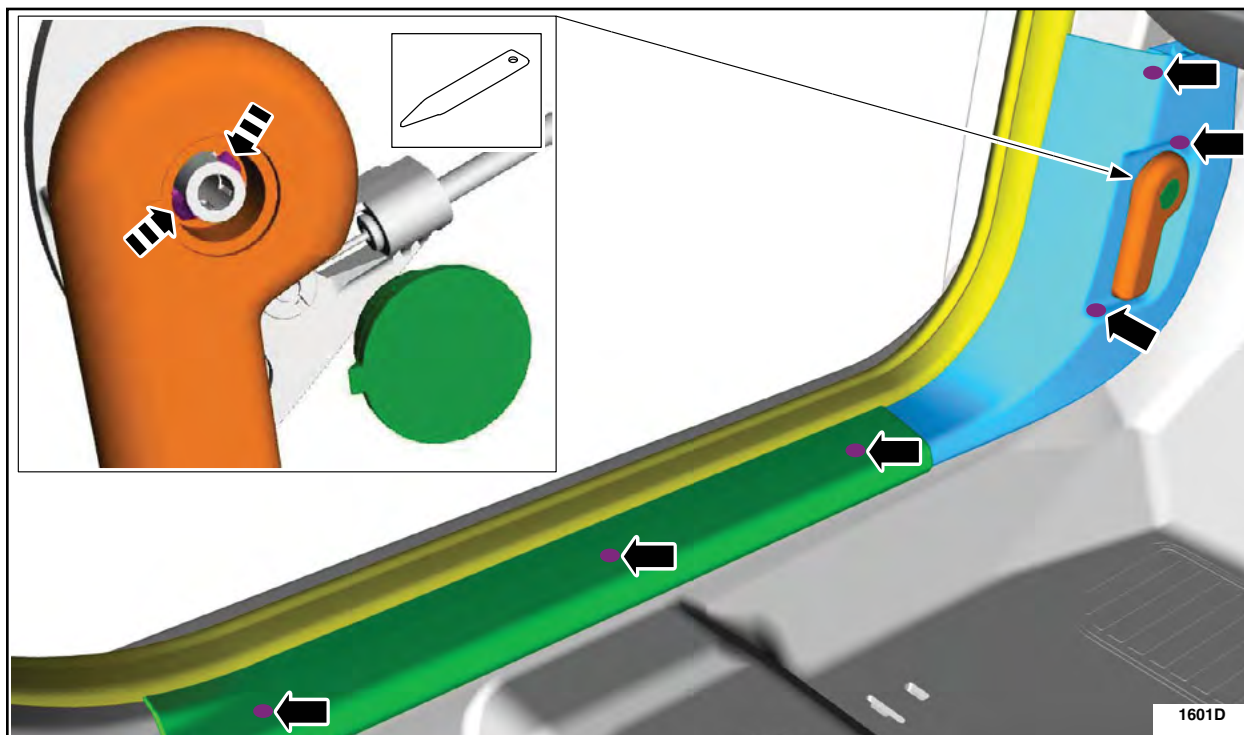


FIGURE 4



2. Remove the hood latch release. See Figure 5.

- a. Position aside the LH carpet and foam.
- b. Release the routing cable clips, remove the retainers and the hood latch release.

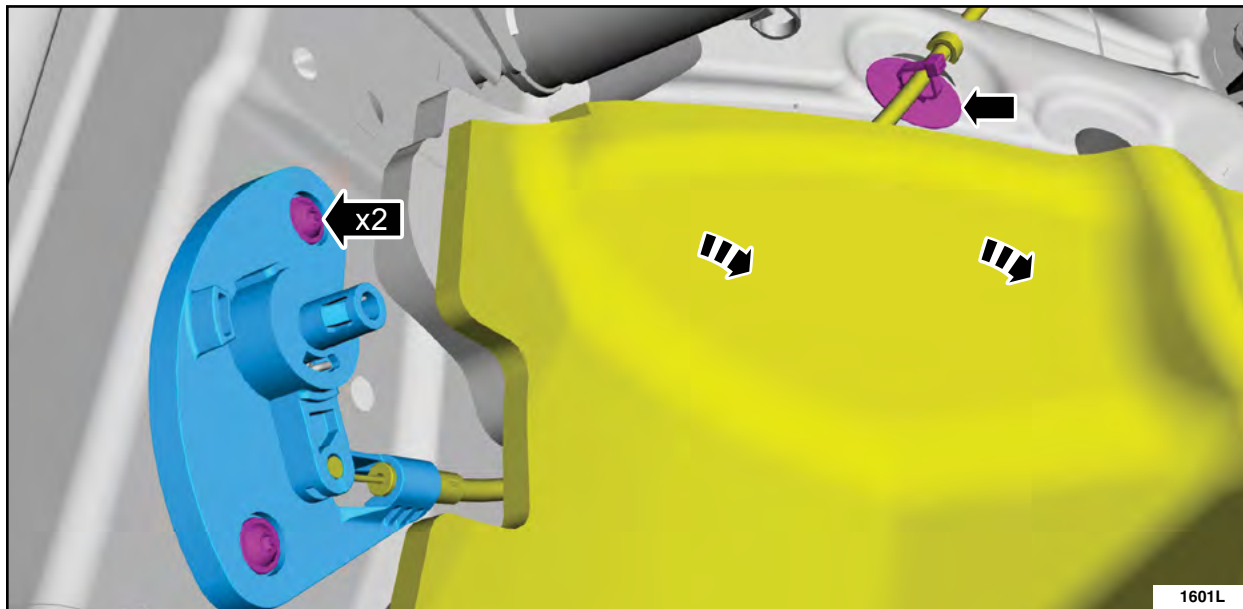


FIGURE 5

NOTE: Steps 3 and 4 are only required if replacing the rear most "B" rivet. See Figure 2.

3. Remove the retainers and the RH splash shield. See Figure 1.

NOTE: LH shown, RH similar.

4. Remove the two nuts and four bolts, then remove the crossbrace. See Figure 6.

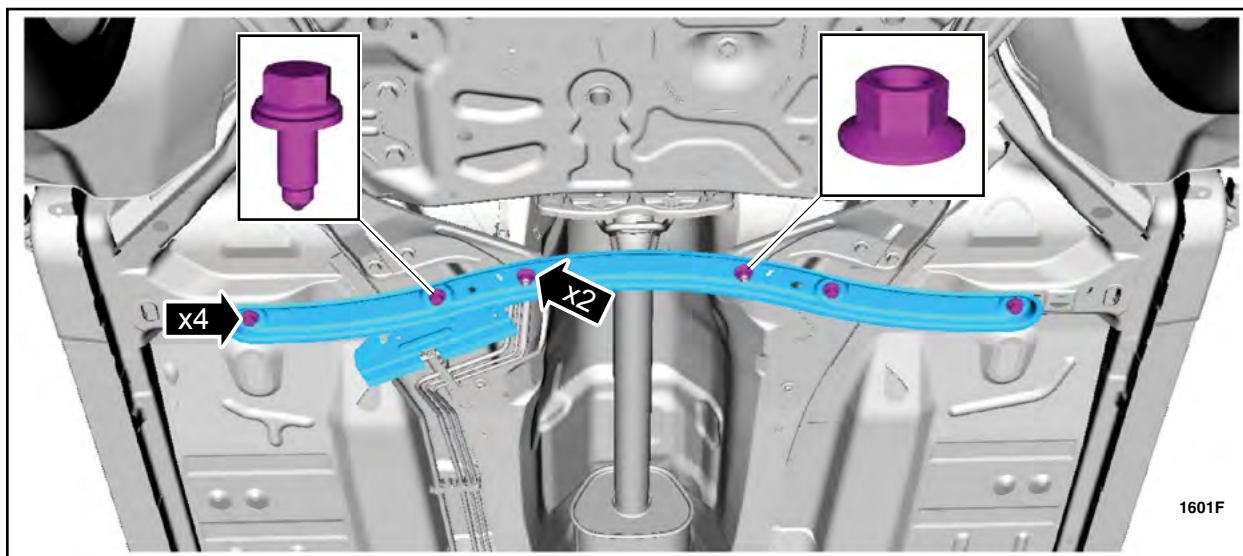


FIGURE 6



5. Remove any rivets that were improperly installed, using a suitable 17/64 in (6.75 mm) drill bit.

6. Vacuum all metal shavings from the floor.

NOTE: When installing rivets ensure that they are aligned straight through the drilled hole and fully seated against the floor. Inspect all rivets again after installing to ensure they compressed properly when installed. See Figure 3a.

NOTE: It is recommended to use a low-profile, pneumatic rivet gun when installing *new* rivets.

7. Install the rivets using a suitable rivet gun, from inside the vehicle. See Figure 7.

- If replacing rivets at "A" locations, install a short "A" rivet. See Figure 2.
- If replacing rivets at "B" locations, install a longer "B" rivet. See Figure 2.

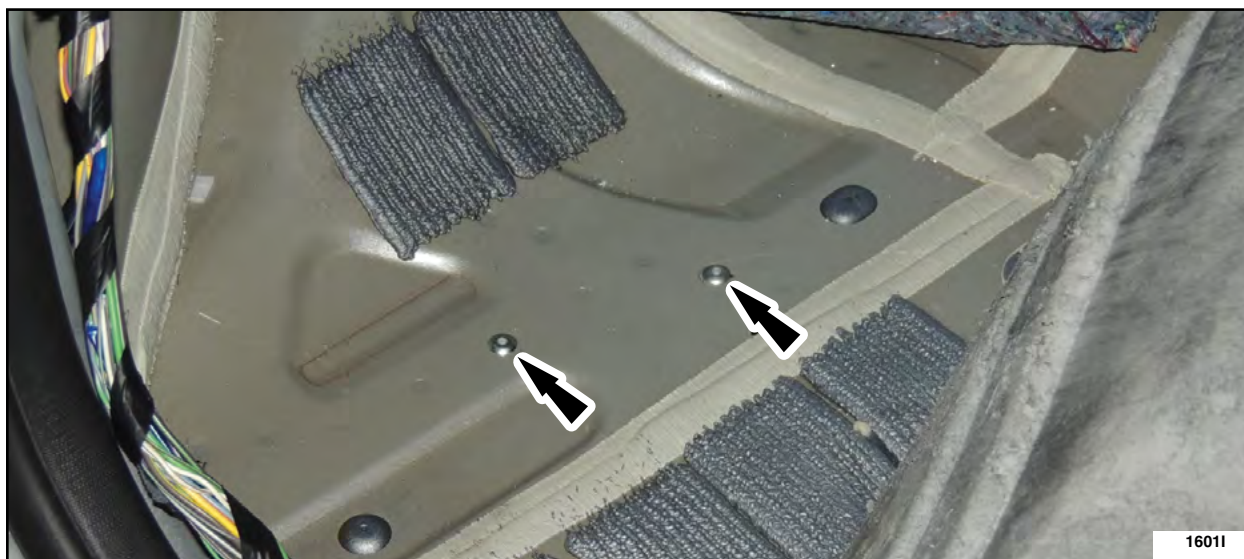


FIGURE 7



8. Seal the underbody seam and rivets using Kent® Leak Check Water Leak Sealer P50087 (or equivalent). See Figure 8.



FIGURE 8

9. If removed, install the crossbrace, four bolts, and two nuts. See Figure 6.
- Torque: 35 lb.ft (47 Nm).
10. Install both RH and LH splash shields and the retainers. See Figure 1.
11. Install the hood latch release. See Figure 5.
- Attach the routing cable clips, retainers, and the hood latch release.
 - Reposition back the LH carpet and foam.
12. Install the hood latch release handle and the LH cowl trim panel. See Figure 4.
- Attach the clips to attach the hood latch release handle and install the hood latch release handle.
 - Install the hood latch release handle access cover.
 - Reposition the front door weatherstrip and the driver door scuff plate.

