

CERTAIN 2017 MODEL YEAR F-SUPER DUTY VEHICLES — FRAME CROSSMEMBER REINFORCEMENT BRACKET INSPECTION

OVERVIEW

In some of the affected vehicles, a frame crossmember reinforcement bracket at the attachment of the front fuel tank strap may be missing, which is required for long-term durability. Over time, a missing frame crossmember reinforcement bracket may lead to the fuel tank strap separating from the frame, resulting in the fuel tank moving out of position and potentially contacting the ground, increasing the risk of a fuel leak. A fuel leak in the presence of an ignition source may increase the risk of a fire. Dealers are to inspect for the presence of the frame crossmember reinforcement bracket. If the frame crossmember reinforcement bracket is missing, dealers will install a new frame crossmember reinforcement bracket.

SERVICE PROCEDURE

1. With the vehicle in NEUTRAL, position it on a hoist. Please follow the procedures in Workshop Manual (WSM) Section 100-02.
2. Inspect the number three crossmember for the presence of a frame crossmember reinforcement bracket located inside the LH frame rail near the front fuel tank strap. See Figures 1 and 2.
 - If a frame crossmember reinforcement bracket **is** present, no action is necessary.
 - If a frame crossmember reinforcement bracket **is not** present, proceed to Step 3.

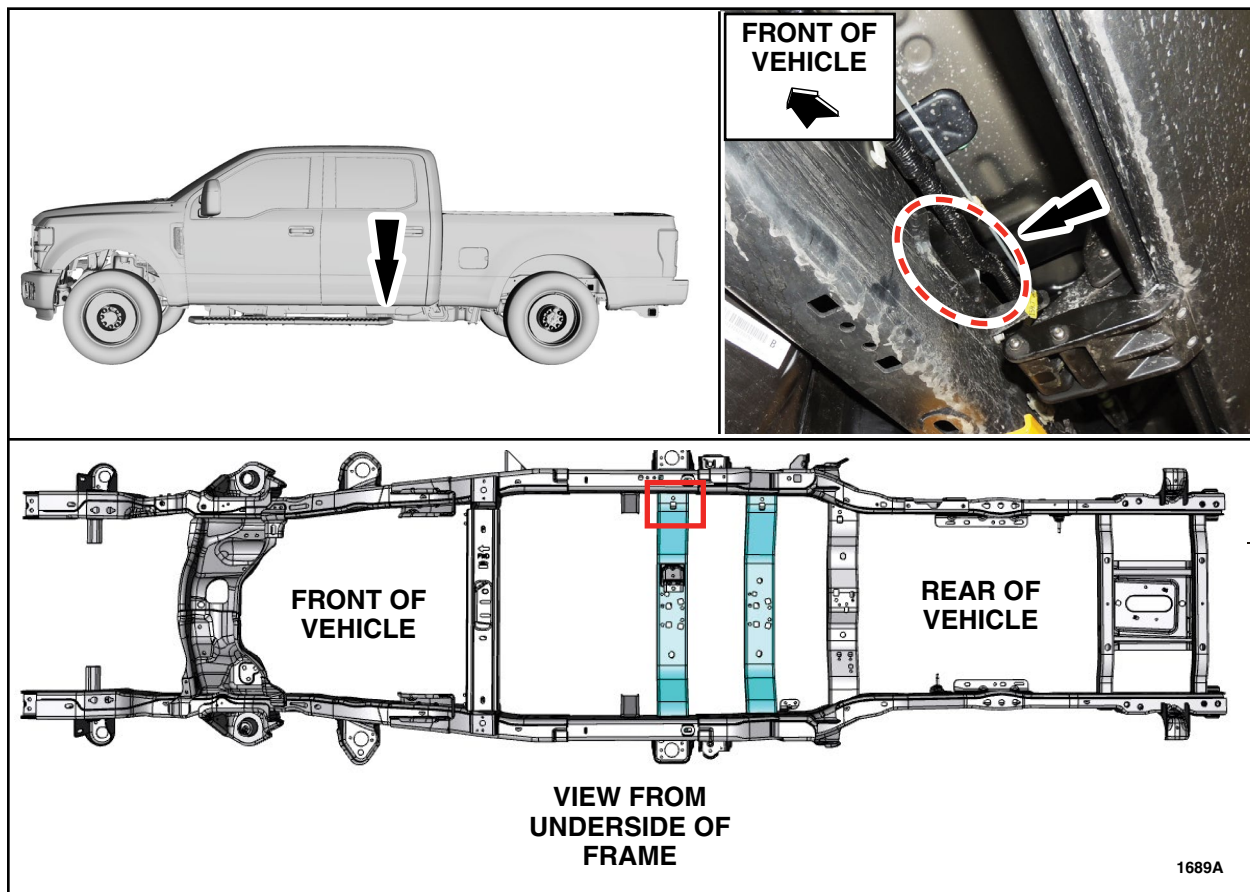


FIGURE 1



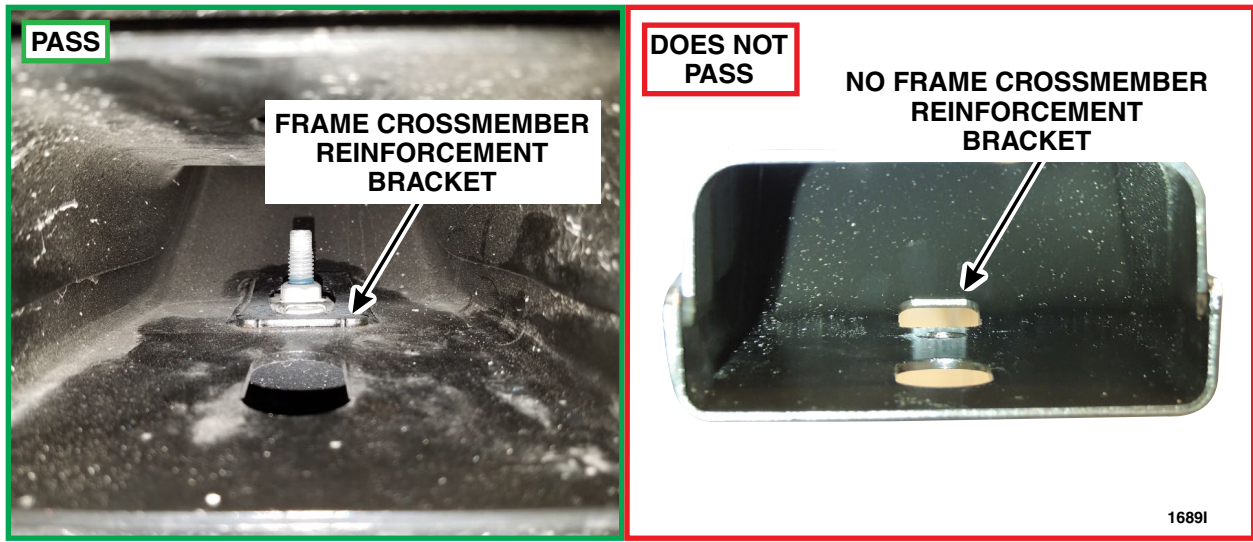


FIGURE 2

3. If equipped, remove the three skid plate bracket to crossmember bolts and the three skid plate bracket to frame rail bolts. With the help of an assistant, remove the skid plate. See Figure 3.

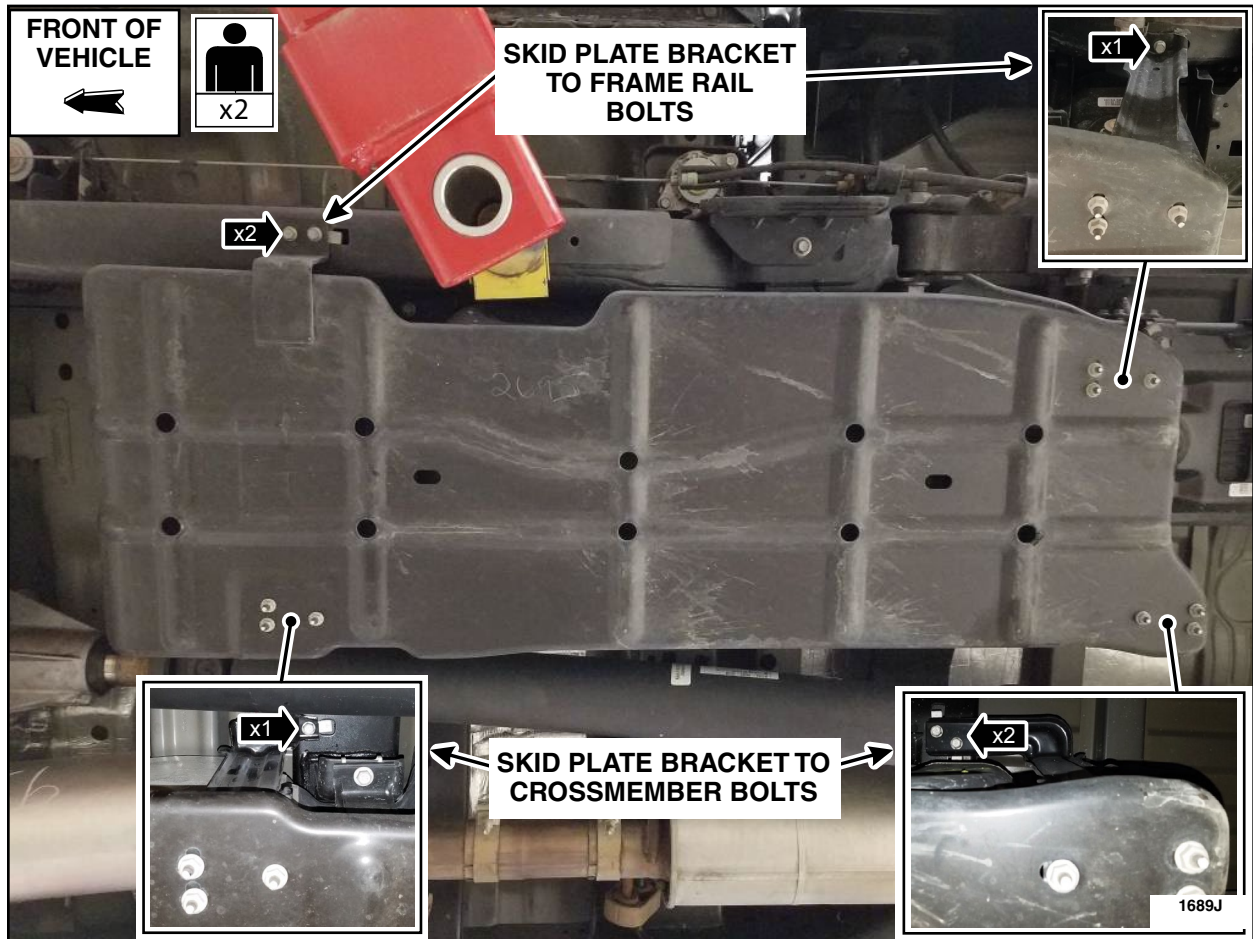


FIGURE 3



4. Position a jack stand under the fuel tank.
5. Remove and discard the outboard front fuel tank strap bolt. Position the fuel tank strap aside to gain access to the J-clip. See Figures 4 and 5.

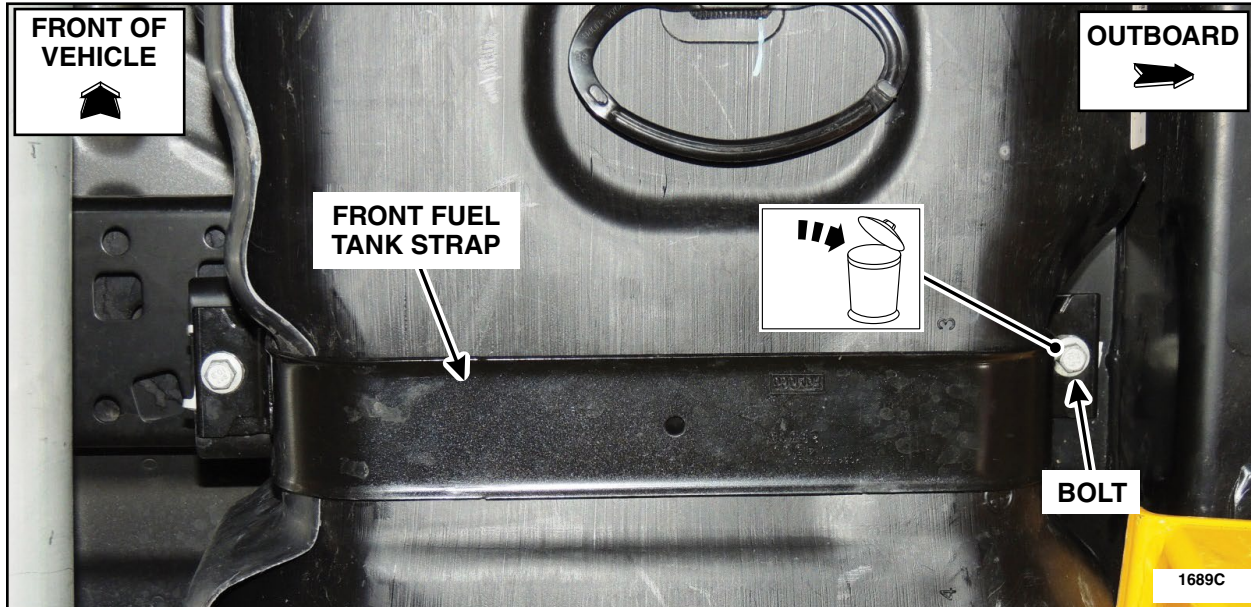


FIGURE 4

6. Remove the fuel tank strap J-clip. See Figure 5.



FIGURE 5



7. Prepare for frame crossmember reinforcement bracket installation. See Figure 6.

- a. Clean the inside of the crossmember with soap and water.
- b. Clean the inside of the crossmember with Motorcraft® Brake Parts Cleaner PM-4-A and allow the surface to dry.

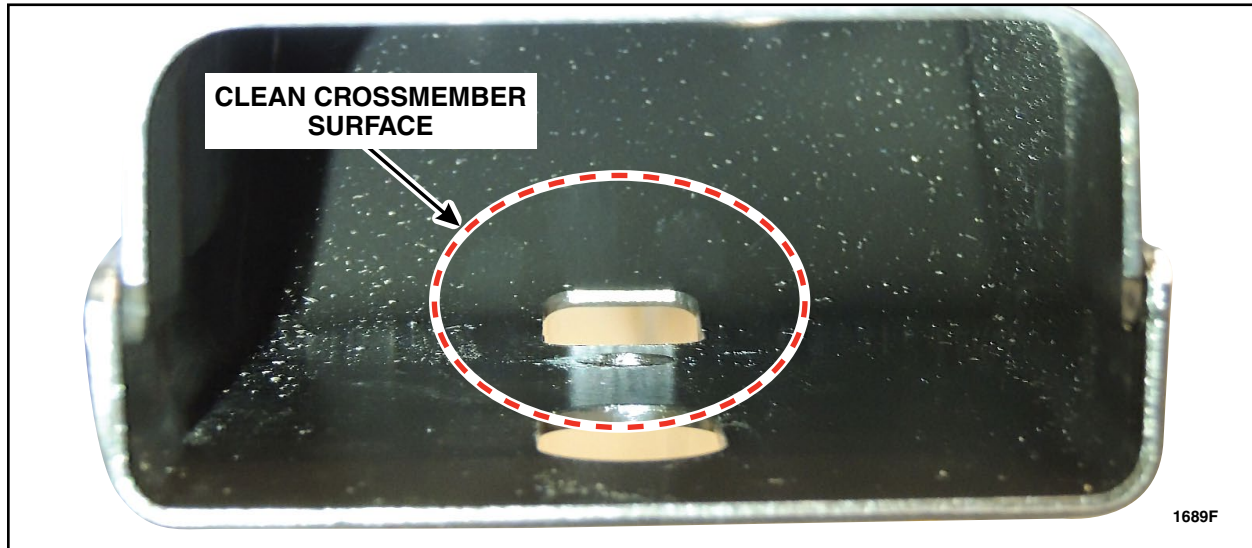


FIGURE 6

8. Apply Motorcraft® TA-1 adhesive to the **bottom** of the *new* frame crossmember reinforcement bracket. See Figure 7.

NOTE: A part number is stamped on the top surface of the frame crossmember reinforcement bracket. Apply adhesive to the surface that has **NO** part number markings. See Figure 8.

NOTE: Spread adhesive evenly to ensure all gaps between the frame crossmember reinforcement bracket and the crossmember will be filled. Adhesive should squeeze out from all edges when the bolt is tightened.

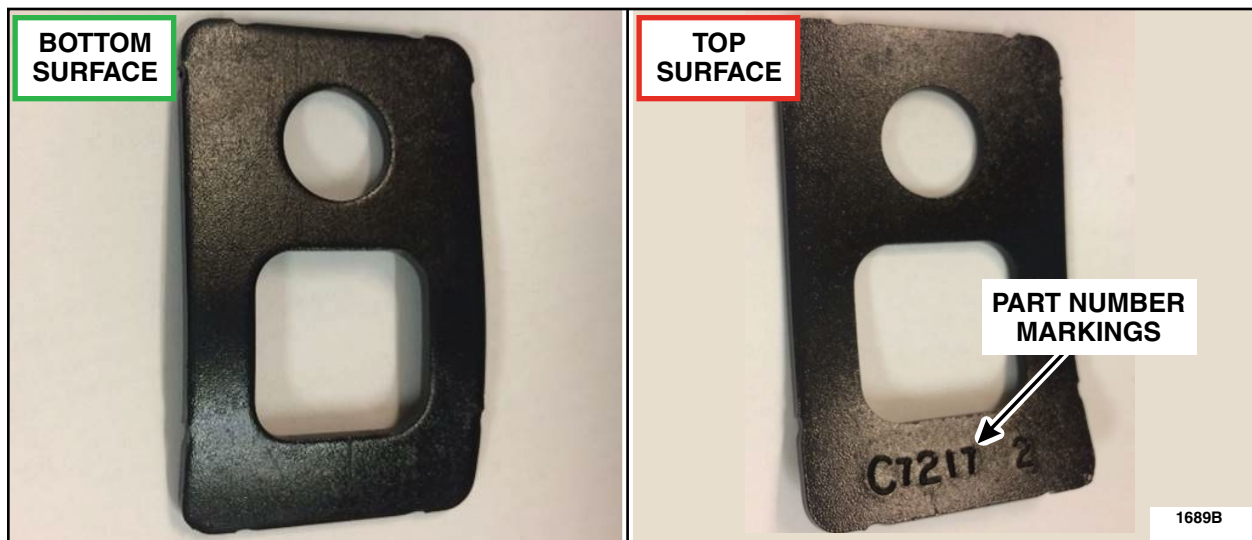


FIGURE 7



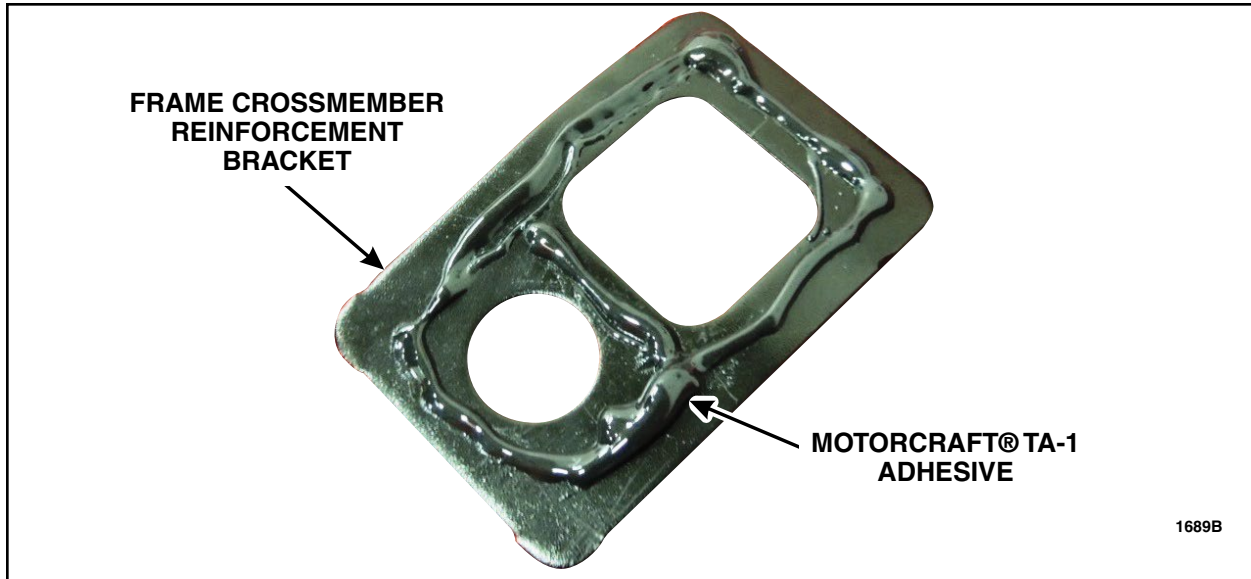


FIGURE 8

9. Install the frame crossmember reinforcement bracket to the crossmember.

- Align the round and square holes in the frame crossmember reinforcement bracket with the corresponding holes in the crossmember.
- When properly aligned, the square hole and reinforcement will overlap slightly.
See Figure 9.

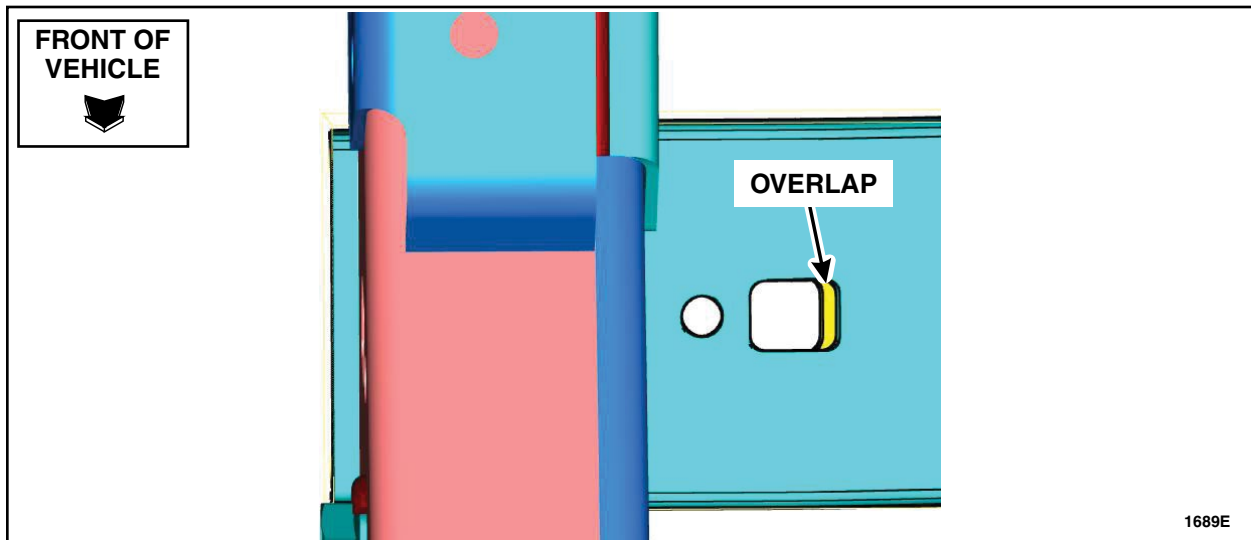


FIGURE 9



11. Reinstall the J-clip. See Figure 5.
12. Install the front fuel tank strap and install a *new* outboard front fuel tank strap bolt. See Figure 4.
 - Tighten bolts to 30 lb.ft (40 Nm).
13. Remove the jack stand from under the fuel tank.
14. If equipped, install the skid plate. See Figure 3.
 - Non 176" (447 cm) wheel base vehicles - Tighten all bolts to 18 lb.ft (25 Nm).
 - 176" (447 cm) wheel base vehicles - Tighten the two front skid plate to frame rail bolts to 59 lb.ft (80 Nm). Tighten the rear skid plate to frame rail and skid plate to crossmember bolts to 18 lb.ft (25 Nm).

