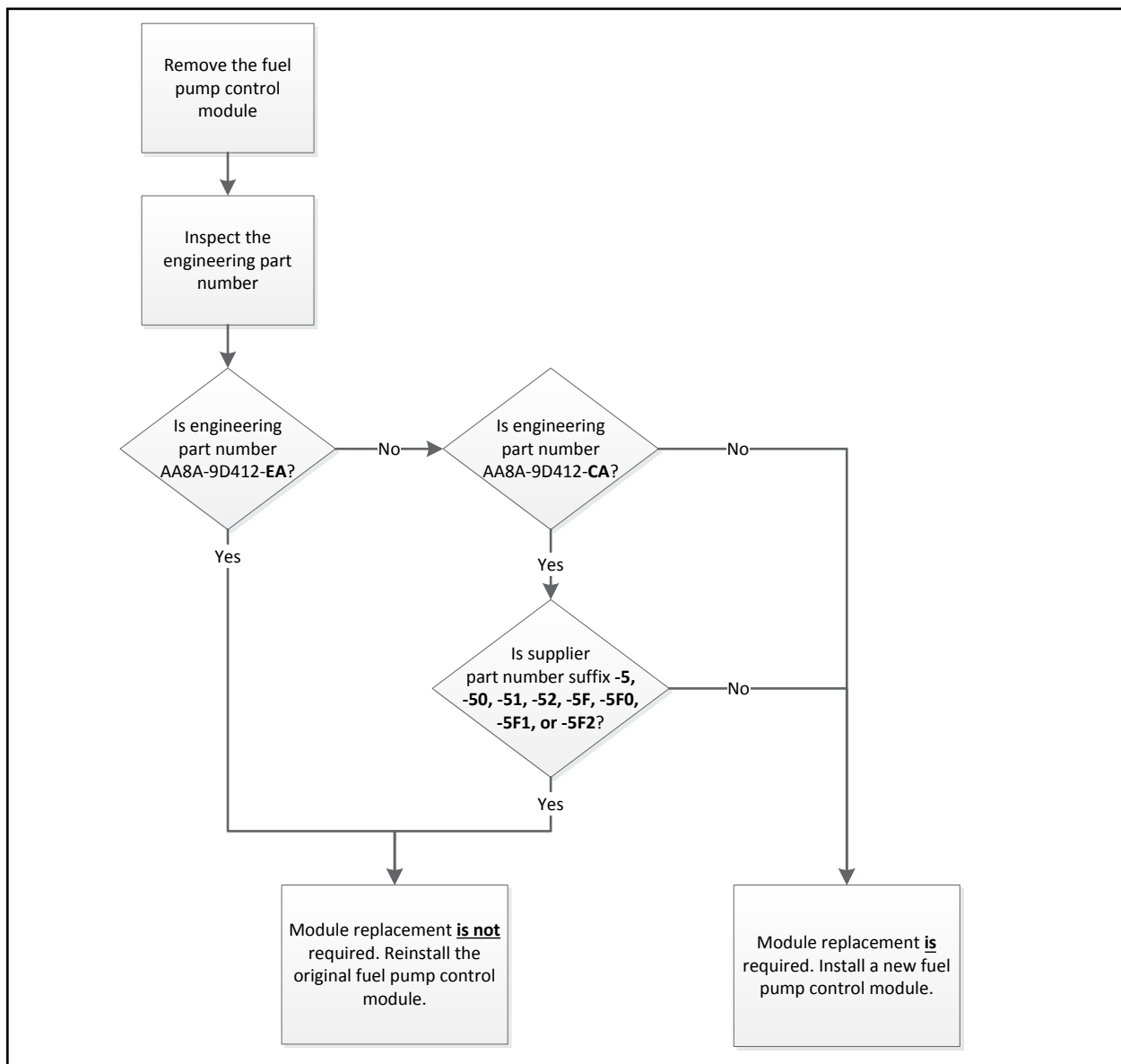


## CERTAIN 2013-2015 MODEL YEAR FLEX, MKS, MKT, TAURUS AND POLICE INTERCEPTOR SEDAN VEHICLES — FUEL PUMP CONTROL MODULE INSPECTION AND REPAIR

### OVERVIEW

In some of the affected vehicles, the fuel pump control module may fail, resulting in service engine soon indicator illumination accompanied by the engine not starting or engine stalling. In some cases, the engine may stall while driving without warning or the ability to restart, increasing the risk of a crash. Before demonstrating or delivering any new in-stock vehicles involved in this recall, dealers are to inspect the fuel pump control module and replace it as needed.

### NEW ! SERVICE PROCEDURE



1. Remove the fuel pump control module. Please follow the Workshop Manual (WSM) procedures in Section 303-04.
2. Inspect the engineering part number and, if necessary, the supplier part number suffix on the fuel pump control module. See Figure 1.
  - If either (A) the engineering part number is AA8A-9D412-EA, OR (B) the engineering part number is AA8A-9D412-CA and the supplier part number suffix is -5, -50, -51, -52, -5F, -5F0, -5F1, or -5F2, module replacement is not required. Reinstall the original fuel pump control module. Please follow the WSM procedures in Section 303-04. No additional service is required.
  - If the module does not meet either criteria, proceed to Step 3.
3. *Install a new fuel pump control module. Please follow the WSM procedures in Section 303-04.*

**NOTE:** *For Flex and MKT, ensure the replacement module meets the above criteria.*



ENGINEERING PART NUMBER AA8A-9D412-EA	ENGINEERING PART NUMBER AA8A-9D412-CA
<ul style="list-style-type: none"> <li>• ALL PARTS OK TO USE</li> </ul>	<ul style="list-style-type: none"> <li>• SUPPLIER SUFFIX -5, -50, -51, -52, -5F, -5F0, -5F1, -5F2 ARE OK TO USE</li> </ul>
	

FIGURE 1

