

CERTAIN 2005-2009 MUSTANG VEHICLES — PASSENGER AIRBAG INFLATOR REPLACEMENT

OVERVIEW

Takata has determined that the propellant wafers in some airbag inflators may experience an alteration over time, which could potentially lead to an over-aggressive combustion in the event of a crash that requires airbag deployment. This potential condition could create excessive internal pressure when the airbag is deployed, which could result in the body of the inflator rupturing upon deployment increasing the risk of injury to occupants.

Dealers are to replace the passenger airbag inflator. The serial number from the new airbag inflator must be recorded on the repair order. Place the replaced inflator into the packaging from the new part and provide to the appropriate dealership personnel for part returns.

NOTE: For vehicles that the airbags have deployed or that have other modifications preventing the recall repair from being completed, submit a VIN specific request to the SSSC Web Contact Site prior to attempting a repair. Attach pictures of the vehicles airbag modules to the request.

SERVICE PROCEDURE

Recommended Tools:


1/4" Drive Deep Socket - 7mm
1/4" Drive Ratchet
1/4" Drive Extension - 6" (152mm)
1/4" Drive Shallow Socket - 8mm
1/4" Drive Impact Driver
1/4" Drive Torque Wrench
Side Cutters
Utility Knife
Needle Nose Pliers
Pocket Screwdriver



AIRBAG INFLATOR REPLACEMENT


NOTE: The following repair instructions only apply to 2005-2009 Mustang vehicles. Repair instructions will be published in separate attachments for the other vehicle lines included in this recall as parts become available for those vehicles.

NOTE: The parts used in this safety recall may physically appear to be identical, but they have differing operating characteristics. It is crucial that parts are not interchanged or substituted.

 **WARNING:** Failure to follow the instructions and warnings in the Workshop Manual (WSM) may result in injury.

NOTE: If the Airbag Readiness light indicates no Supplemental Restraint System (SRS) faults are present, it is not necessary to follow the WSM SRS Depowering and Repowering steps. Turn the ignition to OFF and wait 1 minute, then it is safe to proceed with airbag inflator replacement.

NOTE: The ignition must remain OFF until this service procedure is completed.

NOTE: To view a video demonstration of this repair procedure, click the video icon. 



1. Remove the passenger airbag from the vehicle. Please follow the WSM procedures in Section 501-20B.
2. Set the airbag face down onto a surface that will not scratch or damage the airbag face.
3. Remove the wiring harness connector retainer from the passenger airbag assembly. See Figure 1.

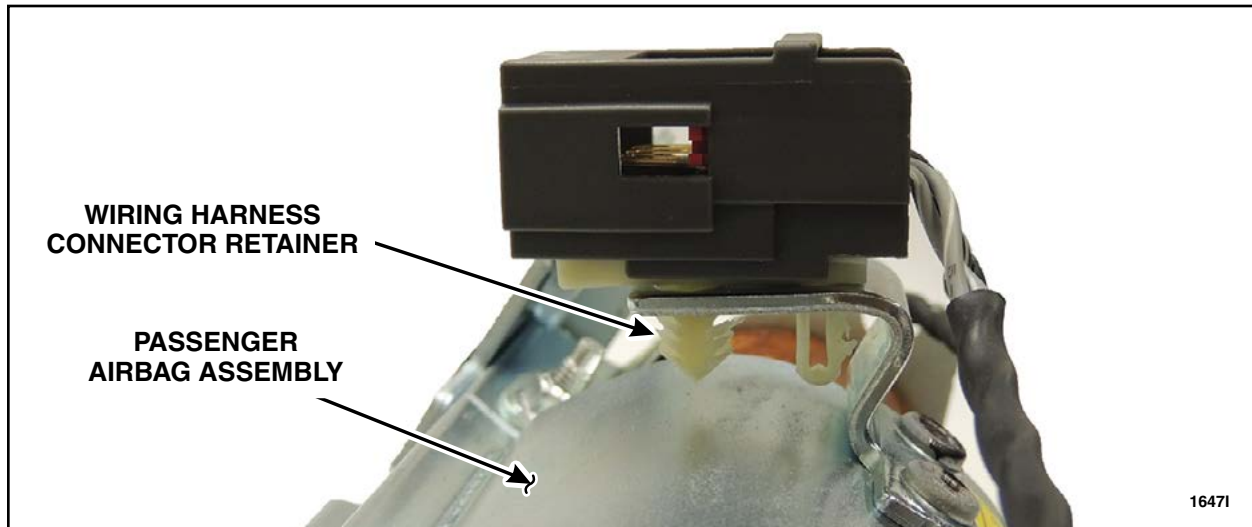


FIGURE 1

NOTE: Carry out this step on the longer wire on the end opposite of the airbag inflator retaining bracket. See Figure 2.

4. Remove approximately 100 mm (3.93 in) of the conduit from the passenger airbag assembly wire harness. See Figure 2.

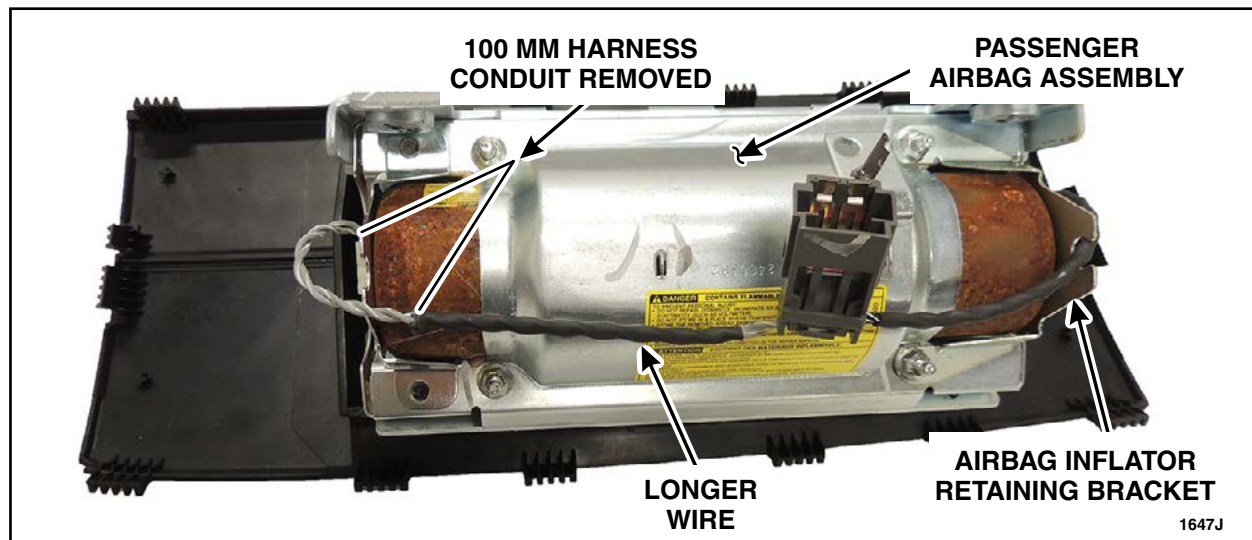


FIGURE 2



5. Position the shorting clip onto the harness wires, and crimp the shorting clip together one side at a time using pliers. See Figure 3.

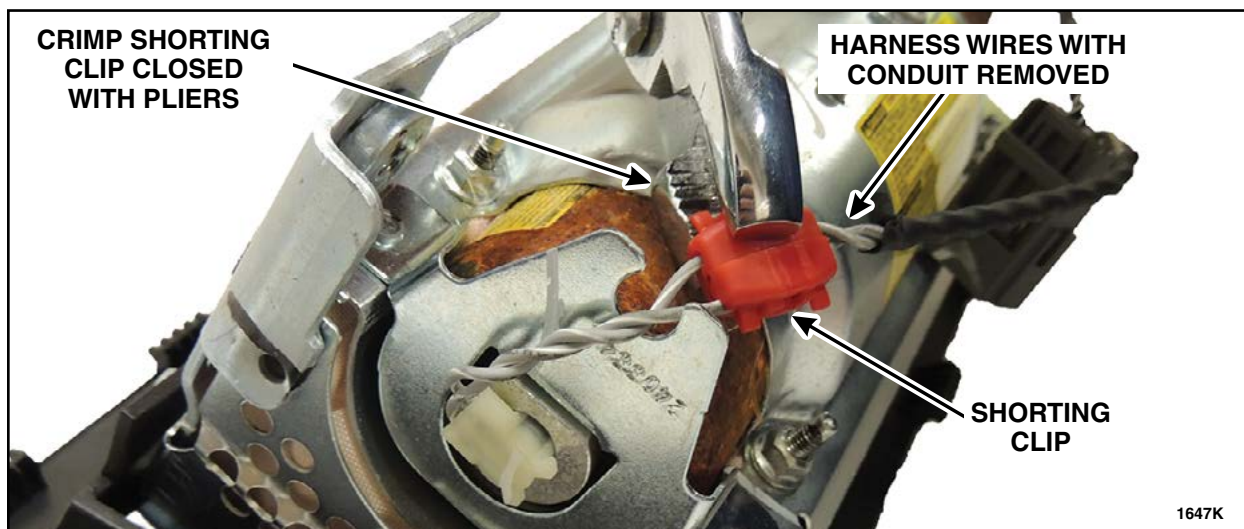


FIGURE 3

6. Cut the harness wires between the shorting clip and the harness connector. See Figure 4.

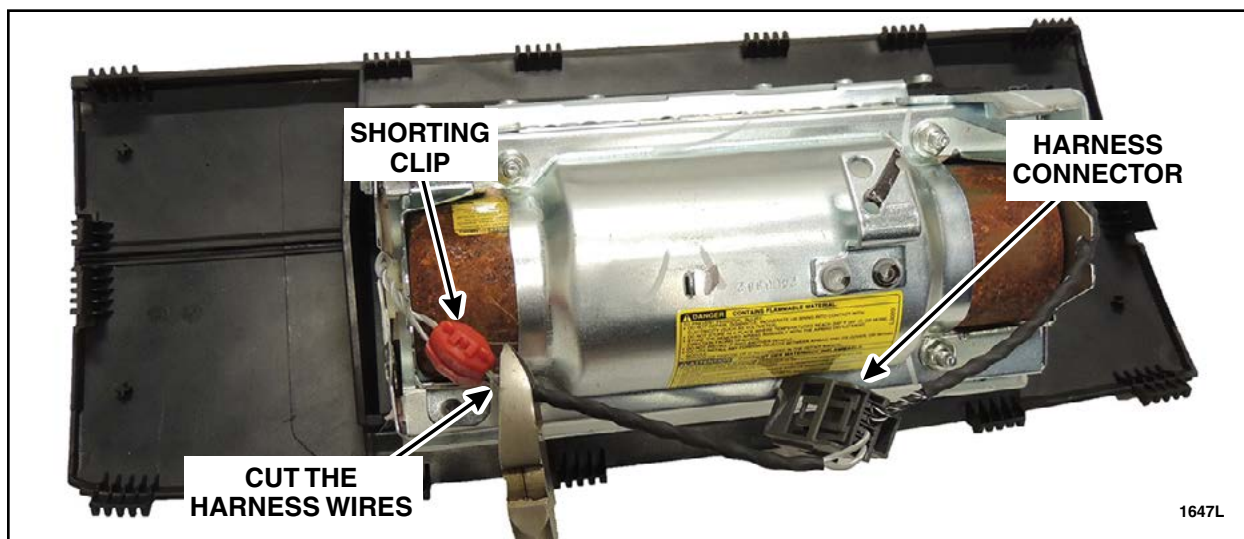


FIGURE 4



7. Remove and discard the four passenger airbag inflator retaining bracket nuts and the retaining bracket. See Figure 5.

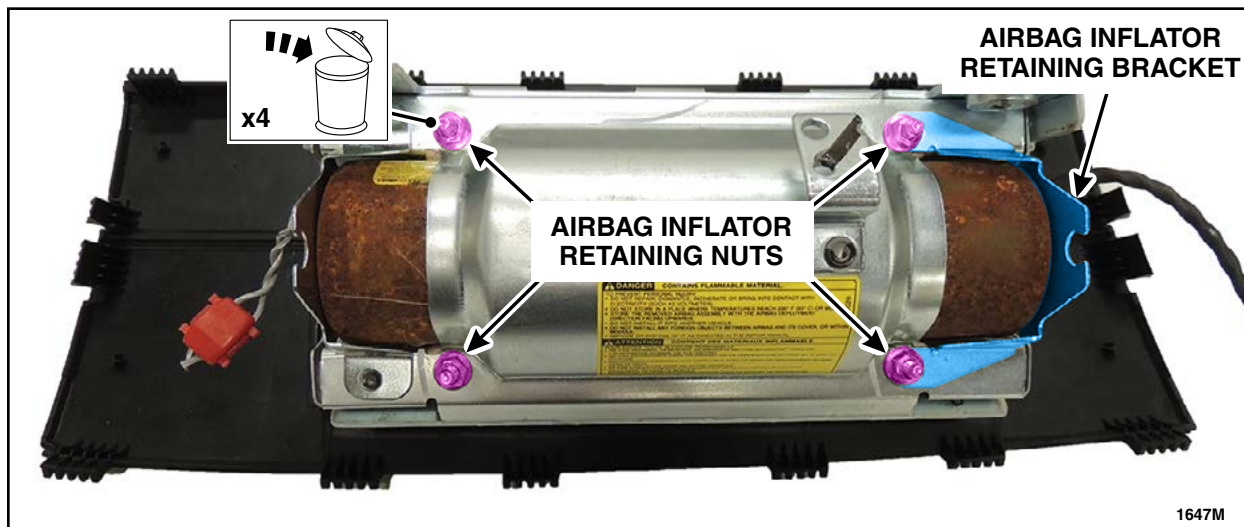


FIGURE 5

⚠ WARNING: Do not allow any debris on or around the airbag once the inflator is removed.

8. With an assistant holding the passenger airbag assembly, remove the inflator from the assembly by pushing outward on the inflator. Set the airbag inflator aside for return shipping. See Figure 6.
- If required, use of a brass punch is permitted (only at the location shown) to free the inflator from its mounted position.



FIGURE 6



NOTE: The serial number of the new airbag inflator must be provided to Ford for the warranty claim to be processed.

9. Record the 11 character serial number of the *new* airbag inflator on the repair order. See Figure 7.



FIGURE 7



10. **NOTE:** Both *new* inflator end caps are specific to their respective end of the inflator and must be fully seated.

NOTE: The tail end cap does not have an alignment tab and may be installed in any orientation. Make sure the tail end cap is fully seated or you will not be able to install the inflator retaining bracket.

Install both *new* inflator end caps making sure the alignment feature on the cap nearest the inflator retaining bracket is properly oriented. See Figure 8.

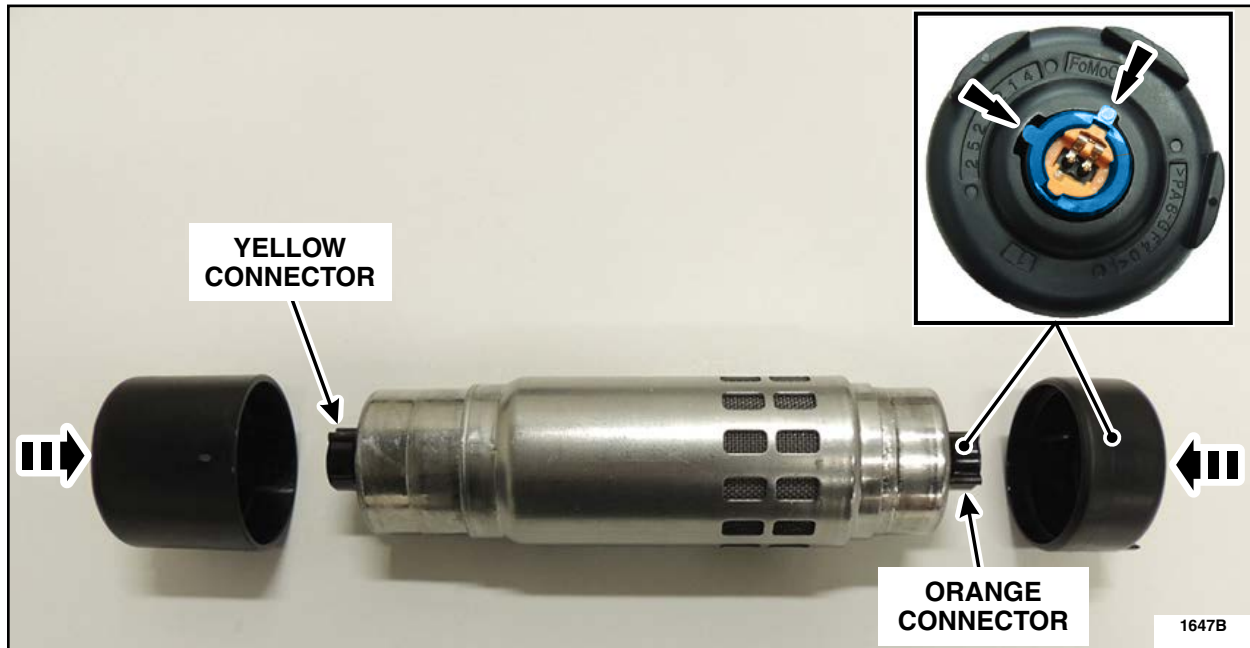


FIGURE 8

11. Install the inflator into the passenger airbag assembly with the orange connector end facing out. Align the three tabs on the cap nearest the inflator retaining bracket with the airbag module lower channel (facing down). See Figure 9.

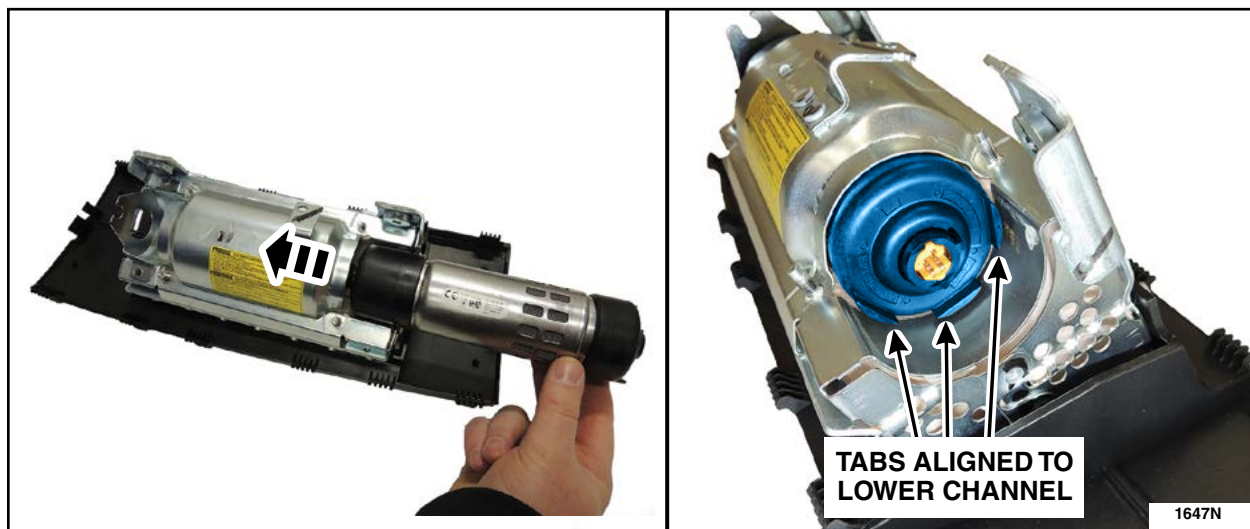


FIGURE 9



12. Install the *new* passenger airbag inflator retaining bracket and *new* nuts. See Figure 10.

- Torque the new retaining nuts in the sequence shown below to 4 Nm (35lb.in).



FIGURE 10

13. Align the T-shape index on both the wiring harness electrical connector and the airbag inflator. Install the *new* wiring harness onto the passenger airbag module and connect to both sides of the inflator. See Figure 11.



FIGURE 11

14. Insert the inflator wiring harness connector tabs. See Figure 12.

NOTE: Pull gently on the wiring harness to ensure it is properly seated.

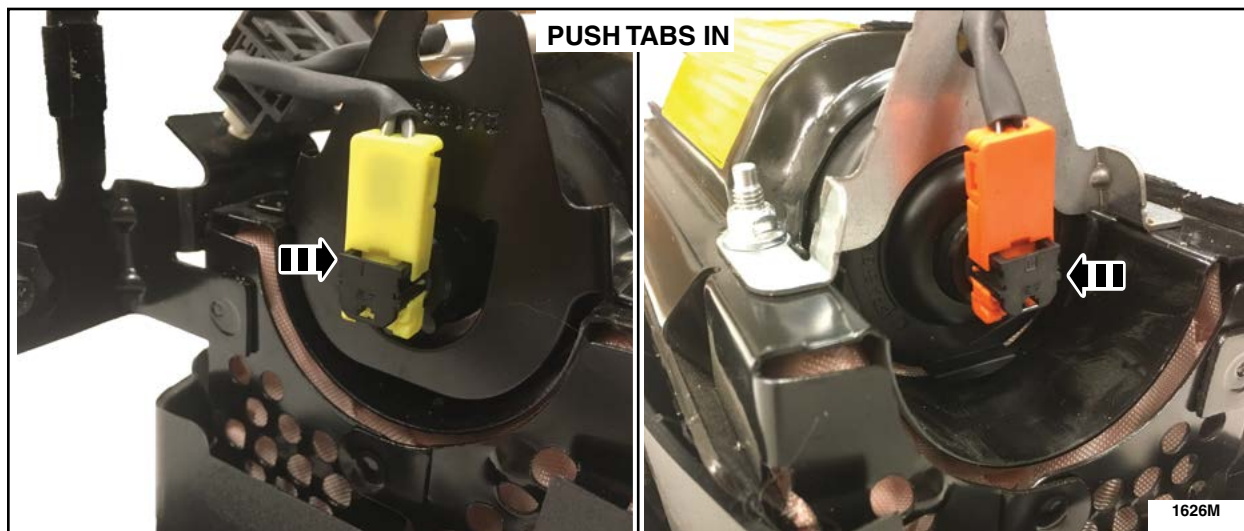


FIGURE 12

15. Re-install the passenger airbag. Please follow WSM procedures in Section 501-20B.

16. Package the replaced inflator in the *new* part box and provide to the appropriate dealership personnel for part returns.

