

## OM642 DPF Filter Cracked or Broken

---

Topic number	LI49.10-N-080528
Version	1
Function group	49.10 - Exhaust pipes, mufflers
Date	6/3/26
Validity	906 with OM642 engine
Reason for change	

---

### Complaint

Vehicle will not start or exhibits noisy exhaust. Check Engine Lamp (CEL) is on. Multiple control unit communication and system faults may be present, including but not limited to: 134800, 134900, 11B300, 11EC00, 15E100, 155700, 162500.

Additional events codes may include: 134300, 102200, 163400, 16CE00.

In many cases, multiple unrelated faults are stored due to electrical disruption from wiring damage rather than individual component failure.

### Cause

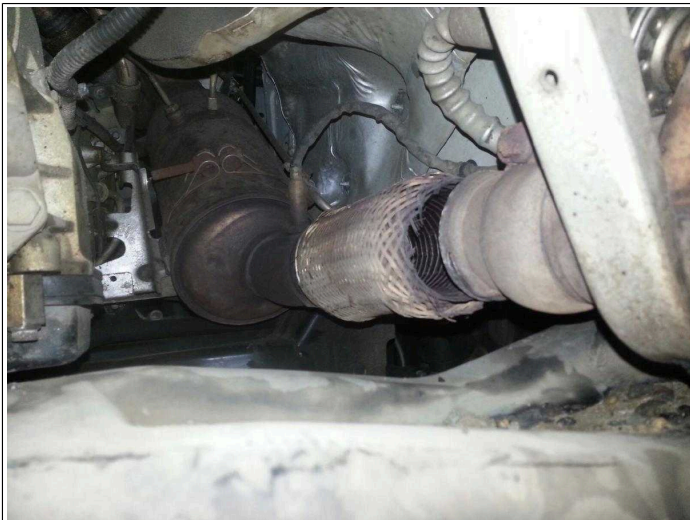
The DPF filter is cracked, broken, or leaking, allowing hot exhaust gas to escape from the exhaust system.

Depending on the location of the break or leak, hot exhaust gas may be directed toward the main wiring harness and/or the SCR (Selective Catalytic Reduction) dosing valve assembly. This heat exposure can result in:

- Internal melting of wiring insulation within the harness
- Short to ground conditions and loss of communication between control units
- Damage to the dosing valve and/or heated AdBlue line

Damage to the wiring harness may not be visible externally, as the outer tape can remain intact while the internal wires are melted and fused together.

Attachments	
File	Description
<a href="#">Exhaust2_compressed.jpg</a>	Example of Broken DPF



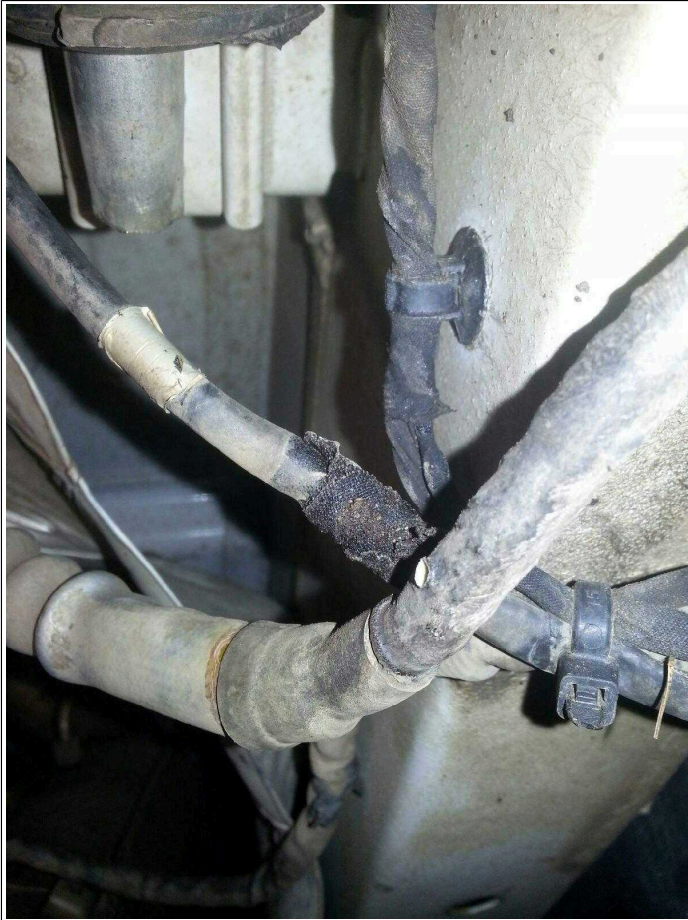
[Exhaust\\_compressed.jpg](#)

Close up of Broken DPF assembly in vehicle



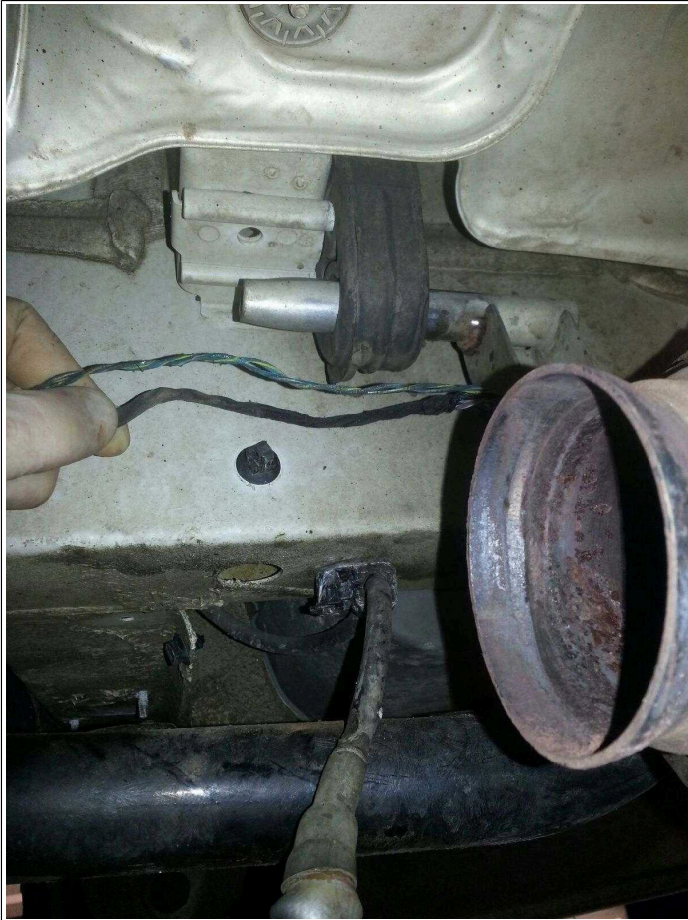
[melted harness 1\\_compressed.jpg](#)

Main Harness before removing outer tape



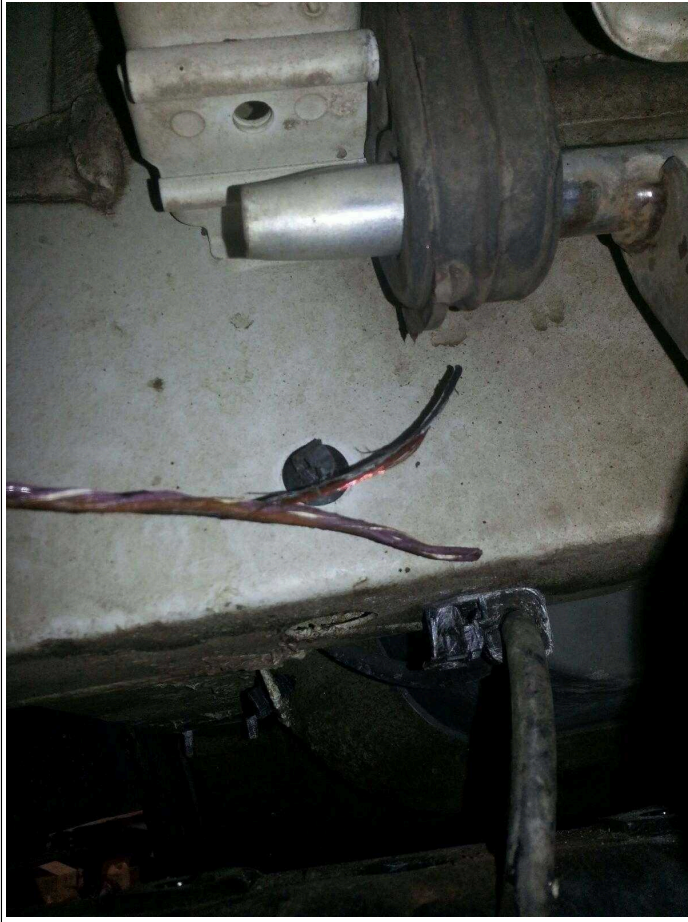
[Melted harness 2\\_compressed.jpg](#)

Main harness after outer tape is removed and melted wiring found



[Melted harness 3\\_compressed.jpg](#)

Main harness close up of melted wiring



## Remedy

Inspect the DPF assembly for cracks, separation, or leakage.

Do not proceed with further diagnosis or component replacement until the exhaust leak source has been identified and confirmed.

If any damage is found, replace the DPF filter assembly.

Based on the location of the failure, inspect all components in the path of the exhaust leak, including the dosing valve assembly and main wiring harness.

The wiring harness must be opened in any area exposed to the exhaust leak to visually inspect the individual wires. External inspection alone is not sufficient to determine harness condition.

Repair or replace any damaged wiring in accordance with approved repair procedures. Replace any dosing system components that show signs of heat damage.

Failure to identify and repair all heat-affected components will result in repeat faults or no-start conditions.

## WIS-References

Document number	Title	Note
AR00.19-P-0100-09A	Repairing wiring harness using solder connectors	

## Disclaimer

NOTE: The information contained in this document is intended for use by trained, professional technicians with the knowledge to properly and safely perform diagnosis and repairs on Mercedes-Benz vehicles, using Mercedes-Benz approved tools and equipment. It informs service technicians about conditions that could occur in certain vehicles and provides information that could assist in proper vehicle diagnosis, service, or repair. It does not indicate that a defect is present in any vehicle referenced in this document nor does it imply warranty coverage. DO NOT assume that a symptom or condition, or a described cause of a symptom or condition, affects any particular vehicle or groups of vehicles, or that a described repair applies to any particular vehicle or groups of vehicles. There can be multiple causes resulting in the same or similar symptoms or conditions described in this document, and trained professional service technicians must use their diagnostic skills to make evaluations on a case-by-case basis. The information contained in this document does not guarantee warranty coverage nor does it extend the vehicle's warranty in any way.

Symptoms						
Power generation > Exhaust system > Leakage > Leaks						
Parts						
Part number	ES1	ES2	Designation	Quantity	Note	EPC
A9064905581			Exhaust System DPF / O2 Catalyst w flex pipe	1		X
Control unit/fault code						
Control unit			Fault text			
CDI6Common Rail Diesel Injection (CR6NFZ)			134800 - No CAN message was received from control unit NOx sensor downstream of SCR catalytic converter.  134900 - No CAN message was received from control unit NOx sensor upstream of SCR catalytic converter.  11B300 - Component M3/5 (Fuel pump with fuel level sensor) has Short circuit to ground. ((BAUREIHE@906))  11EC00 - Starter control has short circuit to ground.  15E100 - Sensor CAN bus OFF error  155700 - Engine cannot be started.(Blocking)  162500 - The water content of the fuel filter has reached the upper limit value.  134300 - Event:No CAN message was received from control unit SCR.  102200 - Event:No CAN message was received from control unit SCR.  163400 - Event:One or more signals sent from control unit SCR via the CAN bus is implausible.  16CE00 - Event:The test of the AdBlue system has not yet been carried out.			
SCRControl unit AdBlue® (SCR CM)			C10002 - Communication with control unit 'Combustion engine' has a malfunction. There is a general signal fault. (MOPF)			

	<p>C1002F - Communication with control unit 'Combustion engine' has a malfunction. There is an erratic signal. (MOPF)</p> <p>C1008F - Communication with control unit 'Combustion engine' has a malfunction. The signal or message is erratic. (MOPF)</p> <p>C10031 - Communication with control unit 'Combustion engine' has a malfunction. The signal is not present. (MOPF)</p> <p>C10087 - Communication with control unit 'Combustion engine' has a malfunction. The message is missing. (MOPF)</p> <p>C10029 - Communication with control unit 'Combustion engine' has a malfunction. There is an invalid signal. (MOPF)</p> <p>C1001F - Communication with control unit 'Combustion engine' has a malfunction. There is a sporadic fault. (MOPF)</p> <p>C10081 - Communication with control unit 'Combustion engine' has a malfunction. Incorrect data were received. (MOPF)</p> <p>C10008 - Communication with control unit 'Combustion engine' has a malfunction. There is a signal fault or the message is faulty. (MOPF)</p> <p>C10013 - Communication with control unit 'Combustion engine' has a malfunction. There is an open circuit. (MOPF)</p> <p>C10039 - Communication with control unit 'Combustion engine' has a malfunction. The signal has too few pulses. (MOPF)</p>
--	--

**Operation numbers/damage codes**

Op. no.	Operation text	Time	Damage code	Note
			1437007	DPF Filter
540650	BATTERY CHARGER / MAINTAIN VOLTAGE			
541011	SHORT TEST			
549204	HARNES REPAIR			
495680	DPF/CAT			
495955	ADDITIONAL FOR WITHOUT SINGLE PIN BATTERY MAIN SWITCH			
495956	ADDITIONAL FOR ALL 642.898 ENGINES			
205445	ADDITIONAL FOR ALL 642.898 ENGINES			

