

Published  
 ID: 112837

Message

Target

Options

Approve / Deny

Clone

It Request

Communication

Close

<b>Publish Dates</b>	<b>Start Date</b> 6/16/2026 7:00 AM <b>End Date</b> 7/7/2026 11:55 PM Note: All times are EST
<ul style="list-style-type: none"> <li>The Start Date is when the communication will be visible to dealers in DCMail.</li> <li>The End Date is when the communication will no longer be visible to dealers in DCMail.</li> <li>NOTE: End Dates are limited to one (1) year from the Start Date. If you wish to lengthen the End Date, you may extend it at any time after publish.</li> </ul>	Extend End Date
<b>Title</b>	ARMREST - FRONT DOOR TRIM & PANEL - FRONT DOOR TRIM : ACCOUDOIR - GARNITURE ET PANNEAU DE PORTE AVANT - GARNITURE DE PORTE AVANT : APOYABRAZOS - EMBELLECEDOR Y PANEL DE LA PUERTA DELANTERA - EMBELLECEDOR DE LA PUERTA DELANTERA <i>What will display in DCMail for dealers to click on.          TIP: Keep titles short, but specific and eye catching.</i>
<b>Flagged for Reporting Agency</b>	NO
<b>Communication Summary</b>	ARMREST - FRONT DOOR TRIM & PANEL - FRONT DOOR TRIM : ACCOUDOIR - GARNITURE ET PANNEAU DE PORTE AVANT - GARNITURE DE PORTE AVANT : APOYAB <i>To increase search capability and visibility of your communication, please provide a brief summary or your message (140 characters max). This will display when dealers hover over your communication.</i>
<b>Message</b>	<i>The body of your communication. Use the formatting toolbar above to format text, insert tables, pictures, and/or hyperlinks.</i> Click Edit > Attach File to attach documents <b>IMPORTANT NOTES:</b> <ul style="list-style-type: none"> <li>Pictures must have unique file names. If you receive an error message when uploading a picture, it means the file name has already been chosen. Simply change your file name and try again.</li> <li>Communications cannot exceed more than 12MB; this includes images and text, and all attachments.</li> </ul>

You have been identified as either having stock on hand or in transit to your dealership.  
 Please check and return suspect stock of part numbers: 7HV111X7AA, 7HV581X7AA, 7HV751C5AA, 7ZB43TX7AA, 7ZB51TX7AA, 7ZB54TX7AA and 7ZC31LC5AA. Please refer to QIR attachment.  
 Please return all parts back to your facing depot using **Return Code 02**, before 7th July 2026.  
 For replacement place new orders.  
 Return any open orders in process too. Direct questions regarding returns via email to [mopardmail@stellantis.com](mailto:mopardmail@stellantis.com).



16-June-2026

## Quality Inspection Request

### ARMREST - FRONT DOOR TRIM & PANEL - FRONT DOOR TRIM

### Suspect Part Identification

**Part Numbers:** 7HV111X7AA, 7HV581X7AA, 7HV751C5AA, 7ZB43TX7AA, 7ZB51TX7AA, 7ZB54TX7AA and 7ZC31LC5AA

Correct Part

Suspect Part



**Good Parts :** Parts with correct profile finishing/ follows contour of substrate as above are good parts and can be used

**Bad Parts :** Parts with unfinished cut are suspect and must be quarantined.



**Demande d'inspection qualité**  
ACCOUDOIR - GARNITURE ET PANNEAU DE PORTE AVANT - GARNITURE DE PORTE  
AVANT

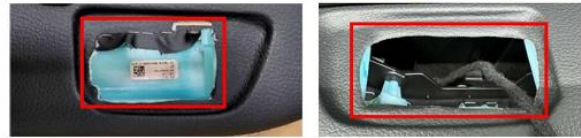
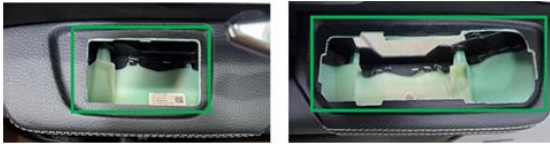
16-Juin-2026

**Identification de la pièce suspecte**

**Part Numbers:** 7HV111X7AA, 7HV581X7AA, 7HV751C5AA, 7ZB43TX7AA, 7ZB51TX7AA, 7ZB54TX7AA et 7ZC31LC5AA

Pièce correcte

Pièce suspecte



**Pièces de qualité :** Les pièces présentant une finition de profil correcte/épousant le contour du substrat comme indiqué ci-dessus sont de bonnes pièces et peuvent être utilisées.

**Pièces défectueuses :** les pièces présentant une coupe inachevée sont suspectes et doivent être mises en quarantaine.



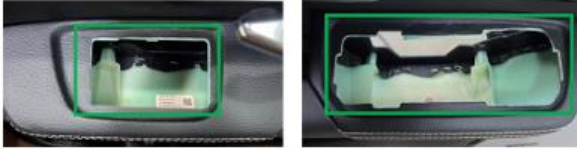
Solicitud de inspección de calidad

16 de junio de 2026

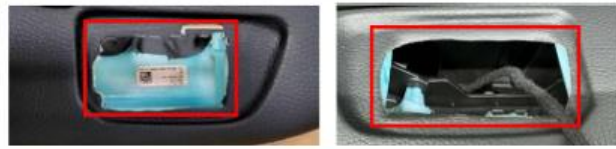
APOYABRAZOS - EMBELLECEDOR Y PANEL DE LA PUERTA DELANTERA -  
EMBELLECEDOR DE LA PUERTA DELANTERA  
Identificación de la pieza sospechosa

Part Number: 7HV111X7AA, 7HV581X7AA, 7HV751C5AA, 7ZB43TX7AA, 7ZB51TX7AA, 7ZB54TX7AA y 7ZC31LC5AA

Parte correcta



Parte sospechosa



**Piezas buenas:** Las piezas con un acabado de perfil correcto —es decir, que siguen el contorno del sustrato según lo indicado anteriormente— se consideran piezas buenas y pueden utilizarse.

**Piezas defectuosas:** Las piezas con cortes inacabados son sospechosas y deben ponerse en cuarentena.