



Countries: BAHAMAS, BOLIVIA, BELIZE, CANADA, CHILE, COLOMBIA, COSTA RICA, DOMINICAN REPUBLIC, ECUADOR, EL SALVADOR, GUATEMALA, GUYANA, HAITI, HONDURAS, JAMAICA, MEXICO, ARUBA, NICARAGUA, PANAMA, PERU, PUERTO RICO, TRINIDAD AND TOBAGO, UNITED STATES, URUGUAY, VENEZUELA, Curaçao

Document ID: IK1201506

Availability: ISIS, FleetSIS, NotSIR

Major System: ENGINE

Current Language: English

Other Languages: NONE

Viewed: 284

Revision: 1

Created: 2/24/2025

Last Modified: 6/23/2026

Author: Jaime Romo

[Less Info](#)

Hide Details

Coding Information

Copy Link 	Copy Relative Link 	Bookmark View My Bookmarks	Add to Favorites 	Print 	Provide Feedback 	Helpful 1	Not Helpful 0
----------------------	-------------------------------	--	-----------------------------	------------------	-----------------------------	-------------------------	-----------------------------

Title: A26 Turbochargers remanufactured by SRC between 05/01/2023 and 02/01/2025

Applies To: Vehicles with A26 engine

CHANGE LOG

Please refer to the change log text box below for recent changes to this article:

02/24/2025 - Initial Article Release

DESCRIPTION

This document will guide the user through to inspect **A26 turbochargers remanufactured by SRC** between **05/01/2023 and 02/01/2025**.

SRC Turbochargers assembled with new compressor housings may have a defect that prevents the TCOT sensor (**Part# 1845988C1, Sensor, Exhaust Gas Temp**) from being installed correctly.

SYMPTOM(s)

DTC/Light	Description
N/A	N/A

SPECIAL TOOL(S) / SOFTWARE

Tool Description	Tool Number	Comments	Instructions
N/Z	N/A		

SERVICE PARTS INFORMATION

Kit Description	Part Number	Quantity Required	Notes
N/A	N/A		

DIAGNOSTIC STEP(S)

N/A

INSTALLATION STEP(S)

WARNING! To prevent property damage, personal injury, and / or death, park vehicle on a hard, flat surface, turn the engine off, set the parking brake, and install wheel chocks to prevent the vehicle from moving in either direction.

WARNING! To prevent property damage, personal injury, and / or death, if the vehicle must be raised, do not work under the vehicle supported only by jacks. Jacks can slip or fall over.

WARNING! To prevent personal injury and / or death, always wear safe eye protection when performing vehicle maintenance.

WARNING! To prevent property damage, personal injury, and / or death, keep flames or sparks away from vehicle and do not smoke while servicing the vehicle's batteries. Batteries expel explosive gases.

WARNING! To prevent property damage, personal injury, and / or death, remove the ground cable from the negative terminal of the battery box before disconnecting any electrical components. Always connect the ground cable last.

1. Park vehicle on a level surface.
2. Shift transmission into Park or Neutral and set parking brake.
3. Turn ignition to Key OFF position.
4. Install wheel chocks.
5. Follow proper instructions for removal and installation of the turbo.
 - a. If the TCOCT sensor **does not present any interference** with the housing complete repairs, test drive vehicle and return to customer once the repairs are complete.
 - b. If the TCOCT sensor **does present interference** with the housing go to step 6.

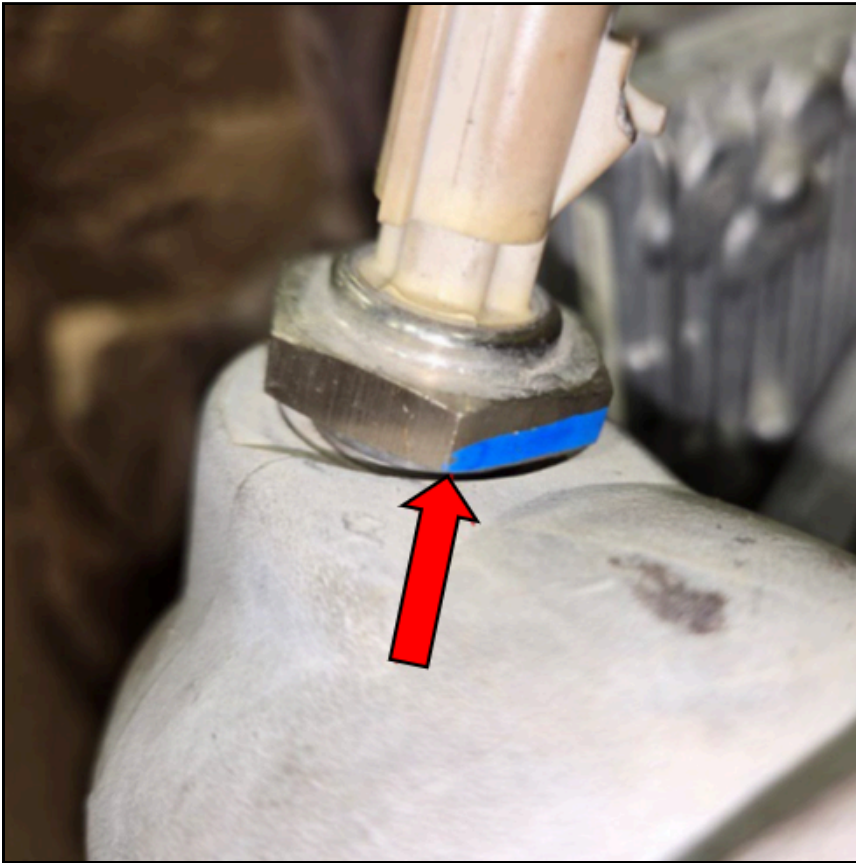


Figure 1. TCOCT Sensor Interference

6. See Figure 1, if the sensor exhibits the same condition (contact with the turbo compressor housing), refer to the SRC Technical Service Bulletin at the provided PDF link for additional details /service_kb/DocTool/Documents/Published/IK1201506/Files/TSB-02-13-25_A26_Turbocharger - file.pdf.
7. Remove wheel chocks.
8. Once repairs are completed, perform a road test to verify proper vehicle functionality and confirm normal system operation.

WARRANTY INFORMATION

Warranty Claim Coding:

Refer to the [Warranty Coding Manual](#) for Group and Noun Codes.

Standard Repair Time(s):

Refer to the [SRT Manual](#) for Repair Times

OTHER RESOURCES

[Master Service Information Site](#)

 Hide Details

Feedback Information

Viewed: 283
Helpful: 1
Not Helpful: 0

No Feedback Found