 Tesla, Inc. Service Bulletin		<h1>Rework Spoiler Outer Panel</h1>	
SB-25-11-007 June 12, 2026		R1	
Classification Repair Bulletin		Section/Group 11 - Closures	Mobile Service Can Perform (where permitted)
Model Model Y		Model Year 2025	Country/Region Europe, North America
		Build Location Fremont, Giga Berlin, Giga Texas	
<small>The model(s) and model year(s) listed are a general approximation of the affected VIN list. Refer to the VIN/Bulletin Tracker or Customer/Vehicle profile to determine applicability of this bulletin for a particular vehicle.</small>			

Repair Bulletin: This repair bulletin provides instructions on addressing a possible customer concern regarding the operation of Tesla vehicles. These instructions should only be performed by trained professionals.


This Service Document supersedes SB-25-11-007, dated October 31, 2025. This new revision, R1, adds North American vehicles. Each content change is marked by a vertical line in the left margin. Discard the previous version and replace it with this one.

Condition

On certain Model Y vehicles, a gap between the liftgate and the spoiler outer panel may produce a whistling sound if the vehicle is driven at high speed.

Correction

Upon customer complaint of noise coming from the liftgate area, rework the spoiler outer panel.

 **NOTE:** If this bulletin is applicable to the vehicle, perform the correction without any need for inspection.

Correction Description	Correction	Time
Rework Spoiler Outer Panel	S012511007	0.36

Part Number	Description
Shop Supplies	Isopropyl Alcohol (IPA) wipes
1832735-00-A	For Europe: Tape, Vehicle Sealing
2482150-00-A	For North America: 3M Foam Sealant Tape (Acrylic adhesive)

These part numbers were current at the time of publication. Use the revisions listed or later, unless otherwise specified in the [Parts Catalog](#).

Procedure

1. Remove the spoiler outer panel (refer to Service Manual procedure [1133050502](#)).
2. Clean the LH and RH edges of the liftgate with IPA wipes, and then allow 1 minute to dry (Figure 1).

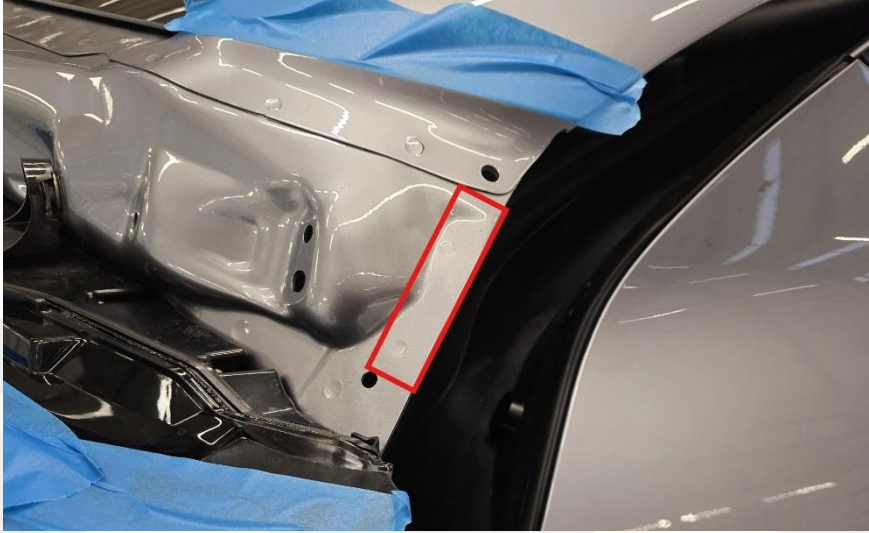


Figure 1 – RH shown, LH similar.

3. Prepare two pieces of tape. Cut the tape at a length of 9,5cm (3.75in).
4. Apply the pieces of tape (x2) on the LH and RH edges of the liftgate, leaving a gap of 5mm from the edge of the liftgate (Figure 2).

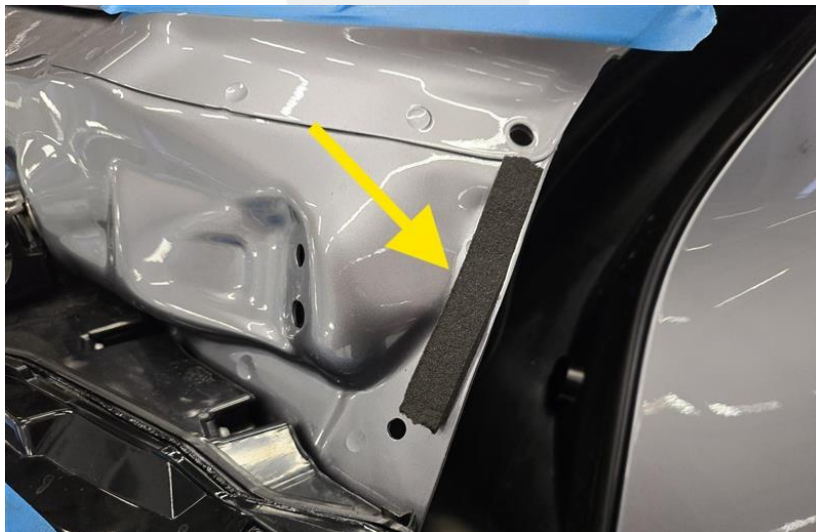


Figure 2 – RH shown, LH similar.

5. Install the spoiler outer panel (refer to Service Manual procedure [1133050502](#)).