

- ATTENTION:**
- GENERAL MANAGER
  - PARTS MANAGER
  - CLAIMS PERSONNEL
  - SERVICE MANAGER

IMPORTANT - All Service Personnel Should Read and Initial in the boxes provided, right.


© 2025 Subaru of America, Inc. All rights reserved.



QUALITY DRIVEN® SERVICE

## SERVICE BULLETIN

**APPLICABILITY:** 2023-25MY Legacy & Outback  
 2026MY Outback  
 2022-26MY WRX  
 2022-26MY Forester  
 2023-26MY Ascent  
 2024-26MY Impreza & Crosstrek

**NUMBER:** 07-240-26

**DATE:** 06/10/26



**SUBJECT:** EyeSight Stereo Camera Removal & Installation Tips

**INTRODUCTION:**

This Service Information Bulletin was developed to provide removal and installation tips to be followed when working with EyeSight Stereo Cameras. These tips will help prevent damage to the camera lenses and calibrations errors. Links to STAR-U training videos have been provided within this bulletin. This information is to be used in conjunction with the procedure information provided in the applicable Subaru Service Manual.

**REQUIRED TOOLS:**

The following tools have been developed to prevent EyeSight stereo camera damage. These two tools are considered essential and expected to start shipping to retailers starting in August 2026. In addition to the essential tool shipment, both tools are shipped with new EyeSight stereo cameras.

Description	Part Number	Image
HOOD RH	87512VC000	
HOOD LH	87512VC010	

**IMPORTANT NOTE:** When a new EyeSight camera is ordered and received by a retailer, please save and store the hood covers that are delivered with the camera after the retention period for the previous replaced camera has completed. These covers can be used with the steps outlined in this TSB for other EyeSight replacements or repairs


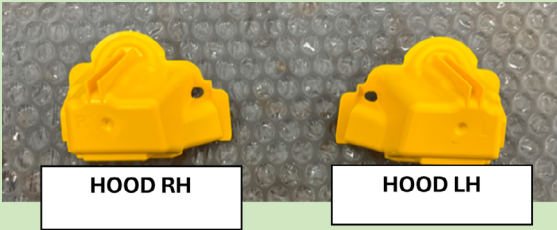


<p><b>CAUTION: VEHICLE SERVICING PERFORMED BY UNTRAINED PERSONS COULD RESULT IN SERIOUS INJURY TO THOSE PERSONS OR TO OTHERS.</b></p> <p>Subaru Service Bulletins are intended for use by professional technicians ONLY. They are written to inform those technicians of conditions that may occur in some vehicles, or to provide information that could assist in the proper servicing of the vehicle. Properly trained technicians have the equipment, tools, safety instructions, and know-how to do the job correctly and safely. If a condition is described, DO NOT assume that this Service Bulletin applies to your vehicle, or that your vehicle will have that condition.</p>	<p style="text-align: center;"><b>Subaru of America, Inc. is ISO 14001 Compliant</b></p> <p>ISO 14001 is the international standard for excellence in Environmental Management Systems. Please recycle or dispose of automotive products in a manner that is friendly to our environment and in accordance with all local, state and federal laws and regulations.</p>
--	--

*Continued...*

## SERVICE PROCEDURE / INFORMATION:

**NOTE:** Video links regarding this info are located on page #8.

### REMOVAL PREPARATIONS:

Preparations Prior to Removal	
GOOD	NOT GOOD
<p>Before removing the EyeSight stereo camera, confirm the battery is disconnected and be sure to disconnect the power connector.</p>  <p>Prepare the lens covers (HOOD RH/LH) before removing the EyeSight camera.</p> <p>Preparation items: HOOD RH (part No. 87512VC000) HOOD LH (part No. 87512VC010) NOTE: Both tools are considered essential.</p> 	<p><b>DO NOT</b> allow the EyeSight stereo camera to hang by its connector.</p>  <p>If the stereo camera is suspended by the connector, it may contact the rearview mirror or other components, causing <b>IMPACT/DAMAGE</b>.</p> 

### REMOVAL:

Due to variation between different models and sizing of Technician hands, two categories have been developed. See below for details.

**CATEGORY 1:** Crosstrek, Impreza, Ascent, WRX, 2022-24MY Forester, and 2025MY Forester Wilderness.

**CATEGORY 2:** 2025MY Forester (excluding Wilderness models), All 2026MY Forester, Legacy, and Outback

**NOTE: CATEGORY 2** incorporates suggestions for Technicians with larger hand sizes.

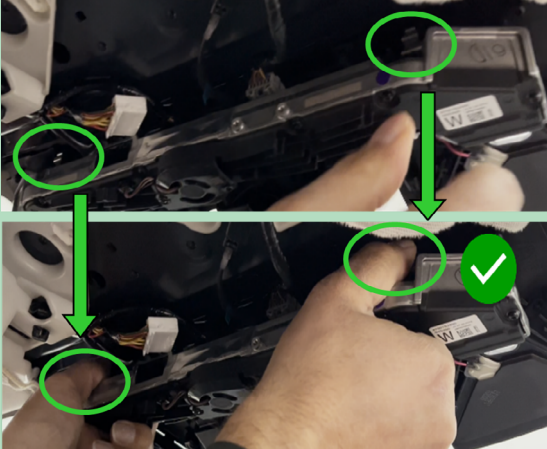
*Continued...*

## Removal of Clip & Stereo Camera

CATEGORY 1: CROSSTREK / IMPREZA / ASCENT / WRX / FORESTER (22MY–24MY) w/  
25MY Wilderness

### GOOD

Being careful not to touch either camera lens with your fingers, place a thumb on the clip and guide, and place other fingers on the front side part of stereo camera.

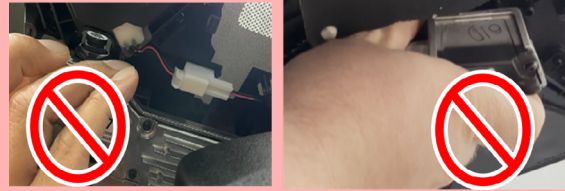


Using the thumb as a supporting point, push the stereo camera from the front side to the rear side horizontally towards you, using the other fingers to slowly release the engagement of the clips. Both clips should disengage simultaneously.



### NOT GOOD

**DO NOT** touch the camera lens.



**CAUTION:** When removing the locating pins of stereo camera, release both the left and right side simultaneously. If one pin is fully disengaged and you attempt to remove the other pin by itself, it may become stuck and damage may occur.

If only one side releases, **DO NOT** attempt to force it free. Reinstall the side with the loose clip and reattempt camera removal.



*Continued...*

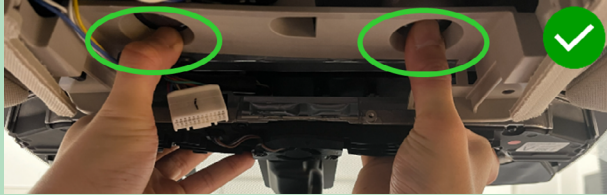
## Removal of Clips and Stereo Camera

**CATEGORY 2:** FORESTER (25MY-) w/o Wilderness / LEGACY / OUTBACK / ALL 26MY FORESTER

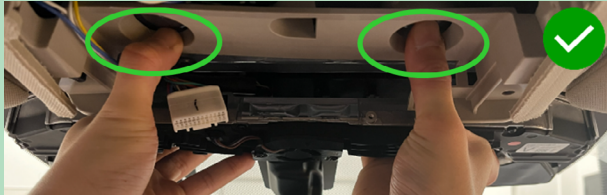
### GOOD

Place your thumb on the mounting-hole area of the overhead console and position your other fingers on the front section of the EyeSight camera. Be careful not to touch the lenses with any fingers.

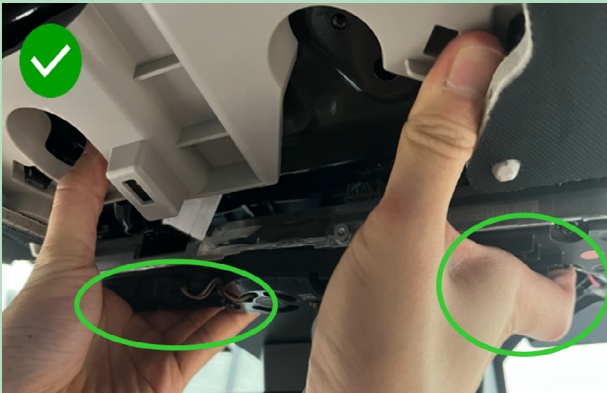
#### LEGACY/OUTBACK



#### FORESTER



**DO NOT** attempt to pull on the camera using your thumbs. Use your thumb as a pivot point, push the stereo camera upward with your palm while slowly sliding it rearward in a horizontal direction with your other fingers. After the camera is removed, carefully take it out of the work area.

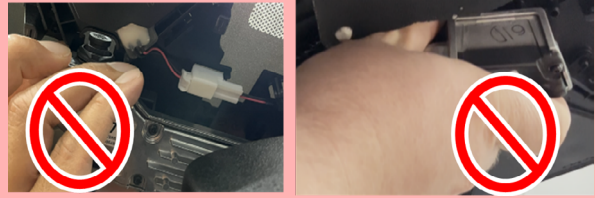


1. Push upward

2. Slide toward the rear of the vehicle in a horizontal direction

### NOT GOOD

**DO NOT** touch the camera lens.



If the base of the fingers (palm) is not used, it becomes difficult to apply upward force, making the unit harder to remove.



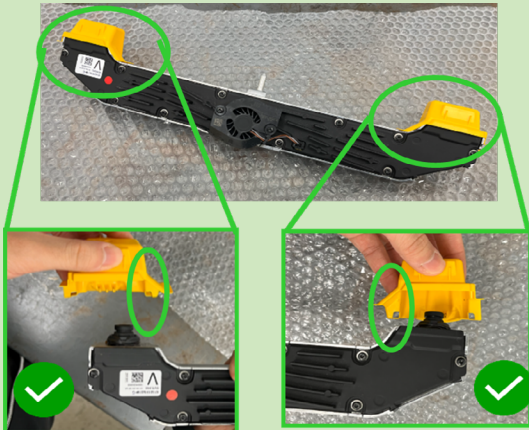
*Continued...*

## DETAILS USING THE HOOD RH/LH TOOLS:

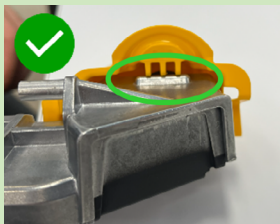
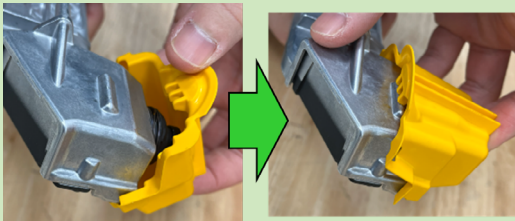
### Installing the HOOD RH/LH (Lense Covers) into the Stereo Camera

#### GOOD

Install the HOOD RH/LH



Install the cover while paying attention to its orientation, ensuring it does not contact the lens.

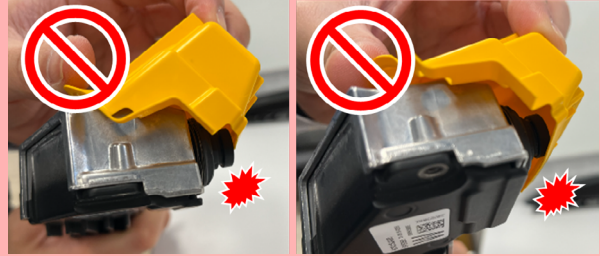


When temporarily removing and storing the EyeSight stereo camera, observe the following precautions:

- A. Install the lens covers.
- B. Place the camera with the cooling-fan side facing upward on a flat surface, using cushioning material or cloth to prevent any impact.
- C. Ensure that no other parts, tools, or objects come into contact with the stored camera.

#### NOT GOOD

When installing the HOOD, make sure it does not contact the lens. It can cause miscalibration.



**DO NOT** install the left and right HOOD in reversed positions.



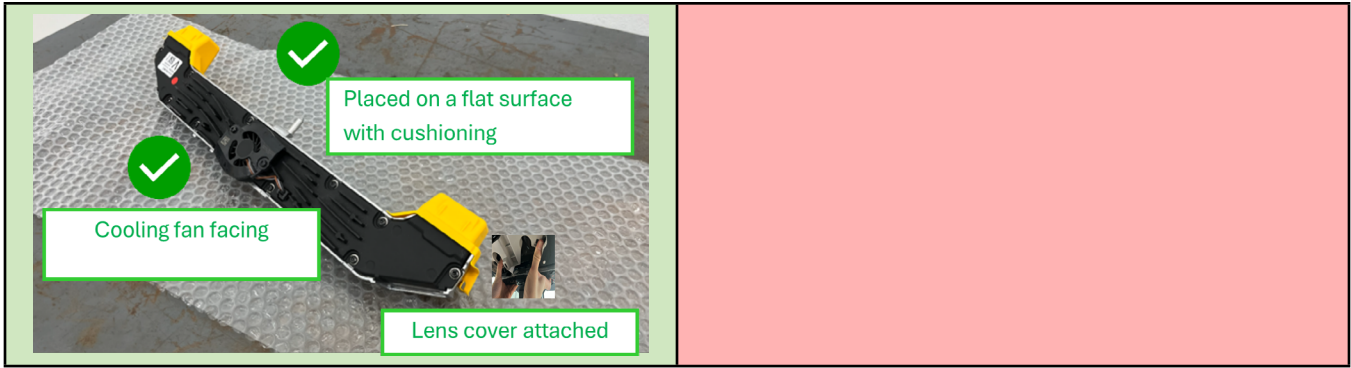
**DO NOT** place it down without the lens cover.



**DO NOT** place the stereo camera inside the vehicle or in any similar enclosed area.



*Continued...*



**HANDLING THE EYESIGHT STEREO CAMERA:**

<b>Handling Tips For Eyesight Stereo Camera</b>	
<b>GOOD</b>	<b>NOT GOOD</b>
<p>When handling the stereo camera, hold it in a manner that avoids contact with the lenses and the cooling-fan area.</p>	<p>Touching the camera lens can cause miscalibration.</p> <p><b>DO NOT</b> touch the fans.</p> <p><b>DO NOT</b> touch the lens.</p>

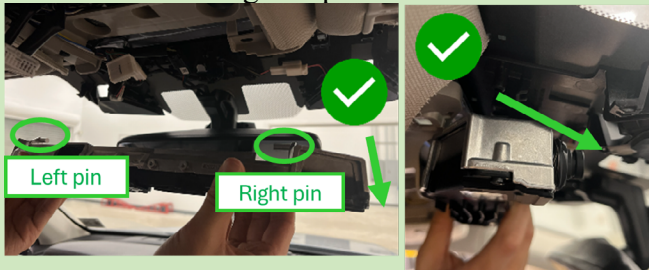
*Continued...*

# INSTALLATION:

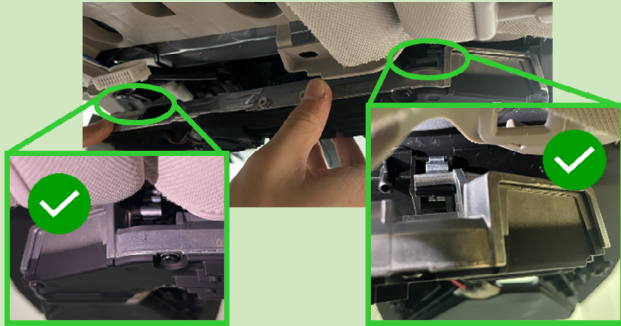
## Install the Stereo Camera

### GOOD

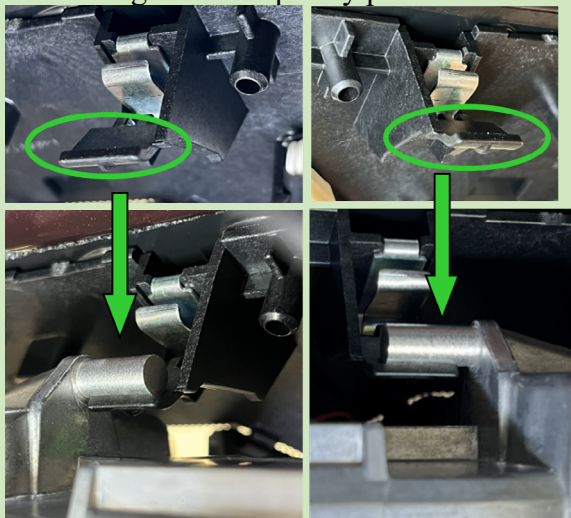
**DO NOT** remove the HOOD RH/LH until just before installing the EyeSight stereo camera. When bringing the left and right alignment pins of the stereo camera closer to the camera bracket, keep the lens angled downward not to allow the lens to contact surrounding components.



Place the left and right alignment pins of the stereo camera onto the temporary holding positions of the camera bracket one at a time.



Detailed Images for temporary position.



### NOT GOOD

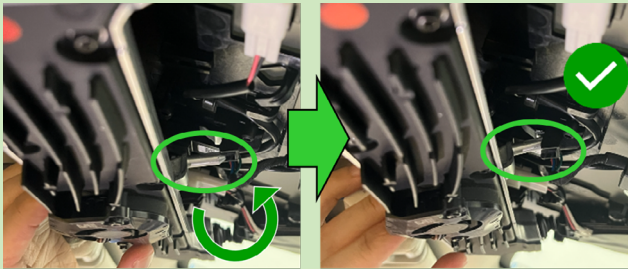
**DO NOT** lean the EyeSight stereo camera with the lens facing upward. This can lead to risk of impact of the camera lens with the camera bracket, causing miscalibration.

**NOTE:** Installing the unit while looking at the locating pins may cause it to tilt in the upward direction.



*Continued...*

After temporarily placing the locating pins, rotate the stereo camera and align the center pin with the position on the camera bracket.



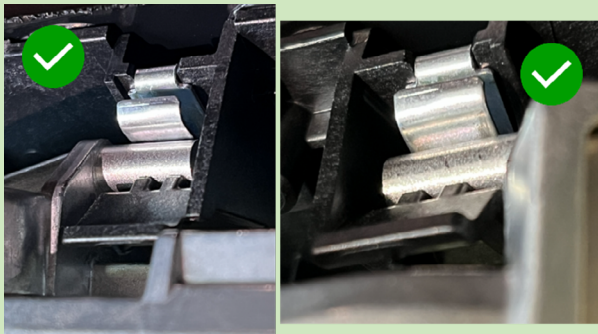
Rotate upward

Push both locating pins forward at the same time slowly.



Push forward slowly

Correct assembly condition.



The links below provides access to a detailed videos regarding this information.

Full Video: [EyeSight Removal, Storage, and Installation](#)

Specific Model Information:

[Ascent/Impreza/Crosstrek/WRX/Forester \(22MY-24MY\) & 25MY Wilderness](#)

[Legacy & Outback](#)

[25MY Forester without Wilderness & 26MY Forester](#)

*Continued...*

**IMPORTANT REMINDERS:**

- SOA strongly discourages the printing and/or local storage of service information as previously released information and electronic publications may be updated at any time.
- Always check for any open recalls or campaigns anytime a vehicle is in for servicing.
- Always refer to STIS for the latest service information before performing any repairs.