

**ATTENTION:**  
 GENERAL MANAGER   
 PARTS MANAGER   
 CLAIMS PERSONNEL   
 SERVICE MANAGER

IMPORTANT - All Service Personnel Should Read and Initial in the boxes provided, right.


© 2026 Subaru of America, Inc. All rights reserved.



QUALITY DRIVEN® SERVICE

**SERVICE BULLETIN**

**APPLICABILITY:** 2022-26MY WRX **NUMBER:** 05-98-26  
**SUBJECT:** C2922, C2923, C2924, C2925, **DATE:** 06/02/26  
 C2926, C2927, C2928, C2929  
 / Reprogramming Files

**INTRODUCTION:**

This bulletin announces the availability of new reprogramming files developed to address cases in which the following DTCs are detected by the Electric Control Damper Control Unit (ECU Damper).

- C2922: DAM G SENSOR SHORT TO BATTERY (FL)
- C2923: DAM G SENSOR CIRCUIT OPEN (FL)
- C2924: DAM G SENSOR SIGNAL (FL)
- C2925: DAM G SENSOR SHORT TO GROUND (FR)
- C2926: DAM G SENSOR SHORT TO BATTERY (FR)
- C2927: DAM G SENSOR CIRCUIT OPEN (FR)
- C2928: DAM G SENSOR SIGNAL (FR)
- C2929: DAM G SENSOR SHORT TO GROUND (FL)

The new software contains enhanced logic that provides a more accurate detection of the DTCs listed above. If any of these DTCs are detected, perform the procedure outlined in this bulletin.

<p><b>CAUTION: VEHICLE SERVICING PERFORMED BY UNTRAINED PERSONS COULD RESULT IN SERIOUS INJURY TO THOSE PERSONS OR TO OTHERS.</b></p> <p>Subaru Service Bulletins are intended for use by professional technicians ONLY. They are written to inform those technicians of conditions that may occur in some vehicles, or to provide information that could assist in the proper servicing of the vehicle. Properly trained technicians have the equipment, tools, safety instructions, and know-how to do the job correctly and safely. If a condition is described, DO NOT assume that this Service Bulletin applies to your vehicle, or that your vehicle will have that condition.</p>	<p style="text-align: center;"><b>Subaru of America, Inc. is ISO 14001 Compliant</b></p> <p>ISO 14001 is the international standard for excellence in Environmental Management Systems. Please recycle or dispose of automotive products in a manner that is friendly to our environment and in accordance with all local, state and federal laws and regulations.</p>
--	--

*Continued...*

**PRODUCTION CHANGE INFORMATION:**

This software has already been incorporated into the VIN listed in the chart below.

Model	Starting VIN
WRX	JF1VBAV60T8804555

**PFC FILE APPLICABILITY:**

File Name	Old Part Number	Old CID/ROM ID	New CID/ROM ID
DAM_20342VC011.pfc	20342VC010	1EA0000001	1EA0000011
DAM_20342VC041.pfc	20342VC040	3EA0000005	3EA0000015
DAM_20342VC051.pfc	20342VC050	4EA0000006	4EA0000016

**PAK FILE APPLICABILITY:**

File name	Old Part Number	Keyword	New CID
DAM_20342VC011.pk2	20342VC010	055E973A	1EA0000011

**PART INFORMATION:**

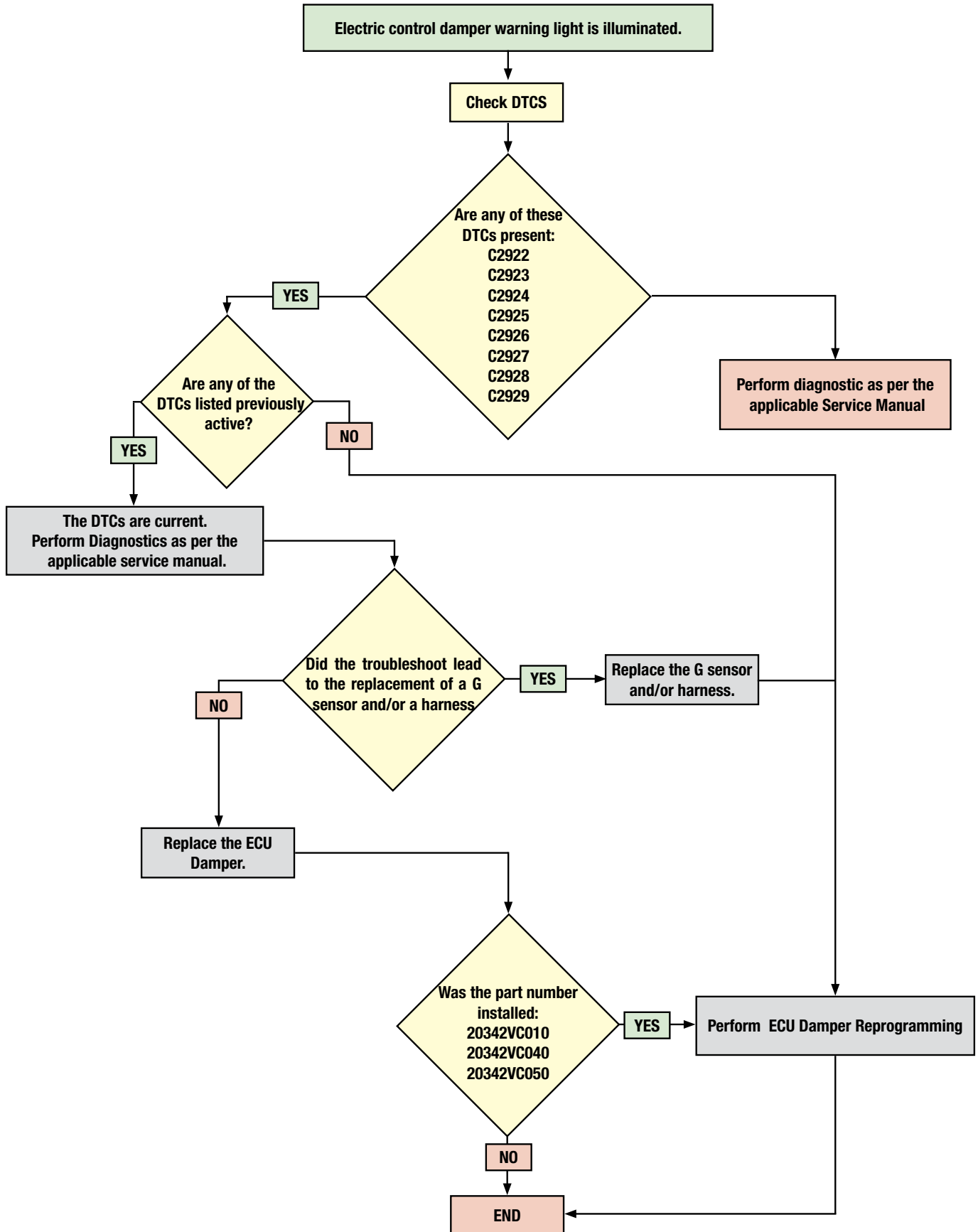
**REMINDER:** Always order the most up-to-date replacement parts based on the specific VIN being repaired.

Old Part Number	Description	New Part Number
20342VC010	ECU Damper	20342VC011
20342VC040	ECU Damper	20342VC041
20342VC050	ECU Damper	20342VC051

*Continued...*

## SERVICE PROCEDURE / INFORMATION:

**REMINDER:** Customer satisfaction and retention starts with performing quality repairs.



*Continued...*

**Step 1:** Check DTCs. Are any of these DTCs C2922, C2923, C2924, C2925, C2926, C2927, C2928, C2929 present?

**Yes:** Go to Step 2.

**No:** Perform diagnostic as per the applicable Service Manual

**Step 2:** Are any of these DTCs C2922, C2923, C2924, C2925, C2926, C2927, C2928, C2929 current?

**Yes:** Perform diagnostics per the applicable service manual, then go to Step 3.

**No:** Perform ECU Damper Reprogramming.

**Step 3:** Did the diagnostic lead to the replacement of a G sensor or a harness replacement or repair?

**Yes:** Perform the recommended repair as per the trouble shooting and then perform the ECU Damper Reprogramming.

**No:** Go to Step 4.

**Step 4:** Did the diagnostics lead to the replacement of the ECU Damper?

**Yes:** Replace the ECU Damper confirm that the installed part is listed under a new part number in the parts information section. If the part number is listed as an old part number, perform ECU Damper Reprogramming.

**No:** End

For **2022MY WRX** follow the normal FlashWrite procedure. Ensure the DCA-8000 is set to power supply mode and connected to the vehicle's battery.

For **2023-26MY WRX** follow the normal SSM5-R reprogramming procedure which can be found in **TSB 14-28-21R**. Ensure the DCA-8000 is set to power supply mode and connected to the vehicle's battery.

Subaru of America, Inc. (SOA) highly recommends utilizing either the Subaru Midtronics DCA-8000 Dynamic Diagnostic Charging System or the Subaru Midtronics GR8-1100 Diagnostic Battery Charger to the vehicle and utilizing the Power Supply Mode feature anytime a vehicle control module is being reprogrammed. Once the Midtronics charger is connected to the vehicle, if the battery is fully charged, it takes less than three (3) minutes to boot-up the charger, select the Power Supply Mode, and have the battery voltage stabilized and ready for reprogramming.

#### **NOTES:**

- For instructions on using the Power Supply Mode, reference the applicable User Manual for the Midtronics DCA-8000 Dynamic Diagnostic Charging System and the Midtronics GR8-1100 Diagnostic Battery Charger on STIS
- Confirm all electrical loads such as lights, audio, HVAC, seat heaters, and rear defroster are all switched OFF before setting up the charger for Power Supply Mode.
- Select the correct battery type (Enhanced Flooded, Flooded, Gel, AGM or AGM Spiral).
- Input the CCA which matches the vehicle's battery. NOTE: OE and replacement batteries have different CCA ratings. Always confirm the battery's CCA rating before proceeding.
- If using a DCA-8000 Dynamic Diagnostic Charging System, set the power supply voltage to 13.5 Volts.

*Continued...*

- DO NOT connect the DST-i or DST-010 until the Power Supply mode function has completed its battery test mode and the Charging Voltage has dropped to and shows a steady 13.5 Volts on the display.
- Once Power Supply Mode reaches a steady 13.5 Volts, connect the DST-i or DST-010 to the OBD connector and proceed with initiating the normal SSM5-R reprogramming process.
- Amperage will fluctuate based upon the vehicle's demand for power. NOTE: If the voltage rises beyond 14 Volts while programming is in process, the procedure will abort. This can indicate a need to test or charge the vehicle battery before any further attempt at programming is made.
- ALWAYS set the power supply voltage to 13.5 Volts when using Power Supply Mode. NEVER turn the ignition switch on when charging at voltages 15 Volts or higher.

**REMINDER:** If the DCA-8000 or GR8-1100 indicates the vehicle's battery must be charged, charge the battery fully before proceeding to reprogram the vehicle while using the Power Supply Mode.

**NOTE:** Control module failures resulting from battery discharge during reprogramming are not a matter for warranty. Should any DTCs reset after the reprogramming update is performed, diagnose per the procedure outlined in the applicable Service Manual.

### WARRANTY / CLAIM INFORMATION:

For vehicles within the Basic New Car Limited, covered by an active Subaru Added Security Classic or Gold plan, this repair may be submitted using the following claim information:

Claims Type	Labor Description	Labor Operation #	Labor Time	Fail Code	Dispatch Assignment
WC, SAS	REPROGRAM ECU DAMPER *	A566886	0.4h	TUP48	SG 06 / SL 02

Claims Type	Labor Description	Labor Operation #	Labor Time	Fail Code	Dispatch Assignment
WC, SAS	DAMPER ECU REPROGRAM AND REPLACE*	B567286	0.8h	UXM42	SG 06 / SL 02
	ADJUSTABLE RIDE CONTROL DIAGNOSTICS	C566399	0.5h		

Claims Type	Labor Description	Labor Operation #	Labor Time	Fail Code	Dispatch Assignment
WC, SAS	DAMPER ECU REPROGRAM AND FRONT G SENSOR OR HARNESS R&R*	B566386	0.8h	UXN42; GSENSOR OR UX042 ; DAMPER HARNESS	SG 06 / SL 02
	ADJUSTABLE RIDE CONTROL DIAGNOSTICS	C566399	0.5h		

The Skill Group and Skill Level listed in this bulletin define the qualifications recommended for this work. Repairs should be dispatched to a technician who is trained at the specified level. For more information on Labor Operation Skill Group/Level assignments, [click here to access the Gear Reduction](#). To request a Skill Group/Skill Level change, [fill out this form](#).

*Continued...*

**\*IMPORTANT:** Always note the original Calibration Identification number (CID) / ROMID the vehicle came in with on the repair order **before** reprogramming and, make sure to list the **NEW CID / ROMID** for any newly installed programming (as confirmed from the actual control module **AFTER** installation). The **NEW CID / ROMID MUST** also be noted on the repair order as this information is required for entry in the Claim Specific Detail field during claim submission. These numbers can be read using SSM5-R.

**IMPORTANT REMINDERS:**

- SOA strongly discourages the printing and/or local storage of service information, as previously released information and electronic publications may be updated at any time.
- Always check for any open recalls or campaigns anytime a vehicle is in for servicing.
- Always refer to STIS for the latest service information before performing any repairs.