

Product Update: 2024 ZDX Rear Chassis Harness Connector Cavity Plugs Inspection

APPLIES TO

Year	Model	Trim Level	VIN Range
2024	ZDX	A-Spec	Check iN VIN status for eligibility.

BACKGROUND

Certain 2024 ZDX vehicles may have improperly installed or missing cavity plugs from the rear chassis harness electrical connector.

OWNER NOTIFICATION

Owners of affected vehicles will be sent a notification of this campaign.

Do an iN VIN status inquiry to make sure the vehicle is shown as eligible.

Some vehicles affected by this campaign may be in your new or used vehicle inventory.

Failure to repair a vehicle subject to a recall or campaign may subject your dealership to claims or lawsuits from the vehicle owner and/or anyone else harmed as a result of such failure. To verify if a vehicle in inventory is affected, do a VIN status inquiry before selling it.

CORRECTIVE ACTION

Inspect the rear chassis harness connectors and replace any missing cavity plugs, then fully set the remaining cavity plugs as necessary. In rare cases, if corrosion is found on the terminal pins that cannot be cleaned off with electrical contact cleaner, the associated harness will need to be replaced.

CLIENT INFORMATION: The information in this bulletin is intended for use only by skilled technicians who have the proper tools, equipment, and training to correctly and safely maintain your vehicle. These procedures should not be attempted by “do-it-yourselfers,” and you should not assume this bulletin applies to your vehicle, or that your vehicle has the condition described. To determine whether this information applies, contact an authorized Acura automobile dealer.

WARRANTY CLAIM INFORMATION

NOTE: Before replacing the chassis and/or body wiring harnesses, take clear photos of the corrosion on the harness connector(s). These photos must be submitted with the warranty claim. Any claims received that include the chassis and/or body harness replacement, but **do not** include the requested photos, will be returned.

Operation Number	Description	Flat Rate Time	Defect Code	Symptom Code	Template ID	Failed Part Number
------------------	-------------	----------------	-------------	--------------	-------------	--------------------

If NO cavity plugs are being replaced, use this labor operation number.

7375A7	Inspect chassis harness connector cavity plugs. Reinstall connector cavity plugs.	0.6 hr	6WM00	ONQ00	B26044A	85051530
--------	-----------------------------------------------------------------------------------	--------	-------	-------	---------	----------

If ANY cavity plugs are being replaced, use this labor operation number.

7375A8	Inspect chassis harness connector cavity plugs. Replace connector cavity plugs.	0.6 hr	6WM00	ONQ00	B26044B	85051530
A	For photo submission to Tech Line if parts order is declined - add	0.1 hr			B26044C	

If harness replacement is required, use the appropriate labor operation number. For templates E or F, enter the body harness part number on the template.

7371FE	Replace the chassis harness (includes inspection, photos & DTC clear)	1.1 hr	6WM00	ONQ00	B26044D	85051530
7371FF	Replace the body harness (includes inspection, photos & DTC clear)	22.1 hr			B26044E	
7371FG	Replace the chassis & body harness (includes inspection, photos & DTC clear)	22.8 hr			B26-044F	

PARTS INFORMATION

Cavity Plug Parts (If required)

NOTE:

- The likelihood of missing cavity plugs is low.
- Cavity plugs are available via normal ordering through WARP. Reference PIB B26-0003 for program details.

Part Name	Part Number	Quantity
Medium Cavity Plug (Red)	85852822	As needed
Large Cavity Plug (Gray/Green)	85852819	As needed

Chassis Harness or Chassis Harness with Body Harness Ordering Process (if required)

The chassis harness and body harness parts are controlled parts.

To order the chassis harness or chassis harness with body harness, follow the link or QR code to upload photos showing the corrosion in the connector(s).

- When the request is submitted, an acknowledgement will be sent that the submission has been received (This is NOT an approval).
- Once the request has been reviewed, an email will be sent with the decision on the request.
 - If approved, the harness(es) will be released to your dealer. The remainder of the required parts can now be ordered.
- Requests through normal parts ordering can take up to three (3) days to complete.

[ZDX Harness Request](#)



Chassis Harness Parts (if required)

NOTE: The likelihood of needing to replace the chassis wiring harnesses is very low.

Chassis Wiring Harness	Controlled Part – part will be shipped to dealer after connector photos have been reviewed and harness replacement is approved.	1
------------------------	---------------------------------------------------------------------------------------------------------------------------------	---

Body Harness Parts (if required)

NOTE:

- The likelihood of needing to replace the body wiring harnesses is very low.
- All parts listed below have been determined to be “Must Replace Parts” for the body harness replacement.
- **Do not** order the parts below until the body harness replacement approval has been received.

Part Name	Part Number	Quantity
Body Wiring Harness	Controlled Part – part will be shipped to dealer after connector photos have been reviewed and harness replacement is approved.	1
Steering Wheel Bolt	11610164	1
Front Seat Belt Anchor Plate Bolt	11546396	2
Front Seat Bolt	11604823	8
Rear Seat Belt Bolt	11602773	1
Rear Seat Bolt	11604358	8
Rear Seat Cushion Frame Retainer	20823966	2
Bolt M8X1.23X25	11603069	4
Seal 3/8”	13579649	7
Seal 3/4”	13579646	2
Seal	13579648	4
Seal	84746980	2
Seal	84817090	1
Seal	84746981	1
Receiver & Dehydrator	85716259	1
Heater & Blower Module Bolt	11603972	2
BEV POI Oil Type PZ	38899-REV-A01	1

REQUIRED MATERIALS

Part Name	Part Number	Quantity
Electrical Contact Cleaner	Commercially Available	1

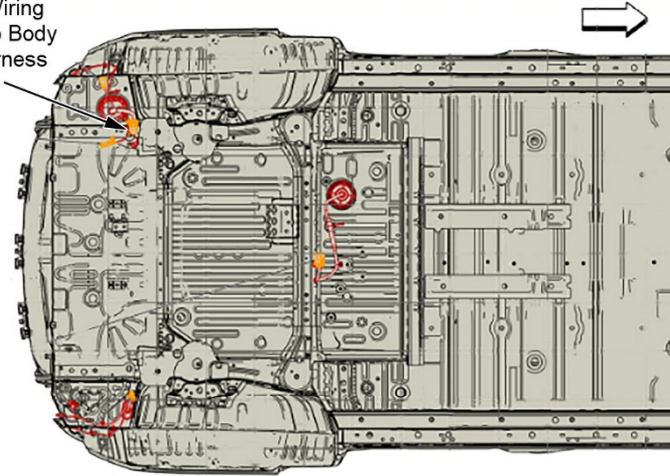
TOOL INFORMATION

Tool Name	Tool Number	Quantity
Mahle A/C Machine	RTIACX2282	1
A/C Oil Injector	07-J-45037	1
R1234yf A/C Oil Injector Hose	07-GE-50745	1

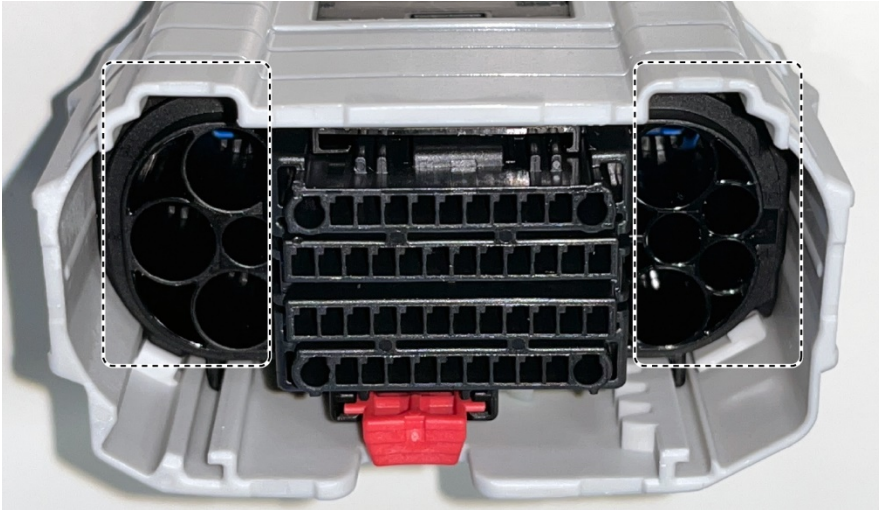
INSPECTION / REPAIR PROCEDURE

1. Disconnect the 12-volt battery. See [Battery Negative Cable Disconnection and Connection](#).
2. Raise the vehicle. See [Lifting and Jacking the Vehicle](#).
3. Remove the underbody rear air rear deflector. Do steps 2–6 of the Removal Procedure in [Underbody Rear Air Rear Deflector – Rear](#).
4. Locate the body wiring harness to chassis harness connector at the right-rear underside of the vehicle and remove it from the bracket for access.

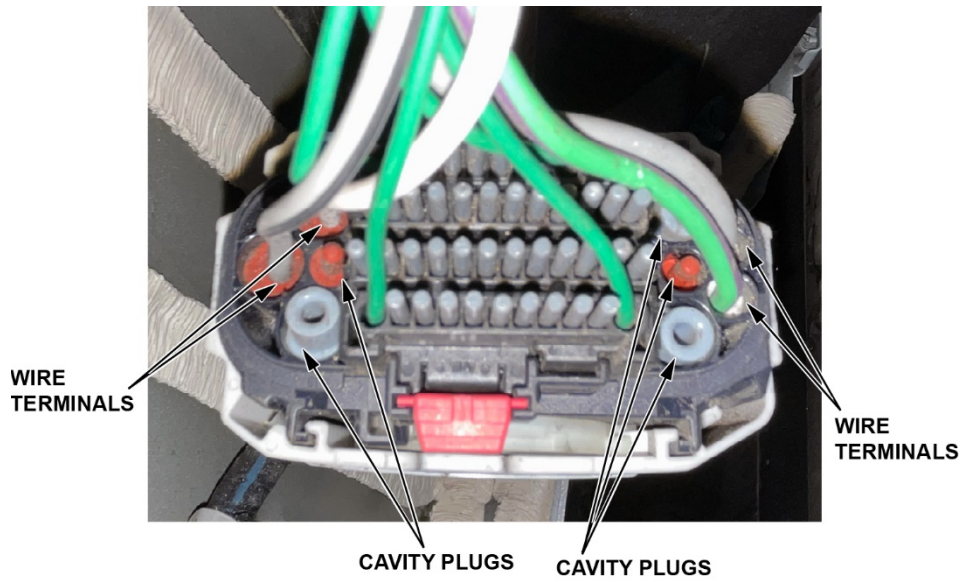
Chassis Wiring
Harness to Body
Wiring Harness



5. Inspect the back side of the chassis harness connector. The following cavity locations should have either a wire or cavity plug inserted (depending on the vehicle trim).

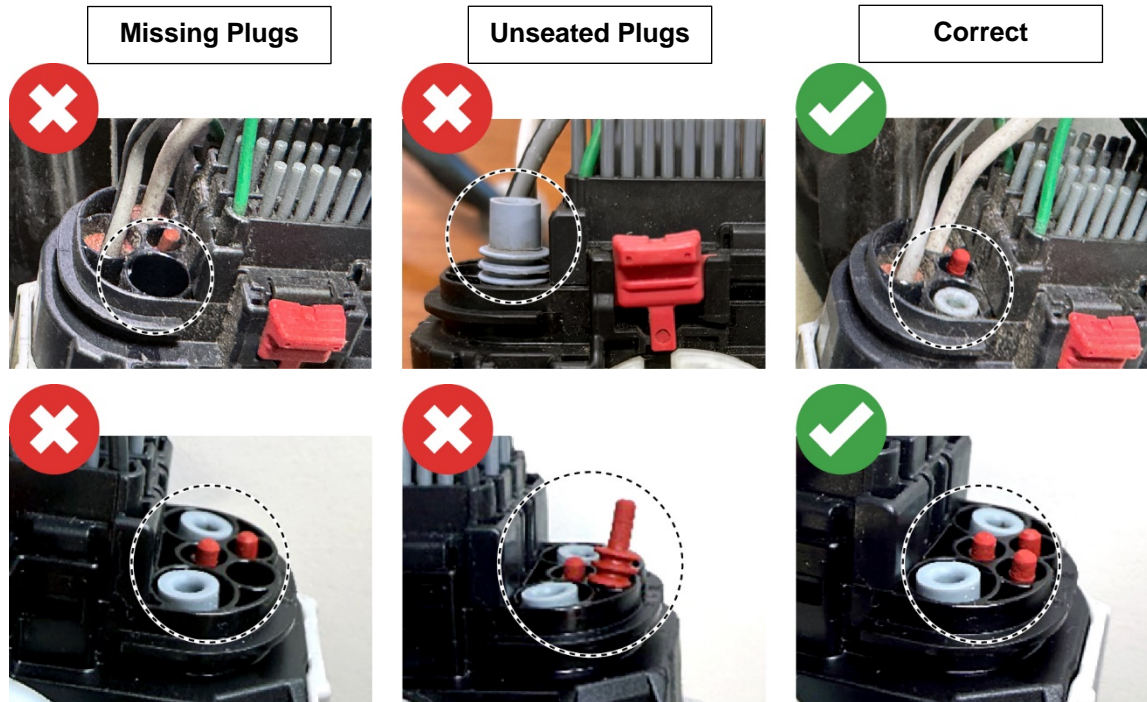


- 5.1 For the large and medium sized cavities that do not have wire terminals inserted, check that the gray or red cavity plugs are in place and fully seated. A fully seated cavity plug will sit below the body of the connector.



5.2 Inspect the large and medium cavity plugs for missing or fully unseated (all 3 ribs are visible) plugs.

Examples of missing or fully unseated cavity plugs:

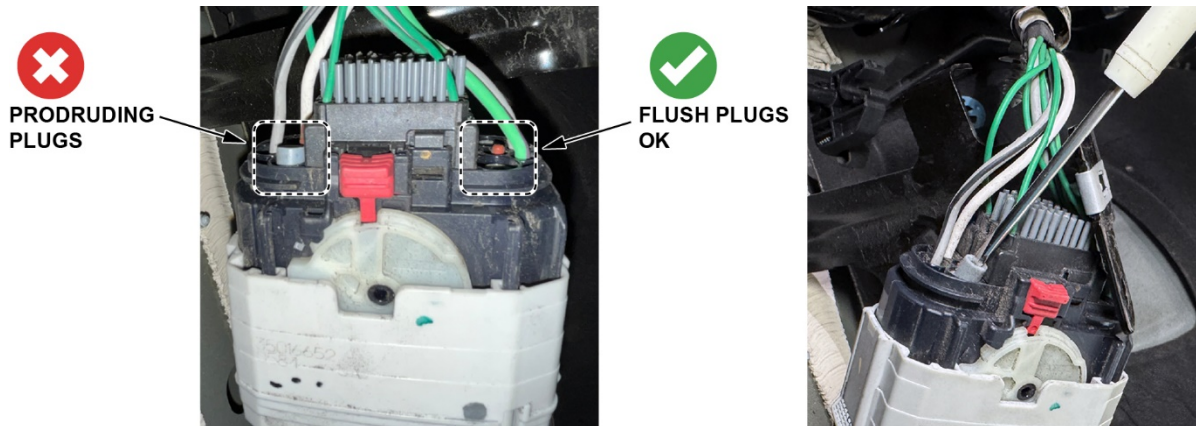


Are any cavity plugs missing or fully unseated with all 3 ribs visible?

YES – Proceed to step 6.

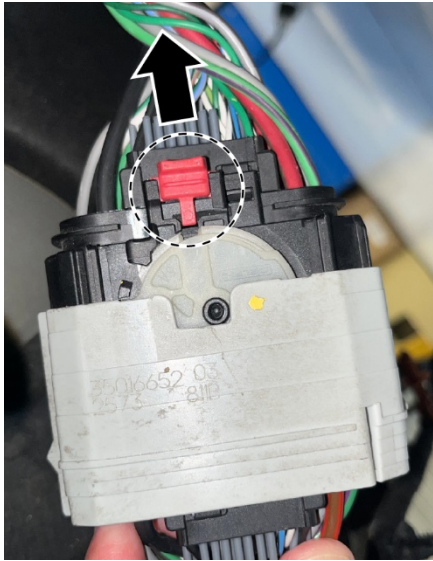
NO – Proceed to step 8.

NOTE: If the cavity plugs are in place but sitting above the connector (not fully seated), use a flat screwdriver and push the cavity plug in until it is fully seated and sitting below the connector.

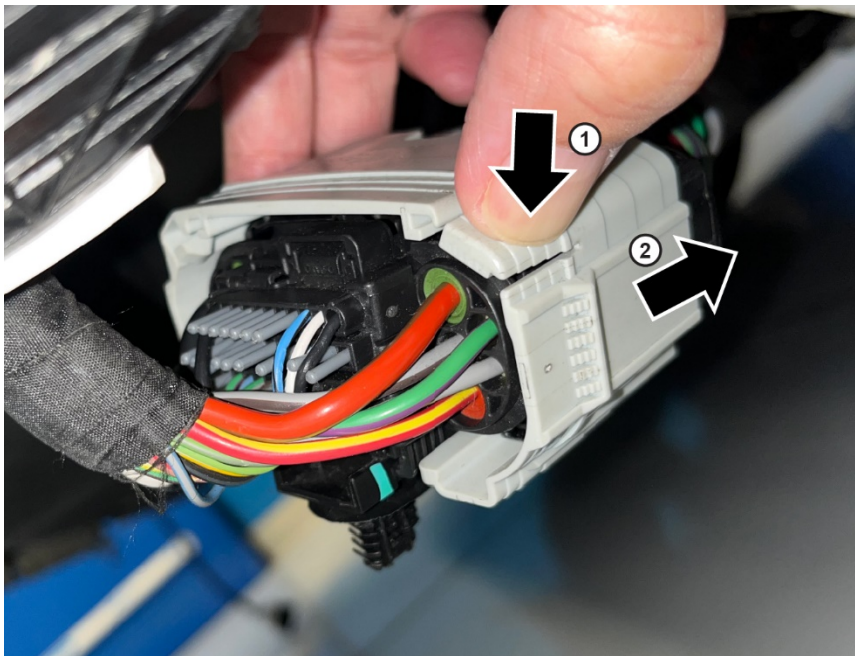


6. Since cavity plugs are missing or fully unseated, the connector terminals need to be Inspected for corrosion.

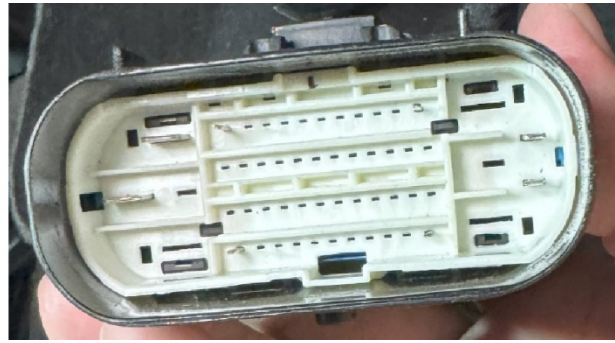
6.1 Slide the release lock to unlock the connector.



6.2 Press the release tab on the corner of the connector (1) to release the lock, then slide the outer case in the direction shown (2) to release the connector.



6.3 Inspect both connectors for corrosion on the connector terminals.



Is corrosion present on the connector terminals?

YES – Use electrical contact cleaner to remove the surface corrosion, then go to step 6.4.

NOTICE

Do not use brake or fuel system cleaners as they can damage the connectors.

NOTE: Corrosion on the body harness connector is not expected.

NO – Proceed to REPAIR PROCEDURE – *Missing Cavity Plugs*.

6.4 Was the corrosion successfully removed?

YES – Go to step 7.

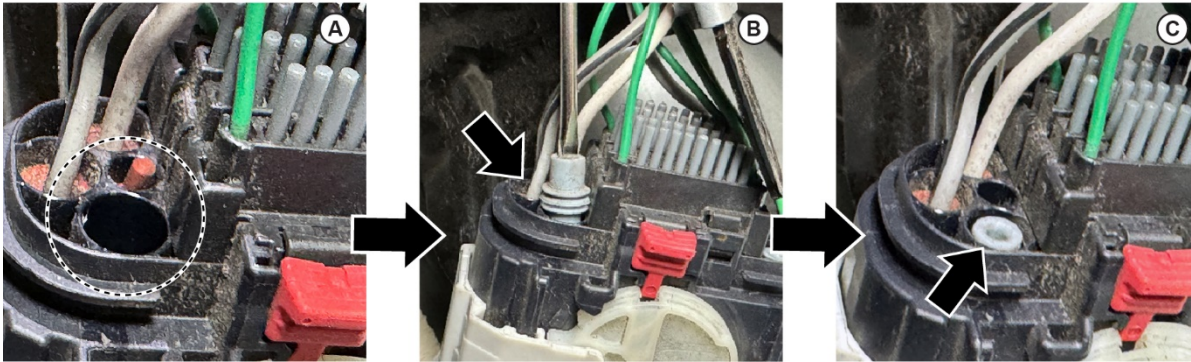
NO – Take detailed photos clearly showing presence of corrosion on one or both of the connectors. Then, go to PARTS INFORMATION to submit a request for the chassis harness, body harness, or both. Once the harness(es) request is approved and shipped, go to the BODY / CHASSIS HARNESS REPLACEMENT instructions.

7. Reconnect the chassis and body harness connectors.
8. Reattach the harness connectors to the mounting bracket.
9. Install the underbody rear air rear deflector – rear. Do steps 1–5 of the Installation Procedure in [Underbody Rear Air Rear Deflector – Rear](#).
10. Lower the vehicle.
11. Connect the 12-volt battery. See [Battery Negative Cable Disconnection and Connection](#).
12. Clear all DTCs.

REPAIR PROCEDURE

Missing Cavity Plugs

1. If any cavity plugs are **missing** from the connector body (A), use the appropriately sized cavity plug, large (gray) or medium (red), and insert it into the empty cavity of the connector body. Use a small flat screwdriver to insert the cavity plug fully into the connector body (B). Ensure the cavity plug is fully seated into the cavity and sitting below the connector body (C).



2. Reconnect the harness connectors and attach the harness connectors to their mounting bracket.
3. Reinstall the underbody rear air rear deflector - rear. Do steps 1–5 of the Installation Procedure in [Underbody Rear Air Rear Deflector – Rear](#).
4. Lower the vehicle.
5. Connect the 12-volt battery. See [Battery Negative Cable Disconnection and Connection](#).
6. Clear all DTCs.

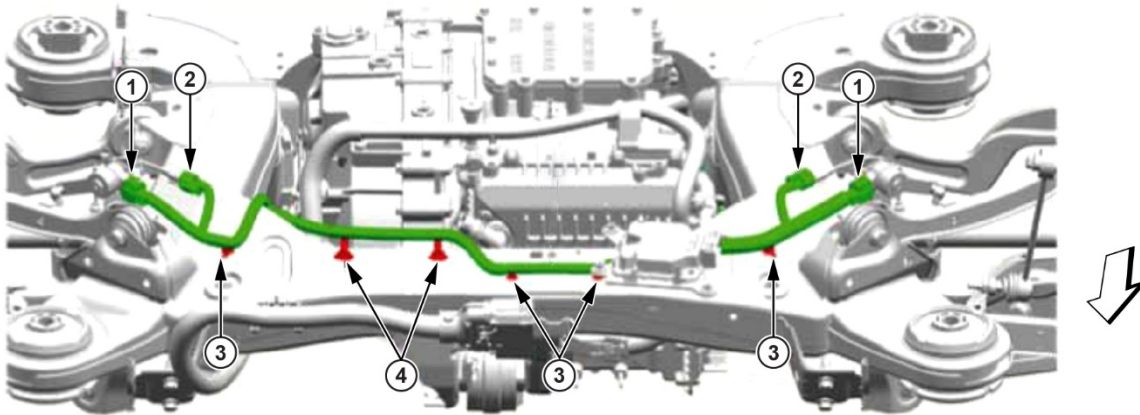
BODY / CHASSIS HARNESS REPLACEMENT

IMPORTANT: Complete the repair by following **all designated steps** in the referenced hyperlinks.

Replace the Chassis Harness

NOTE: Only replace the chassis harness if the corrosion on the chassis harness terminals cannot be removed with the electrical contact cleaner.

1. Before replacing the chassis harness, take clear photos of the corrosion on the chassis harness connector. These photos must be submitted with the warranty claim.
2. Remove the automatic forward lighting leveling position sensor connectors (1), then remove the rear wheel speed sensor connectors (2). Unclip the harness retainers (3, 4).



3. Install the new chassis harness in the reverse order of removal. Make sure the mounting clips are properly secured, and the connectors have all been reattached.
4. Reinstall the underbody rear air rear deflector - rear. Do steps 1–5 of the Installation Procedure in [Underbody Rear Air Rear Deflector – Rear](#).
5. Lower the vehicle.
6. Connect the 12-volt battery. See [Battery Negative Cable Disconnection and Connection](#).
7. Clear all DTCs.

Replace the Body Harness

NOTE:

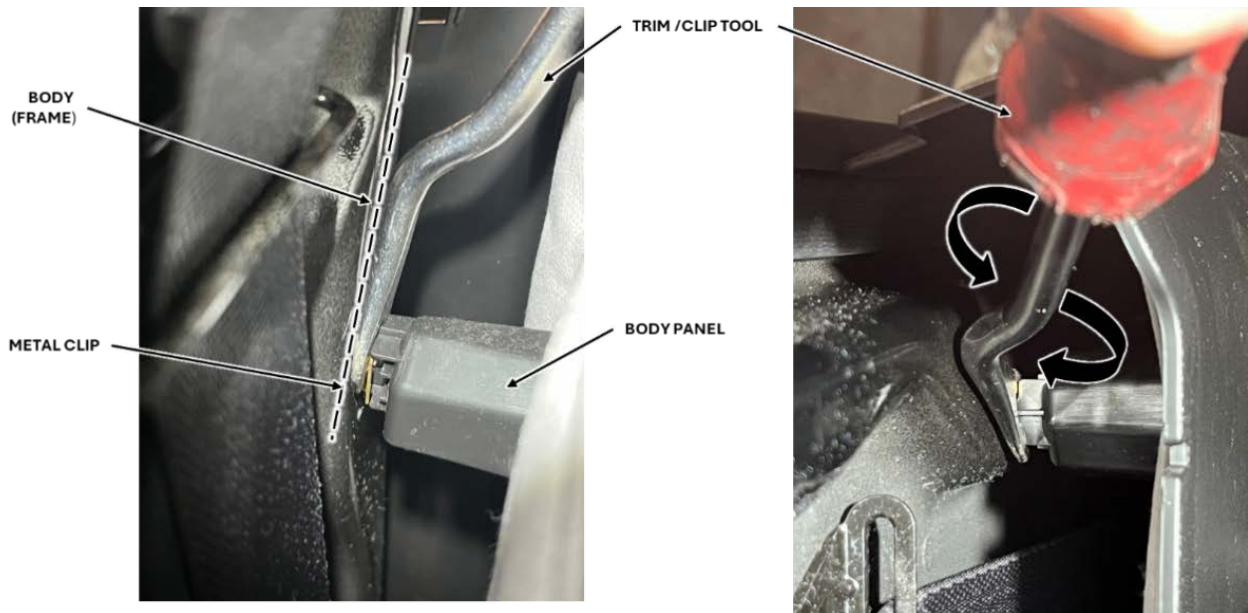
- Only replace the body harness if the corrosion on the body harness terminals cannot be removed with the electrical cleaner.
- Refer to PARTS INFORMATION for a list of parts that must be replaced during the body harness replacement.

NOTICE

- Interior trim panels are attached to the body structure using metal clips. Pulling on the panel can result in damaged parts.
- To reduce the risk of damaging the mounting clips or the panels, use a suitable trim/clip removal tool to release the clip from the body structure.

Panel Removal Tip:

1. Slide the trim/clip tool between where the trim panel is secured to the body structure.
2. Gently twist the trim/clip tool to release the metal clip from the body structure.



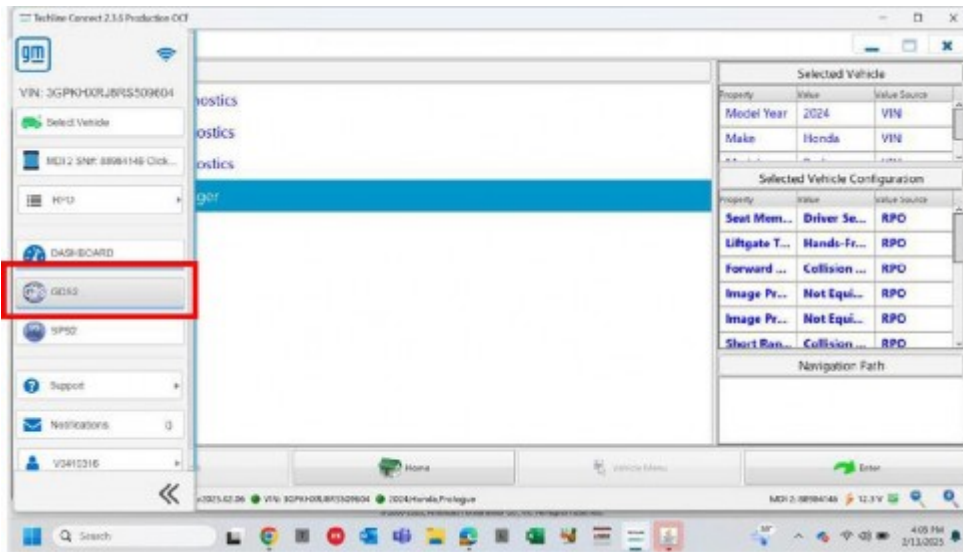
TIP: Make sure Techline Connect is up to date before proceeding with this repair.

1. Before replacing the body harness, take clear photos of the corrosion on the body harness connector. These photos must be submitted with the warranty claim.
2. Connect the 12-volt battery. See [Battery Negative Cable Disconnection and Connection](#).

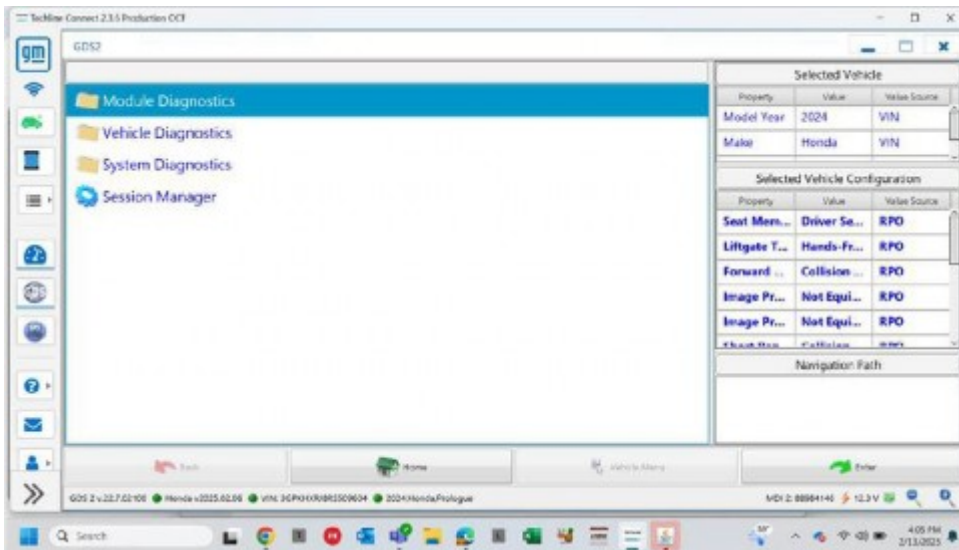
3. Recover the refrigerant.

3.1 Launch the Techline Connect service diagnostic tool to open the system valves. Select the K16 Battery Energy control module scan tool function.

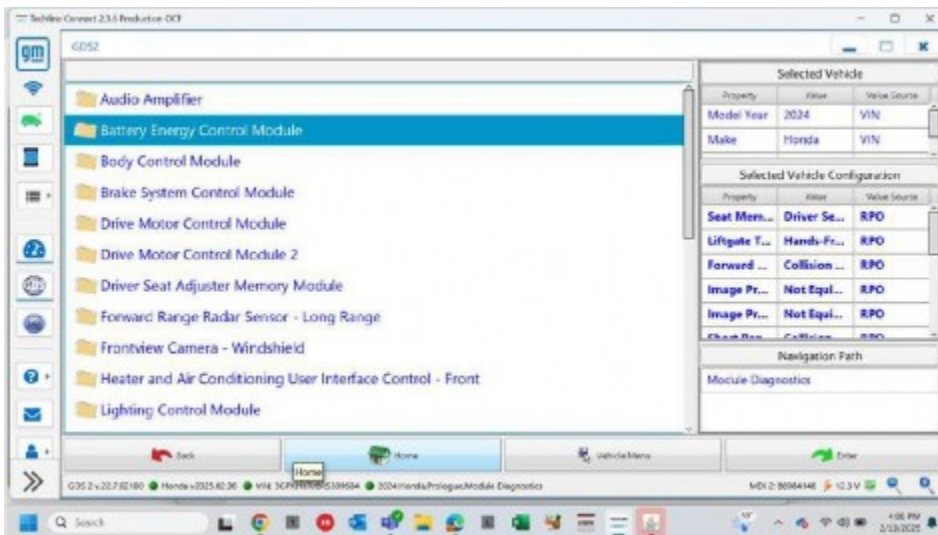
3.2 Select GDS2.



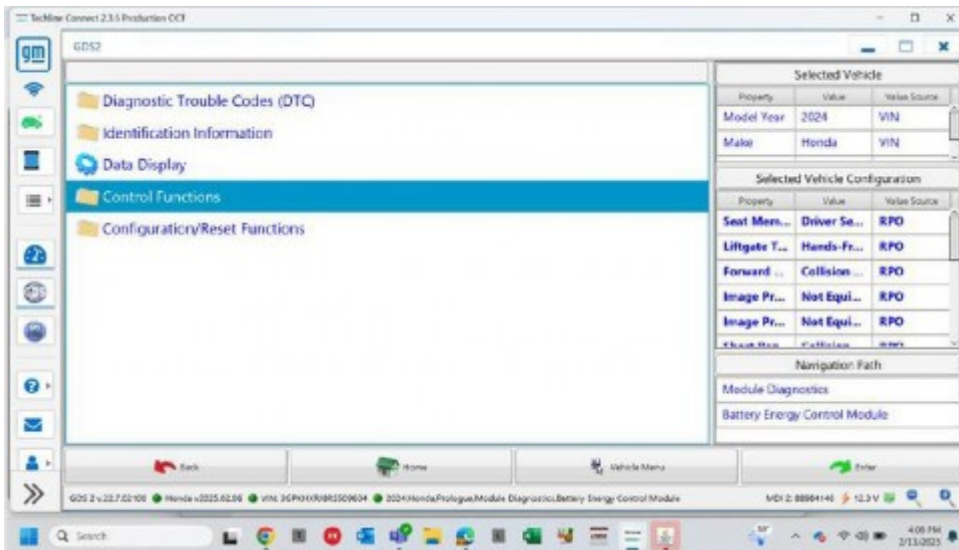
3.3 Select Module Diagnostics.



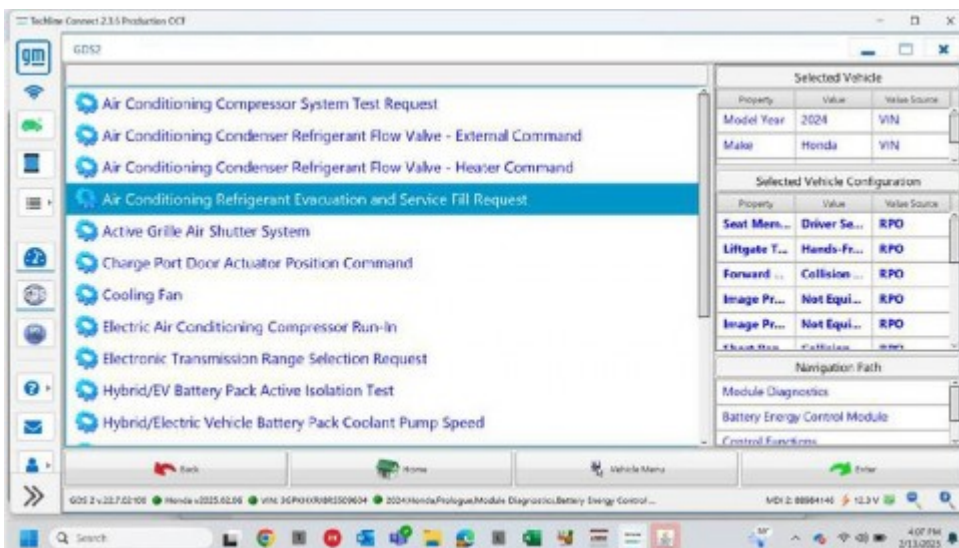
3.4 Select Battery Energy Control Module.



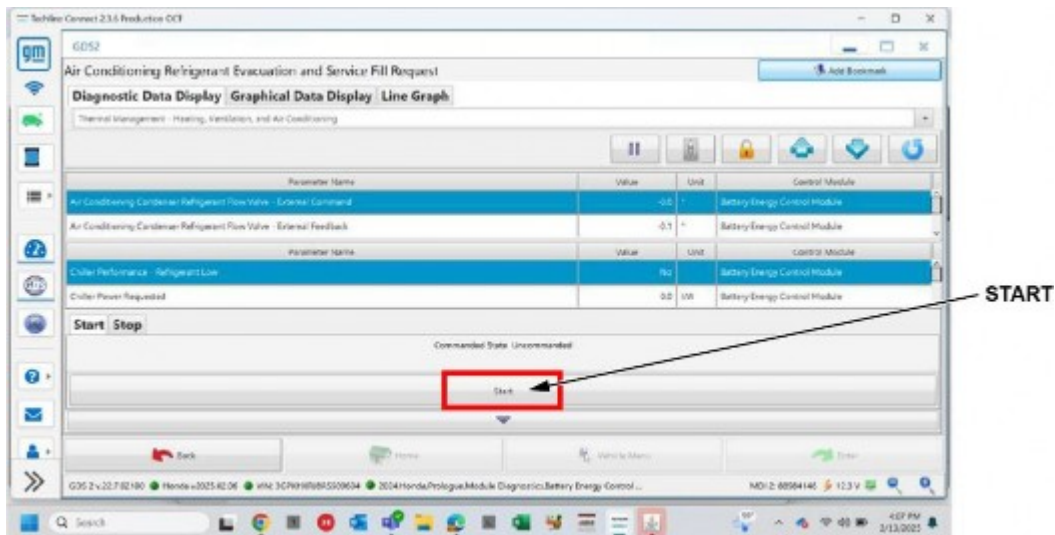
3.5 Select Control Functions.



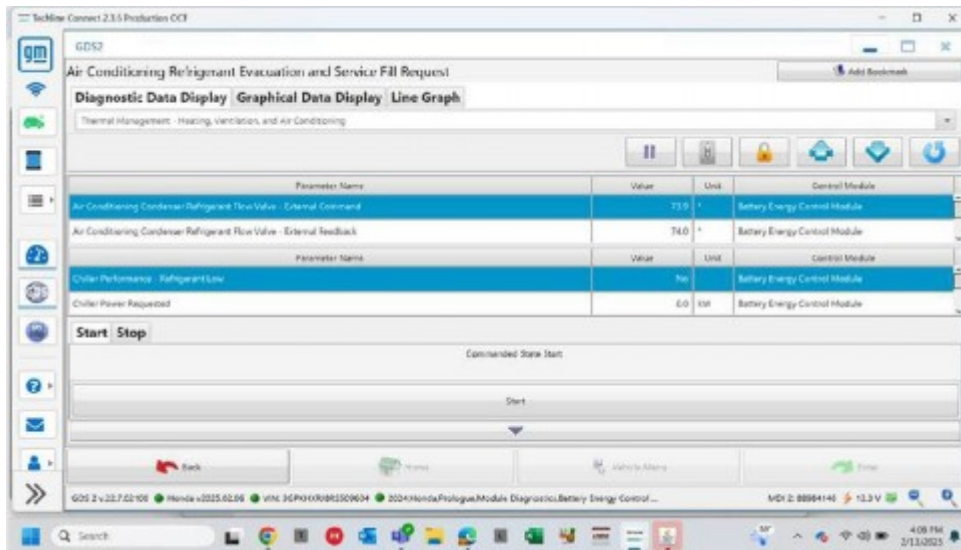
3.6 Select Air Conditioning Refrigerant Evacuation and Service Fill Request.



3.7 Select Start.



3.8 Once the valves are open, start recovering the refrigerant.



3.9 Recover the refrigerant using the Mahle machine only, (T/N RTIACX2282). For more information refer to [Refrigerant Recovery and Recharging](#).

NOTE:

- **Do not** use the Robinair Machine, it will not output the correct information for recovered POE oil.
- Record the exact amount of refrigerant oil recovered from the vehicle as the same amount of oil recovered will be needed to recharge the system. Revert to Job Aid [ZDX A/C Diagnosis and Leak Check](#).

4. Confirm all doors are unlocked.
5. Open the tailgate.
6. Unbolt the front seats, step 2 only in [Front Seat Removal and Installation](#).
NOTE: **Do not** disconnect the power seat harness connectors at this time.
7. Disable the SIR system. See [SIR Disabling and Enabling](#).
8. Disable the High Voltage system. See [High Voltage Disabling](#).
9. Remove the left side front floor panel carpet. See [Front Floor Panel Carpet Replacement – Left Side](#).
10. Remove the right side front floor panel carpet. See [Front Floor Panel Carpet Replacement – Right Side](#).
11. Remove the rear floor panel carpet. See [Rear Floor Panel Carpet Replacement](#).
12. Remove the left quarter lower rear trim panel. See [Quarter Lower Rear Trim Panel Replacement – Left Side](#).
13. Remove the right quarter lower rear trim panel. See [Quarter Lower Rear Trim Panel Replacement – Right Side](#).

14. Remove the headliner. See [Headlining Trim Panel Replacement](#).
15. Remove the turn signal switch. See [Turn Signal Switch Replacement](#).

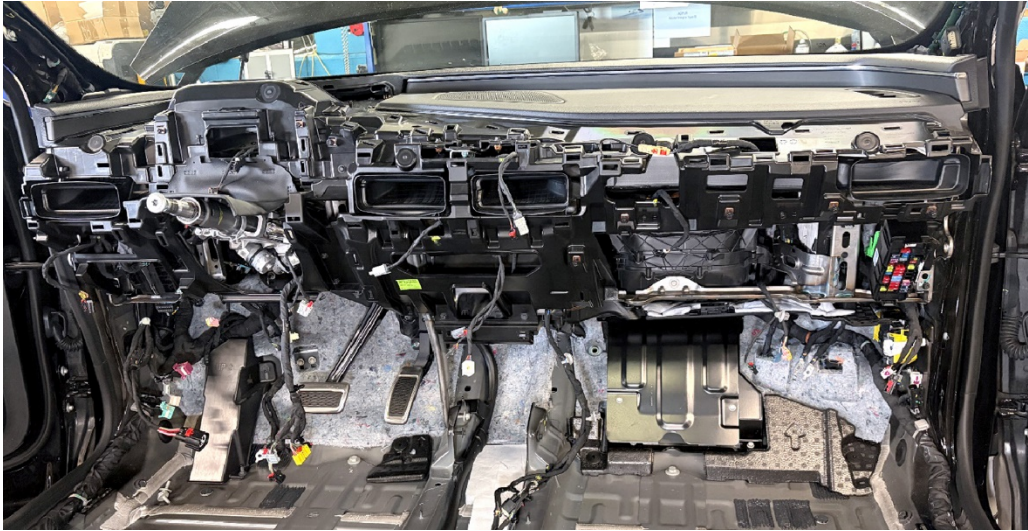
NOTICE

During the removal of the turn signal switch, there are two spring tabs securing the turn signal switch to the steering column. Gently pry the spring tabs until the turn signal switch releases from the steering column with light pressure. Excessive pressure can break the spring tabs. If the tabs break the turn signal switch must be replaced.



16. Disconnect the refrigerant lines from the evaporator and remove the evaporator and blower module mounting bolts, do steps 6 – 9 in [Heater and Air Conditioning Evaporator and Blower Module Removal and Installation](#).
17. Remove the instrument panel See [Instrument Panel Removal and Installation](#).
 - 17.1 Do steps 3 – 26.
NOTE: **Do not** do steps 27-28, seats should already be removed.
 - 17.2 Do steps 29 – 66.
NOTE: **Do not** do steps 67-78, instrument panel will be removed as an assembly.
 - 17.3 Do steps 79 – 98.
NOTE: **Do not** do step 99, instrument panel will be removed as an assembly.
 - 17.4 Do steps 100 – 113.

- 17.5 With the aid of an assistant, lift the instrument panel assembly up and rearward to release the assembly off the locating pins, then remove it from the vehicle.

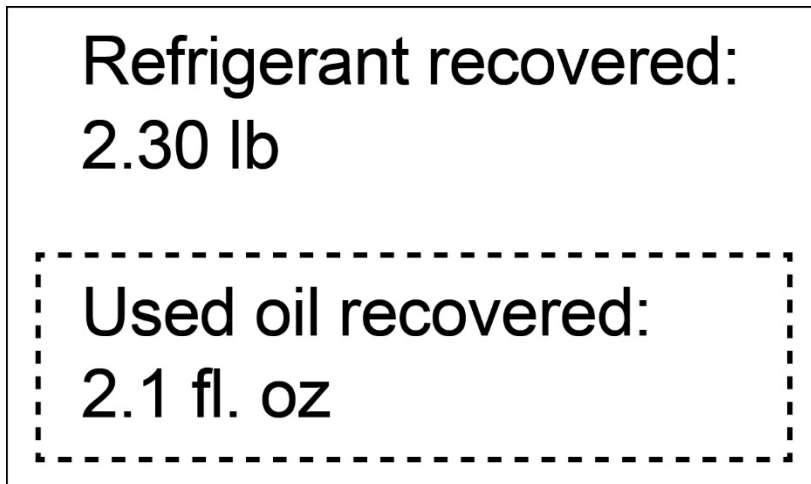


18. Remove the front underbody rear air rear deflector. See [Underbody Rear Air Rear Deflector Replacement – Front](#).
19. Remove the middle underbody rear air rear deflector. See [Underbody Rear Air Rear Deflector Replacement – Middle](#).
20. Remove the rear underbody rear air rear deflector. See [Underbody Rear Air Rear Deflector Replacement – Rear](#).
21. Remove the stop lamp assemblies. See [Rear Body Structure Stop Lamp Replacement](#).
22. Remove the headlamp assemblies. See [Front Headlamp Replacement](#).
23. Remove the radiator upper air baffle and front bumper energy absorber, do steps 5 – 8 in [Front Bumper Shutter Replacement](#).
24. Remove the battery tray. See [Battery Tray Replacement](#).
25. Remove the body wiring harness. Use [Harness Routing Views](#) as a reference.
- TIPS:
- Before removing the wiring harness, take photos to use as a reference during the new wiring harness installation.
 - Marking the old harness before removal can help as a reference with proper harness location during assembly.
26. Install the new body wiring harness.
27. Replace the receiver dehydrator,
- All Wheel Drive: See [Air Conditioning Receiver and Dehydrator Replacement](#).
 - Rear Wheel Drive: See [Air Conditioning Receiver and Dehydrator Replacement](#)
28. Reinstall the remaining parts in the reverse order of removal.

29. Connect the 12-volt battery. See [Battery Negative Cable Disconnection and Connection](#).

30. Recharge the refrigerant:

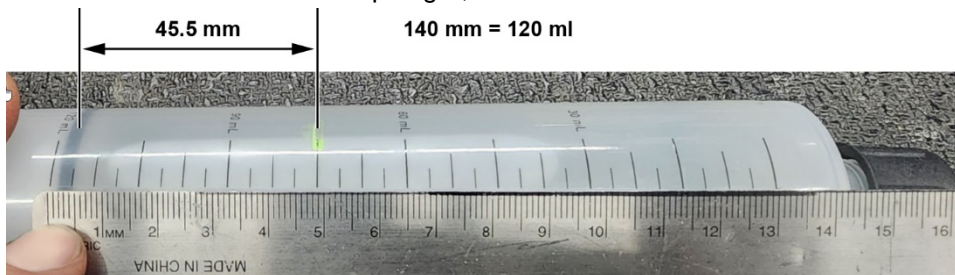
30.1 Use the printout from the Mahle machine to determine how much oil to install.



30.2 Current POE bottles do not have level markings to measure fluid. Use an oil injector and calculate how much oil to install.

Example: If the system needs **39 mL (1.32 oz)**, (if your oil measurement is in ounces (oz) convert oz to mL).

- **39 mL x 140 mm = 5460**
- **5460 / 120 mL = 45.5 mm**
- Measure **45.5 mm** from the plunger, which is **39 mL**



30.3 Launch the Techline Connect service diagnostic tool to open the system valves.

30.4 Follow the instructions on the Mahle machine screen prompts to add the POE oil and refrigerant back into the system.

NOTE:

- Use the A/C Oil Injector (T/N 07-J-45037) with the R-1234yf A/C Oil Injector Hose (T/N 07-GE-50745).
- **Do not** use the Honda R-1234yf POE Oil Injector Hose.
- For more information, refer to [Refrigerant Recovery and Recharging](#).

31. Install the underbody rear air rear deflector – rear. Do steps 1–5 of the Installation Procedure in [Underbody Rear Air Rear Deflector – Rear](#).

32. Reprogram the rear gate control module, do steps 1-3 in Reprogram Control Module in [K194 Rear Gate Module: Programming and Setup](#)

33. Clear all DTCs.

34. Do the liftgate relearn if required. See [Liftgate Calibration](#).

35. Check that the electrical features are operating properly.