		<h1 style="text-align: center;">MODEL Z BED PLATFORM REPAIR AND CONDENSATION VENT INSTALLATION</h1>			3	4 3 2 1 0 Difficulty Level
WI:	WI-001-2024 Model Z Bed Platform Repair and Vent Installation					
PRODUCT:	Model Z	VIN Range:	000001 - Current	REVISION:	REV-B	
DATE:	March 30, 2026	LABOR RATE:	2.0 Hours / 3.0 Hours with Vent Installation			

**Bed Platform Repairs:**

In certain Model Z fifth wheels, Brinkley RV has determined there may be an issue with placement of the bedroom slide-out rollers on the bedroom floor. The positioning of the roller is such that it may cause damage to the bottom of the lower side panels of the bed platform. Brinkley RV will cover the costs to perform this repair. The following are detailed instructions for the procedure.

**SAFETY:**

Service, repair and installation instructions are written specifically for the use of professionally trained technicians, using proper tools in a shop environment. For safety, and to ensure the best results, **only professionally trained technicians** should perform the work described in this document.

Safety is, and should always be observed when performing any type of repair. ANSI (American National Standards Institute) has created a standardized labeling system for different levels of safety and danger. The labels below provide information regarding those levels of danger, and should be observed and adhered to at all times.

**⚠ DANGER**

This indicates an imminent hazard that, if not avoided or handled correctly, will result in death or serious injury.

**⚠ WARNING**

The “WARNING” symbol above is a sign that a procedure has a safety risk involved and may cause death, serious personal injury, severe product and/or property damage if not performed safely and within the parameters set forth in this document.

**⚠ CAUTION**

The “CAUTION” symbol above is a sign that a procedure has a safety risk involved and may cause personal injury, product and/or property damage if not performed safely and within the parameters set forth in this document.

**+ NOTICE**

The “NOTICE” banner above is used to address best practices that should be utilized and do not commonly result in injury but may lead to property damage if not careful.

Model Z Bed Base Parts Kit K109182

Model Z Bed Base Parts Kit K109182		
Part Number	Description	Qty
100275	LAUAN 3.6MM 48 X 96 MINDFUL GRAY OVL MERANTI	.5
100650	ADHESIVE CHEM X PRO 10 OZ CAR BLACK	1
106141	WHITE SILICONE	1

Bed Base Condensation Venting Kit K110365		
Part Number	Description	Qty
101633	VENT	2
119851	PINK INSULATION	10'
106141	SEALANT	2
101356	FASTENER SCREW 8 X 3/4 BLACK PAN QUAD	8

Required Tools

1. Measuring Tape
2. Screw gun with #2 square drive bit
3. Oscillating Multi-Tool
4. Pin Nailer
5. Flat head screw driver
6. Adhesive Gun
7. Side Cutters
8. Chisel
9. Prying Tool

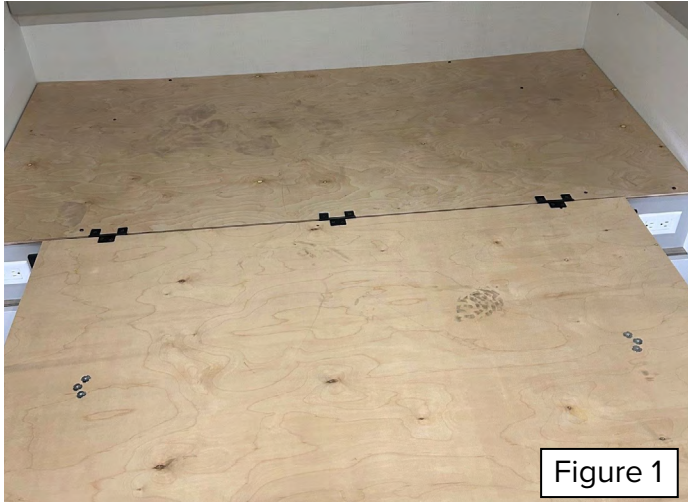


**⚠ CAUTION**

Always wear Personal Protection Equipment (PPE), such as eye protection, ear protection, gloves and possibly a full face shield depending on the nature of the task to be performed.

## WORK INSTRUCTIONS:

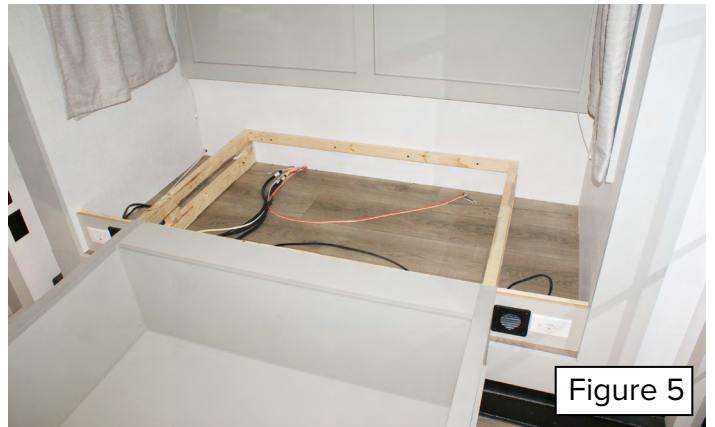
1. **READ AND UNDERSTAND ALL INSTRUCTIONS PRIOR TO BEGINNING WORK.**
2. Remove mattress from the platform and bedroom (Figure 1).
3. Using a screw gun and a #2 square drive bit, remove the fasteners and platform support strut bracket from the bed base. Set fasteners aside.



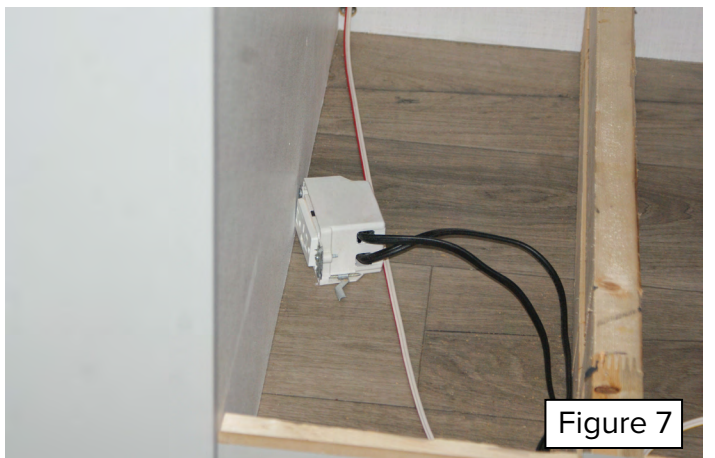
4. Remove hinged bed platform from bed frame by removing fasteners from hinges (Figure 3a and Figure 3b). Set fasteners and hinged bed platform aside.



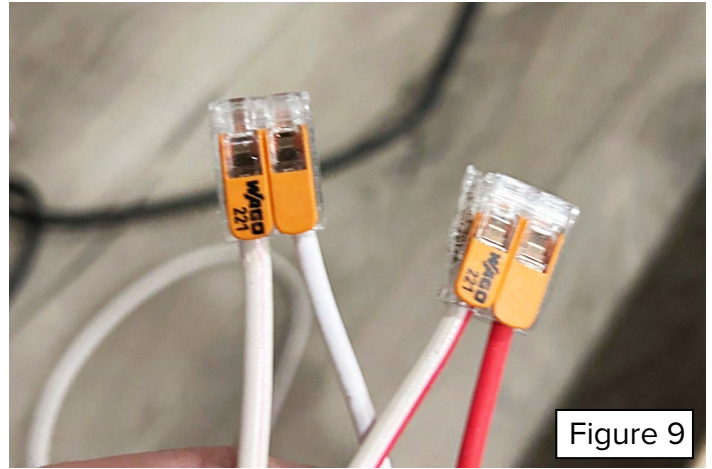
5. Remove all of the fasteners holding the fixed bed platform panel and set aside (Figure 4).
6. Remove fixed bed platform and set aside (Figure 5).



7. Using a flat head screwdriver, remove the two fasteners (2) holding each bedside recept in place. Set fasteners aside (Figure 6). Repeat for both sides.
8. Push the recepts back through the openings (Figure 7).



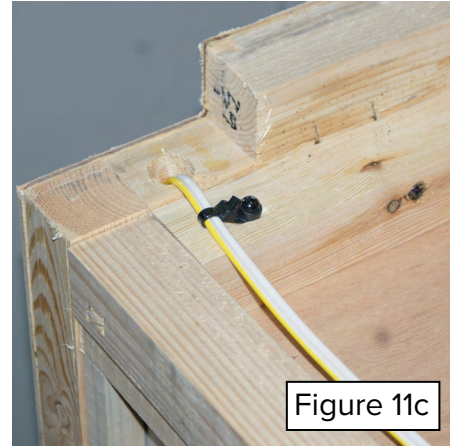
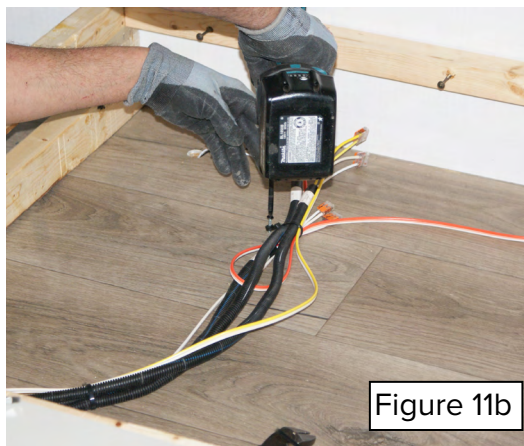
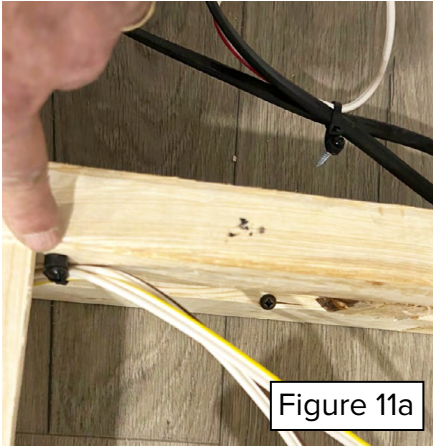
- In preparation for wiring disconnections, take photographs of the wiring connections in the bed base (Figure 8).
- Disconnect the wiring to the bed platform floor lights and motion sensors at the Wago connectors (Figure 9).



- Use a screw gun with a #2 square bit to remove the fasteners holding the bed frame to the slide out structure. Retain the fasteners (Figure 10a and Figure 10b). Note that some fasteners go through the back of the frame into the wall, and others are toe-screwed down into the slide out structure.



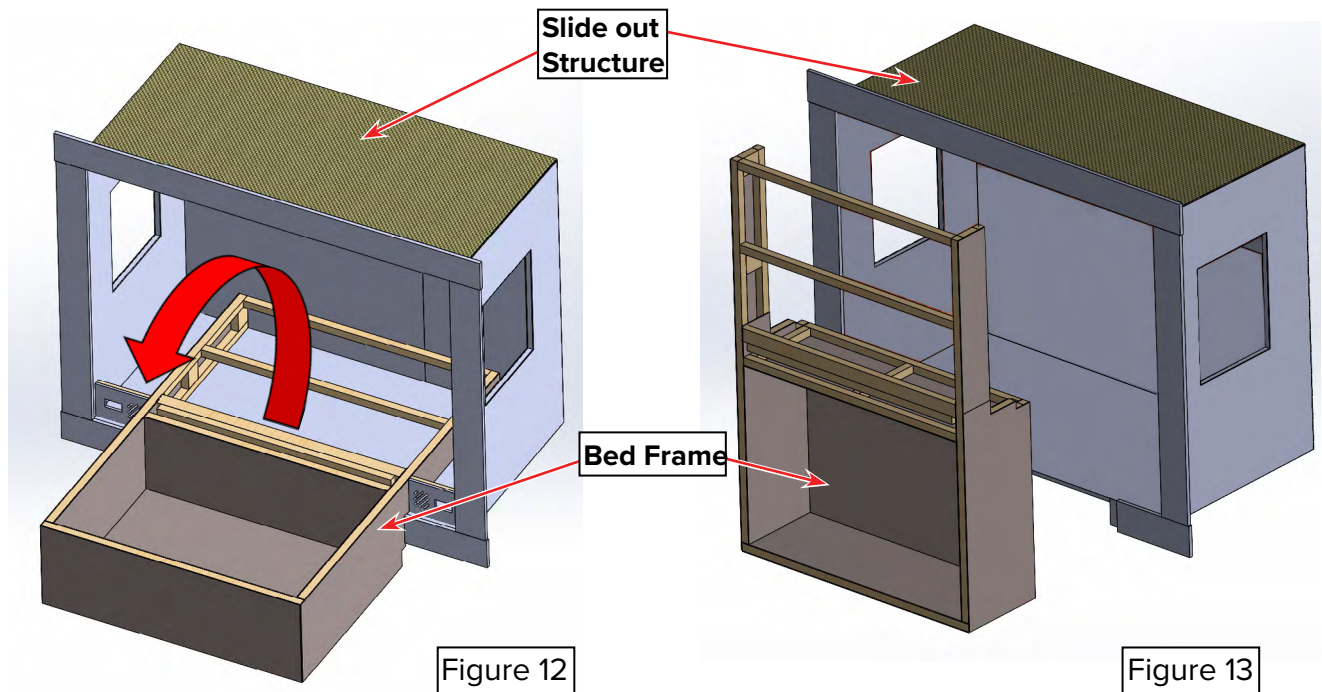
12. Cut or unscrew wire ties holding wiring in place to allow free movement of the wires (Figure 11a, Figure 11b and Figure 11c).



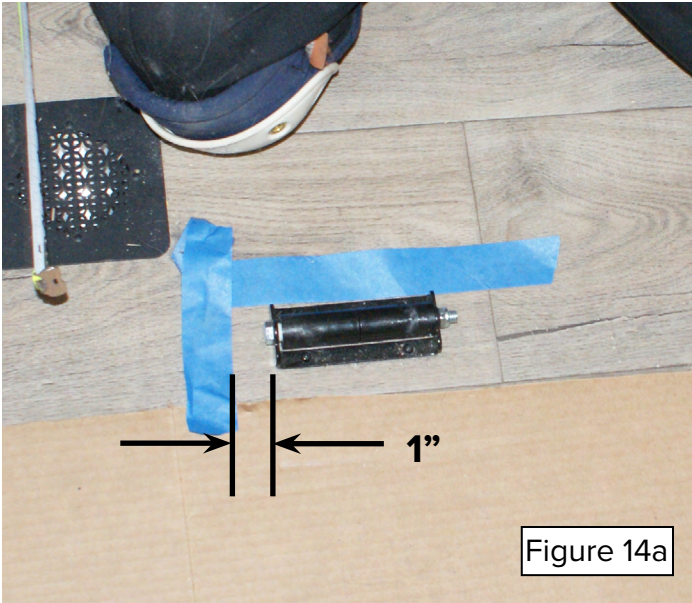
### ⚠ CAUTION

Before performing the next steps, cover the bedroom floor where the bed base will rest with a protective covering like cardboard, fabric, etc. to prevent damage to the floor once the bed frame and base are rotated onto the floor to access the rollers.

13. Once the wiring for the bed base floor lights and motion sensors have been disconnected, and the bed frame is free from the walls and structure of the slide out, rotate the bed 90 °and place the base face-down on the end on top of the cardboard protecting the floor (Figure 12 and Figure 13).



14. Place tape on the floor beside one roller. Measure 1" outboard of the roller and place another piece of tape on the floor (Figure 14a).
15. Remove the four (4) fasteners and reposition the rollers 1" outboard to the tape line.
16. Secure roller into position using four (4) original fasteners (Figure 14b).
17. Repeat for both sides moving rollers outboard 1" from original positions.



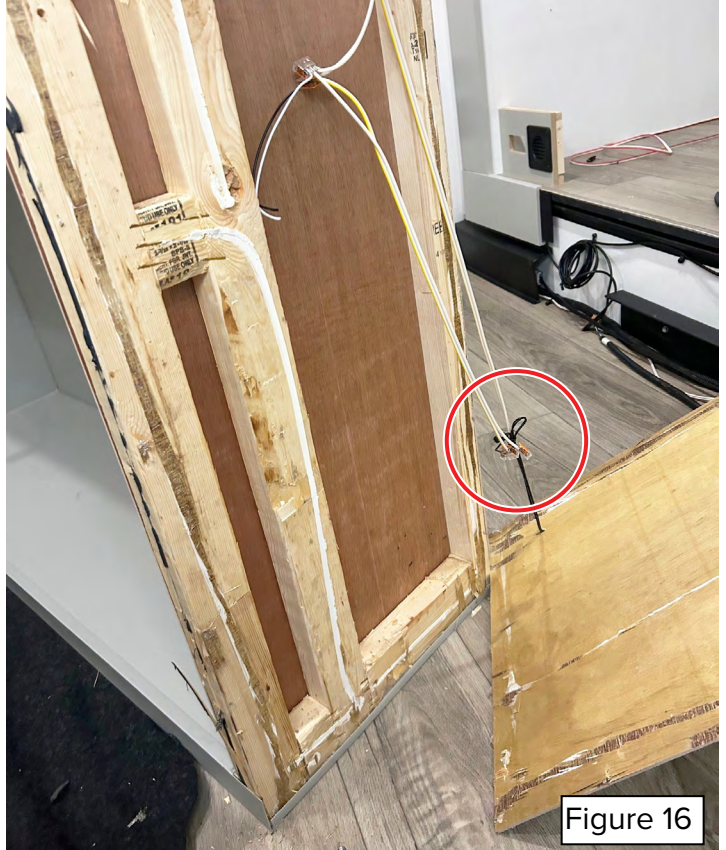
**If the lower panels of the bed frame ARE NOT DAMAGED**, and do not need replacing, proceed ahead to **step #26**. **If the lower panels of the bed frame are damaged**, continue with instructions to replace them.

## REPLACING DAMAGED BED BASE PANELS

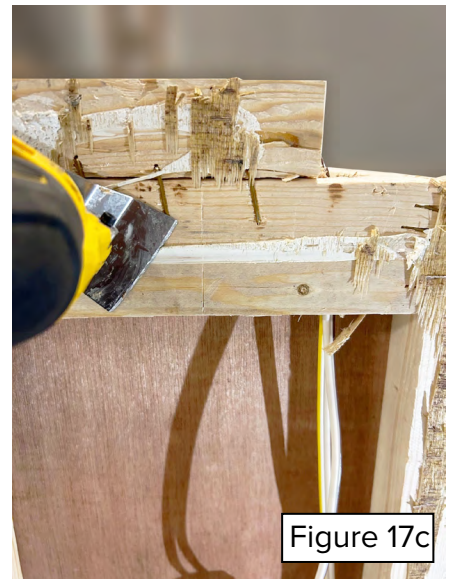
### ⚠ CAUTION

The process of removing the panels from the wood structure of the bed base can generate broken panels and splintered wood. Wear protective clothing and safety equipment to prevent injury.

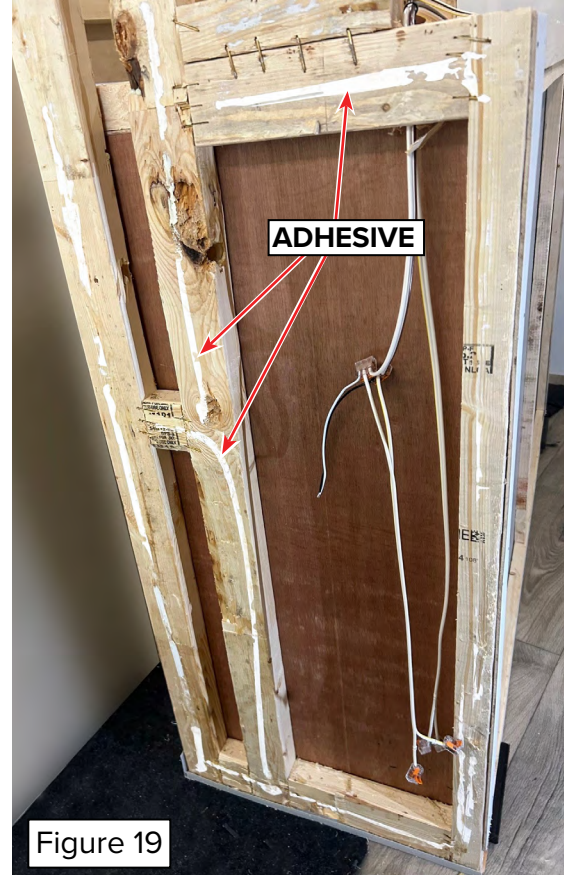
18. Remove any damaged panels from the bed base by prying them loose from the wood structure (Figure 15).
19. Once the panel is loose, you will have access to the wiring on the back side. Disconnect the wiring to the light and motion sensor at the WAGO connections and remove the panel (Figure 16).



20. Use hand-held cutters and an oscillating multi-tool with a cutting blade to remove any large splintering and clean the old adhesive off of the bed base structure (Figures 17a, 17b and 17c).



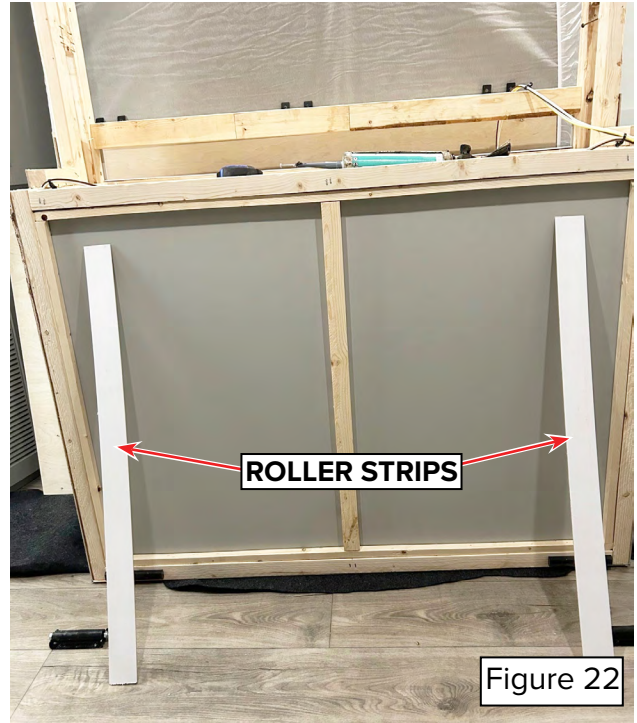
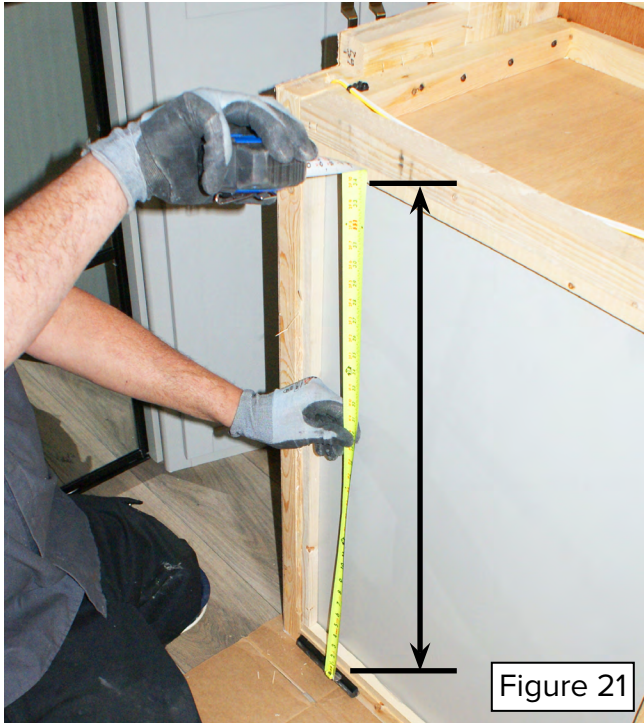
21. Lay the old panel over the new panel and mark the cuts to be made on the new panel (Figure 18).
22. Cut the panel and prepare for installation by drilling 1/4" holes in the panel to route the wires for the floor LED lights and the motion sensor (not shown).
23. Install the LED floor light and motion sensor on the panel, routing the wires through the hole in the panel and connecting them to the existing wiring in the bed base (not shown).
24. Apply adhesive to the bed base structure where the new panel will be applied (Figure 19).



25. Install new panel (with light and motion sensor installed) on the lower panel (Figure 20).



26. On the bottom of the bed structure, measure up from the top of the bracket to the top of the bed base to determine the length of the roller run (Figure 21) .
27. Cut strips of panel material 1.5” wide and to the length of the measurement above (Figure 22). The strips can be cut from the old panel if needed.



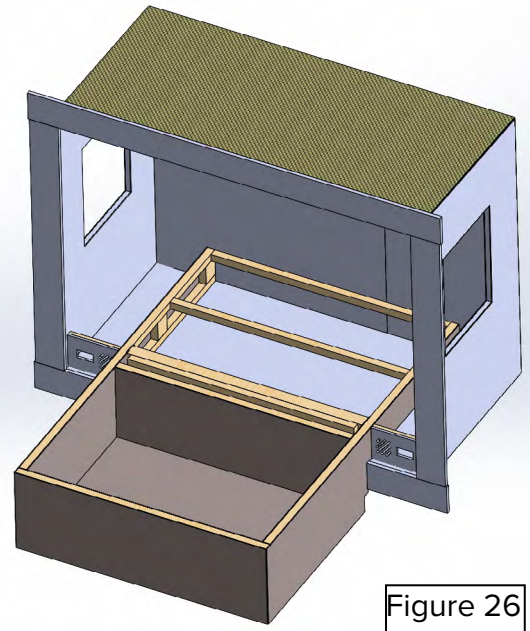
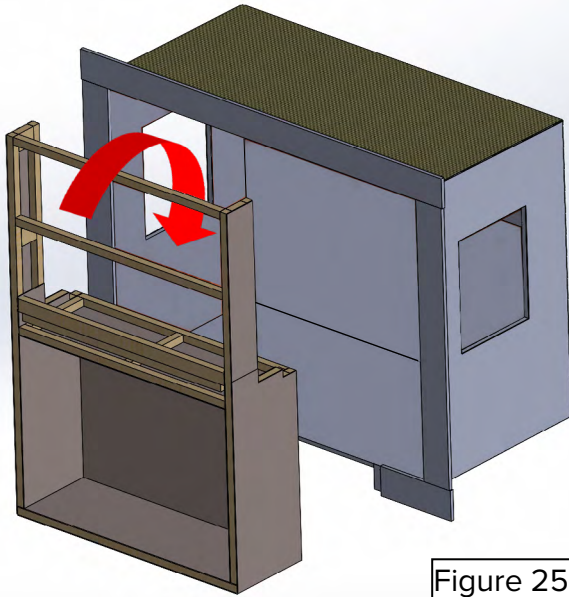
28. Apply Chem-Pro adhesive to the bed base where the rollers will ride (Figure 23).
29. Fasten the roller runs on the bed base using pin nails (Figure 24).



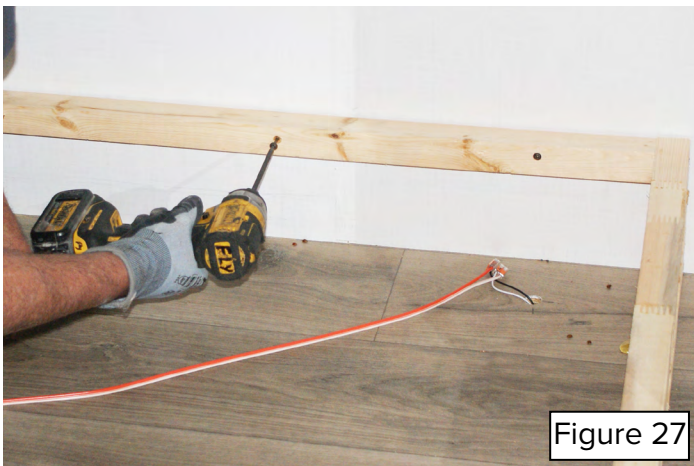
**⚠ CAUTION**

Use caution not to pinch, pull or break any wires as you install the bed frame back into the slide out structure. Take the time to route the wires through existing holes and openings to keep tension off of them, and secure the wires with screw-down zip ties once in place to prevent wires from moving and chaffing.

30. Rotate the bed frame back into place, being careful not to pinch, pull or break any wires as you ease the bed frame back into the slide out structure (Figure 25 and Figure 26). Be certain the bed frame is seated properly on the slide out structure and completely against the back wall.



31. Use a screw gun and #2 square drive bit with the original fasteners to attach the bed frame to the slide out structure (Figure 27 and Figure 28).



32. Using the existing WAGO connectors, connect the slide out wiring to the bed platform wiring per the photos previously taken. Test lights and motion sensors for proper operation (Figure 29).
33. Secure the wiring to the slide out and bed structure using screw down zip ties to prevent the wiring from moving and potentially chaffing, pinching or cutting (Figure 30).

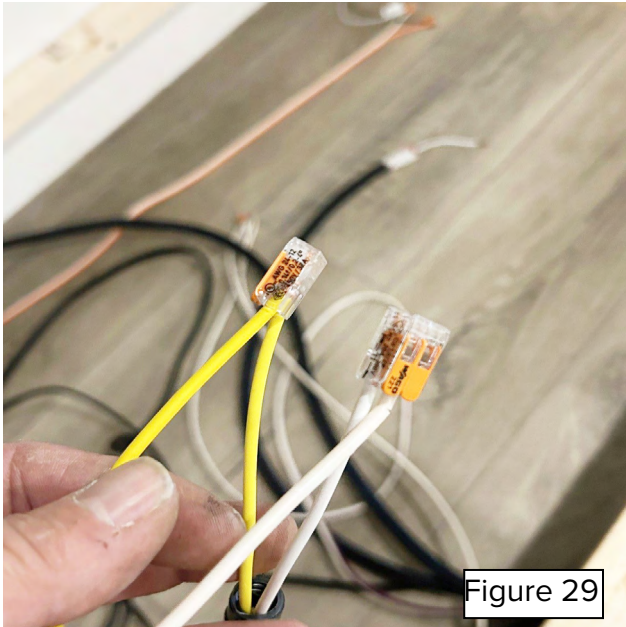


Figure 29

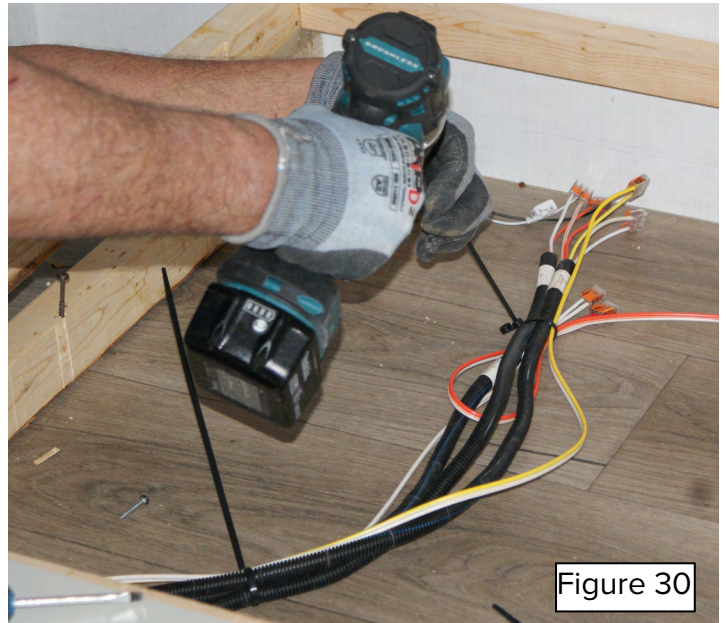


Figure 30



If the bed platform on the slide out has vents and insulation to prevent condensation, proceed to step #38. If the vents **HAVE NOT** been installed and the insulation **HAS NOT BEEN** added, continue to the next step (#34).

34. Using a power drill and 2" hole saw, bore a hole inboard of the 110 VAC recept in the side panels of the slide out platform. Install a vent cover over the hole using four (4) x/x" screws. (Figure 31). Repeat for both sides.
35. Install 110 VAC recepts into the side panels of the slide out platform. (Figure 32).

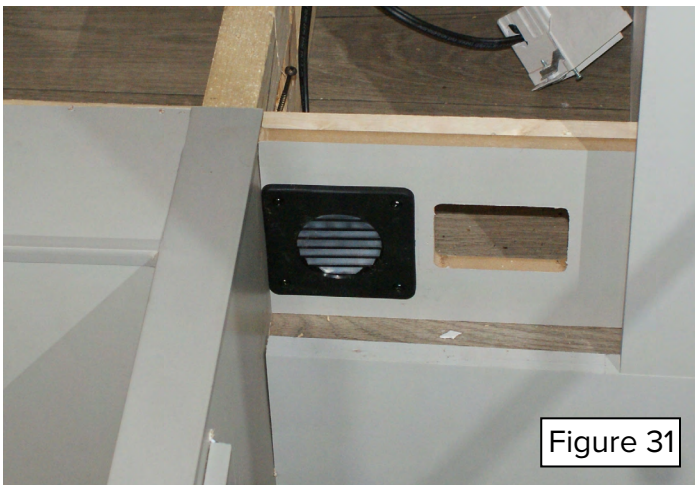


Figure 31



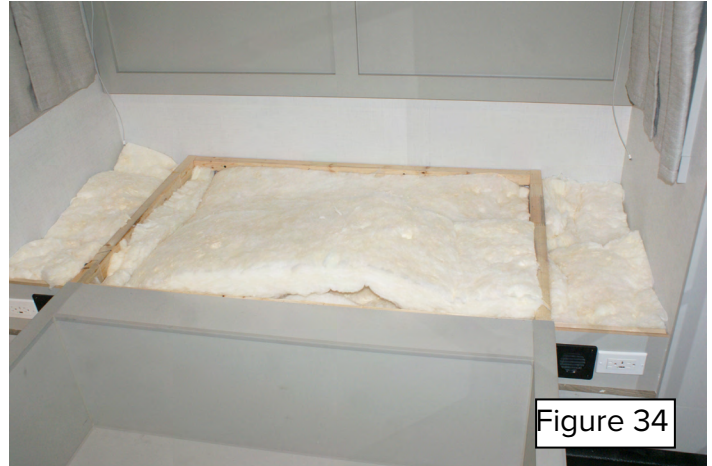
Figure 32

**⚠ CAUTION**

Use caution when installing insulation. Different types of insulation provide different levels of hazard to the installer. Wear PPE that is designed for use with the insulation you are installing.

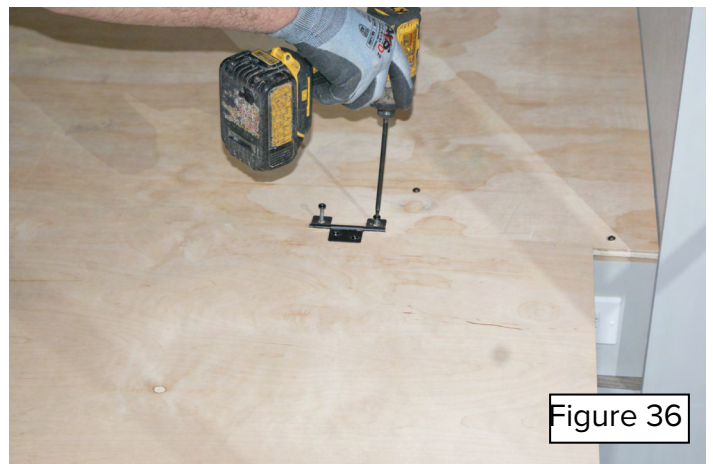
36. Install insulation on the bedroom slide out deck. Start by tucking insulation into the cavity at the front edge of the slide out platform(Figure 33).

37. Complete insulation installation by filling all the spaces, gaps and voids in the slide out platform (Figure 34).



38. Using a screw gun and #2 square drive bit, install the slide out bed platform cover using the original fasteners (Figure 34).

39. Install the hinged bed platform lid (Figure 35) via the hinges using the original fasteners (Figure 36).



40. Attach the lift shocks into place and attach the brackets to the tops of the slide out storage base using the original hardware (Figure 37).
41. Test the operation of the bed slide out and all lights and accessories associated with it (Figure 38).

