

TECHNICAL SERVICE BULLETIN, VIN: SB-80 GH1 Audio System Remote Wire

June 12, 2026

Dear Tiffin Motorhome Owner,

It has come to our attention that on certain 2026 & 2027 GH1 Motorhomes, the audio system is wired to the chassis batteries. This wiring setup has a 1 amp draw that may drain the chassis battery within 1 week if the motorhome is not regularly driven. Tiffin Motorhomes will install a new harness to move the power wire to the ignition so that the radio only has power when the ignition is on.

Please take your motorhome to a service center of your choice to have the correction completed. This repair should take **45 minutes** or less and will be completed at no charge to you.

A list of Tiffin Motorhomes authorized dealers is available online at <https://tiffinmotorhomes.com/service-center-locations>. If you are using a service center that is not a Tiffin Motorhomes authorized repair facility, please make sure that they contact Tiffin Motorhomes at 256-356-0261 or service@tiffinmotorhomes.com for the required instructions and time allowed for the repair. Tiffin Motorhomes will not pay over the allowed time unless the repair facility receives prior authorization. For authorization, contact Tiffin Motorhomes at 256-356-0261 or service@tiffinmotorhomes.com.

This technical service bulletin will expire August 1, 2027. Please make sure that the repair is completed prior to this date. Work completed after this date will be done at the customer's expense.

You may be liable for any progressive damage that results from your failure to complete this technical service bulletin within a reasonable time after receiving notification.

We regret any inconvenience this action may cause but feel certain you understand our interest in your continued use and enjoyment of your coach.

Tiffin Motorhomes Compliance Department

Technical Service Bulletin SB-80 Repair Instructions

Models Involved: 2026 GH1 1UP Motorhomes and 2027 GH1 19 AV Motorhomes

Purpose: To add an audio system remote wire to ignition. This will remove a 1 amp draw that drains chassis battery within a week.

FLAT RATE CODE & TIME ALLOWED *To file the warranty claim for payment, please use the following flat rate code.*

Repaired - 9980SB00 for 0.75 hours.

No additional authorization is needed for work completed at the flat-rate times stated on the work instructions.

Use **"SB-80"** as the authorization on claim for payment.

Tools needed:

Wire Stripper/Crimper
Torque Wrench capable of 29ft-lbs
E12 Socket
5/32 Allen Wrench
2 mm Allen Wrench

Parts Needed:

1 of 5191843 Jumper Audio Sub/Amp
2 of 5152028 Harness JMPR 1 BUTT TO 2 BUTT 14GA

Repair Instructions

1. Remove drivers' seat using the E12 socket to access modules located beneath the seat.
2. Roll floor mat back to access the seat pass throughs, carefully pulling the center floor mat from under the other mats and avoiding the emergency brake handle.



Figure 1

3. Pass part #5191843 Jumper Audio Sub/Amp from passenger seat to driver seat.
 - Leave the side of the harness with the two (2) diodes on the passenger side.
 - Pass the harness through the access on the side of the passenger seat and above the chassis floor.
 - Insert the single leg of the harness into the driver seat through the 1-inch hole on the interior side of the seat base. See Figure 2, yellow arrow.

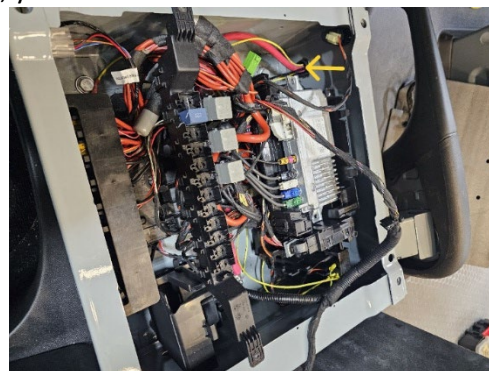


Figure 2

4. Connect #5191843 Jumper Audio Sub/Amp to Ignition Signal Wire with part #5152028, harness jumper.
 - Cut the ignition signal wire with either the wire strippers or wire crimpers.
 - Connect part # 5152028 harness jumper, to the ignition signal wire with one butt connector connected to the jumper wire, see Figure 3 Yellow Arrow, and the other two attached to each side of the cut ignition wire, see Figure 3 Red Arrow.

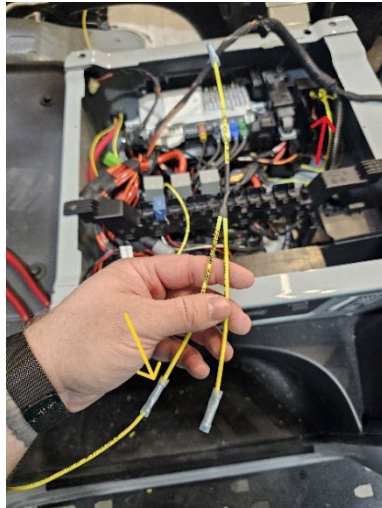


Figure 3

5. Connect #5191843 Jumper Audio Sub/Amp to house switch signal with #5152028 harness jumper.
 - Cut the wire labeled “AUDIO HSE SW SIG” with the wire strippers or crimpers, see figure 4A.
 - Make connection with the side of the jumper harness containing the diode, shown in figure 4B.



Figure 4A

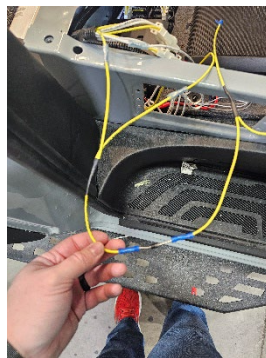


Figure 4B

6. Disconnect Remote Wires from Amplifier
 - With 2 mm Allen wrench, disconnect remote jumper from amplifier power port. Figure 5, yellow arrow.
 - With 5/32 Allen Wrench, disconnect remote wire to subwoofer from the amplifier. Figure 5, red arrow.

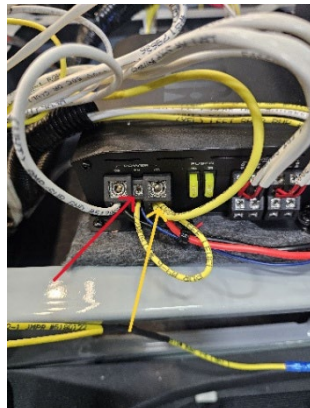


Figure 5

7. Connect the remote wires to the jumper harness
 - Twist the yellow amplifier remote jumper and blue subwoofer remote wire together so that they can be fed into the same butt connector.
 - Connect the remote wires from the amplifier to the jumper harness as shown in figure 6.

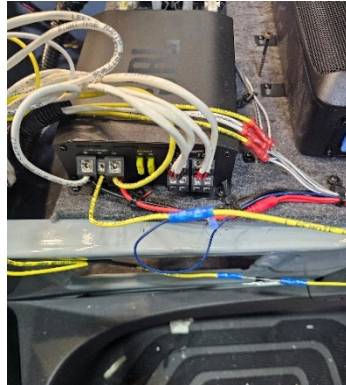


Figure 6

8. Reinstall center floor mat by lifting the mats that are in place and replace the center floor mat ensuring that the mat covers the wire access holes. See figure 7.



Figure 7

9. Reinstall Driver Seat
 - Place the driver's seat back into position on the permanently mounted seat base.
 - Drive the four bolts shown below back into the seat using the torque wrench and E12 socket and torque to 29 ft-lbs. See figure 8.

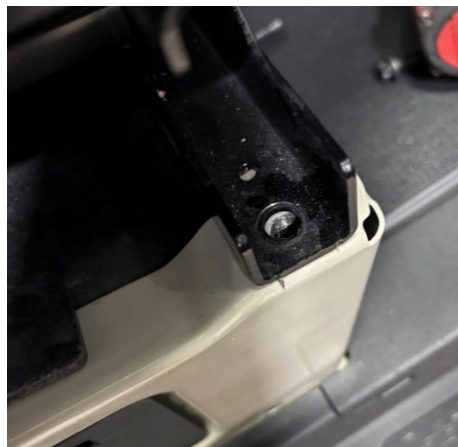


Figure 8