



# SERVICE BULLETIN

Subject: Water ingress into the luggage compartment

Bulletin Type: Field Fix Conditional

Bulletin No: TS45-FC-2604

PQR No: 500000008141

Rev No: 00

Ref. No: 700005025

Vehicle Model and Number of Vehicle:  
TS45 / 342

Flat Rate Time / Code: 30 min

\* You can check whether your vehicle is within the scope via TT-DOC.

Date of issue: 20.05.2026

Modify Before: 20.05.2029

What to do with off coming parts:

- Scrap
- Return
- Use with additional parts
- On consignment
- No off coming parts

What to do with outstanding parts of previous revision:

- Scrap
- Return
- Use with additional parts
- On consignment
- No outstanding parts

Explain technical summary of the modification implemented:	This document shall be applied to vehicles with water ingress occurring through the luggage compartment vent and its surrounding area.
Under what conditions is this service bulletin applicable?:	This procedure is applicable to all vehicles with customer complaints of water ingress through the luggage compartment vent.

Bulletin Responsible: Kurtuluş Taş

Published & Approved By: Esin Arısoy

## SAFETY INSTRUCTIONS

### 1. Mechanical Requested Dress Code

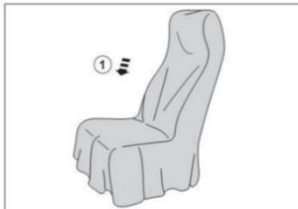


#### WARNING:

- Dress properly to avoid personal injury and damage to the vehicle

- ✓ Always wear protective clothing
- ✓ Do not wear any worn or loose-fitting clothing
- ✓ Remove jewelry before starting to work
- ✓ In case of long hair, use hairnet
- ✓ The illustration on the left shows some of the correct and incorrect clothing
- ✓ Sharp edged items should be avoided in order not to scratch vehicle (i.e. belts, watches, necklace)

### 2. Protect Seats when Mechanic Starts Working



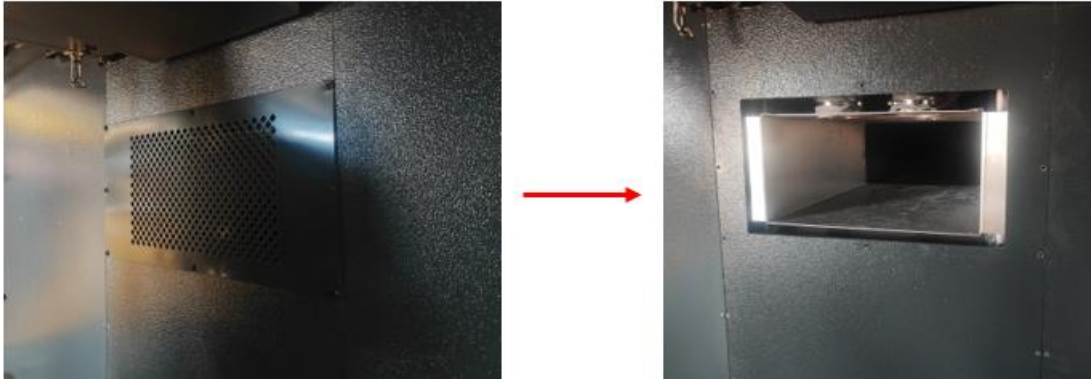
- ✓ Seats, trimming, upholstery stuff and carpeting should be protected with appropriate coverings.

### 3. Welding on the Chassis

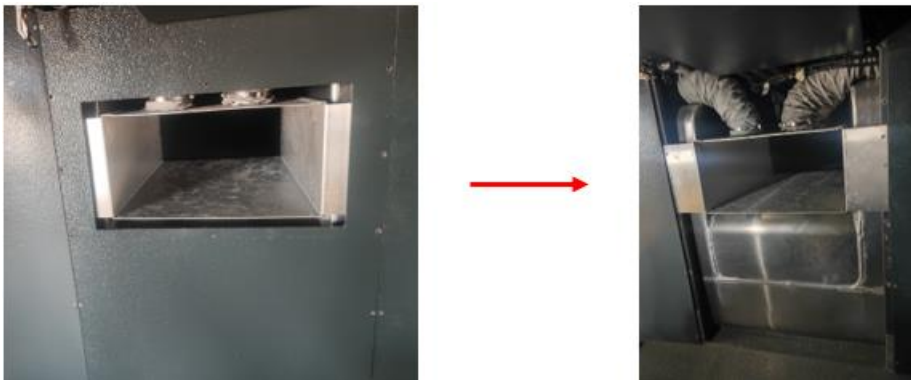
- a. Always disconnect the batteries (starting with the negative lead).
- b. Disconnect the connectors of electrical and electronic equipment (electronic control units, sensors and actuators) if they are less than 2 meters away from the chassis part to be welded or the earth terminal of the welding equipment.
- c. The earth terminal should never be attached to vehicle components such as engine, axles and springs. Arcing on these parts is not permitted, because of the risk of damage to bearings, springs, etc.
- d. The earth terminal must make good contact and be placed as close as possible to the part to be welded.
- e. Plastic pipes, rubber parts and parabolic springs should be well protected against welding spatter and temperatures higher than 70°.
- f. The contact switch must not be in the accessory or contact position. The contact key should be removed.
- g. Reconnect in reversed order of disconnecting. Ensure that a good earth connection is made between chassis, engine and cab.

## TECHNICAL INSTRUCTIONS

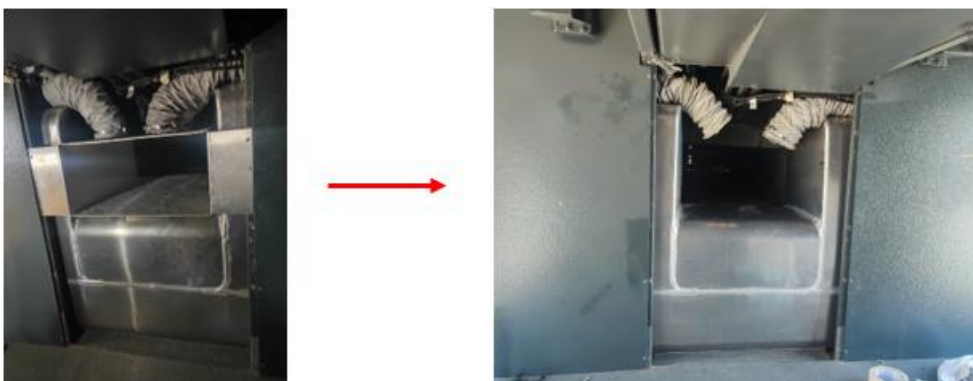
1. Using a cordless screwdriver with a Phillips bit, remove the screws securing the vent located on the front wall of the luggage compartment panel. Detach the vent to obtain the view shown on the right.



2. Using a cordless screwdriver with a Phillips bit, remove the screws securing the wooden plate beneath the vent and detach the plate from its position.



3. Remove the clamps securing the ventilation pipes above the fuel tank, detach the pipes, then unscrew and remove the aluminum sheet panel located underneath.



4. After taping around the vent located behind the fuel tank, apply sealer into the gaps between the vent and the body to close the openings.

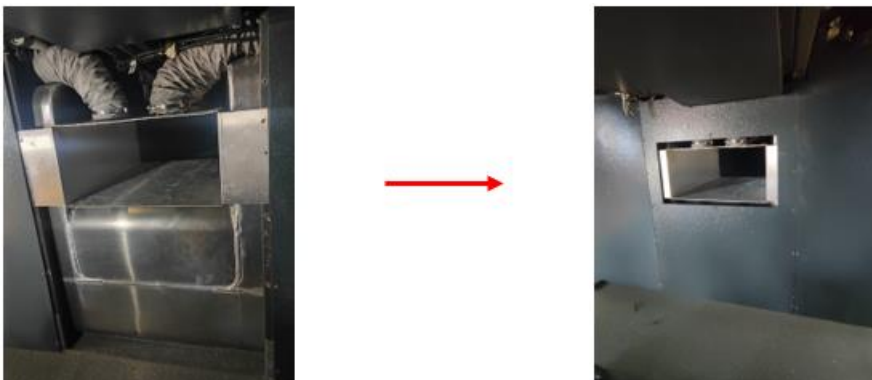


**Note:** Full curing of the sealer will take 24 hours; during this period, do not drive the vehicle on wet surfaces or in rainy or snowy conditions.

5. After installing the aluminum sheet panel on top of the fuel tank, position the ventilation pipes in place and tighten their clamps.



6. Position the wooden plate on the front wall of the luggage compartment panel and tighten its screws using a cordless screwdriver with a Phillips bit.



7. Place the vent on the wooden plate located at the front wall of the luggage compartment panel and tighten its screws using a cordless screwdriver with a Phillips bit; the modification is completed.

