

Back of Cab Crossmember Relocation

Release: 1**Technician Skill Level:** A**Revision Note:** 06/19/2026 Initial Release**Market:** North America**Service Category:** Service Department**Applicability:** Please refer to VDA+**Section:** Function Group 711**Description:**

The back of cab crossmember is mounted 50mm too far forward.

Concern:

The crossmember may come in contact with certain driveshaft U-joint configurations.

Action:

Relocate the crossmember rearward 50mm.

Warranty Information

This repair is covered by an authorized Service Program. Reimbursement is obtained through the normal claim handling process.			
Claim Type (used only when uploading from the Dealer Bus. Sys.)			B
Labor Code		Description	Total Hours
Main Code	1720-16-09-01	Campaign General 100 x 0.1	10.0
Causal Part		25132021	
SCC Authorization Code		S4990	
Expiration Date		June 30, 2027	

Back of Cab Crossmember Relocation

Parts Information

Order using the normal process. Do **NOT** order both lists. **ONLY** order **ONE** of the parts lists.

- If your dealership has the needed Huck fastener installation tools, use part list A.
- If your dealership does not have the needed Huck fastener installation tools, use part list B.

Part List A		
Part Numbers	Part Names	Quantity
60111757	Flange Screw	4
990961	Flange Lock Nut	10
60111762	Flange Lock Nut	10
60111760	Flange Screw	4
60114362	Flange Lock Nut	4
992328	Flange Lock Nut	4
60116946	Collar	10
60116933	Bolt	10
21475706	Collar	2
21475321	Bolt	2
21095726	Gasket	1
21095721	Gasket	1

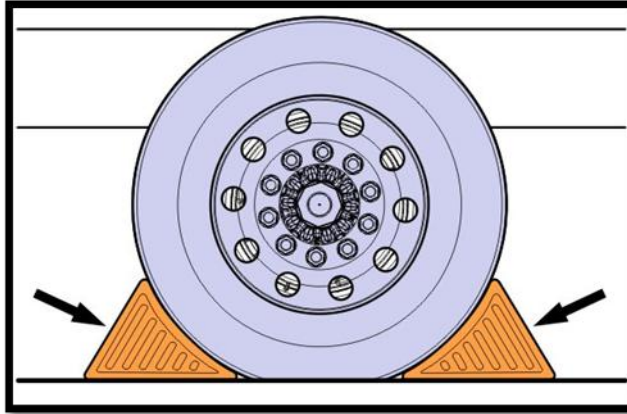
Back of Cab Crossmember Relocation

Part List B		
Part Numbers	Part Names	Quantity
60111757	Flange Screw	21
990961	Flange Lock Nut	27
60111762	Flange Lock Nut	10
60111760	Flange Screw	4
60114362	Flange Lock Nut	4
992328	Flange Lock Nut	4
21095726	Gasket	1
21095721	Gasket	1

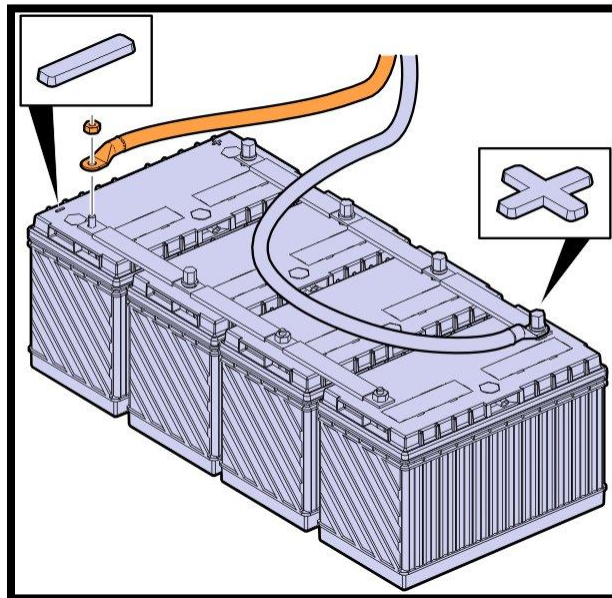
Back of Cab Crossmember Relocation

Repair Procedure

1. Secure the vehicle for service.
2. Install wheel chocks.

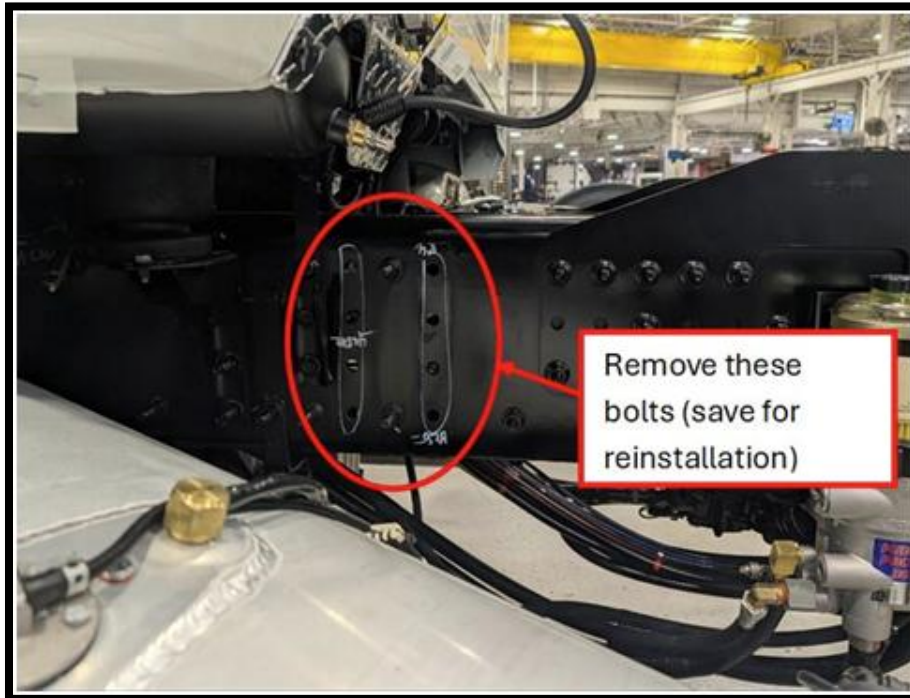


3. Disconnect the cable from the negative terminal.

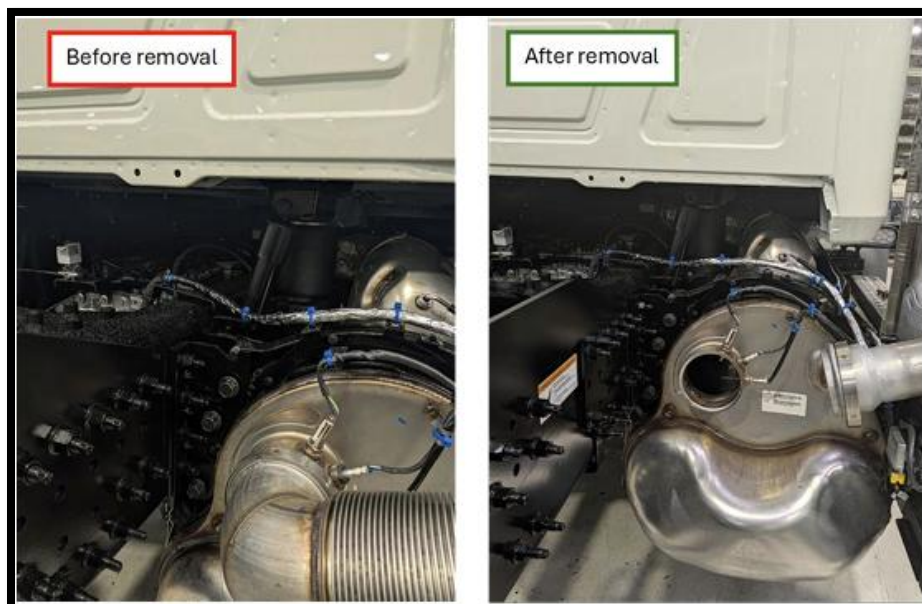


Back of Cab Crossmember Relocation

4. Follow Impact operation 2341-03-02-01 Fuel Tank Replacement, to remove the left side fuel tank.
5. Remove the rear fuel tank mounting bracket. Retain the hardware for reinstallation.

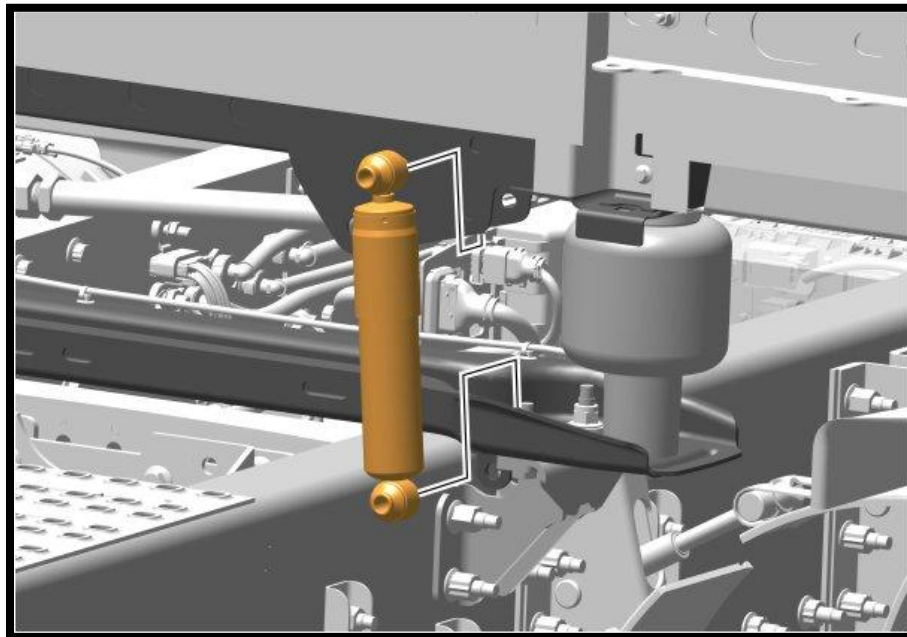
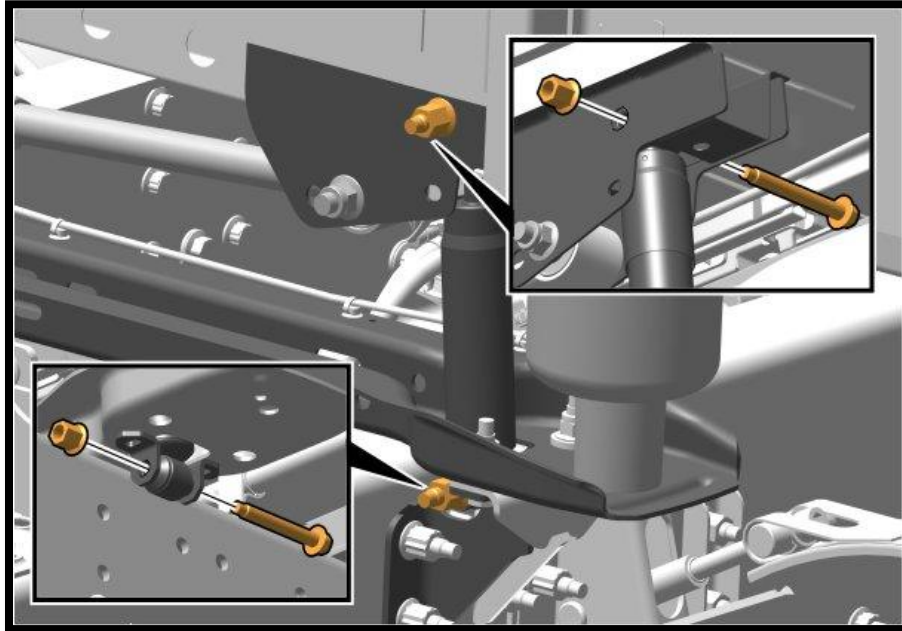


6. Remove the EATS outlet exhaust elbow. Retain clamps for reinstallation.



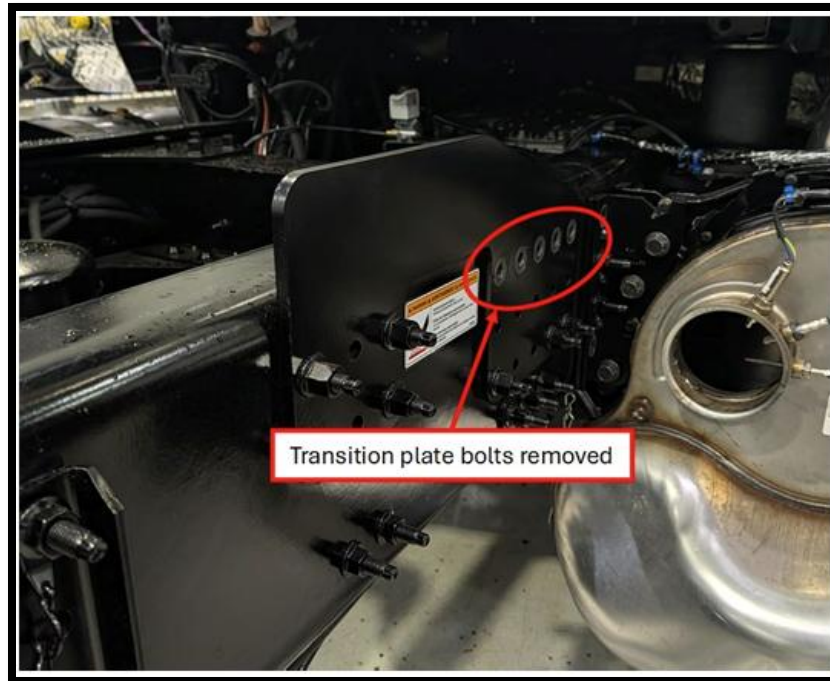
Back of Cab Crossmember Relocation

7. Support the rear of the cab.
8. Drain the air system.
9. Remove both the left and right cab shocks.

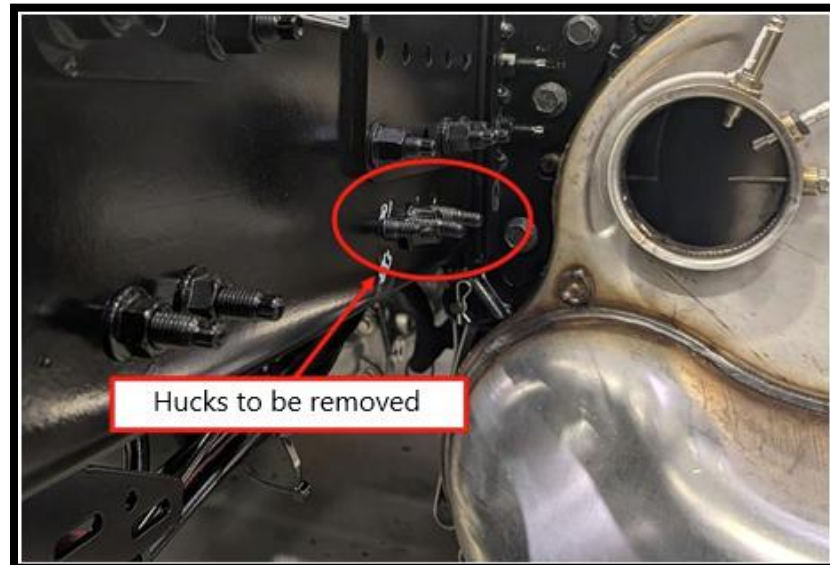


Back of Cab Crossmember Relocation

10. Remove any other components that interfere with access to the back of cab crossmember hardware.
11. (Right Side Only) Remove the five bolts pictured below. Retain hardware.

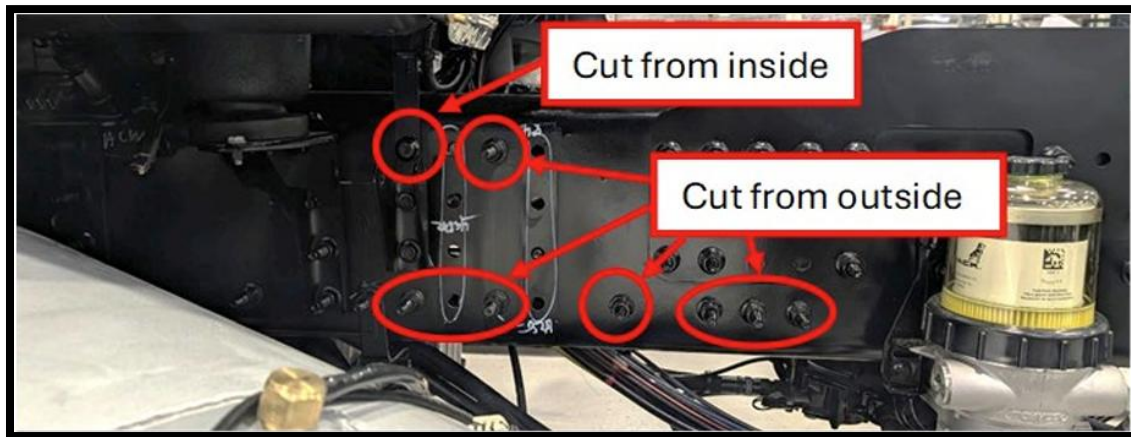


12. (Right Side Only) Remove the Huck fasteners pictured below. Refer to Impact Operation 7113-01-01-01 Permanent Fastener, Removal for information on removing the Huck fasteners.

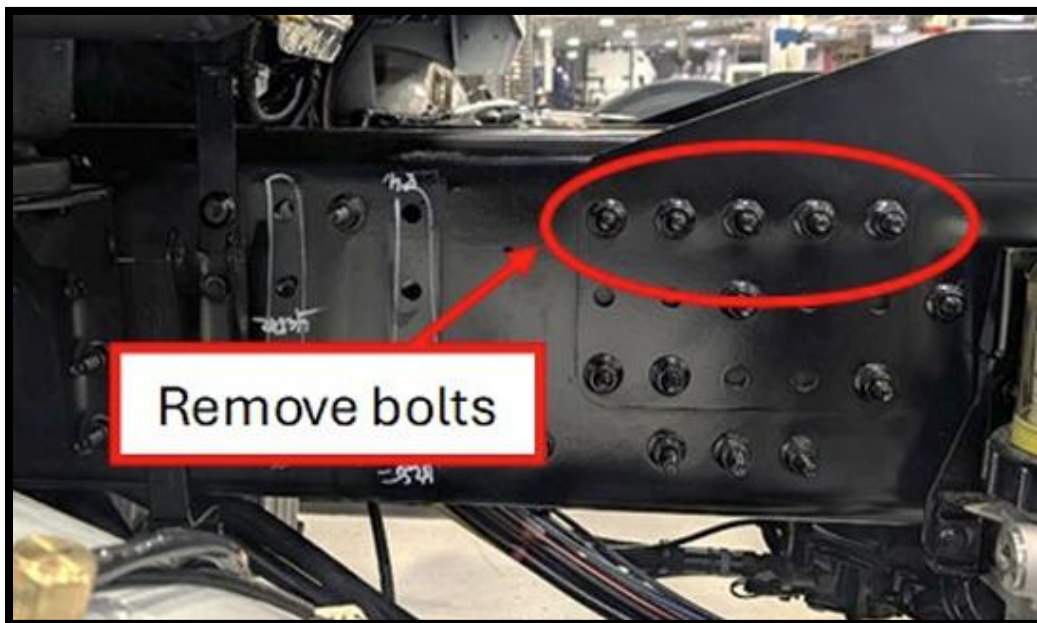


Back of Cab Crossmember Relocation

13. (Left side Only) Remove the eight Huck fasteners pictured below. Refer to Impact Operation 7113-01-01 Permanent Fastener, Removal for information on removing the Huck fasteners.

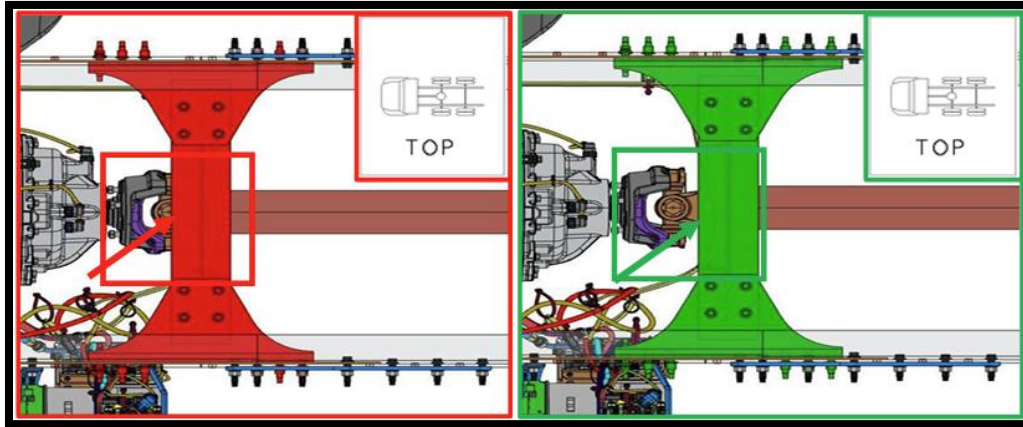


14. (Left Side Only) Remove the five bolts pictured below. Retain hardware.



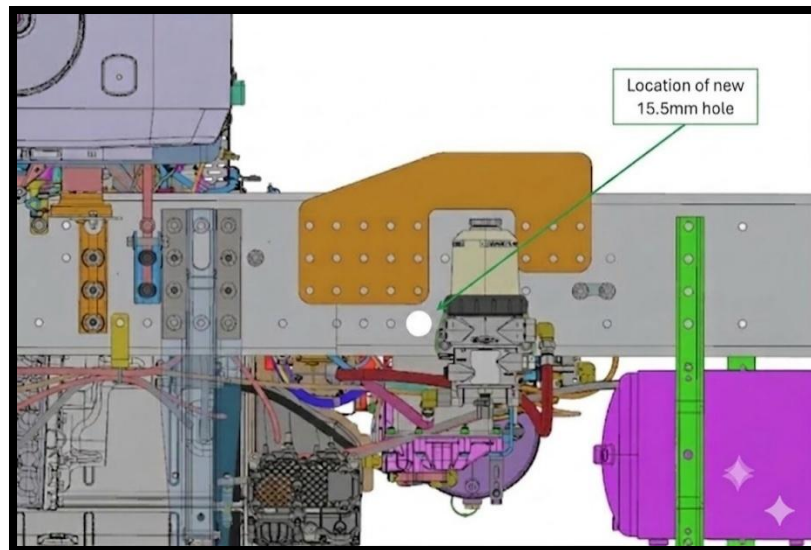
Back of Cab Crossmember Relocation

15. Slide the crossmember reward 50mm, which equals one set of holes.



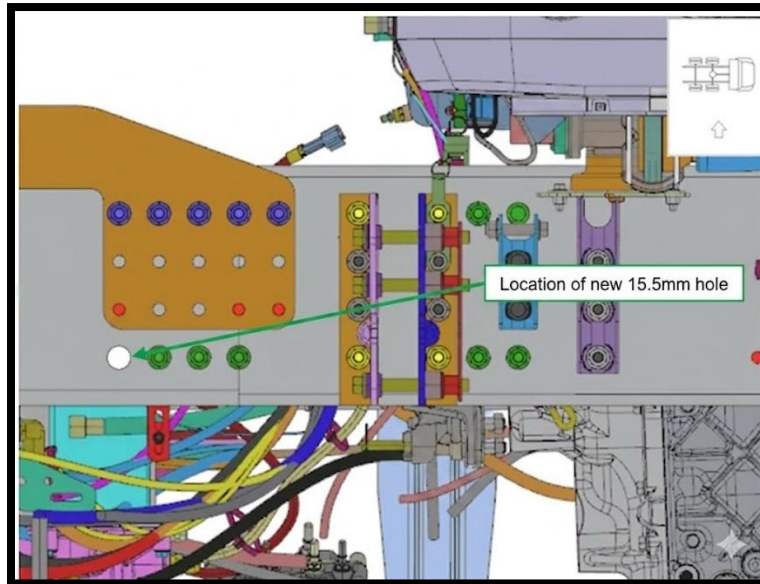
16. On both the left and right sides, a 15.5mm hole will need to be drilled. Use the rear bottom hole of the crossmember for reference.

- Left Side



Back of Cab Crossmember Relocation

- Right Side



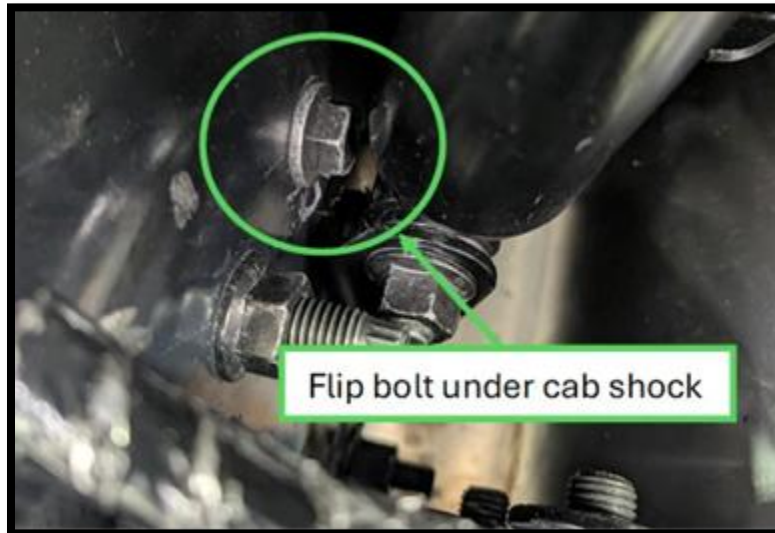
17. Secure the crossmember.

- Retained bolts will be installed in the holes of the crossmember that previously had hard bolts. Refer to Impact for proper torque.
- New Huck fasteners installed in all holes that had Hucks previously.
- If Huck fastener installation equipment is not available, you can install the M14 hardware provided in the parts list.
- Do not remove additional components to gain Huck tool access. Use M14 hardware when needed.

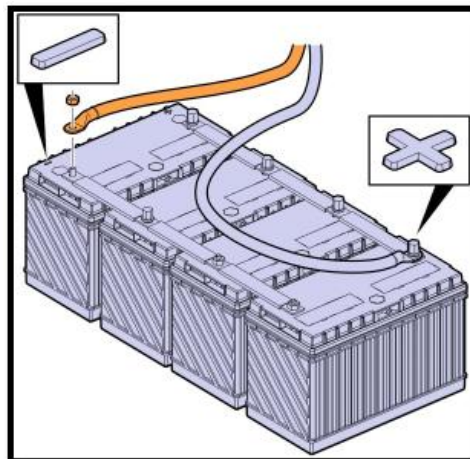
18. Plug any empty holes with M14 hardware.

Back of Cab Crossmember Relocation

19. Ensure that the bolt behind the shock mounts is flipped to allow for shock clearance on both sides.



20. Reinstalled all removed components. Refer to Impact for proper torque specs.
21. Connect the cable from the negative terminal.



22. Release the truck.