



INSTRUCTION TO SERVICE

ITS61807		6/18/2026
SECTION:	290-PLC Programs	
SUBJECT:	Theme Lts/RGB required	
ISSUE:	Coaches lack RGB requirement	
SUMMARY:	Flash the latest released PLC Program to the Vehicle	

ITS61807

Ref. NHTSA Recall No.	Ref. Transport Canada Recall No.
Not Applicable	Not Applicable

THIS ITS DOCUMENT SHOULD BE RETAINED AND REFERRED TO FOR FUTURE MAINTENANCE UNTIL THE NEW FLYER PARTS AND/OR SERVICE MANUAL IS UPDATED TO REFLECT WORK DONE AS A RESULT OF THIS DOCUMENT. ENSURE THAT THIS DOCUMENT IS AVAILABLE FOR PARTS AND MAINTENANCE STAFF GOING FORWARD.

This document and the contents discussed herein are the confidential and proprietary information of New Flyer Industries Canada ULC and New Flyer of America Inc. and are disclosed by New Flyer in confidence. This document and the contents herein are not to be disclosed by the intended recipient without the prior written authorization of New Flyer. Any unauthorized disclosure, reproduction or other distribution of this document or information strictly prohibited and may result in action being taken against the party making the unauthorized disclosure. This document and all copies hereof must be returned to New Flyer upon request.



Section	Field Name	Input / Example
1. EXECUTIVE SUMMARY	Document Type	Service Campaign
	Year and Model Affected	2026 J4500
	Triggering Event	Always present
2. SAFETY RISK	Safety Risk Statement	Not Applicable
3. CORRECTIVE ACTION	Corrective Measure	Flash Latest Released PLC Program to the Vehicle
	Issue Resolution Statement	Issue resolved by updating logic groups MDSS-COMMON
	Validation Criteria	Check that the required lights are on with ignition

PROCEDURE:

1. Set park brake and chock wheels.
2. Turn the main battery disconnect switch to the “ON” position.
3. Turn the MRS Switch to the “DAY RUN” position to turn on the bus.
4. Turn the HAZARD SWITCH to “ON”.
5. Connect the USB interface of your NEXIQ to your laptop.
6. Connect the CAN interface of your NEXIQ to Channel 1 (Pins C and D) of the Rear Vehicle Diag port.
7. Open the PLC program in the VMM software.
8. Select Tools and Query VMMs.

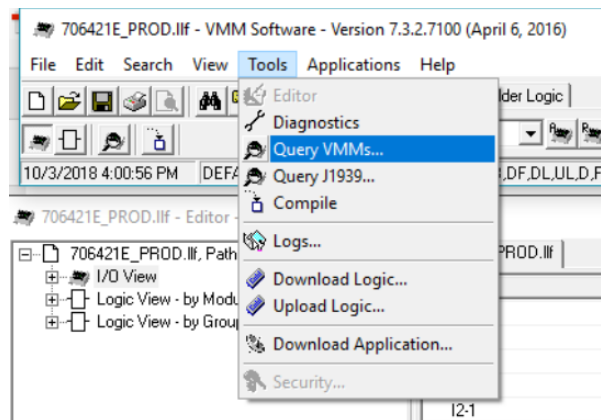


Figure 1: Query VMMs Option

9. Ensure you are communicating with **all** the nodes in the query screen prior to downloading.
10. Select download logic.
11. Ensure the correct file name and revision appear in the file window.

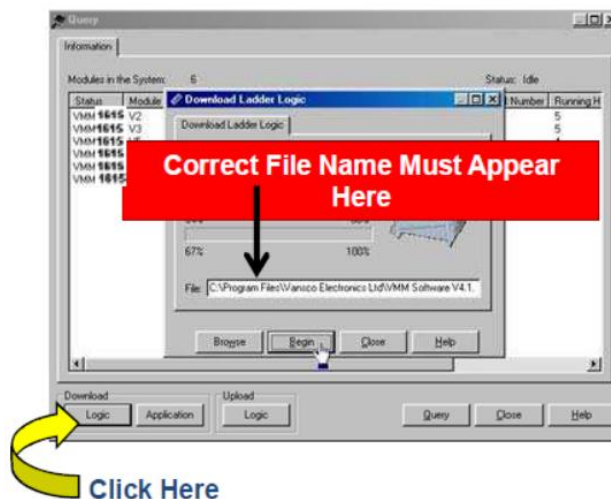


Figure 2: File Selection and Flashing Start



12. The software will verify the correct number of VMMs are found. Do not download program if all VMMs are not located. If the correct number of VMMs were found, select Yes.
13. Flashing will happen in two parts; the main logic and the J1939 Table data will be 2 separate progress screens. Make sure not to close anything after the first progress screen reaches 100% as another one will appear after that also needs to complete before flashing is completed.
14. Once flashing has truly finished, allow the bus to stay awake for 15 minutes without knifing the bus or turning off the hazards. This ensures that the VMMs stay awake long enough to load the program into the dash with the new PLC program. This is an important step as the dash may get stuck rebooting repeatedly if interrupted while it is being programmed by the other VMMs. This needs to happen as the DPS70 has a slave VMM inside of it that is not programmed as a part of the above outlined VMM flashing process.

NOTE – For a non-touchscreen bus, there is no requirement to wait 15 minutes. The bus can be turned off immediately after a flash.

15. Remove all tools and debris from work area to return coach to service.
16. Turn the main battery disconnect switch to the “OFF” position.

LABOUR ESTIMATE				
	Operation	Number of Technician(s)	Hours	Labor Time T X HR
1	Flash VMM Program	1	0.5	0.5

SPECIAL TOOLS REQUIRED					
Item	Part Number	Description	Qty.	Units	Notes
1		Laptop with Vansco VMM Software	1	EA	
2		NEXIQ DLA Adaptor	1	EA	