

Job Code:	M920035 – 26-008	Product:	Lineage LVT1
Date:	5/20/2026	Repair Time:	0.05 h

Purpose

This bulletin describes the procedure to install the Compressor Power Relay Upgrade on affected Lineage units. The upgrade routes the A/C compressor positive power feed through a dedicated 120-amp relay, removing the compressor load from the control board. The upgrade is supplied as SDG kit 5000041 (GDRV PN 710676).

NOTE: Actual color and finish of components may differ from those depicted in this document.

Safety

This document provides general instructions. Many variables can change the circumstances of any procedure, including the degree of difficulty involved in the service operation and the ability level of the individual performing the operation. In the event the skill level required is too advanced or the procedure too difficult, a certified technician should be consulted before performing the operation. Failure to correctly install, remove, or service the system may result in voiding the warranty, inflicting injury, or even death.

WARNING

The "WARNING" symbol indicates a procedure has a safety risk involved and may cause death, serious personal injury, or severe product and/or property damage if not performed safely and within the parameters set forth in this document.

WARNING

ELECTRICAL HAZARD. Ensure the coach power supply is disconnected and there is no power to the A/C system before beginning this procedure. This circuit carries high current; working on it energized can cause arc-flash, burns, fire, or component damage.

CAUTION

The "CAUTION" symbol indicates a procedure has a safety risk involved and may cause personal injury or product and/or property damage if not performed safely and within the parameters set forth in this document.

CAUTION

CONNECTION INTEGRITY. Tighten all power connections fully. Loose high-current connections can overheat, arc, and cause fire or component failure.

Job Code:	M920035 – 26-008	Product:	Lineage LVT1
Date:	5/20/2026	Repair Time:	0.05 h

Affected Units

This procedure applies to Lineage units identified in the affected population for this bulletin. Confirm unit eligibility before performing the repair.

Affected models: Lineage LVT1 built prior to 11.4.2035 – 2.2.2026

Affected serial / VIN range: 1FDBF6XG4SKA12992 (TEE00180) - 1FDBF6XG8SKA12946 (TEE00255)

Claim Information

Submit warranty claims using the following job code and labor time.

Job Code	M920035
Kit Part #	710676
Repair Time	0.50
Pre-Auth Required	No

Resources Required

The following tools are required to complete this procedure:

- 1/8" flat screwdriver tip (for control board terminal release)
- Phillips screwdriver / driver (for self-tapping ground and mounting screws)
- Wrench or socket suited to the chassis power stud / breaker connection

Required Components

All components below are supplied in SDG kit 5000041.

Callout	Part #	Qty	Description
1	710676	1	AC RELAY UPGRADE KIT

**Part images not to scale relative to each other.*

Job Code:	M920035 – 26-008	Product:	Lineage LVT1
Date:	5/20/2026	Repair Time:	0.05 h

Preparation

NOTE

Confirm the coach power supply is disconnected and there is no power to the A/C system before opening any connection. Verify the absence of power before proceeding.

Step 1 — Disconnect the coach power supply and confirm there is no power to the A/C system.

Instructions

Step 1 — Access the chassis power strip or breaker where the compressor positive power wire is connected. Disconnect the wire and reconnect it to the new relay as shown.

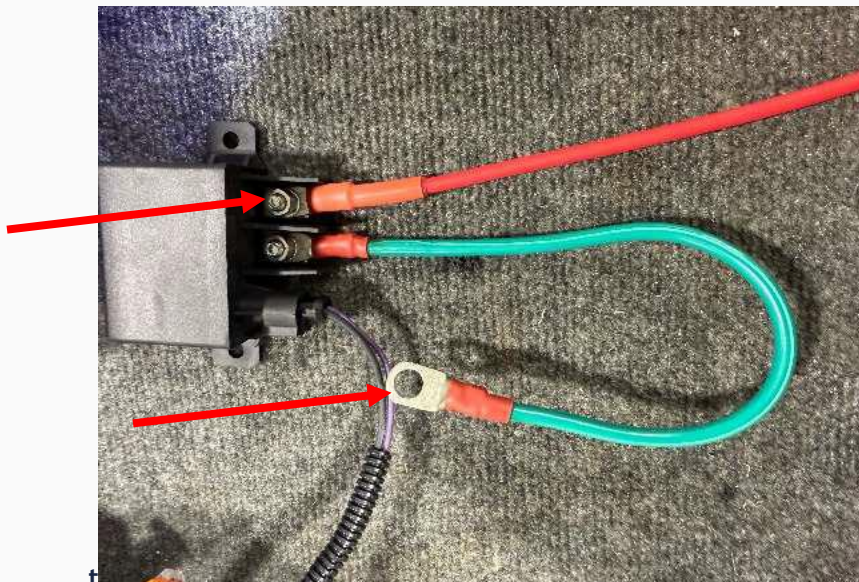


Fig. 1 — New 120-amp relay — compressor positive power wire and 12" power wire connections.

Job Code:	M920035 – 26-008	Product:	Lineage LVT1
Date:	5/20/2026	Repair Time:	0.05 h

Step 2 – Connect the 12" power wire (PN 0100149) from the relay to the original stud or breaker that the compressor power wire was removed from. Tighten all connections.

Note: All power connections must be fully tightened before power is restored.

Step 3 – Remove the purple wire from the control board using a 1/8" screwdriver tip as shown.

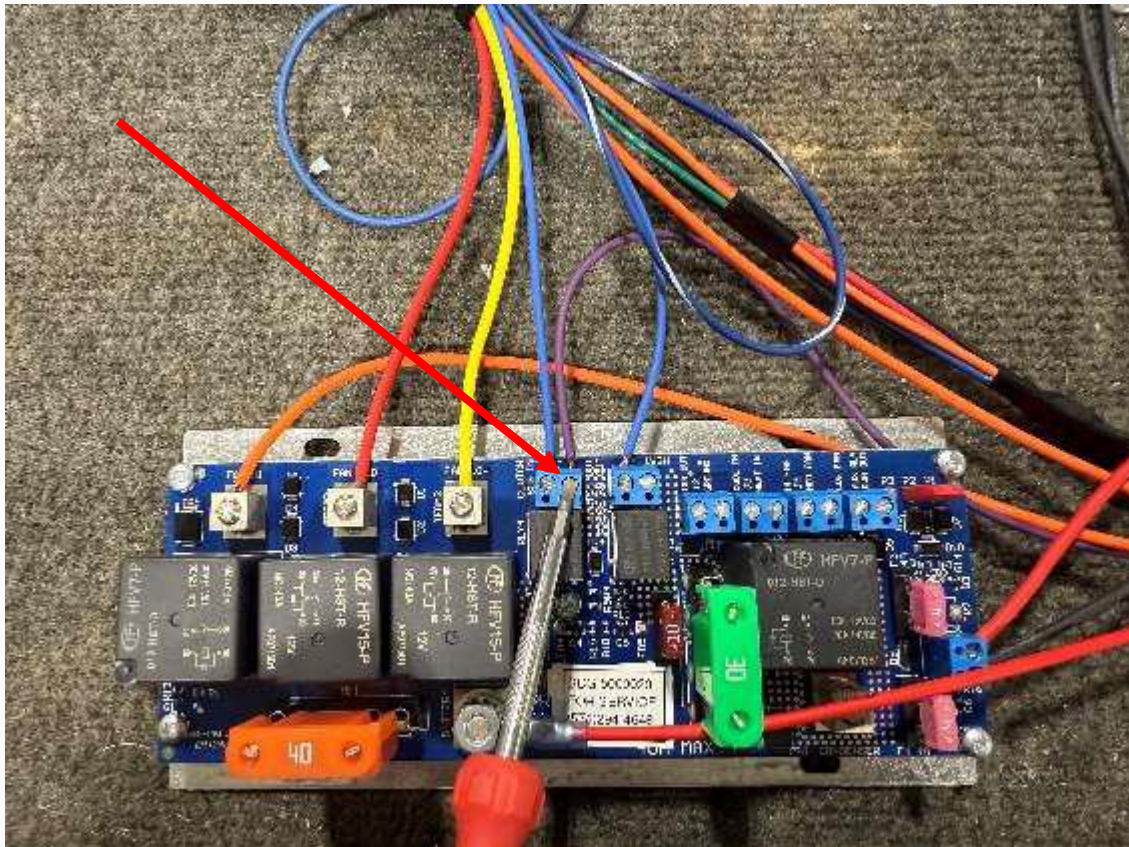


Fig. 2 – Control board — purple wire terminal location.

Step 4 – Connect the removed purple wire to the supplied WAGO connector as shown.

Step 5 – Connect the short purple wire on the WAGO connector back onto the control board in the same position the original purple wire was removed from.

Job Code:	M920035 – 26-008	Product:	Lineage LVT1
Date:	5/20/2026	Repair Time:	0.05 h

Note: The replacement purple wire must go into the exact same control board position as the wire removed in Step 3.

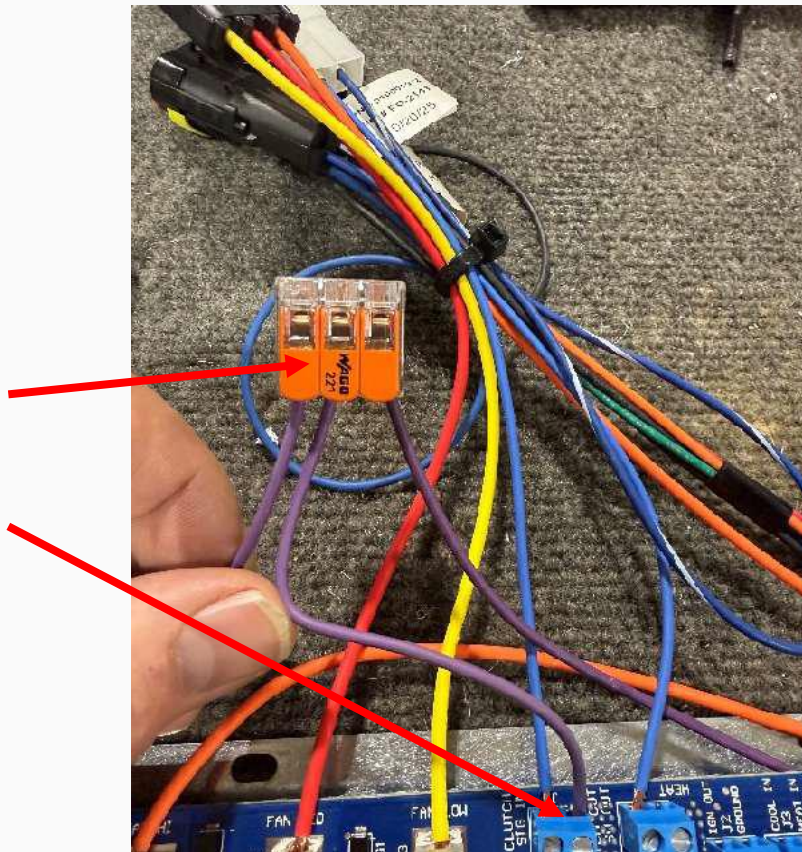


Fig. 3 — WAGO connector splice — removed purple wire and short purple wire to control board.

Step 6 — Using a provided self-tapping screw (PN 0200068), ground the black wire to a good chassis / body ground source.

Step 7 — Secure the relay to an accessible location using two of the provided screws or tie-wraps.

Step 8 — Turn battery power back on and check compressor operation.

Job Code:	M920035 – 26-008	Product:	Lineage LVT1
Date:	5/20/2026	Repair Time:	0.05 h

Verification

Before returning the unit to service, verify the following:

- The compressor positive power wire is connected to the new relay.
- The 12" power wire is connected to the original stud / breaker and fully tightened.
- The purple wire is spliced through the WAGO connector and returned to its original control board position.
- The black ground wire is secured to a good chassis / body ground with a provided screw.
- The relay is mechanically secured to an accessible location.
- All power connections are fully tightened.
- Battery power is restored and the compressor operates correctly.