

Date: May 6, 2026
Subject: Potential Thermal Overload Breaker Tripping Under High Ambient Conditions
Location: e-Tech Library

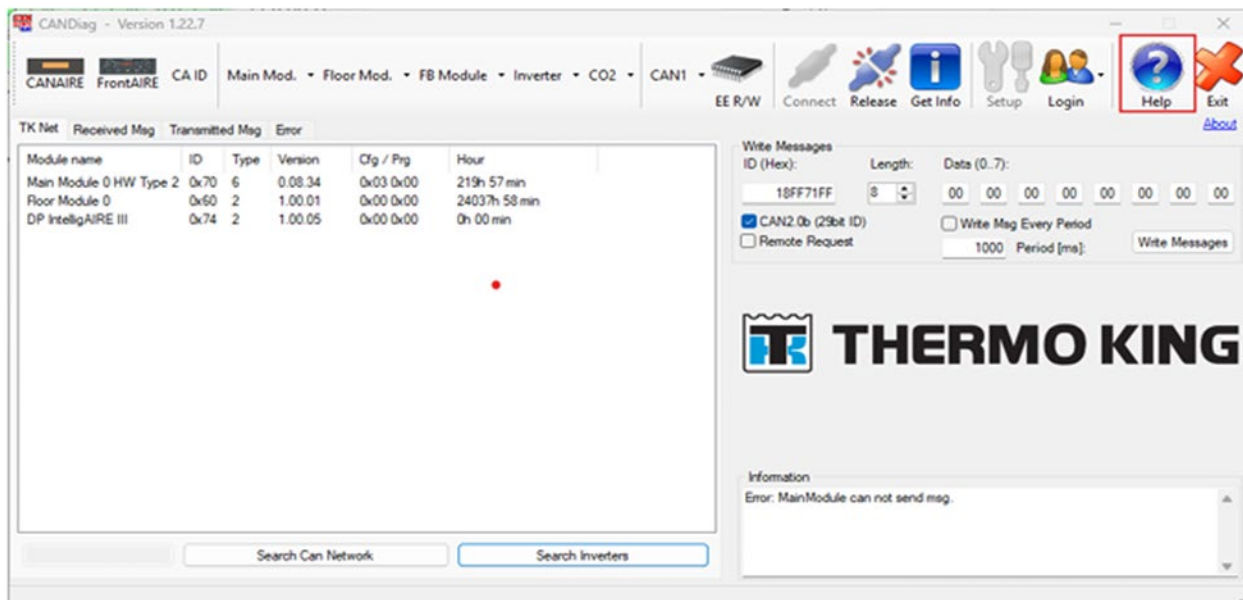
Units: RLFE1HPMV, RLFE2C, RLFE2, RLFE3, TE15, TE15HP Units manufactured from April 2021 – November 17, 2025, see complete list on page 7.

Description: Thermo King engineering and regional managers have observed instances of thermal overload breakers tripping under high ambient temperatures.

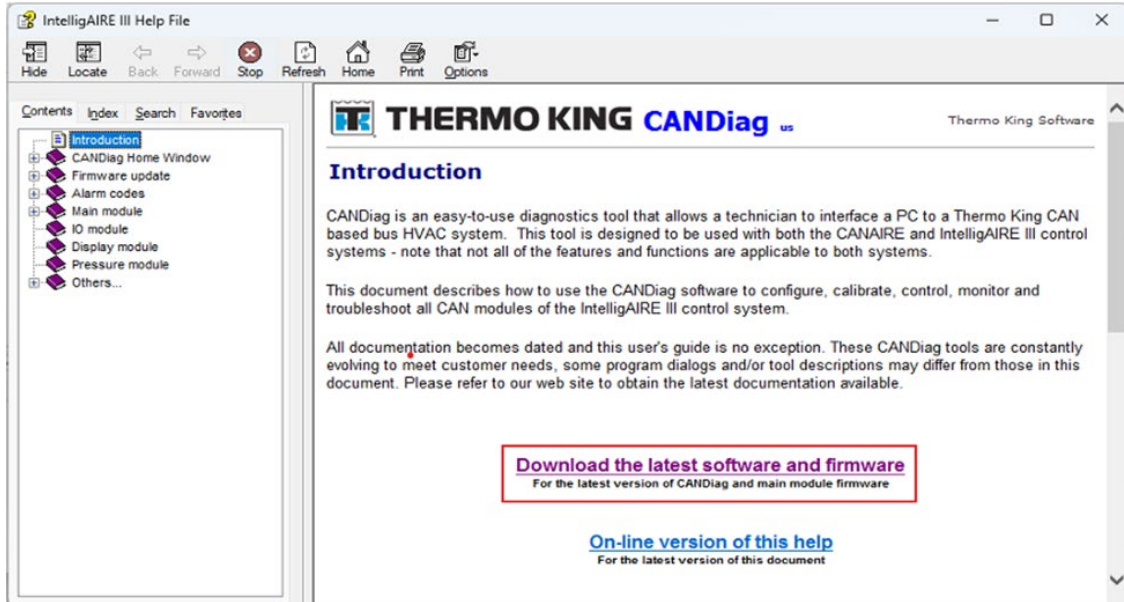
Thermo King has determined that it is permissible and advisable to set the thermal breakers to their maximum setting and to ensure that the most current firmware is installed on the unit.

Firmware Update:

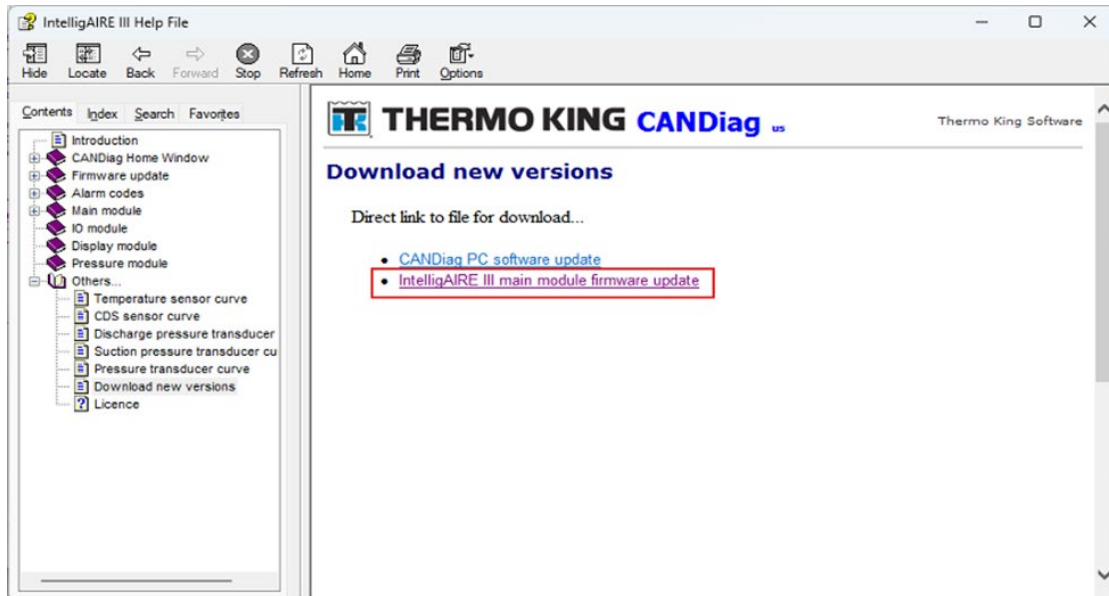
1. Download latest versions of IA3 firmware using “Help” button in the CANDiag program, while connected to the internet.



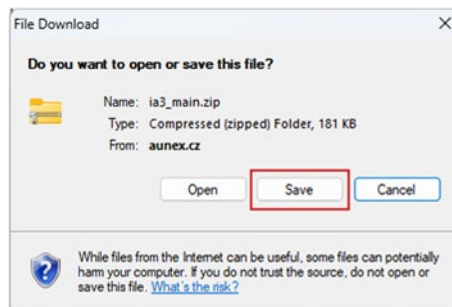
2. Click on the link for latest software and firmware.



3. Click on the link for IntelligAIRE III main module firmware update.






4. Save the file to the local PC.



5. Downloaded .zip file will contain the .mhx file to be flash loaded into the controller.

Note: You may have to perform an extract of all function on the zip folder to see the IAIII folder in the loader main module search window.

Name	Type
 mm_04.04.15.mhx	MHX File
 mm_05.04.15.mhx	MHX File
 readme.txt	Text Document

Note: Firmware versions 04.xx.xx are for green coated main modules. Firmware versions 05.xx.xx are for blue coated main modules. As of 3/20/2026, 04.04.15 is for green coated main modules and firmware version 05.04.15 is for blue coated main modules.

6. The following procedure for firmware flashloading can be found in the [IntelligAIRE® III Diagnostic Manual 54650](#).

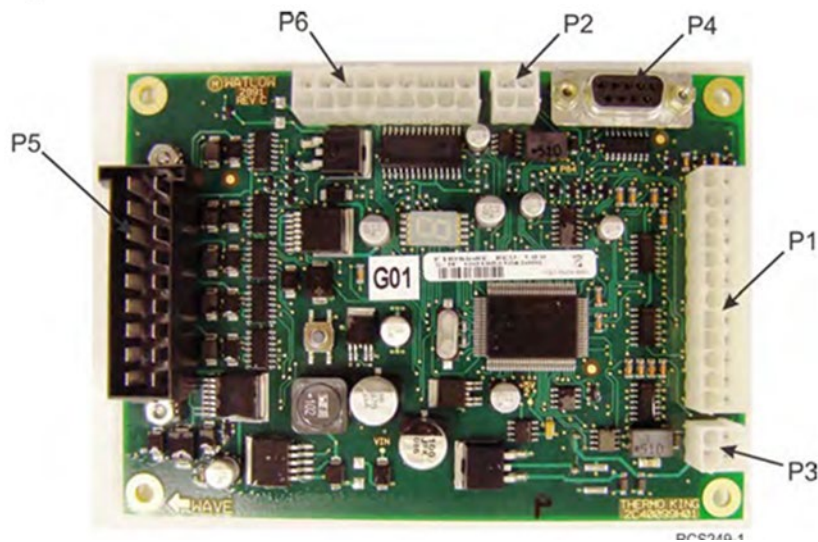


**IntelligAIRE® III Control System
Bus Units**

Flashloading Firmware: To flashload new firmware file into an ECM (Main Module).

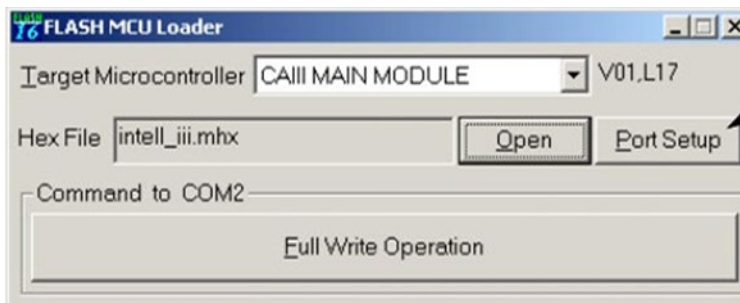
1. Connect one end of the download cable to the P4 (9-pin) connector on the ECM (Main Module) and the other end to the serial port on the PC. If the PC does not have a serial port, use the serial to USB adapter supplied in CANDiag Kit.

Note: Use the white and blue adapter, not the PCAN or Phytools adapter.

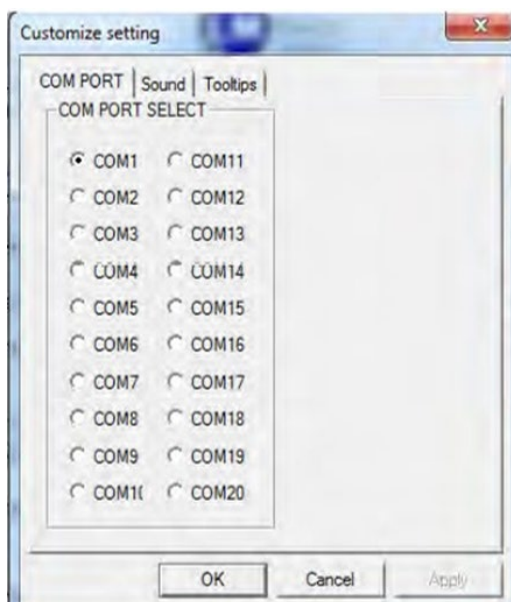


Main module connector positions

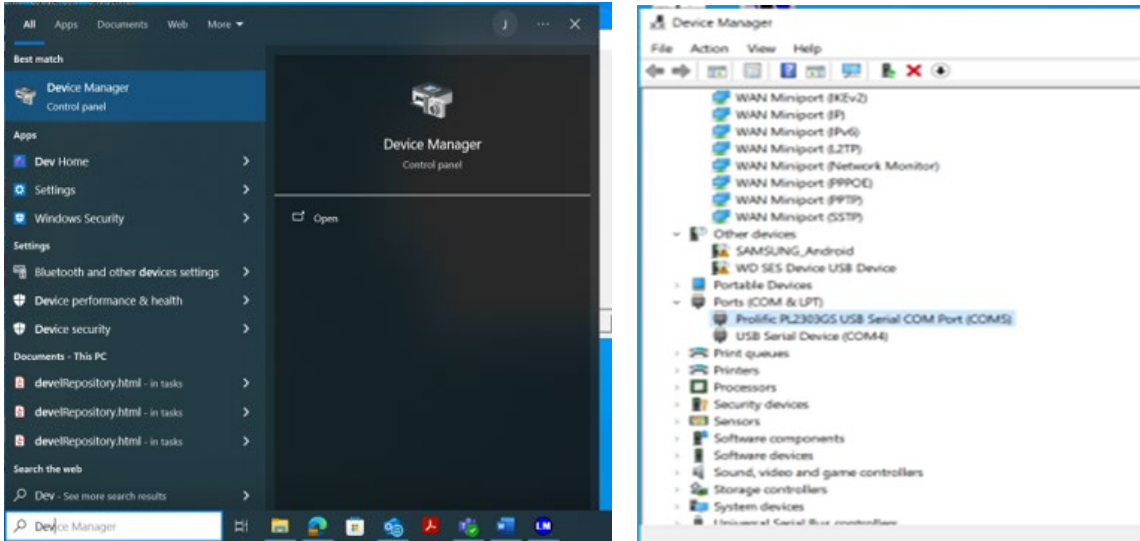
2. Apply power to the board then launch - Loader Main Module - from the desktop icon. The following window will appear.



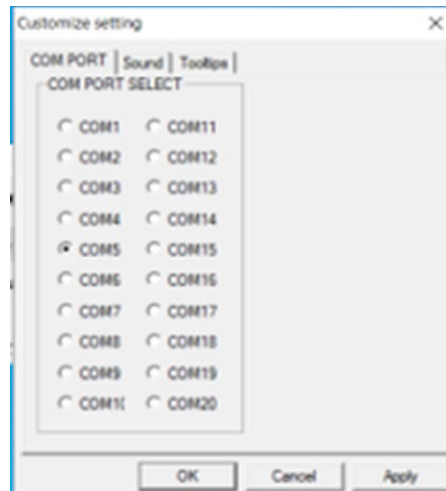
3. Select - Port Setup. Once Port Setup has been selected, the Customize setting screen will appear. This screen allows you to select from 20 COM ports.



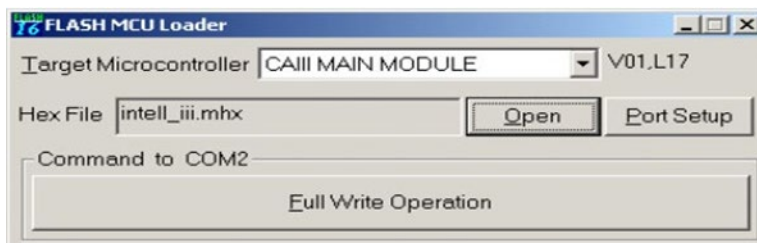
Note: The correct COM port must be selected, or an error message will appear when trying to connect to the ECM. Use the Device Manager Function on your PC or consult your IT department to determine which COM port is used by your PC.



4. Select the proper port and apply.

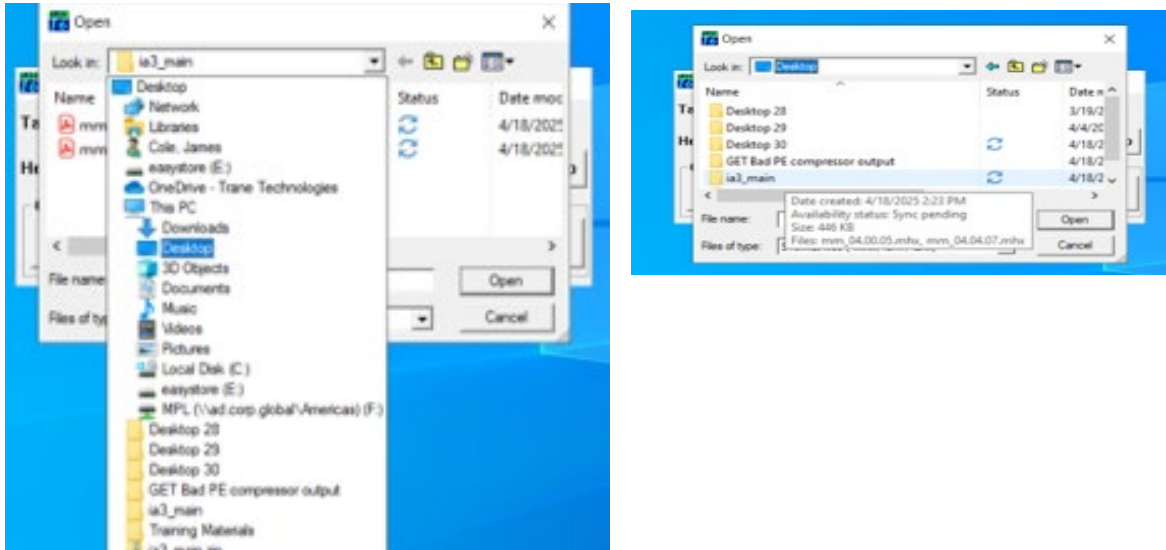


5. Select OK - You will return to the previous screen.

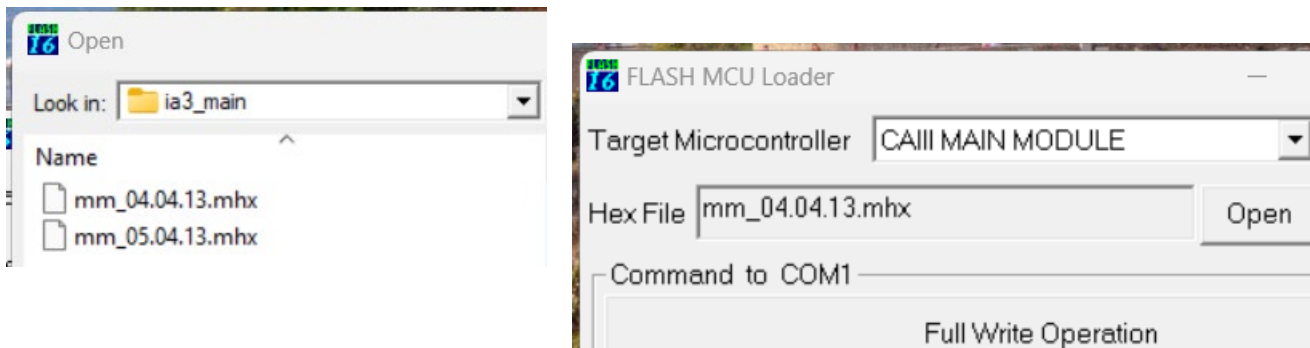


- Select - Open - search for the desired file name with a .mhx extension. For this update we will be using the most current version of firmware.

Note: Remember firmware versions 04.xx.xx are for green coated main modules. Firmware versions 05.xx.xx are for blue coated main modules.



- Double click on the appropriate .mhx file. Once the file is selected, the file name should appear in the Hex File box.



- Select - Full Write Operation - The following message will appear.



- Cycle power to the ECM (Main Module) by either turning the bus run switch off then restarting the bus, or by disconnecting and reconnecting the P3 4-pin connector on the ECM (Main Module), then, select -OK.

Note: On systems with more than one main module, power must be removed from both main modules before selecting OK.



- When the flashload is complete, select - OK - then close flash loader window, remove download cable and cycle power to return to normal operation.

RLFE1HPMV-M1	RLFE2-M6	TE15-M3
RLFE1HPMV-M2	RLFE2-M7	TE15-M9
	RLFE2-M9	TE15-M10
RLFE2C-M2	RLFE2-M16	TE15-M13
RLFE2C-M3		TE15-M15
RLFE2C-M4	RLFE3-M2	TE15-M16
RLFE2C-M5	RLFE3-M3	TE15-M17
RLFE2C-M7	RLFE3-M4	TE15-M18
RLFE2C-M9	RLFE3-M11	TE15-M20
RLFE2C-M10		TE15-M21
RLFE2C-M11		TE15-M22
RLFE2C-M12		TE15-M23
RLFE2C-M13		TE15-M24
RLFE2C-M14		TE15-M26
RLFE2C-M15		
RLFE2C-M17		TE15HP-M1
RLFE2C-M18		TE15HP-M2
RLFE2C-M19		TE15HP-M3
		TE15HP-M4