

V O L V O

Volvo Car USA LLC

Technical Journal

Technical Journal Title Electric System Temporarily Limited Message		Ref. No. TJ 37478.1.2	
Issuer (Dept.) Technical Service		Issue Date 5/5/26	Status Date 5/5/26
Car Market United States and Canada	Partner 3 US 7510 Volvo Car USA	Function Group 3229	
Function Description Miscellaneous		Page Page 1 of 6	

Attachment

File Name	File Size
TJ_37478_1.pdf	0.5167 MB

Rows beginning with * are modified

Note! If using a printed copy of this Technical Journal, first check for the latest online version.

DESCRIPTION:

*Updated Vehicle Type

If a customer experiences an Electric System Limited message along with reduced performance, and there are temperature-related DTCs in the HLCM, the root cause may be restricted coolant flow to the HLCM.

Please follow the advice under "Service" to test the HLCM cooling performance.

HLCM (High to Low Voltage Converter Module)

CSC Customer Symptom Codes

Code	Description
7G	Text window and warning symbol/Yellow symbol and text message

DTC Diagnostic Trouble Codes

Control Module	Code	Fault Type
HLCM	POD320A	Permanent
HLCM	POD3224	Permanent

Vehicle Type

Type	Eng	Eng Desc	Sales	Body	Gear	Steer	Model Year	Plant	Chassis range	Struc Week Range
356							2025-9999		-	202417-999952

Technical Journal 37478.1.2

SERVICE:

Follow the steps below to test the HLCM cooling system.

1. With a driver in the driver's seat, activate the rear window defroster, all seat heating, and the steering wheel heat.
2. Run the diagnostic sequence for HLCM temperature monitoring. See page 2 of the attachment TJ_37478_1.pdf.
3. Click the button "Live values" and observe the temperatures. See page 3 of the attachment TJ_37478_1.pdf.

Cars with working HLCM cooling

- 3.1. The HLCM cooling plate temperature and the HV battery coolant inlet temperature are about the same. See page 3.1 of the attachment TJ_37478_1.pdf.

No further action required. The HLCM cooling system is not blocked. Continue the fault tracing according to VIDA.

Cars with HLCM cooling problems

- 3.2. The HLCM cooling plate temperature is increasing significantly faster compared to the HV battery coolant inlet temperature. See page 3.2 of the attachment TJ_37478_1.pdf.

Actions

4. Check the function of the HV battery coolant pump by monitoring the requested speed vs the actual speed. The two speeds shall be the same. See page 4 of the attachment TJ_37478_1.pdf.
5. If the pump is working properly, the HLCM cooling problems are likely caused by blocked coolant flow inside the high-voltage battery. The battery will need to be exchanged.

Note: Please contact Retailer Technical Support via a TIE Prior Approval Vehicle Report to obtain technical prior approval for exchanging the battery. See TJ 37809 for more information.

Warranty claim info:

To have a warranty claim approved for the job described in this Technical Journal (TJ), use the corresponding VST operation number(s) provided.

Please note that fault tracing is not eligible for separate reimbursement under this TJ. Any fault tracing VST operation numbers will be rejected.

Additionally, ensure that the TJ number is clearly stated in the repair order text.

Failing Part: 36010867

VST Operation Number

VST Operation Number	Description
98802-2	Reimbursement acc. to TJ

VEHICLE REPORT:

Yes, please submit a Vehicle Report if the service solution described in this TJ has no effect. Use the concern area "Vehicle Report" and the sub-concern area "Support Needed", use function group 3229.

To view TJ attachments continue to next page. This TJ has one attachment.

Technical Journal 37478.1.2

2.

VIDA

Home Polestar E400V30, 1EDT AWD

Planning & Diagnostics Software Installation Information Service Journals

VIN: YSMYKEAE3SB022851 Customer Name: Connection: Virtual #3 14.5 V / 99% Available

Lists

- Planning
 - Customer Symptom Codes
 - Claim Types
 - Technical Journals
 - Service Programs
 - Operations
 - Parts
 - Software
- Diagnostics
 - Components
 - Service Functions

ECUs

ID	Name
4/700	Hands-Off Detection module (HOD)
4/112	Headlamp Control Module Left (HCLM)
4/113	Headlamp Control Module Right (HCLMR)
4/563	High-to Low-voltage Converter Module (HLCM)
4/569	High-Integrity CPU A (HIA)
4/569	High-Integrity CPU B (HIB)
4/569	High-Performance CPU A (HPA)
4/562	High-Voltage Battery Module (HVBM)

Diagnostic Sequences

- Monitoring the HLCM temperature
- Recovering HLCM from fail-safe mode

TJ 37478

3.

Monitoring the HLCM temperature

With this tool the temperature of the HLCM can be monitored. Also temperature statistics can be read.

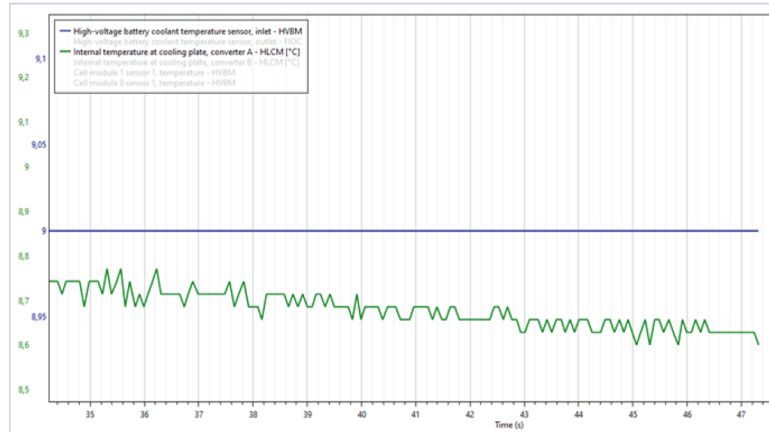
This might be useful to get an understanding of if the vehicle has some kind of cooling performance issues, especially in the HLCM part of the high-voltage battery cooling circuit.

- Click the buttons "Live values" or "Statistics" to continue.

Live values Statistics Close

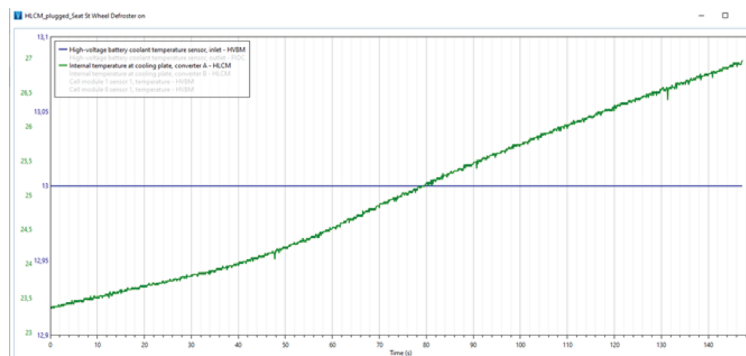
TJ 37478

3.1.



TJ 37478

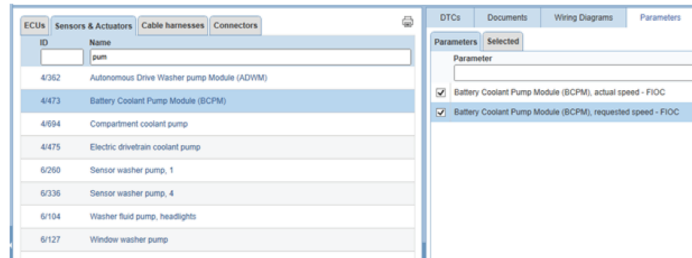
3.2.



TJ 37478

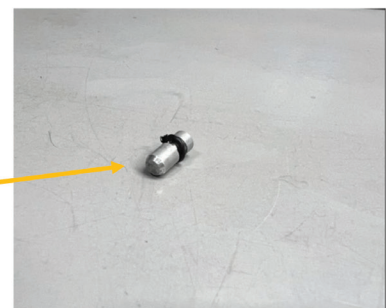
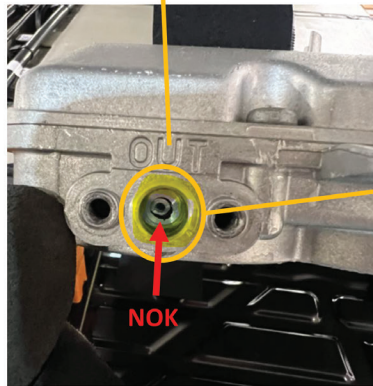
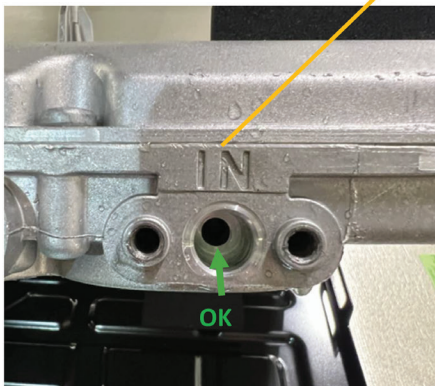
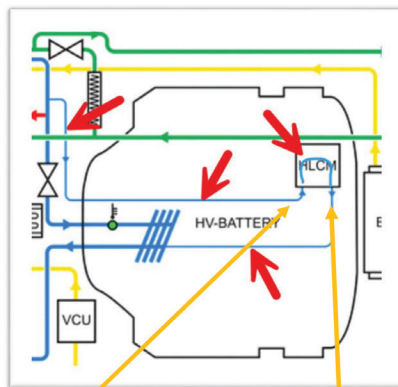
Technical Journal 37478.1.2

4.



TJ 37478

5.



TJ 37478