



Service Bulletin

Bulletin No.: PIP6033B

Date: June, 2026

PRELIMINARY INFORMATION

Subject: CVT Transmission Noise - Slip or Loss of Motion

Brand:	Model:	Model Year:		VIN:		Engine:	Transmission:
		from	to	from	to		
Buick	Encore GX	2022 - 2027		All	All	All	MRG
Chevrolet	Equinox	2025 - 2027		All	All	All	MRQ
Chevrolet	Malibu	2022 - 2025		All	All	All	MRG
Chevrolet	Trailblazer	2022 - 2027		All	All	All	MRG
GMC	Terrain	2025-2027		All	All	All	MRG

Involved Region or Country	North America
Condition	Noise from inside the transmission or transmission slipping.
Cause	Damage to the transmission pulleys (Sheaves), drive chain, or primary/secondary pulley bearings.

Correction

Some Customers may bring their vehicle with a complaint of a transmission slipping, no movement or a possible noise from inside the transmission.

These conditions may occur with or without a check engine light or DTC setting.

This condition could be caused by a damaged drive chain, damage to the primary or secondary pulleys (sheaves) or the bearings.

If the transmission is slipping, or there is a grind noise heard or there is a loss of vehicle motion the transmission drive chain and pulley surfaces should be inspected.

Prior to removing the transmission first follow Service Bulletin 20-NA-120 and use a borescope to inspect the pulleys and chain for damage.

If the pulley surfaces or damage to the chain is not clearly visible or inconclusive the transmission case should be separated to inspect the pulley surfaces and the transmission drive chain.

Note: Please refer to Emerging Issues 10224.07V on the Center of Learning website for removal of the drive pulley/chain assembly.

Note: Only remove the side cover utilizing the GM-52317 lifting tool, failure to do so could result in damage to the transmission or personal injury.

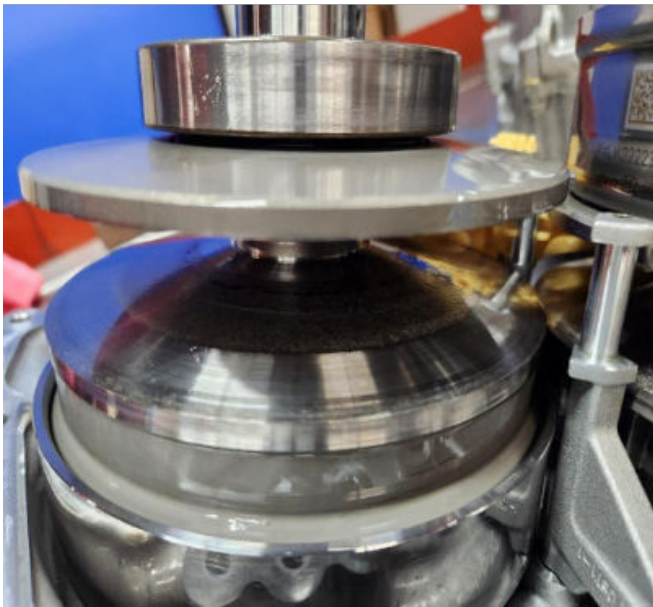


6750280

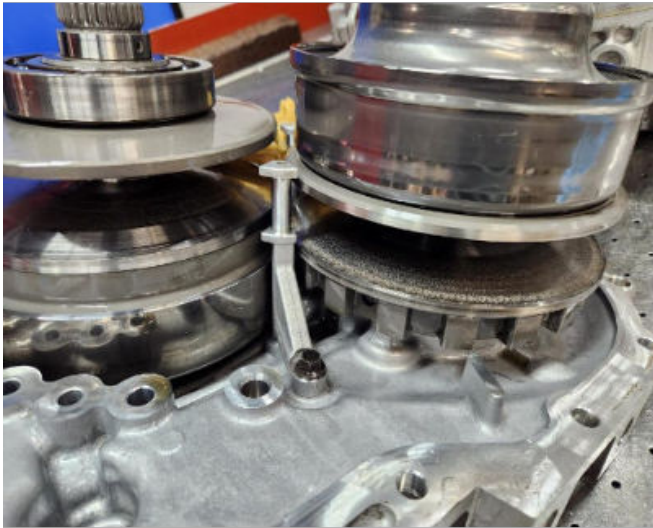
Note: Make sure the transmission is NOT in park prior to removing the pulley assembly .

Once the transmission pulley assembly has been removed the drive chain and pulleys can be inspected for damage.

Damage to the pulleys can be seen below:



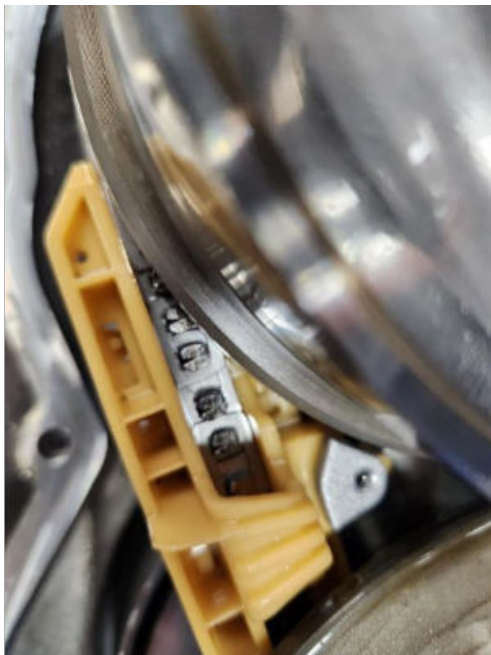
6755154



6750279

In the above pictures you can see the rough pulley surface, it is often described as having the appearance of a brake rotor that has gone metal to metal.

The pictures below show damage to the transmission drive chain and drive chain ends.

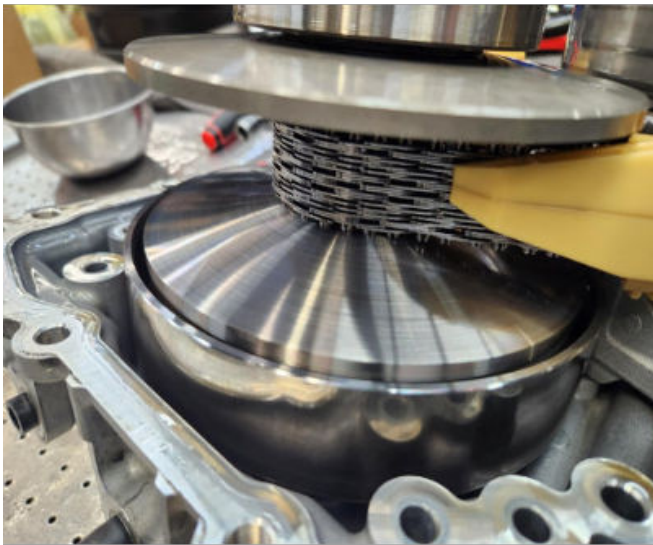


6755153



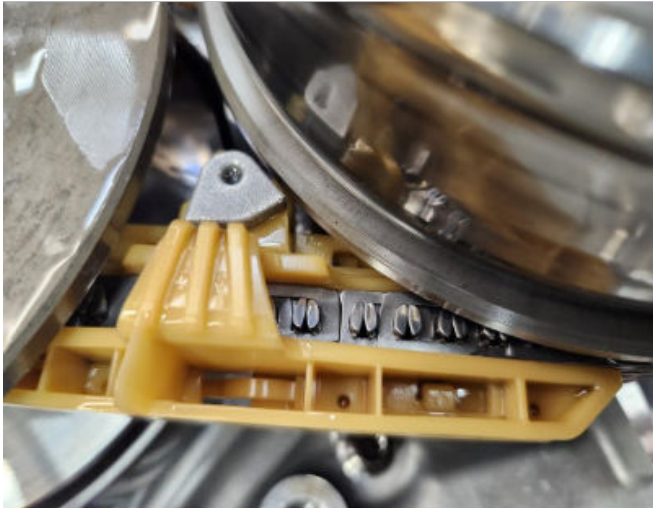
6750278

The picture below show examples of what a good pulley surface looks like, take note of the fine grooves present on the surface.



6750281

The Pictures below show examples of a good drive chain.



6750282

Take note of how the chain ends (deer hooves) have a polished appearance.

In some rare cases the chain may be broken.

When this happens when attempting to perform the inspection it may be found the transmission case cannot be removed.



6750292

If any of the above concerns are found, the transmission will require replacement.

If there is a rotational noise present the bearings on the drive pulleys will need to be inspected.

The roller bearings can be spun listening for noise, also they should be inspected.

There have been issues seen with spalling on the bearing race as seen below.



6781798

There have also been issues with the ball bearings having spalling on them as well as seen in the examples below.



6781799



6781800

Please follow the appropriate process to obtain and replace the transmission.

If there is damage present to the Tapered roller bearings on the final drive or the transfer gear these bearings and races can be replaced without transmission replacement

Version	3
Modified	12/11/2024 - Created on. 12/16/2025 - Updated Model years 06/03/2026 - Updated Model years

