		Tesla, Inc. Service Bulletin		<i>Inspect Windshield Washer Nozzle, Semi</i>	
SB-25-17-007 June 26, 2025					
Classification		Section/Group			
Campaign Bulletin		17 - Electrical		Mobile Service	
				Can Perform (where permitted)	
Configuration				All	
Model		Model Year		Country/Region	
Semi		All		North America	
				Build Location	
				Giga Nevada	
The model(s) and model year(s) listed are a general approximation of the affected VIN list. Refer to the VIN/Bulletin Tracker or Customer/Vehicle profile to determine applicability of this bulletin for a particular vehicle.					

Campaign Bulletin: This campaign bulletin addresses a non-safety-related condition and provides recommended technical diagnosis and repair procedures. Apply this procedure to the applicable vehicles.

Condition

Some Semi trucks are equipped with a windshield washer nozzle that may not meet Tesla specifications. While adequate in suppling washer fluid to the windshield, affected washer nozzles may restrict washer fluid output and increase the amount of wiper cycles needed to remove debris and contaminates.

Correction

Inspect the vehicle for symptoms related to the condition. If symptoms are present, replace the windshield washer nozzle with an updated part.

Correction Description	Correction	Time
Inspect Windshield Washer Nozzle; No Repair Needed	S012517007	0.06
Inspect And Replace Windshield Washer Nozzle	S022517007	0.18

Part Number	Description	Quantity
Part Necessary — — —		
This part number was current at the time of publication. Use the revision listed or later, unless otherwise specified in the Parts Catalog .		
Special Tools	1080589-00-A	TIRE CHOCK (SET OF 4)
If Necessary	1115095-00-B	SKT, 3/8" DR, DEEP, 15MM
	1965406-00-A	TORQUE WRENCH, DIGITAL+ANGLE, 3/8" DR, FLEX HEAD, 13.5~135Nm
	1058696-00-B	WIPER ARM REMOVAL TOOL
Shop Supplies —		
If Necessary Nozzle Wet Wiper Arm (GS-103-20)		

Procedure

1. While observing the washer nozzles at the center of the windshield wiper blade, press and hold the windshield washer button (Figures 1 and 2).

⚠ CAUTION: Make sure the windshield is free of debris and that the operator's line of sight is clear.

📋 NOTE: The windshield wiper blade will cycle one time across the windshield and return to its original position when the washer button is released.

ℹ TIP: If necessary, record a video of the windshield wiper to aid with the inspection.



Figure 1

2. Verify the number of windshield washer nozzle jet streams that spray on the windshield.
 - If four windshield washer nozzle jet streams spray on the windshield (Figures 2 and 3), skip to step 9.

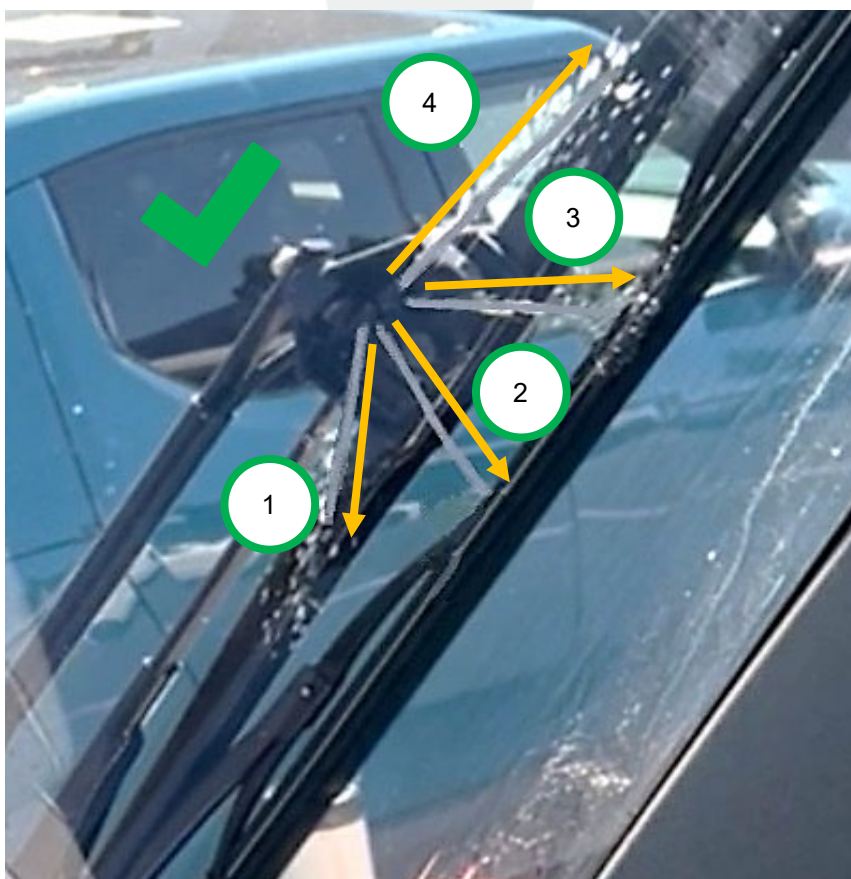


Figure 2 – Four windshield washer nozzle jet streams

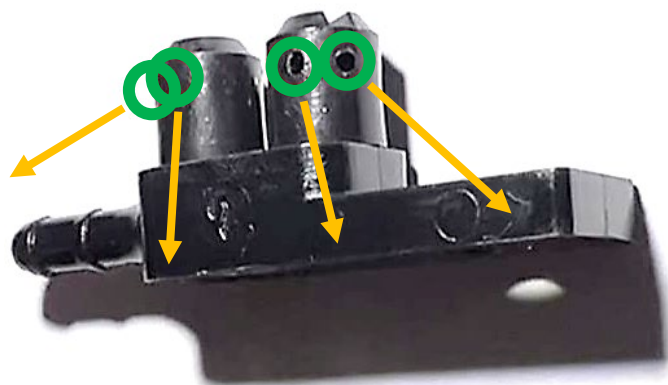


Figure 3 – Correct windshield washer nozzle

- If two windshield washer nozzle jet streams spray on the windshield (Figures 4 and 5), continue to step 3.

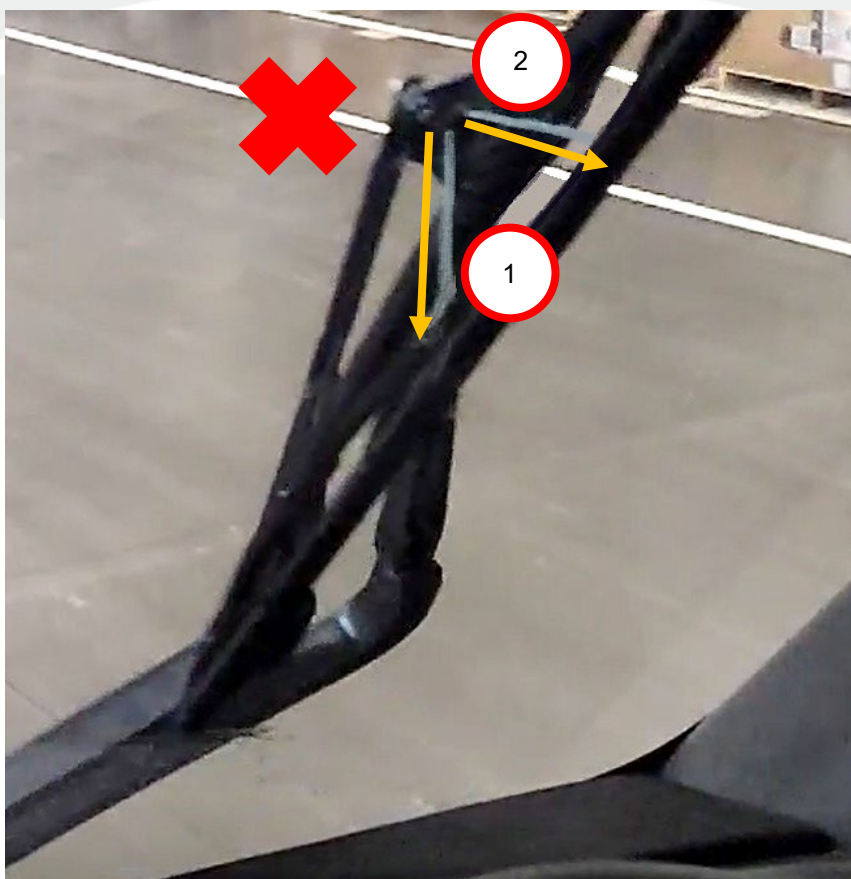


Figure 4 – Two windshield washer nozzle jet streams

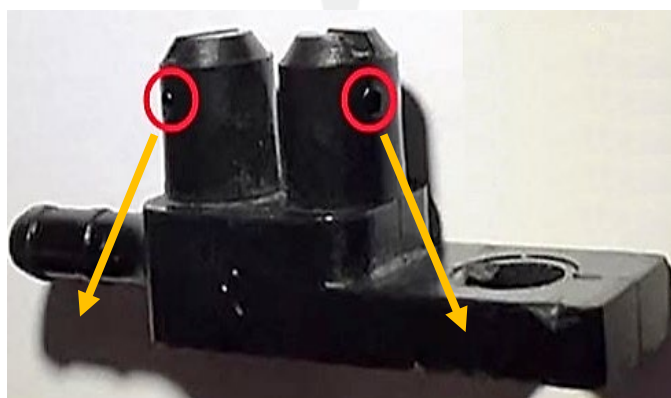


Figure 5 – Incorrect windshield washer nozzle

3. Remove the wiper arms (refer to Service Manual procedure [1750020022](#)).

⚠ WARNING: Do not attempt to service the windshield washer nozzle while the wiper arms are still installed on Semi.

4. Remove the windshield washer nozzle from the wiper arms.

📋 NOTE: Note how the washer nozzle is oriented, to aid with reinstallation later in this procedure.

- a. Use a small flathead screwdriver to release the locking tab that attaches the windshield washer nozzle to the wiper arms, and then remove the washer nozzle from the wiper arm housing (Figures 6–8).

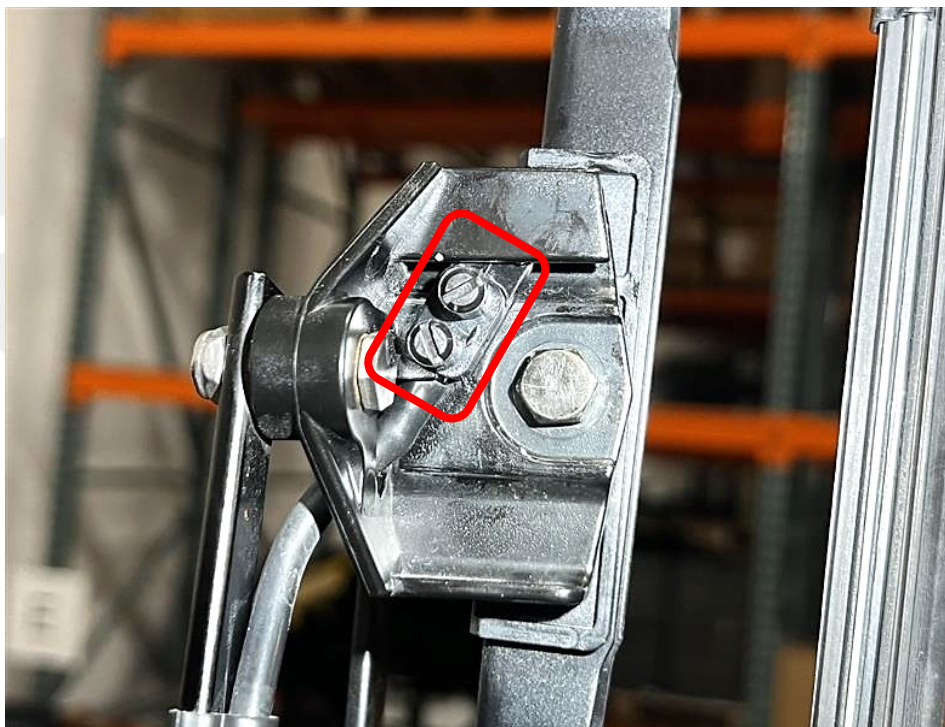


Figure 6 – Windshield washer nozzle location

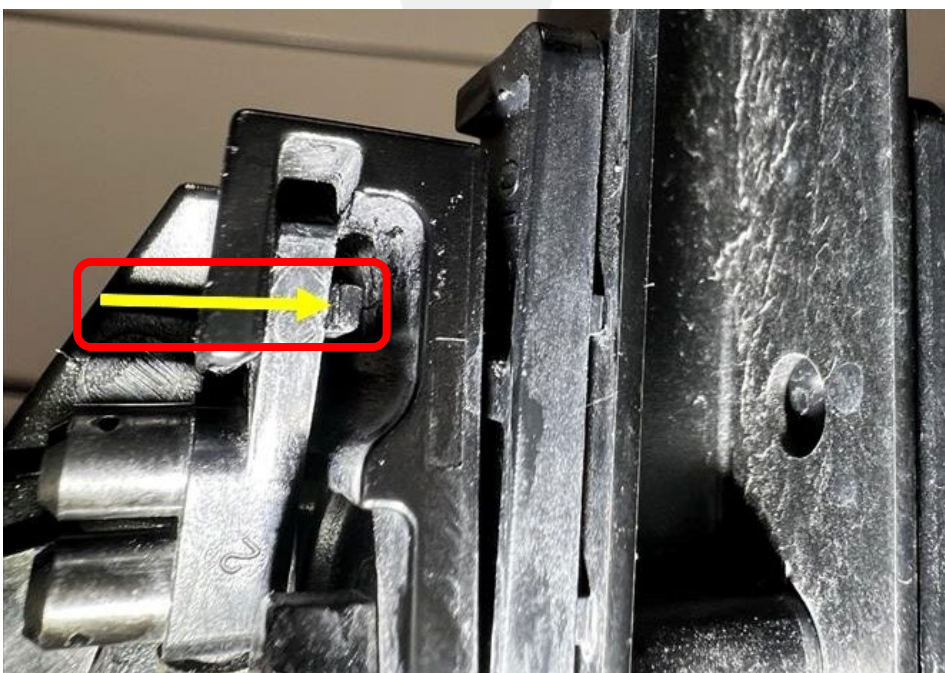


Figure 7 – Locking tab

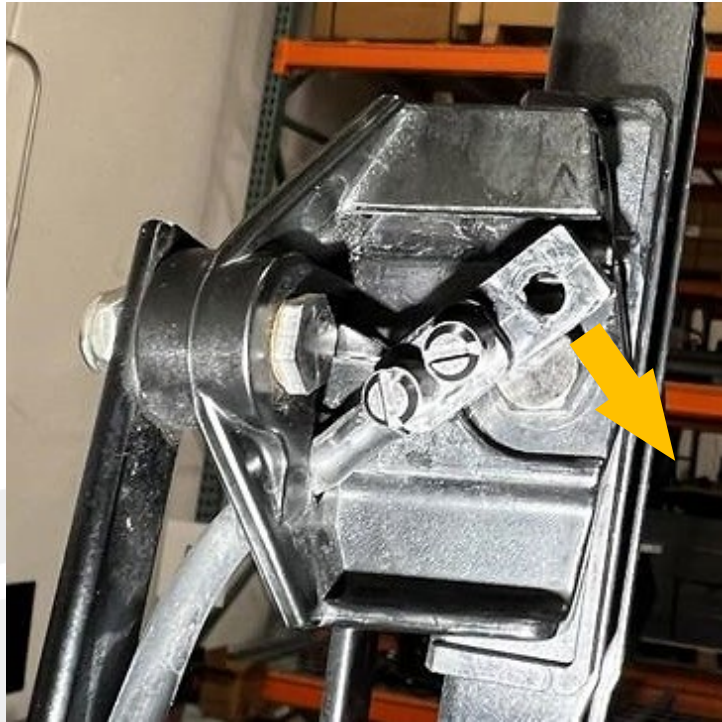


Figure 8

- b. Disconnect the windshield washer nozzle hose from the washer nozzle (Figure 9).

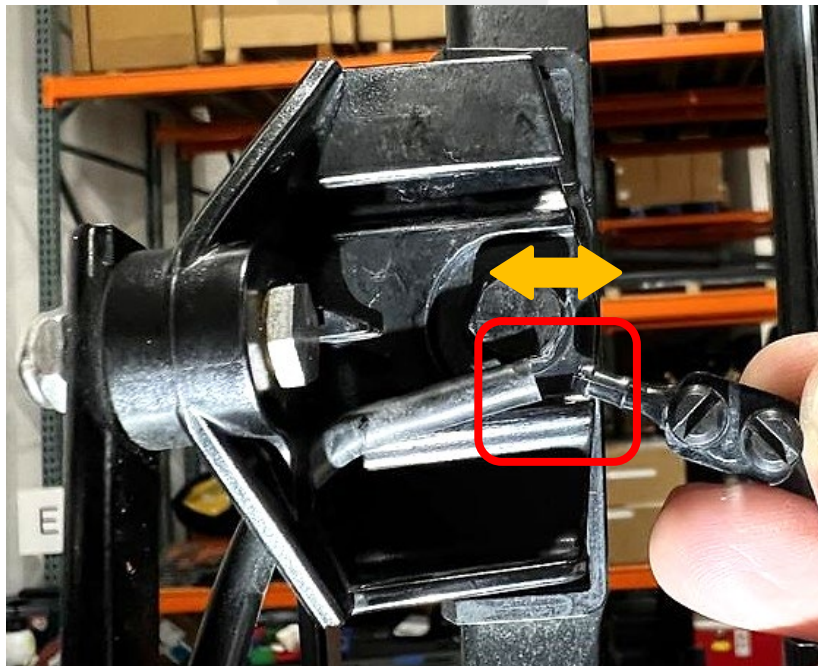


Figure 9

- c. Remove the windshield washer nozzle from the vehicle (Figure 10).



Figure 10

5. Prepare the new windshield washer nozzle for installation.

- a. Use a flathead screwdriver to rotate the windshield washer nozzle caps (x2) as shown in Figure 11 (red).



NOTE: The washer nozzle caps can spin freely in both clockwise and counterclockwise directions. Make a note of this for the following steps and rotate the caps **using the least amount of distance required**.

- For the cap closest to the washer nozzle mounting hole (Figure 11, blue), the washer nozzle jet stream must be pointed $30^\circ \pm 3^\circ$ clockwise from the centerline (Figure 11, orange) of the washer nozzle (Figure 12).
- For the cap closest to the washer nozzle barb (Figure 11, green), the washer nozzle jet stream must be pointed $50^\circ \pm 3^\circ$ counterclockwise from the centerline of the washer nozzle (Figure 12).

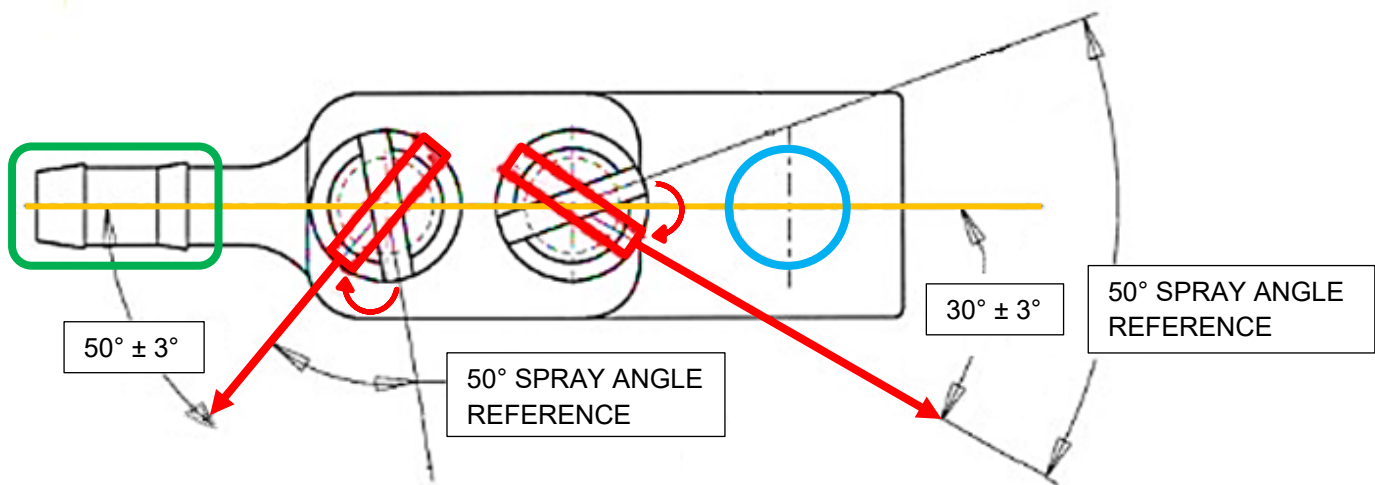


Figure 11



Figure 12 – Correct windshield washer nozzle cap positions and jet stream spray directions

6. Perform steps 4.a through 4.c in the reverse order to install the new windshield washer nozzle on the vehicle.
7. Install the wiper arms (refer to Service Manual procedure [1750020022](#)).
8. While observing the washer nozzles at the center of the windshield wiper blade, press and hold the windshield washer button (Figures 1 and 2).
- If four windshield washer nozzle jet streams spray on the windshield (Figures 2 and 3), skip to step 9.
 - If two windshield washer nozzle jet streams spray on the windshield (Figures 4 and 5), create and escalate a Toolbox session for additional support, and then continue to step 9.
9. Fill the windshield washer fluid tank with new fluid as required.
10. Clean any excess windshield washer fluid from the vehicle.
11. Close out this document using the appropriate correction code based on the repair(s) performed.