		Tesla, Inc. Service Bulletin		<i>Rework Glove Box</i>
SB-25-14-001 June 12, 2025				
Classification		Section/Group	Mobile Service	
Repair Bulletin		14 - Instrument Panel	Can Perform (where permitted)	All
Model	Model Year	Country/Region	Build Location	
Model Y	2025	United States	Fremont	
The model(s) and model year(s) listed are a general approximation of the affected VIN list. Refer to the VIN/Bulletin Tracker or Customer/Vehicle profile to determine applicability of this bulletin for a particular vehicle.				


Repair Bulletin: This repair bulletin provides instructions on addressing a possible customer concern regarding the operation of Tesla vehicles. These instructions should only be performed by trained professionals.

Condition

On certain Model Y vehicles, the glove box might not open because the retention force of the magnets in the glove box door is too strong due to the airgap between the magnets being too small.

Correction

Rework the glove box.

 **NOTE:** If this bulletin is applicable to the vehicle, perform the correction without any need for inspection.

Correction Description	Correction	Time
Rework Glove Box	S012514001	0.18

	Part Number	Description	Quantity
Parts Required	2213074-00-A	0.4mm PET HARD SHIM	2
	<small>This part number was current at the time of publication. Use the revision listed or later, unless otherwise specified in the Parts Catalog.</small>		
Special Tools	2218504-00-A	Plastic Razor	

Procedure

1. Open the front passenger door.
2. On the vehicle touchscreen, navigate to **Controls** → **Glovebox** to open the glove box door. If the glove box does not open, carefully use 2 plastic trim tools (Figure 1) to pry the door open.

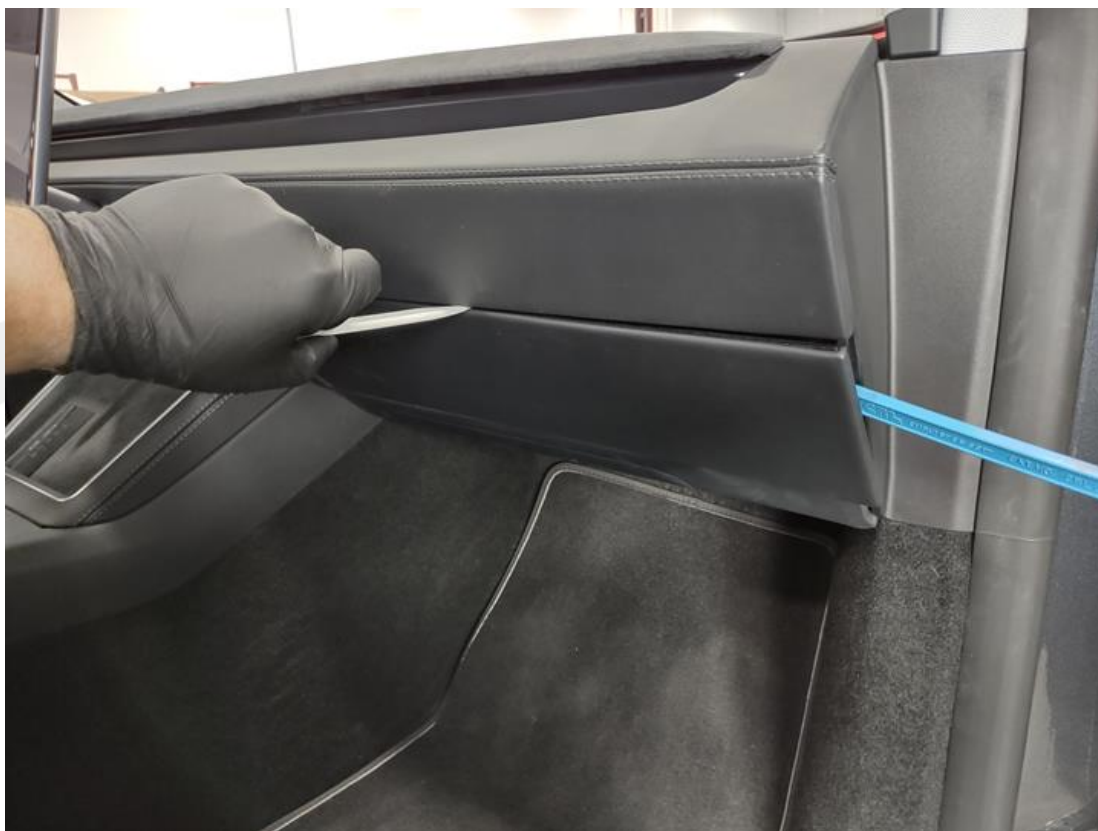


Figure 1

3. Use the corner of the plastic razor (PN: 2218504-00-A) to make an incision through the foam layer on the glove box door magnets (x2) (Figures 2–5).

⚠ WARNING: Make sure to wear cut resistant gloves while performing this step.



Figure 2



Figure 3



Figure 4

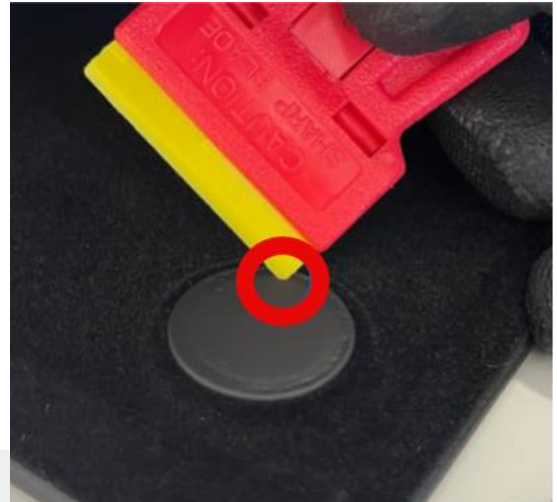


Figure 5 – Use the corner of the plastic razor to make an incision in the foam

4. Use the long edge of the plastic razor to remove the foam from the glove box door magnets (x2) (Figures 6 and 7), and then remove the remaining foam with fingers (Figure 8).

⚠ WARNING: Make sure to wear cut resistant gloves while performing this step.



Figure 6



Figure 7

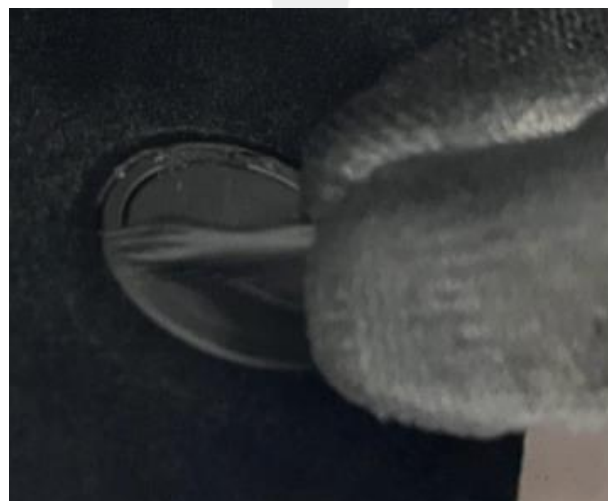


Figure 8

5. Use the corner of the plastic razor to remove any remaining foam from the glove box door magnets (x2) (Figures 9–11).

⚠ WARNING: Make sure to wear cut resistant gloves while performing this step.

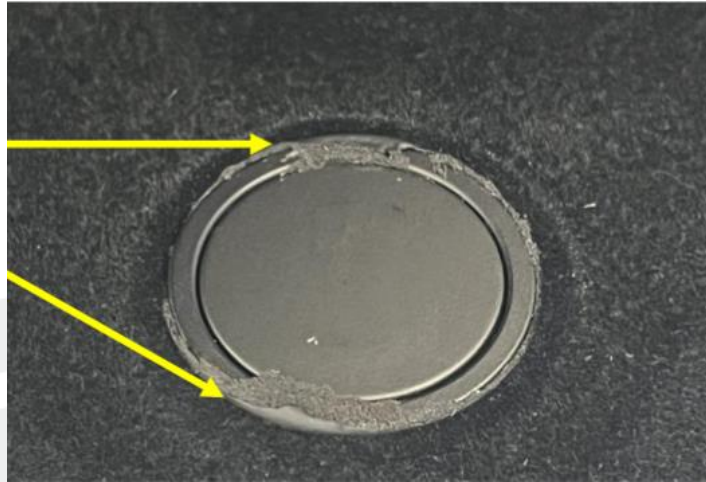


Figure 9 – Any remaining foam must be removed



Figure 10



Figure 11

6. Use IPA wipes to clean any remaining foam from the glove box door magnets. Allow the IPA 1 minute to dry.
7. Use IPA wipes to clean the surface of the magnets on the glove box side (Figures 12 and 13). Allow the IPA 1 minute to dry.





Figure 12




Figure 13

8. Remove the shims from the adhesive backing roll, and then install the shims (x2) onto the magnets (x2) on the glove box side (Figures 12 and 13).

 **CAUTION:** DO NOT use 24mm shims (PN: 2223223-00-A) in this location for this rework. Using 24mm shims in this location will cause the glove box to fail to open.

 **CAUTION:** Do not install these shims on the glove box door magnets (Figures 2 and 3).

 **NOTE:** Make sure the shim is correctly aligned. Once aligned, apply firm pressure to the shim to ensure adhesion.

9. Close the glove box door, and then use the touchscreen to verify that the glove box opens correctly.
10. Once glove box functionality has been verified, close the glove box door.
11. Close the front passenger door.

