

General Service Bulletin (GSB):	Diesel Remanufactured Component Identification
GSB Overview:	This bulletin helps with identification of remanufactured diesel engines and components.
NOTE: This information is not intended to replace or supersede any warranty, parts and service policy, Work Shop Manual (WSM) procedures or technical training or wiring diagram information.	



## Diesel Remanufactured Component Identification

### Purpose:

Many diesel service parts are now only available as remanufactured parts. However, during warranty parts reviews, some components from service part warranty (SPW) claims for these remanufactured parts are found to be original equipment components (not remanufactured). It is the dealer's responsibility to verify the part meets service part warranty (SPW) time/mileage criteria and matches the part from the customer paid repair or invoice. If the original repair order or invoice shows a part with a suffix ending in "RM", the part returned from the service part warranty claim must be identifiable as remanufactured.

For example, a remanufactured injector previously replaced in cylinder #6 must be the part being considered for SPW coverage and not one of the other original seven injectors. Parts personnel, likewise, must review over-the-counter parts being considered for SPW to ensure they are remanufactured.

The following pictures illustrate how to determine whether or not diesel parts are remanufactured. Dealer parts and service personnel should use this aid to ensure parts considered for SPW coverage are indeed remanufactured and not from the original engine.

**Incorrect returned parts are subject to claim chargeback.**

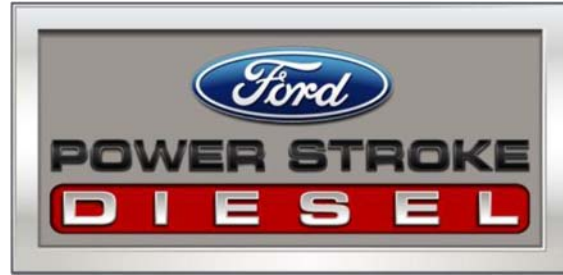
## Diesel Remanufactured Component Identification



### Table of Contents

6.4L Diesel Fuel Injectors.....	3
6.0L Diesel Fuel Injectors.....	4
7.3L Diesel Fuel Injectors.....	5
6.4L Diesel Turbochargers.....	6-8
6.0L Diesel Turbochargers and CHRAs.....	9, 10
6.4L Diesel High Pressure Fuel Pumps.....	11
6.0L & 4.5L Diesel High Pressure Oil Pumps (05-10MY).....	12
6.0L Diesel High Pressure Oil Pumps (03-04MY).....	13
7.3L Diesel High Pressure Oil Pumps.....	14
6.0L & 6.4L Diesel Cylinder Heads.....	15
6.0L Diesel Fuel Injection Control Modules (FICMs).....	16
6.0L Diesel EGR Valves.....	17
6.4L/6.0L/4.5L Diesel Engines .....	18
7.3L Diesel Engines.....	19

## Diesel Remanufactured Component Identification

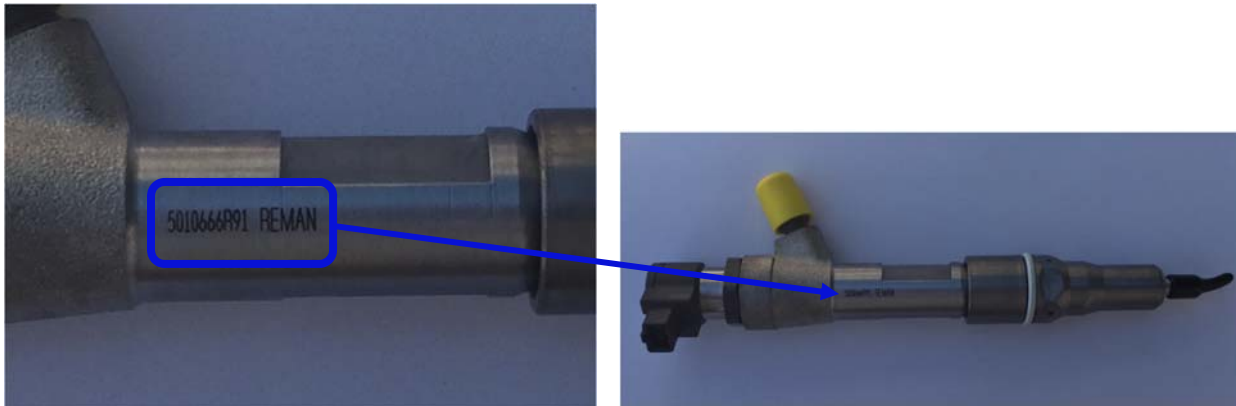


### 6.4L Diesel Fuel Injector

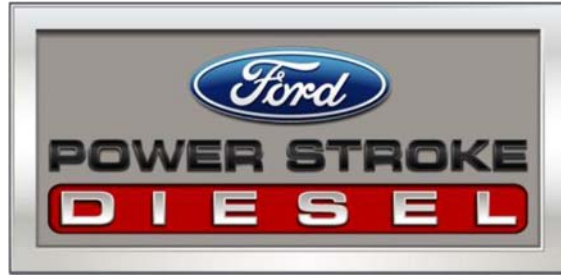
Part Number

8C3Z-9E527-DRM

Remanufactured 6.4L diesel fuel injectors will have the supplier part number 5010666R91 followed by "REMAN" laser etched on the injector body.



## Diesel Remanufactured Component Identification

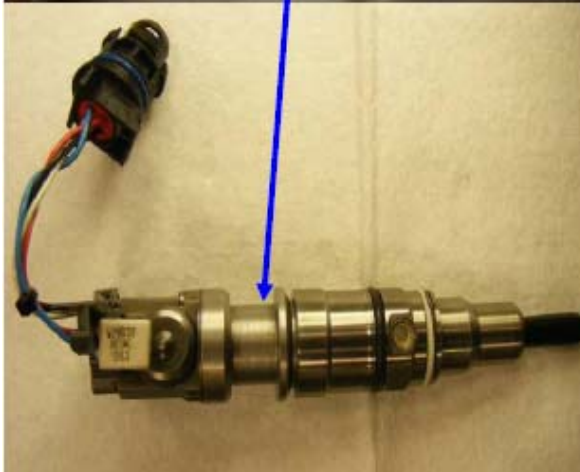
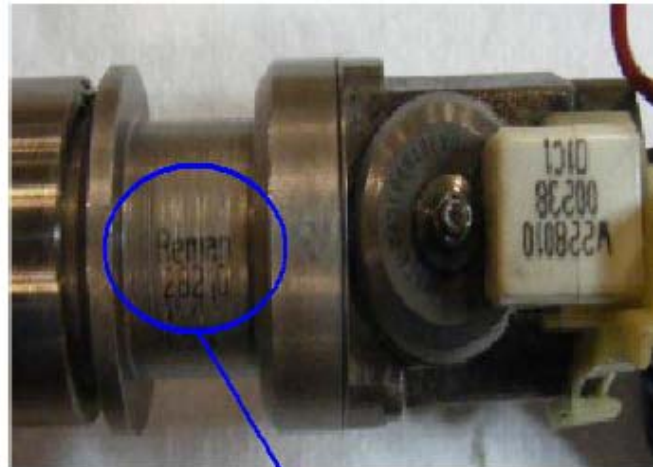


### 6.0L Diesel Fuel Injector

Part Numbers

4C3Z-9E527-BRM 3C3Z-9E527-ECRM

Remanufactured 6.0L fuel injectors will have "REMAN" or "Rmn04" followed by the serial number laser etched on the injector body.



## Diesel Remanufactured Component Identification



### 7.3L Diesel Fuel Injector

#### Part Numbers

5C3Z-9VE527-BRM      F61Z-9VE527-BRM

5C3Z-9VE527-ARM      F61Z-9VE527-ERM

F4TZ-9VE527-AARM

Remanufactured 6.0L diesel fuel injectors will have "R" on the solenoid cover and "REMAN" underneath.

Note: There are no serviceable components inside of the injector; the injector solenoid should not be disassembled.



## Diesel Remanufactured Component Identification



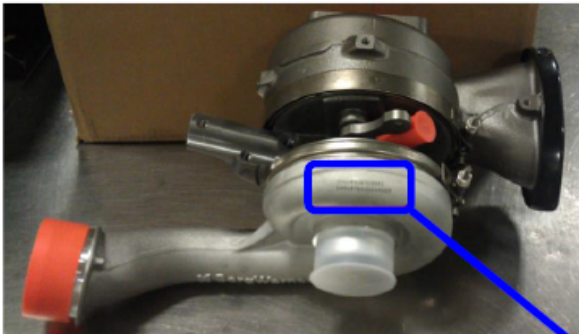
### 6.4L Diesel Turbochargers

#### Part Numbers

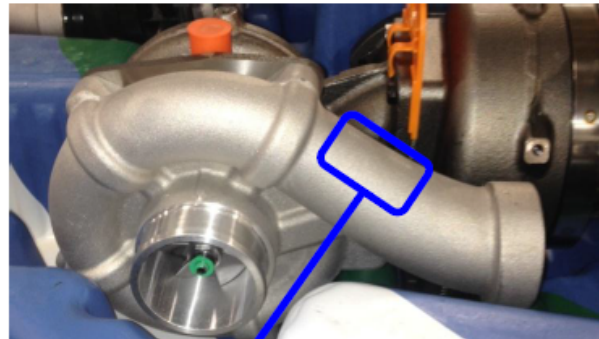
8C3Z-6K682-AARM (LP) 8C3Z-6K682-BARM (HP)

Remanufactured 6.4L diesel individual high-pressure and low-pressure turbochargers will have "P4" imprinted on the top line of the compressor cover.

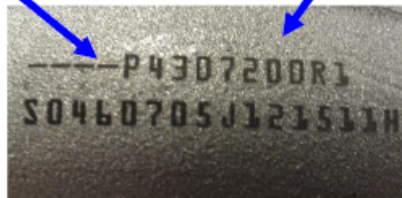
High Pressure



Low Pressure



"P" field in top line of marking is the BorgWarner part number.  
A "4" after the P designates a Reman assembly  
A "1" after the P designates a New assembly  
The field beginning with an "S" is BorgWarner's serialization of the turbo





## Diesel Remanufactured Component Identification



### 6.4L Diesel Turbochargers Continued

Part Numbers

8C3Z-6K682-CRM (Dual Stage)

Remanufactured 6.4L diesel dual stage turbochargers can have two different remanufactured tags. For turbochargers remanufactured prior to November 2016, there will be a white tag located on the back of the compressor housing. The tag contains the word "REMANUFACTURED" as well as the supplier part number and remanufactured serial number.



## Diesel Remanufactured Component Identification

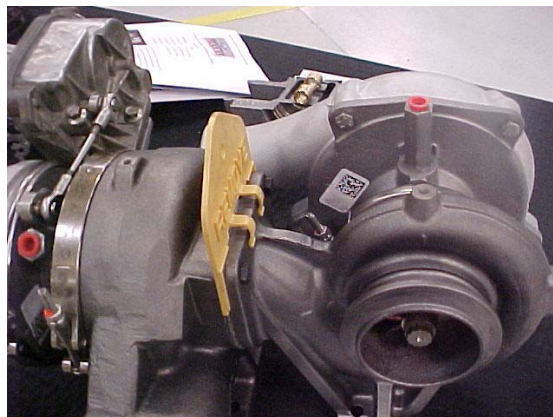
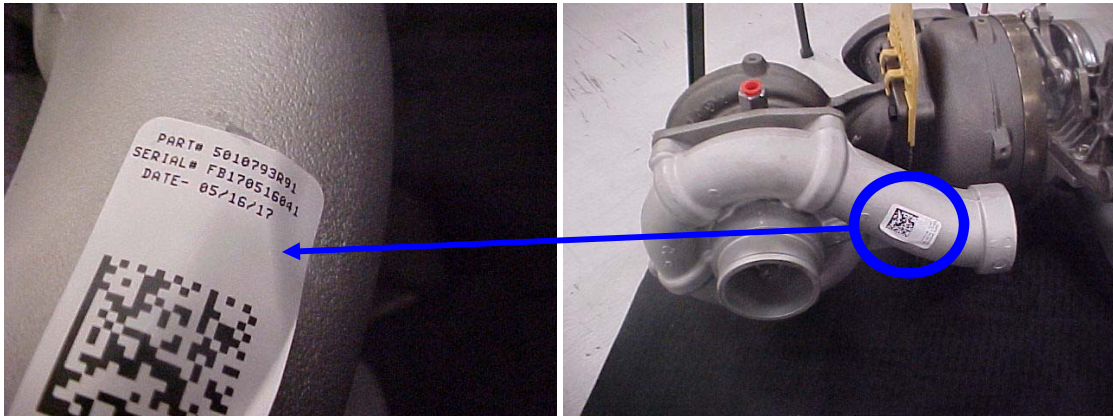


### 6.4L Diesel Turbochargers Continued

Part Numbers

8C3Z-6K682-CRM (Dual Stage)

Remanufactured 6.4L diesel dual stage turbochargers remanufactured after November 2016 will have white tags located on the back of the compressor housing and the compressor cover outlet on both HP and LP turbochargers. The new tag contains the supplier part number, remanufactured serial number, build date, and a QR code.





## Diesel Remanufactured Component Identification



### 6.0L Diesel Turbochargers and CHRAs

#### Part Numbers

Turbochargers	CHRAs
3C3Z-6K682-CCRM	3C3Z-9G489-ABRM
4C3Z-6K682-CDRM	3C3Z-9G489-BBRM
5C3Z-6K682-CCRM	4C3Z-9G489-ACRM
4C4Z-6K682-ARM	5C3Z-9G489-ACRM
5C4Z-6K682-BRM	



6.0L diesel turbochargers and CHRA assemblies remanufactured before November 2016 will have a remanufactured tag located on the back of the compressor housing. The tag contains the word "REMANUFACTURED" as well as the supplier part number and remanufactured serial number.



## Diesel Remanufactured Component Identification



### 6.0L Diesel Turbochargers and CHRAs

#### Part Numbers

Turbochargers	CHRAs
3C3Z-6K682-CCRM	3C3Z-9G489-ABRM
4C3Z-6K682-CDRM	3C3Z-9G489-BBRM
5C3Z-6K682-CCRM	4C3Z-9G489-ACRM
4C4Z-6K682-ARM	5C3Z-9G489-ACRM
5C4Z-6K682-BRM	

6.0L diesel turbochargers and CHRA assemblies remanufactured after November 2016 will have a remanufactured tag located on the VGT bore. The new tag contains the supplier part number, remanufactured serial number, build date, and a QR code.



## Diesel Remanufactured Component Identification

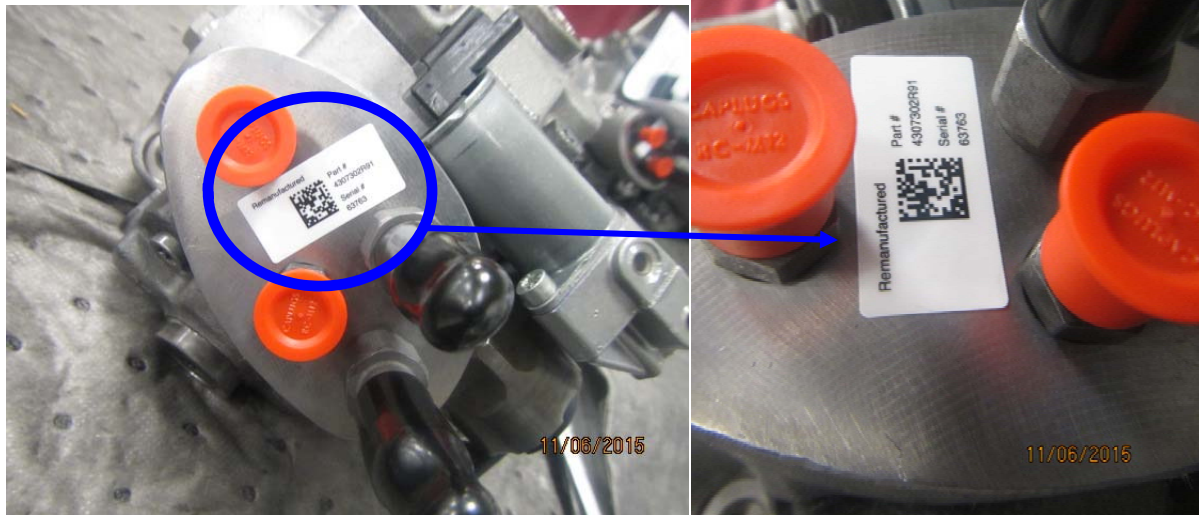


### 6.4L Diesel High Pressure Fuel Pump

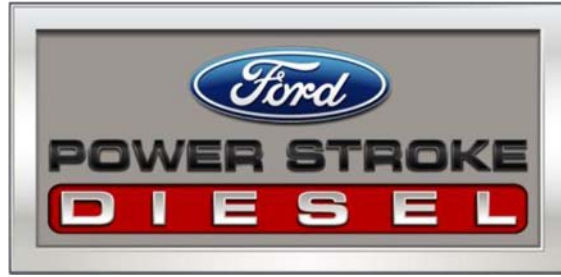
Part Number

8C3Z-9A543-DRM

Remanufactured 6.4L diesel high-pressure fuel pumps will have a remanufactured tag located on the top of the pump body. The tag contains the word "REMANUFACTURED" as well as the supplier part number, remanufactured serial number, and QR code.



## Diesel Remanufactured Component Identification



### 6.0L/4.5L Diesel High Pressure Oil Pumps (05-10MY)

#### Part Numbers

6E7Z-9A543-BRM

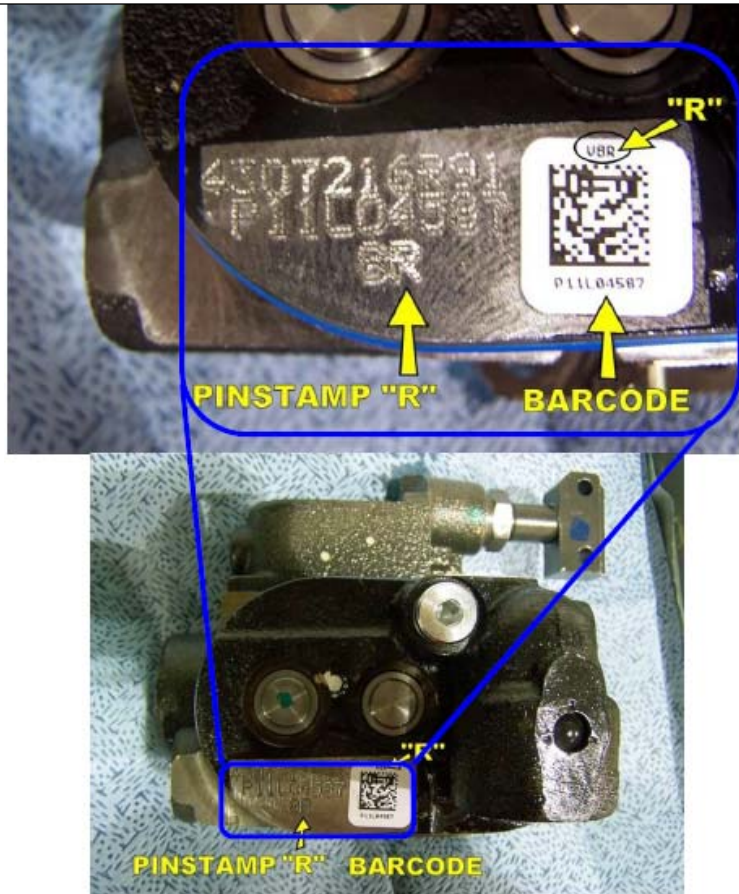
5C3Z-9A543-ARM

8E7Z-9A543-CRM

5C4Z-9A543-ERM

RH Sheppard Remanufactured 6.0L/4.5L diesel high-pressure oil pumps will have several features to identify them as remanufactured:

1. White Bar Code Label: Either "V8R" or "V6R"
2. Pin stamp "R": Either "8R" or "6R"





## Diesel Remanufactured Component Identification



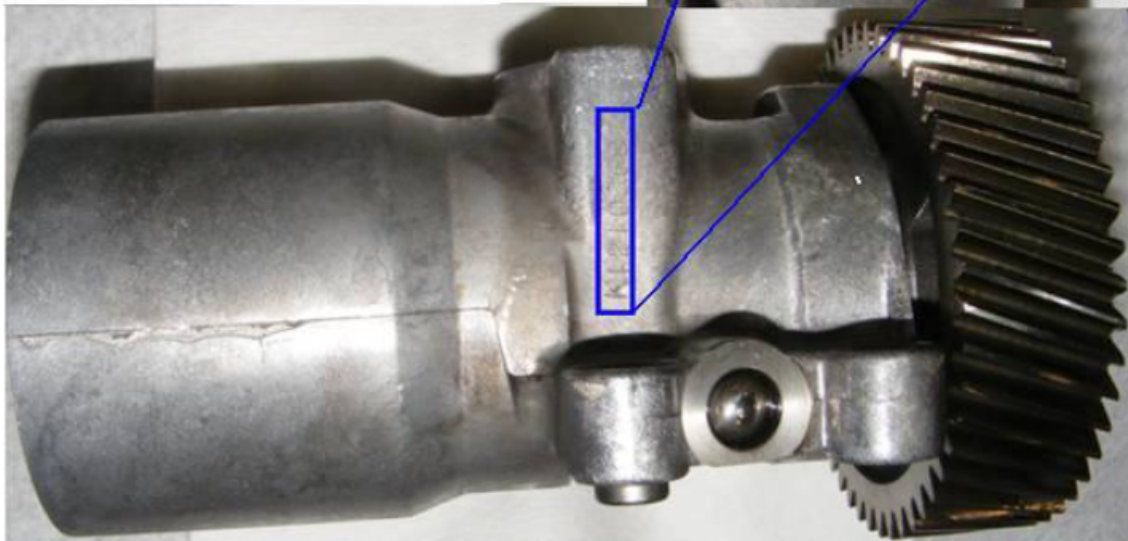
### 6.0L Diesel High Pressure Oil Pumps (03-04MY)

#### Part Numbers

3C3Z-9A543-AARM

4C3Z-9A543-AARM

Remanufactured 6.0L diesel high-pressure oil pumps will have a serial number stamped on the pump body housing. Additionally, "REMANUFACTURED" may be stamped on the rear cover. As well as "OS" on the rear cover indicating an oversized rear cover plate.





## Diesel Remanufactured Component Identification



### 7.3L Diesel High Pressure Oil Pumps

#### Part Numbers

F81Z-9A543-CRM

F6TZ-9VA543-ARM

5C3Z-9VA543-BRM

F4TZ-9VA543-AARM

Remanufactured 7.3L diesel high-pressure oil pumps built prior to August 2015 will have a remanufactured tag located on the top side of the pump body. The tag contains the word "REMANUFACTURED" as well as the supplier part number, batch number, and QR code.

Remanufactured 7.3L diesel high-pressure oil pumps built after August 2015 will have a pin stamped serial number located on the top side of the pump body where the remanufactured tag was previously placed.

< August, 2017



August, 2017 <



## Diesel Remanufactured Component Identification



### 6.0L & 6.4L Diesel Cylinder Heads

#### Part Numbers

6.0L	6.4L
3C3Z-6049-ARM	8C3Z-6049-ARM
6C3Z-6049-DRM	

Remanufactured 6.0L & 6.4L diesel cylinder heads will be stamped with the batch number and date code at the rear of the casting.

Note – These stampings will be present on remanufactured service heads, as well as remanufactured engines.



## Diesel Remanufactured Component Identification



### 6.0L Diesel Fuel Injection Control Modules (FICMs)

#### Part Numbers

##### Complete

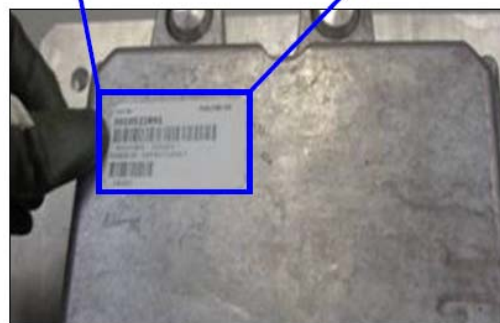
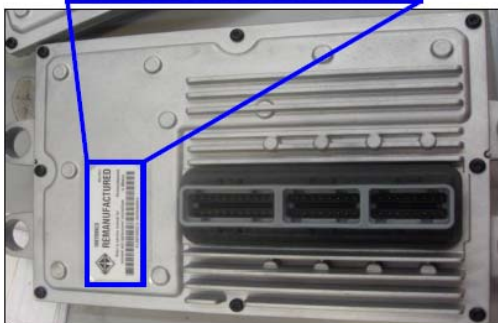
4C3Z-12B599-ABRM  
4C3Z-12B599-CRM  
HC3Z-12B599-CRM  
4C3Z-12B599-DRM  
4C3Z-12B599-ERM

##### Half-Shell

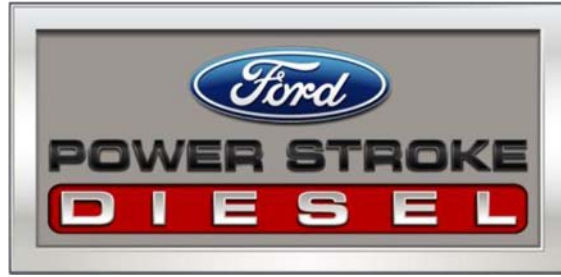
4C3Z-12B599-BARM

Remanufactured 6.0L diesel complete FICMs (programmed and non-programmed) contain a unit label on the front side of the case with the word "REMANUFACTURED" and component number "4307###R#"

Remanufactured 6.0L diesel FICM half-shells contain a unit label on the backside of the case with the component number "1887###C#".



## Diesel Remanufactured Component Identification



### 6.0L Diesel Exhaust Gas Recirculation Valves (EGR)

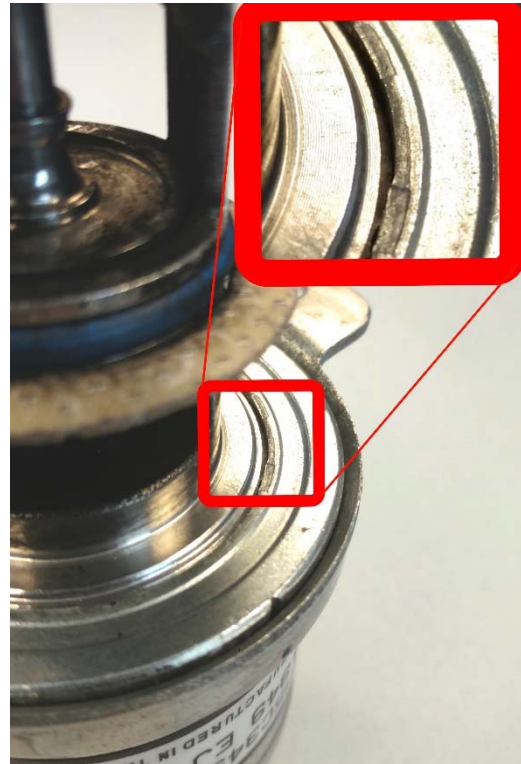
#### Part Numbers

4C3Z-9F452-ARM

5C3Z-9F452-ARM

Remanufactured 6.0L diesel EGR valves will have a remanufactured tag located on the side of the EGR can. The tag contains the Ford Production part number, batch number, and the words "REMANUFACTURED IN THE USA."

Note: A remanufactured EGR valve can also be identified by the stake marks on the valve tube housing.





## Diesel Remanufactured Component Identification



### 6.4L/6.0L/4.5L Diesel Engines

#### Base Numbers

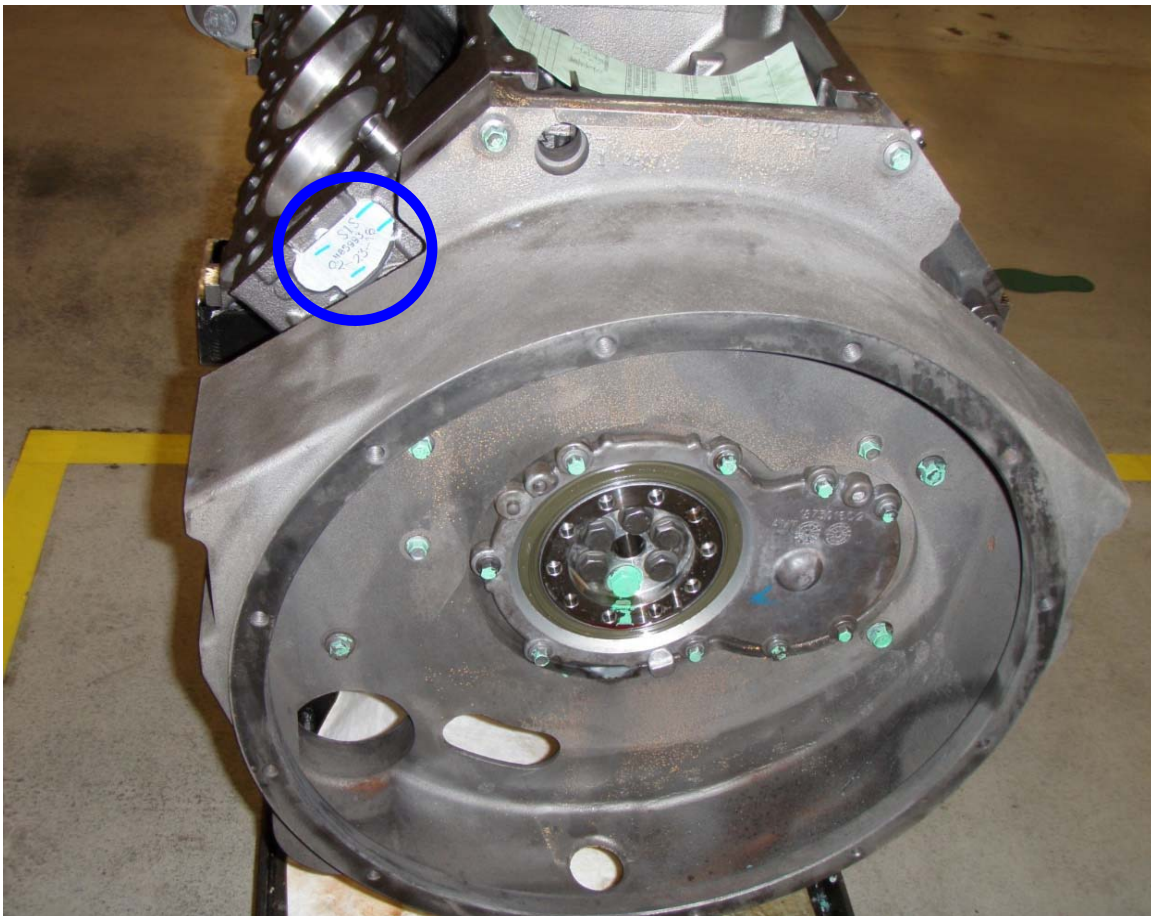
\*6007\*

\*6006\*

\*6012\*

\*6009\*

Remanufactured 6.4L/6.0L/4.5L diesel engines of any trim level have the remanufactured engine serial number and build date stamped on the rear drive side of the crankcase.





## Diesel Remanufactured Component Identification



### 7.3L DIT Diesel Engines

#### Base Numbers

*6V007*	*6V006*	*6V012*	*6V009*
*6007*	*6006*	*6012*	*6009*

Remanufactured 7.3L DIT diesel engines of any trim level have the remanufactured engine serial number and build date stamped on the drive side of the crankcase next to the oil cooler.

