

General Service Bulletin (GSB):	1.5L GTDI Coolant Consumption
GSB Overview:	This document provides information regarding the coolant consumption causes for the 1.5L Gasoline Turbo Direct Injected (GTDI) engines
NOTE: This information is not intended to replace or supersede any warranty, parts and service policy, Work Shop Manual (WSM) procedures, technical training or wiring diagram information.	

Overview:

Identification of the root cause of coolant consumption on 1.5L GTDI is key to assuring proper repair.

- Inspect the cylinder deck surface for dents or impressions. Figure 1.

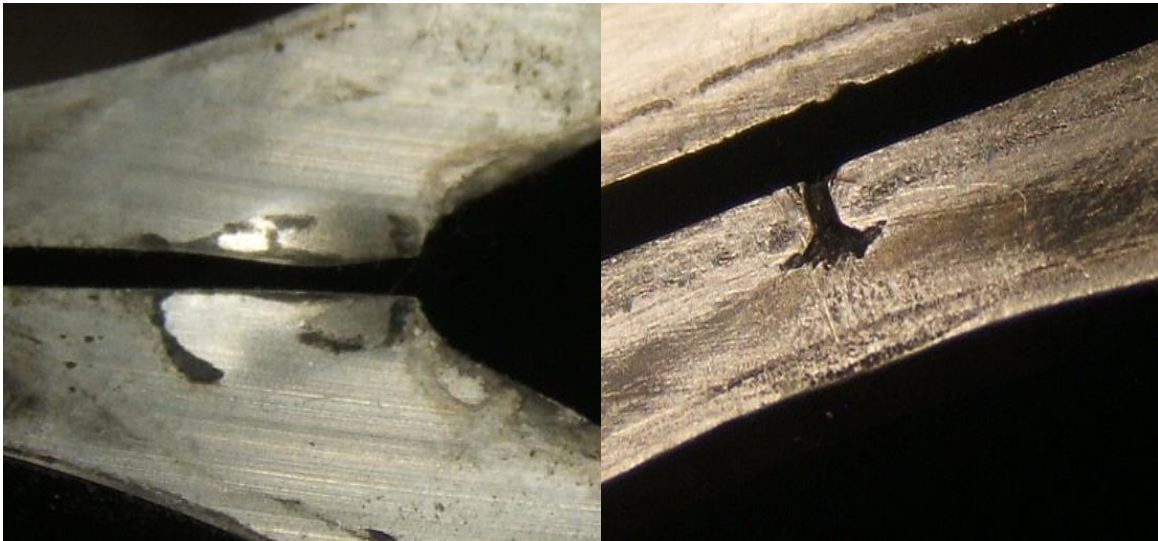


Figure 1

1.5L GTDI Coolant Consumption

- Inspect the cylinder head and block for warpage, cracks, surface impressions and collapsed saw cuts between the cylinder bores. Figure 2
- Follow Workshop Manual section 303-01 for further diagnostic aides.

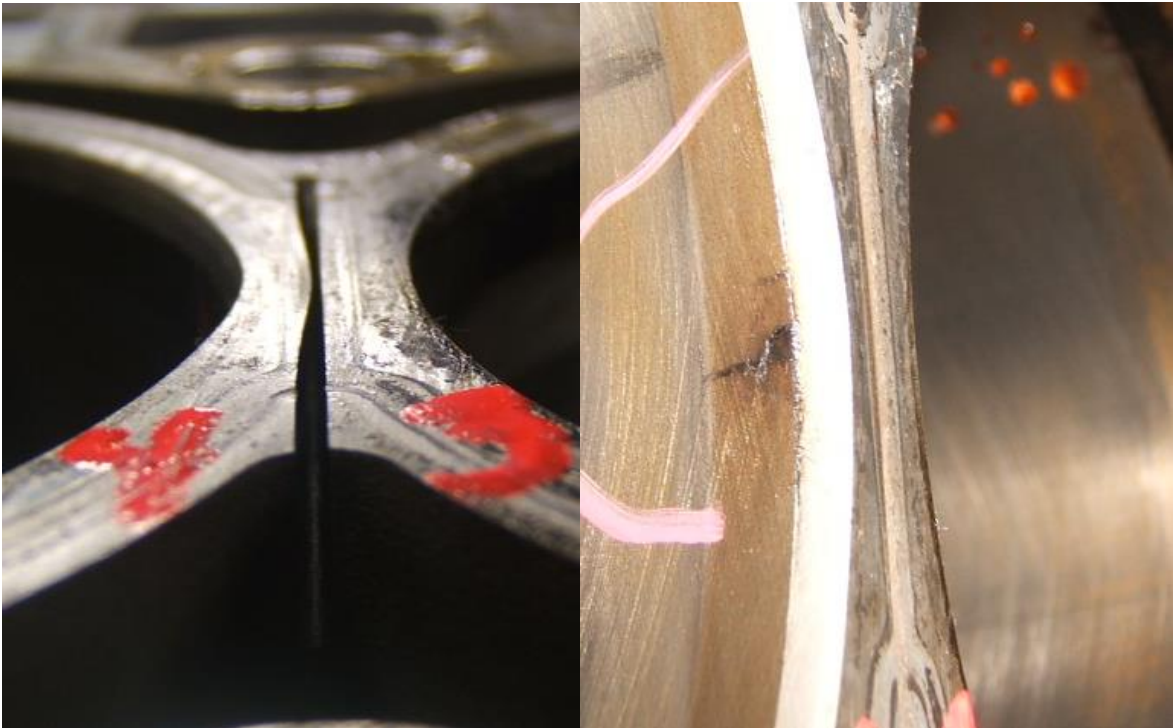


Figure 2

1.5L GTDI Coolant Consumption

- **If any of these conditions are present during the inspection, a long block assembly is the lowest service repair.**
- **Please note, it is the responsibility of the technician to perform the inspections outlined in the workshop manual section 303- 03A > Diagnosis and Testing > Engine Cooling > Inspection and Verification and workshop manual section 303-01A Engine system - General Information. This ensures that there are no drivability concerns outside of the engine that could lead to a repeat repair.**