

General Service Bulletin (GSB):	Focus Electric – High Voltage Battery Pack Repair Process
GSB Overview:	This bulletin assists dealership with following the HV Battery Repair Process which is required when high voltage battery replacement is directed by Workshop Manual.
NOTE: This information is not intended to replace or supersede any warranty, parts and service policy, Work Shop Manual (WSM) procedures or technical training or wiring diagram information.	

Focus Electric – High Voltage Battery Pack Repair Process

- Once the High Voltage Battery is diagnosed as source of concern, contact Ford Technical Hotline for Prior Approval.
- Technical Hotline determines if the High Voltage Battery can be repaired.

Focus Electric – High Voltage Battery Pack Repair Process

- Order a High Voltage Upper and/or Lower Battery shipping crate as directed by Hotline.
 - High Voltage Upper Battery crate part number – CM5Z-19G424-A
 - High Voltage Lower Battery crate part number – CM5Z-19G424-B
(Crate[s] will be direct-shipped from battery supplier and arrive in 1-3 business days.)
- Both upper and lower high voltage batteries must be removed from vehicle and shipped unless directed otherwise by Technical Hotline.



Upper Battery Crate – CM5Z-19G424-A



Lower Battery Crate – CM5Z-19G424-B

(Each crate includes a Hazard Class 9 label and 2 mounting bolts.)

Focus Electric – High Voltage Battery Pack Repair Process

- Remove the High Voltage Upper Battery. Refer to Workshop Manual (WSM), Section 414-03.
- Place the upper battery crate as shown in the illustrations. (Figure 1)
- The High Voltage Upper Battery crate is symmetrical. The battery can be placed in the crate in either orientation.



Figure 1

Focus Electric – High Voltage Battery Pack Repair Process

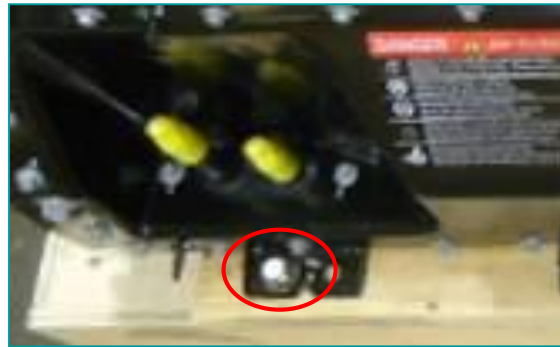
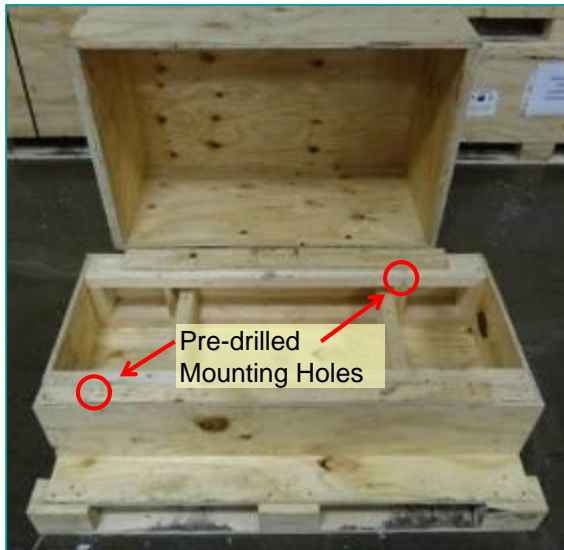


Figure 2

- There are pre-drilled mounting holes in the left front & right rear corners. Secure the High Voltage Upper Battery to the crate using the bolts provided.
- Cap coolant lines (2 upper and 2 lower).
- Reinstall crate cover on base.
- Secure the cover using plastic banding, if available. If not, the weight of the cover is sufficient to hold it in place during shipping.

Focus Electric – High Voltage Battery Pack Repair Process

- Remove the High Voltage Lower Battery. Refer to WSM, Section 414-03.
- Place the lower battery crate as shown. (Figure 2)



Figure 2

- There are pre-drilled mounting holes on the wood blocks at the front of the crate. Secure the High Voltage Lower Battery to the crate using the bolts provided.
- Reinstall crate cover on base.
- Secure the cover using plastic banding, if available. If not, the weight of the cover is sufficient to hold it in place during shipping.

Shipping Information (USA only)

- Apply the Hazard Class 9 label (included in crate) as shown below.
 - Call Schneider Logistics **1-800-222-8403 Ext 8485892** - Provide the following:
 - ❑ Ship Date
 - ❑ Ready Time
 - ❑ Close Time
 - ❑ Origin shipping code (Dealer Address)
 - ❑ Destination shipping code: **PADUM** or Location ID: **0000721823**
 - ❑ Total Piece Count = **2**
 - ❑ Total Weight = **900 LBS**
 - ❑ Stack-ability (Yes or **No**)
 - ❑ Hazmat details – **Class 9 – Lithium Ion**
- Piston Automotive**
12723 Telegraph Rd.
Redford, MI. 48239-1487
- ❑ Identify **Conway** as the carrier (*This should be known by Schneider Logistics*)
 - ❑ Provide the driver a Bill of Lading. (Either the dealership's standard form, or the form provided in attachment "A".)
 - ❑ **NOTE: The Bill of Lading must state –**
Third Party Bill To: Ford Customer Service Division
C/O SYNCADA, PO Box 3001, Naperville IL 60566-7001



Shipping Information (Canada only)

- Apply the Hazard Class 9 label (included in crate) as shown below.
- Call Schneider Logistics **1-800-222-8403 Ext 8485892** - Provide the following:
 - ❑ Ship Date
 - ❑ Ready Time
 - ❑ Close Time
 - ❑ Origin shipping code (Dealer Address)
 - ❑ Destination shipping code: **PADUM** or Location ID: **0000721823**
- ❑ Total Piece Count = **2**
- ❑ Total Weight = **900 LBS**
- ❑ Stack-ability (Yes or **No**)
- ❑ Hazmat details – **Class 9 – Lithium Ion**
- ❑ Specify **TST Overland** as the carrier (This should be known by Schneider Logistics)
- ❑ All 3 Attachments must be printed for TST Overland to satisfy Customs.
 - ❑ • On attachment 1, fill in the Date and Dealership name & address.
 - ❑ • On attachment 2, fill in the Dealership info under “Shipper.”
- ❑ **NOTE: The Bill of Lading must state –**
Third Party Bill To: Ford Customer Service Division
C/O SYNCADA, PO Box 3001, Naperville IL 60566-7001

Piston Automotive
12723 Telegraph Rd.
Redford, MI. 48239-1487



Focus Electric – High Voltage Battery Pack Repair Process

- Shipping takes 2-5 days, each way. (Typically, 4-5 days from California.)
- Repair at Piston Automotive usually takes 1-3 days. Four days is the maximum time allowed.
- Shipping crate(s) may be scrapped when repair is complete.

Warranty Claiming Instructions:

Use CAUSAL part “10B759” for the claim.

Parts: Claim the upper and lower crates used to ship the battery (as appropriate), along with any other associated parts required for the repair.

Labor: Claim 12651D/12651D45 plus 12651D70LW (lower), or 12651D70UP (upper), or 12651D70T (both), as appropriate.

Handling: Only if a new a new battery was installed, a \$600 MISC Expense of “HANDLG” may also be claimed.

Third Party Billing To:
 Ford Customer Service Division
 C/O SYNCADA, PO Box 3001, Naperville
 IL 60566-7001
 Schneider Logistics, Inc.# _____

BILL OF LADING

SHIP TO:

Piston Automotive
 12723 Telegraph Rd.
 Redford, MI. 48239-1487

DATE: _____

*****HAZARDOUS MATERIALS*****

# & Type of Package	Total by mass or volume	HM	Basic Description & ERG# (UN #, proper shipping name, hazard class, packing group per 172.101, 172.202, 172.200)	EX# if applicable
2 Crates	950 lbs	X	UN3480, Lithium Ion Battery, 9, II, ERG# 147	
Additional Information				
24 hr.EMERGENCY CONTACT: INFOTRAC 800-535-5053				

*****HAZARDOUS MATERIALS*****

PLACARDS PROVIDED BY: _____

ERG GUIDEBOOK PROVIDED BY: SHIPPER X CARRIER _____

MSDS PROVIDED BY: SHIPPER X CARRIER _____

SHIP FROM: _____

RECEIVED BY: _____

SHIPPERS CERTIFICATE: THIS IS TO CERTIFY THAT THE ABOVE NAMED MATERIALS ARE PROPERLY CLASSIFIED DESCRIBED, PACKAGED, MARKED AND LABELLED AND ARE IN PROPER CONDITION FOR TRANSPORTATION ACCORDING TO THE APPLICABLE REGULATIONS OF THE DEPARTMENT OF TRANSPORTATION:

SIGNATURE: _____

TITLE: _____

Commercial Invoice

Shipper		Shipment Information			
Name		Name Number of Pieces	2		
Address		Value of Goods	\$ 1,200.00		
City, Province/State		Funds Type	__ CAN	<input checked="" type="checkbox"/> USA	
Postal Code/Zip					
Consignee					
Name	PISTON AUTOMOTIVE				
Address	12723 TELEGRAPH RD				
City, P Province/State	REDFORD, MI				
Postal Code/Zip	48239				
Attention	SOBHI HUSSEIN				
Telephone Number	313-541-6779				
Complete Description of Goods and Packaging					
USED AUTO PART - PN: CM58-10B759-G, CM58-10B759-H					
USED BATTERY UN3480, LITHIUM ION BATTERY, 9, PG II, ERG#147					
<p>FORD MOTOR COMPANY IS THE EXPORTER OF RECORD AND WILL BE RESPONSIBLE FOR ALL DUTIES AND BROKERAGE FEES. FOR ALL DUTIES AND BROKERAGE FEES.</p> <p style="text-align: right;">ELECTRONIC SIGNATURE: </p>					
For assistance with this form, please contact our Customer Service Call Center at 1-888-878-9229.					

POTENTIAL HAZARDS**FIRE OR EXPLOSION**

- Lithium ion batteries contain flammable liquid electrolyte that may vent, ignite and produce sparks when subjected to high temperatures (> 150 °C (302 °F)), when damaged or abused (e.g., mechanical damage or electrical overcharging).
- May burn rapidly with flare-burning effect.
- May ignite other batteries in close proximity.

HEALTH

- Contact with battery electrolyte may be irritating to skin, eyes and mucous membranes.
- Fire will produce irritating, corrosive and/or toxic gases.
- Burning batteries may produce toxic hydrogen fluoride gas (see GUIDE 125).
- Fumes may cause dizziness or suffocation.

PUBLIC SAFETY

- **CALL Emergency Response Telephone Number on Shipping Paper first. If Shipping Paper not available or no answer, refer to appropriate telephone number listed on the inside back cover.**
- As an immediate precautionary measure, isolate spill or leak area for at least 25 meters (75 feet) in all directions.
- Keep unauthorized personnel away.
- Stay upwind.
- Keep out of low areas.
- Ventilate closed spaces before entering.

PROTECTIVE CLOTHING

- Wear positive pressure self-contained breathing apparatus (SCBA).
- Structural firefighters' protective clothing will only provide limited protection.

EVACUATION**Large Spill**

- Consider initial downwind evacuation for at least 100 meters (330 feet).

Fire

- If rail car or trailer is involved in a fire, ISOLATE for 500 meters (1/3 mile) in all directions; also initiate evacuation including emergency responders for 500 meters (1/3 mile) in all directions.

EMERGENCY RESPONSE**FIRE****Small Fire**

- Dry chemical, CO₂, water spray or regular foam.

Large Fire

- Water spray, fog or regular foam.
- Move containers from fire area if you can do it without risk.

SPILL OR LEAK

- ELIMINATE all ignition sources (no smoking, flares, sparks or flames in immediate area).
- Do not touch or walk through spilled material.
- Absorb with earth, sand or other non-combustible material.
- Leaking batteries and contaminated absorbent material should be placed in metal containers.

FIRST AID

- Move victim to fresh air.
- Call 911 or emergency medical service.
- Give artificial respiration if victim is not breathing.
- Administer oxygen if breathing is difficult.
- Remove and isolate contaminated clothing and shoes.
- In case of contact with substance, immediately flush skin or eyes with running water for at least 20 minutes.
- Ensure that medical personnel are aware of the material(s) involved and take precautions to protect themselves.