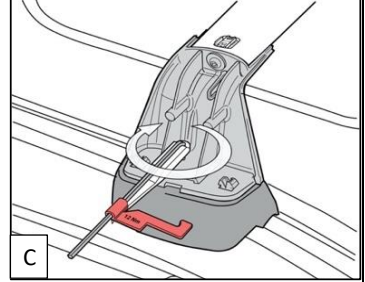
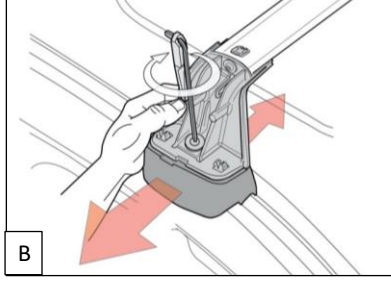
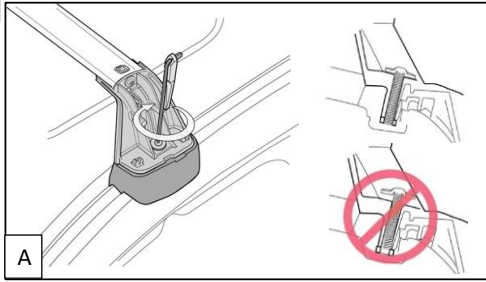
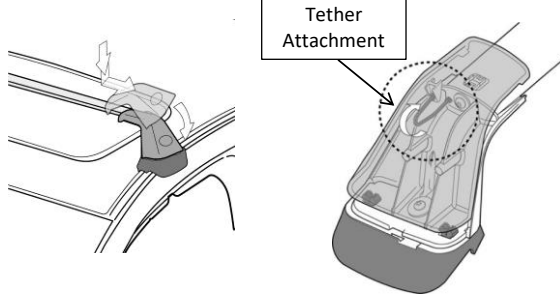
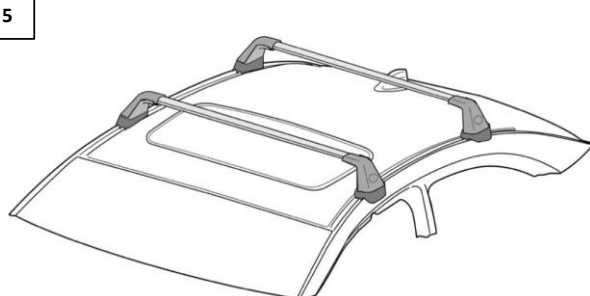


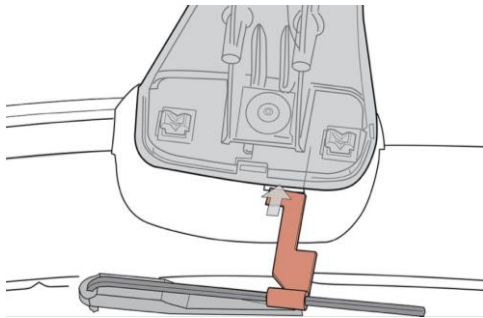
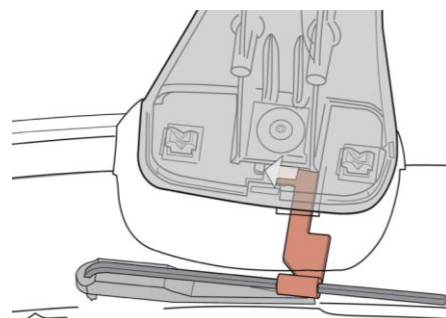
INSTALLATION INSTRUCTIONS
DESCRIPTION: 2022 WRX Cross Bar
3


- A. Using the supplied Torque Wrench, tighten the bolt until the washer loosely contacts the stanchion. Do not fully torque yet.
 B. Move to opposite side of the vehicle and visually align stanchion and bracket holes. Hold the stanchion in place and tighten the bolt using the Torque Wrench, tighten the bolt until the washer loosely contacts the stanchion.
 C. Using Torque Wrench, tighten both bolts to 12Nm. Repeat steps (A-C) on remaining crossbar.

NOTE: Retorque the bolts after every 1500 miles of continuous use.

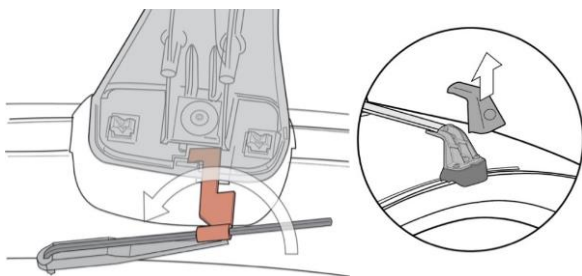
4

5


Attach the tethers from stanchion to cover. Lower the end cap covers onto the crossbar and slide outward to engage the tangs. Rotate downwards to fully snap cover into position.

REMOVING CROSS BARS
6

7


Using the supplied torque wrench, insert the red tab into the slot as shown. Slide tool in until it makes contact with the L on the casting

Slide tool sideways to get the "hook" behind the cover's tab.

8


Rotate the tool using the Allen wrench as a handle to push the back of the tool against the L and the "hook" against the cover tab until the tab pops loose.