



**SUBARU**

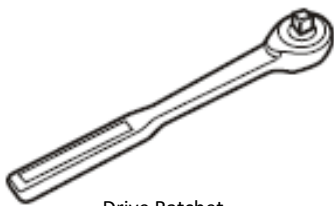
**PART NUMBER: PT942-42232**

**INSTALLATION INSTRUCTIONS**

**DESCRIPTION: Solterra Illuminated Door Sill**



**TOOLS REQUIRED:**



Drive Ratchet



10mm Socket

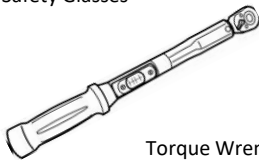


Side Cutters

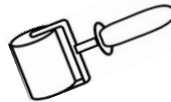


Pry Tool

Safety Glasses



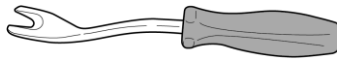
Torque Wrench



Rubber Roller



Lint Free



Trim Panel Removal



Alcohol & Water

**KIT CONTENTS:**


Driver Side Door Sill



Passenger Side Door Sill



10 Wire Ties


 2 Pinch Weld  
Bridge Clips

**STEP 1: Prepare for the Installation.**

- (a) Inspect all kit components and check for damage or missing parts.
- (b) Remove the negative battery terminal.

**CAUTION: Do not touch the positive terminal with any part of the tool when removing the cable.**

**STEP 2: Disassemble the Vehicle.**

- (a) If any door sill covers are present, use a standard process for removing double sided taped-on parts/badges.

**NOTE: Unless otherwise specified, the procedure for the driver side and passenger side is the same.**

- (b) Disengage the two claws on the inside bottom and the four clips to remove the front left and front right inner door scuff plates.





(c) Remove the front left and front right cowl side covers.

(1) Remove nut holding on cowl side cover using either a Phillips screwdriver or by hand.



(2) Pull the cover straight away from the body to detach one clip in the direction of the arrows. Use a nylon pry tool if a clip is stuck to the body after removal, remove the clip and reattach it to the cowl cover.



(d) Detach the front left and front right weather seal from the bottom pinch weld

**STEP 3: Install Preparation**

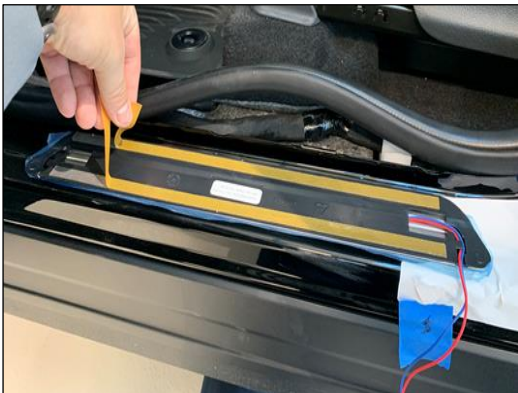
(a) Cut out installation template and tape to the vehicle using the alignment features as shown.



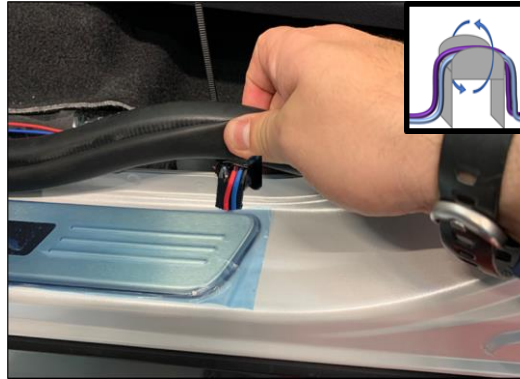
**4. Installation of Driver Side Illuminated Door Sill**  
(a) Clean the door rocker area with alcohol and water.  
**NOTE: The work area, door sills and vehicle door surface temperature must be at least 60°F (16°C).**

(b) Remove the protective tape from the adhesive backing on the door sill (Fig. 4-1).

(c) Carefully align the rear end of the door sill with the fixture. Ensure the door sill is parallel with the pinch weld and tape it down.



- (d). Press the door sill onto the rocker and apply pressure evenly to ensure it attaches firmly.
- (e) Place one pinch weld bridge on the pinch weld in the area where the cable exits the door sill. (Fig. 4-3)
- (1). Secure the door sill cable to the pinch weld bridge by looping electrical tape (Fig. 4-3)
- NOTE: Tape the pinch weld bridge to the wire such that excess wire is not present between sill and pinch weld clip.**
- (2) Thread the door sill harness under the weather seal and reinstall the weather seal over the pinch weld bridge.
- NOTE: Make sure the bridge ends under the soft part of the weather strip.**



- (f) Route the sill harness along the vehicle harness and secure with 4 cable ties as shown. Use a cutting tool to remove the excess length of the cable ties.



- (g) Disconnect the blue vehicle harness branch connector from the blue female connector in the LH side kick panel.

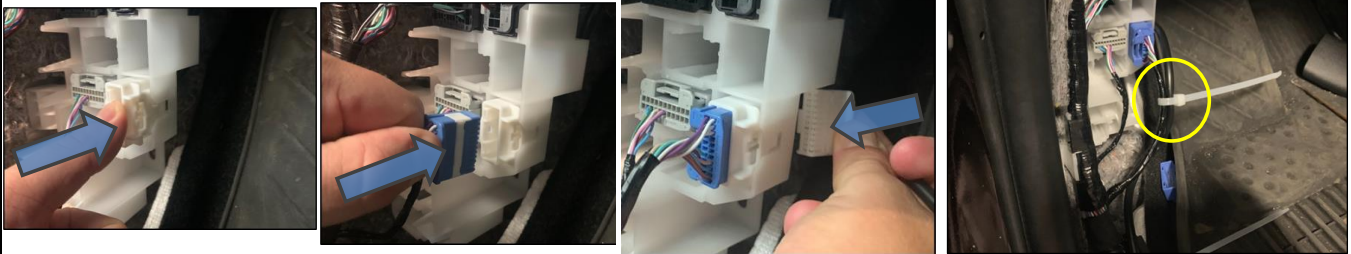


- (h) Using a flat head screwdriver, lift up on tab of female connector and remove from the white housing.



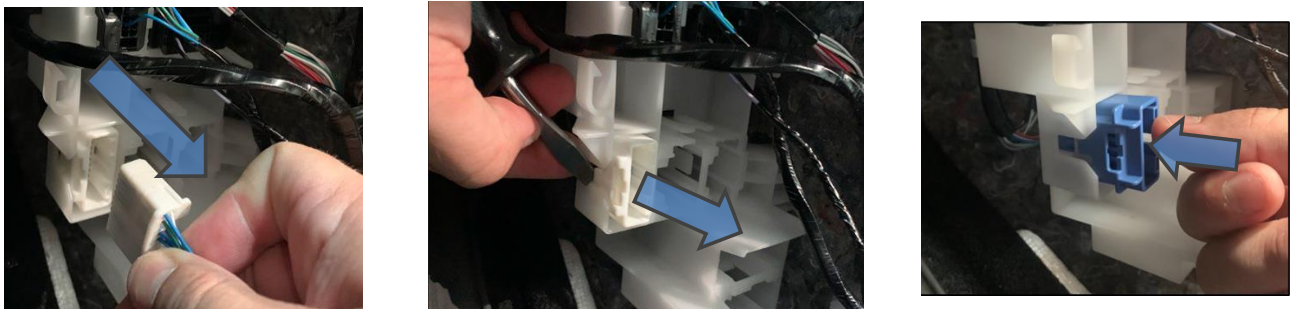


- (i) Reinstall the white bridge connector from the hardware kit into the slot in the white housing and clip into place.
- NOTE: The vehicle harness connector and mating bridge connector colors do not match! The white bridge connector goes on the LH side and blue bridge connector goes on RH side of the vehicle.**
- (j) Plug blue vehicle harness connector back into front port of the white bridge connector.
- (k) Plug illuminated door sill harness into back port of bridge connector.
- (l) Secure the illuminated door sill harness to the vehicle harness branch with a 5th cable tie. Trim excess length of the cable ties with a cutting tool.
- (m) Clip kick panel back into place and reinstall the plastic nut with either a Phillips screwdriver or hand tightening.
- (n) Reinstall the vehicle scuff plate by applying pressure to engage the clips.

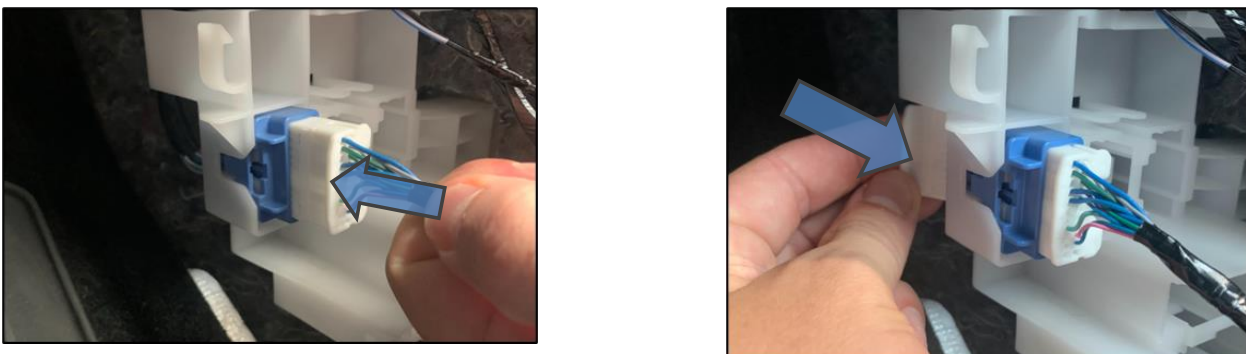


**5. Install the Passenger Side Door Sill.**

- (a) Repeat Step 2(a) through Step 4(b) on the passenger side.
- (b) Disconnect the white vehicle harness branch connector from the white female connector in the LH side kick panel.
- (c) Using a flat head screwdriver, lift up on tab of female connector and remove from the white housing.
- (d) Reinstall the blue bridge connector from the hardware kit into the lower left slot in the white housing and clip into place.
- NOTE: The vehicle harness connector and mating bridge connector colors do not match! The white bridge connector goes on the LH side and blue bridge connector goes on RH side of the vehicle.**



- (e) Plug white vehicle harness connector back into front port of bridge connector.
- (f) Plug illuminated door sill harness into back port of bridge connector.
- (g) Repeat steps 4(l) and 4(m) to reinstall vehicle components.





**STEP 6: Test the Door Sills.**

- (a) Temporarily reconnect the negative battery terminal.
- (b) Press in the front door courtesy switches to check the function of the front door scuff plates.
  - (1) The door sill light should be on with the door(s) open.
  - (2) The door sill light should turn off after 15 seconds when all of the door courtesy switches are pressed in.



**STEP 7: Reassemble the Vehicle.**

- (a) Reassemble the vehicle by reversing Step 2(a) through Step 2(h).
- (b) Tighten the negative battery cable (Fig. 7-1).
  - (1) Position the negative battery cable at the original factory position.
  - (2) Tighten the nut to 5.4 N-m (48 lbf-in) of torque.  
**Torque: 5.4 N-m (48 lbf-in)**
  - (3) Do not touch the positive battery terminal with any tool when replacing the cable.

