



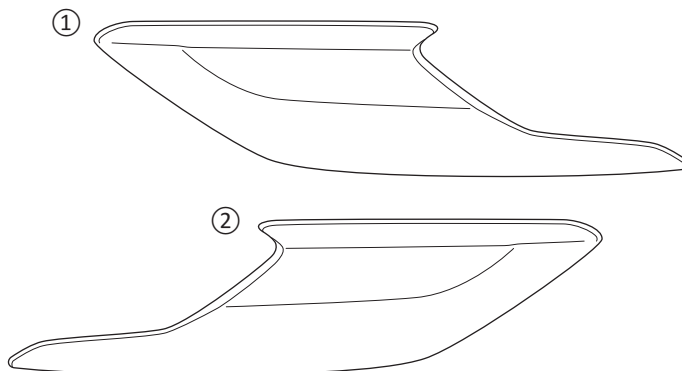
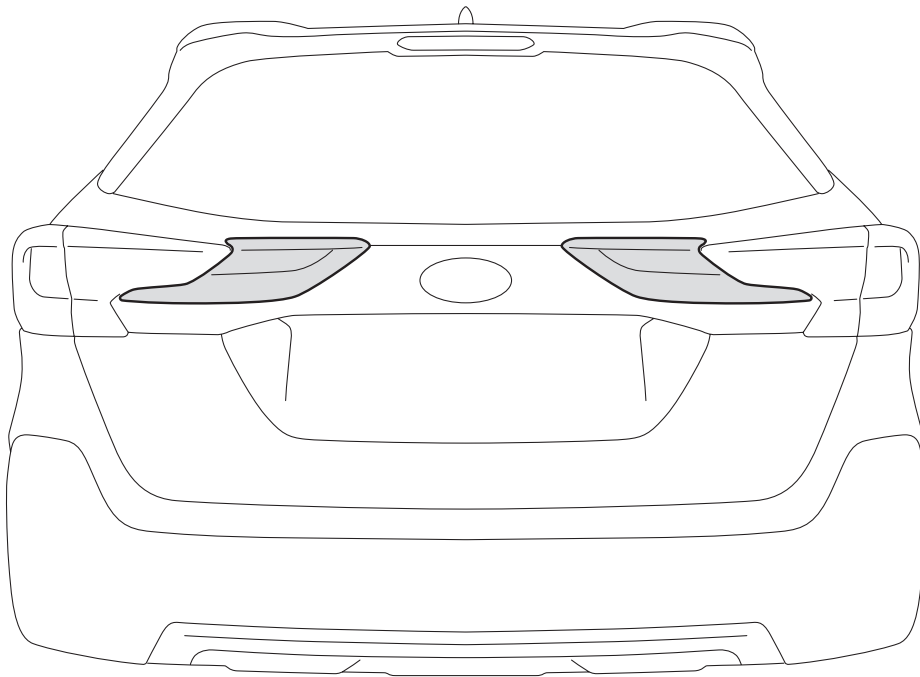
**SUBARU**

## 2-piece Rear Gate Trim - Chrome

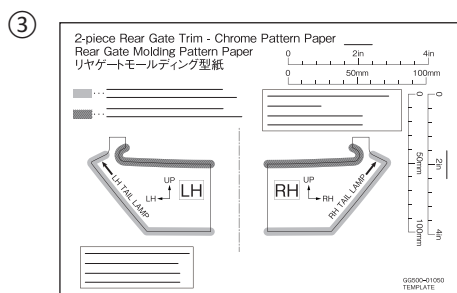
### Installation Manual

Genuine Part Number: J3110AN020

Applicable Model: OUTBACK



No.	Part Name
①	Rear Gate Trim RH (Right Hand)
②	Rear Gate Trim LH (Left Hand)
③	Pattern Paper



Service Parts:		
RH	J3110AN001	①, ③
LH	J3110AN002	②, ③

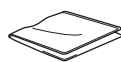
Masking Tape



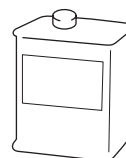
Protective Sheet



Cloth

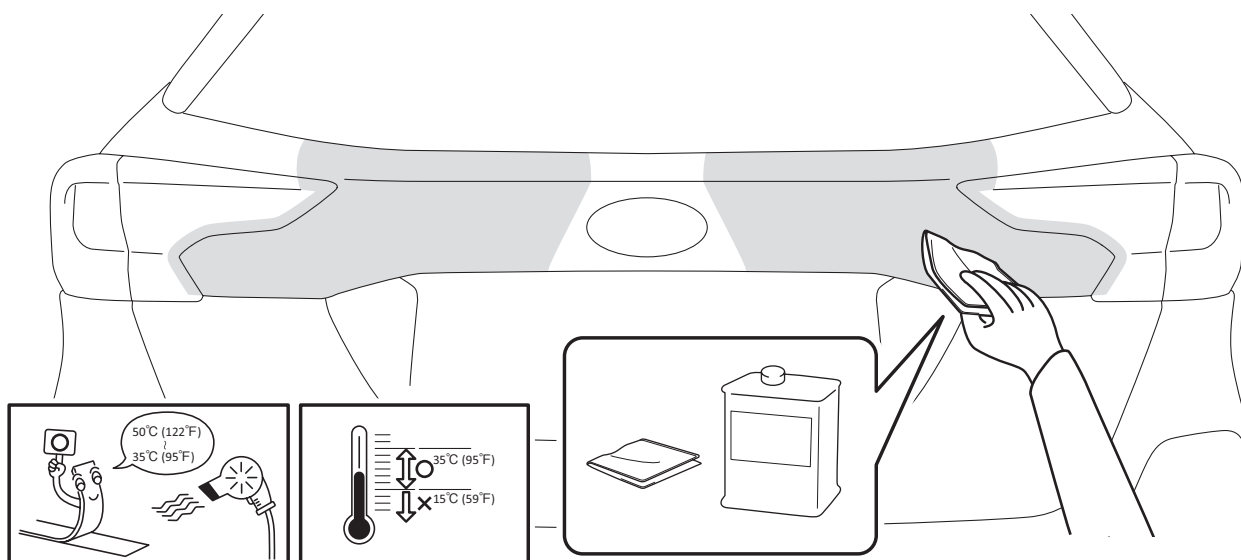


Rubbing Alcohol

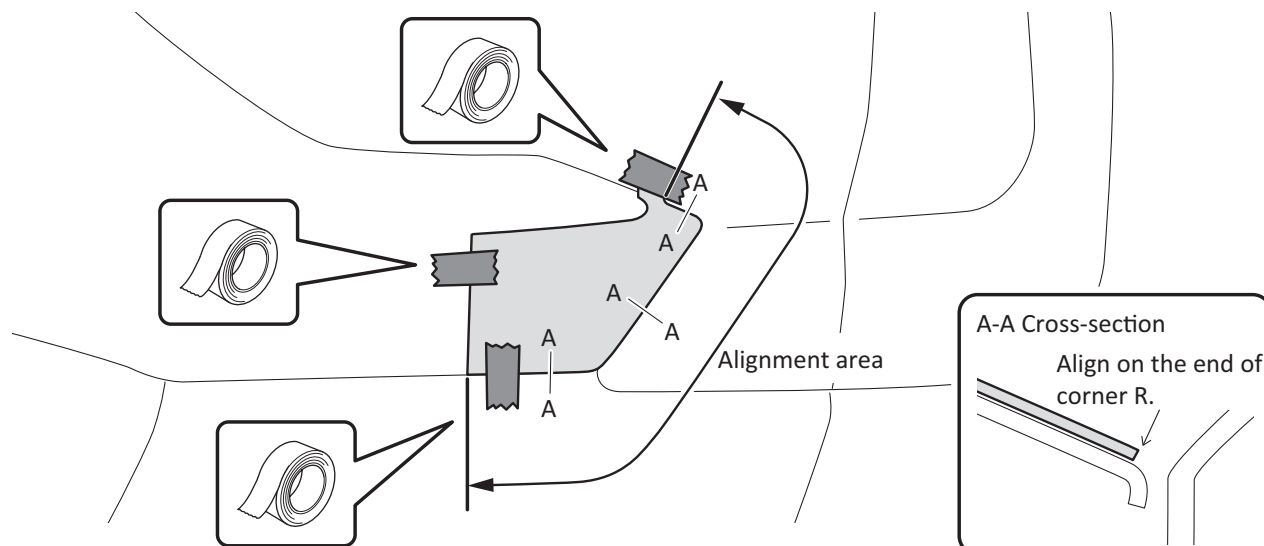


※ Install this product before applying Vehicle Wax.  
If the vehicle already has the Wax applied,  
please remove the Wax on mounting area before installing this product.

- 1 Clean the area shown in the figure using a clean cloth and rubbing alcohol.

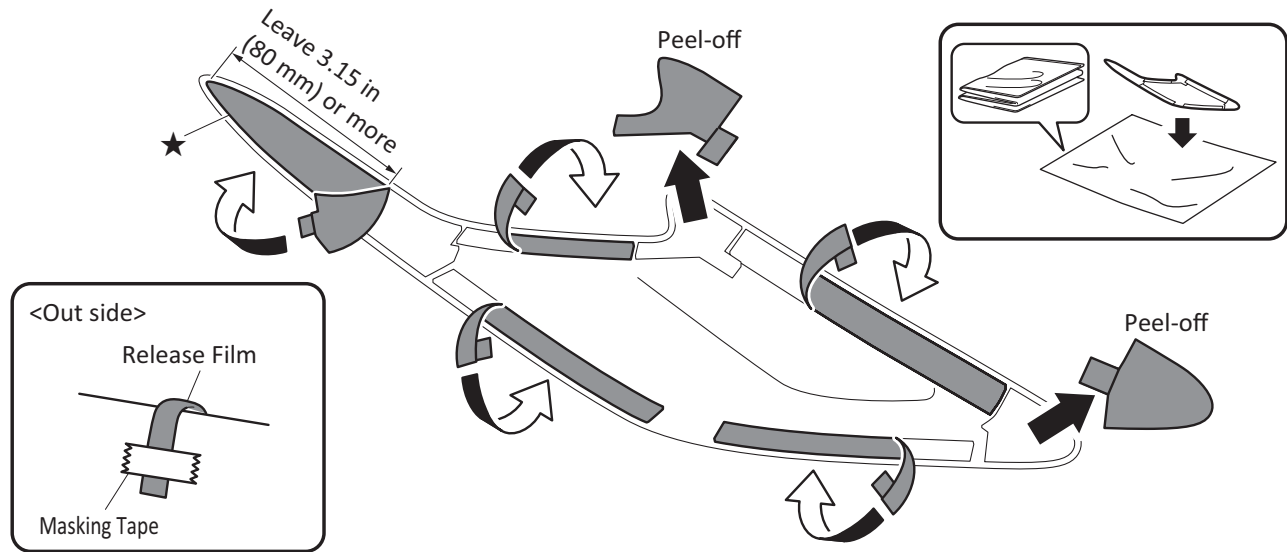


- 2 Align the Pattern Paper (RH) with the shape of the Rear Garnish and affix it with Masking Tape.



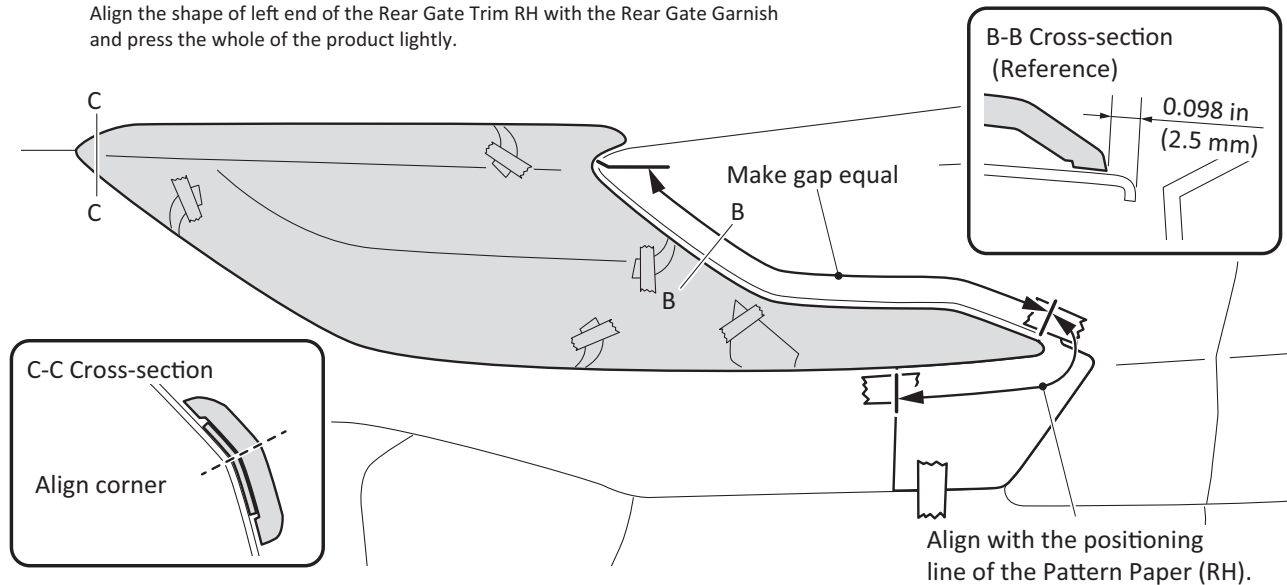
3

Peel 5 of the Release Films on the back side of the Rear Gate Trim RH about 2 in (50 mm) in the direction shown in the figure and affix to the out side with Masking Tape. Peel-off the remaining 2 Release Films. Leave at least 3.15 in (80 mm) of the Release Films as shown with a star mark (★).



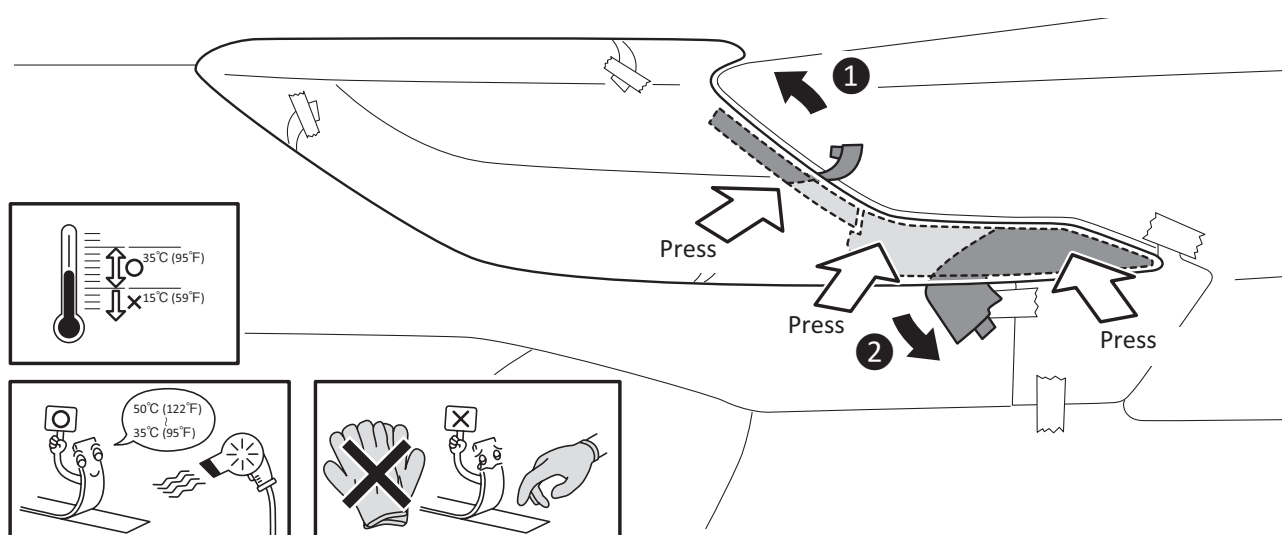
4

While making the gap between the right side of the Rear Gate Trim RH and the end of the Rear Gate Garnish equal, align the tip with the positioning line of the Pattern Paper (RH). Align the shape of left end of the Rear Gate Trim RH with the Rear Gate Garnish and press the whole of the product lightly.

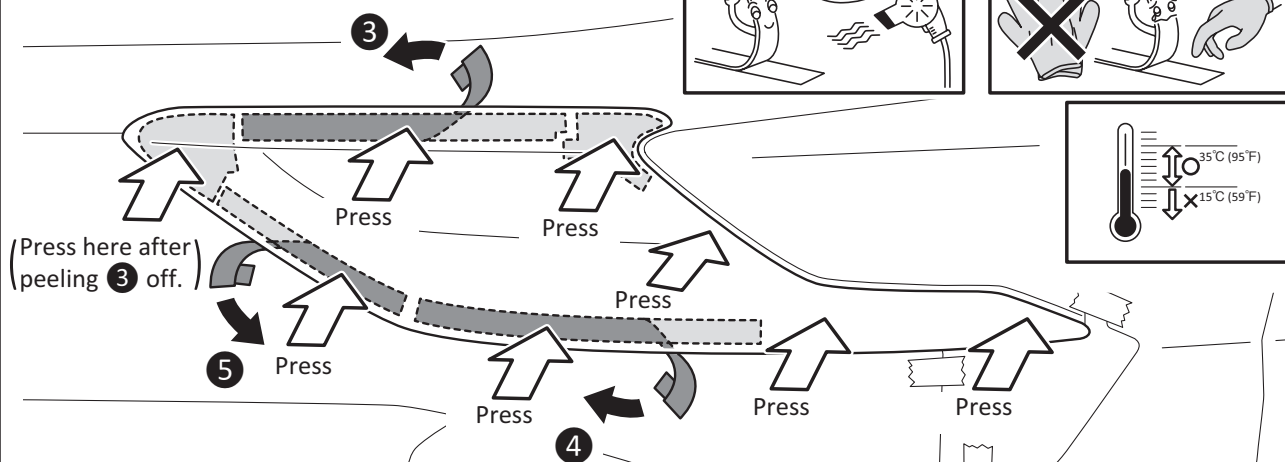


5

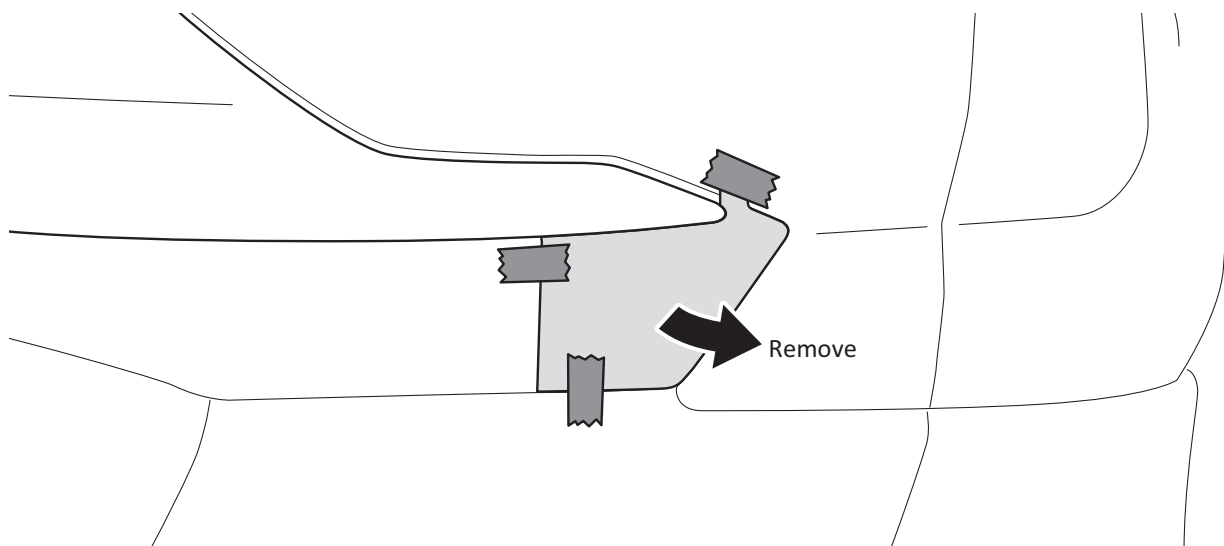
While keeping the position of the Rear Gate Trim RH, peel-off the Release Films in the order as shown in the figure, and Press the product. Be careful not to let the exposed tape touch the paper template.



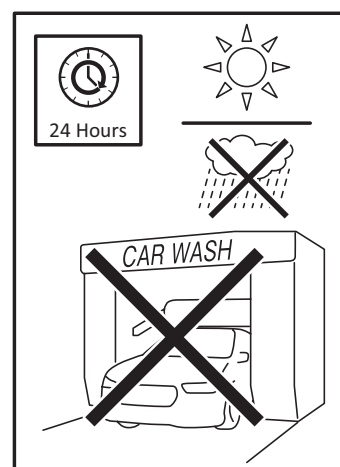
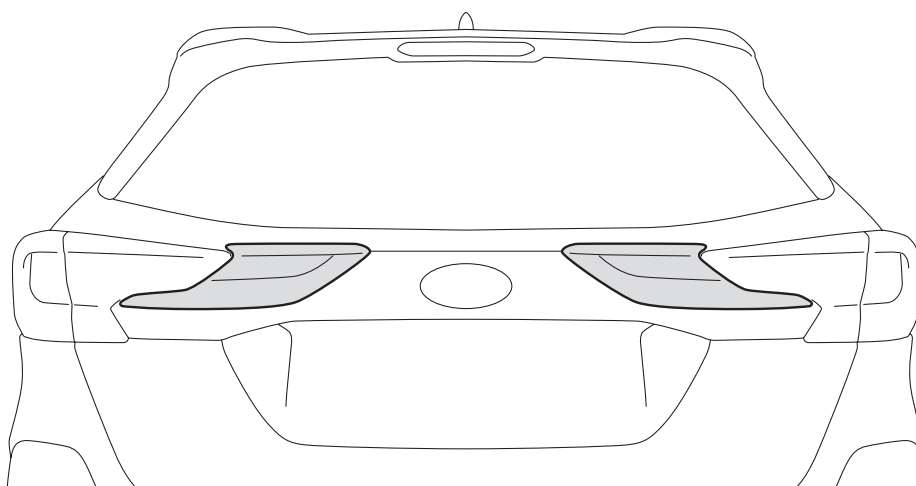
- 6 While keeping the position of the Rear Gate Trim RH, peel-off the Release Films in the order as shown in the figure, and Press the product.  
**And finally press the whole of the product with a pressure of 11 lbf (49 N) or greater.**  
**Be careful not to scratch the product when attaching it.**



- 7 Remove the Pattern Paper (RH).



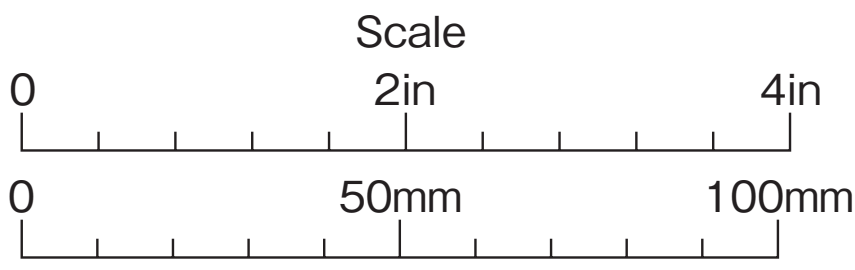
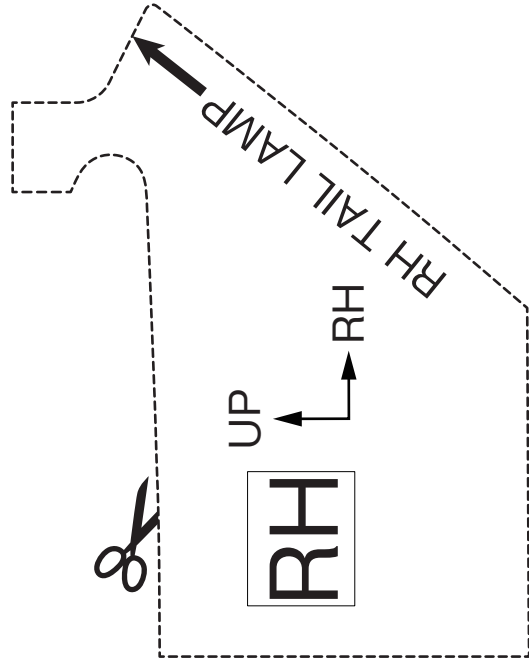
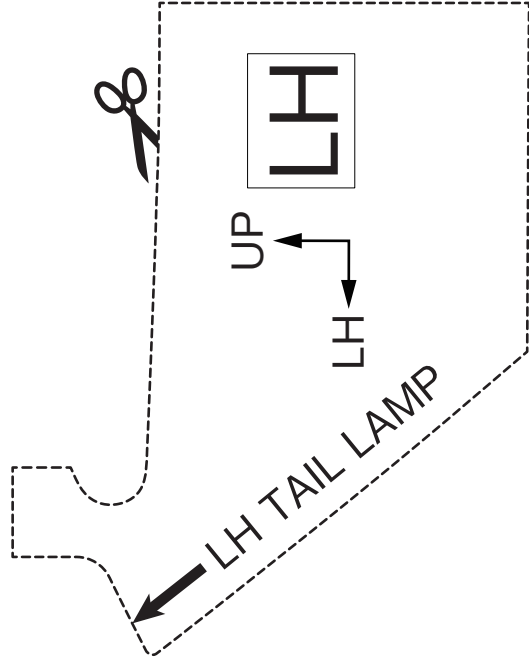
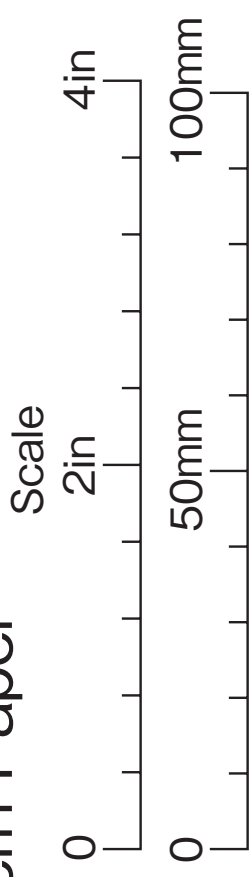
- 8 Install the Rear Gate Trim LH with the same procedure as RH.  
 Clean the vehicle. This now completes installation work.



# 2-piece Rear Gate Trim - Chrome Pattern Paper

## Rear Gate Molding Pattern Paper

### リヤゲートモールディング型紙



Use the Rear Gate Molding Pattern Paper that's provided in this kit.  
However, if a copy is needed, select "Actual Size" or set Scale to "100%" or select "Do Not Scale" in the Print Options before printing this page.  
After printing, use a ruler to confirm the printed scales match the ruler before using.

このキットに同梱されている型紙を使用してください。  
ただし、コピーが必要な場合は、このページを印刷する前に、[実寸]を選択するか、[拡大縮小]を[100%]に設定するか、[印刷オプション]で  
[拡大縮小しない]を選択してください。  
印刷後、定規を使用して、印刷する縮尺が定規と一致することを確認してから使用してください。