

2022MY WRX Exterior AD Approach Mirror Port Installation Instructions

PN: J201SVC000



Ensure the VIN matches the work order, the vehicle due date is in the lock period, and verify there are no “Holds” on the vehicle for any reason. Verify the vehicle calls for the accessory installation.



Note: The accessory Interior A/D Compass Mirror or Home Link Mirror installation is required for the exterior A/D Approach Mirrors to fully function as designed.

CAUTION: ACCESSORY INSTALLATIONS PERFORMED BY UNTRAINED PERSONS COULD RESULT IN SERIOUS INJURY TO THOSE PERSONS OR TO OTHERS.

Subaru Work Instructions are intended for use by professional accessory installers ONLY. They are written to provide step by step accessory installation instruction for a fast-paced production environment. Properly trained accessory installers have the equipment, tools, safety instructions and know-how to do the job correctly and safely. Included in this information are the use of “special” accessory installation fixtures and templates that are not available to the Retailers or general public. Please refer to the Retailer Installation Instructions found in Subaru Tech Info System (STIS).

SUBARU OF AMERICA, INC. IS “ISO 14001 COMPLIANT”

The international standard for excellence in Environmental Management Systems. Please recycle or dispose of automotive products in a manner that is friendly to our environment and in accordance with all local, state and federal laws and regulations.

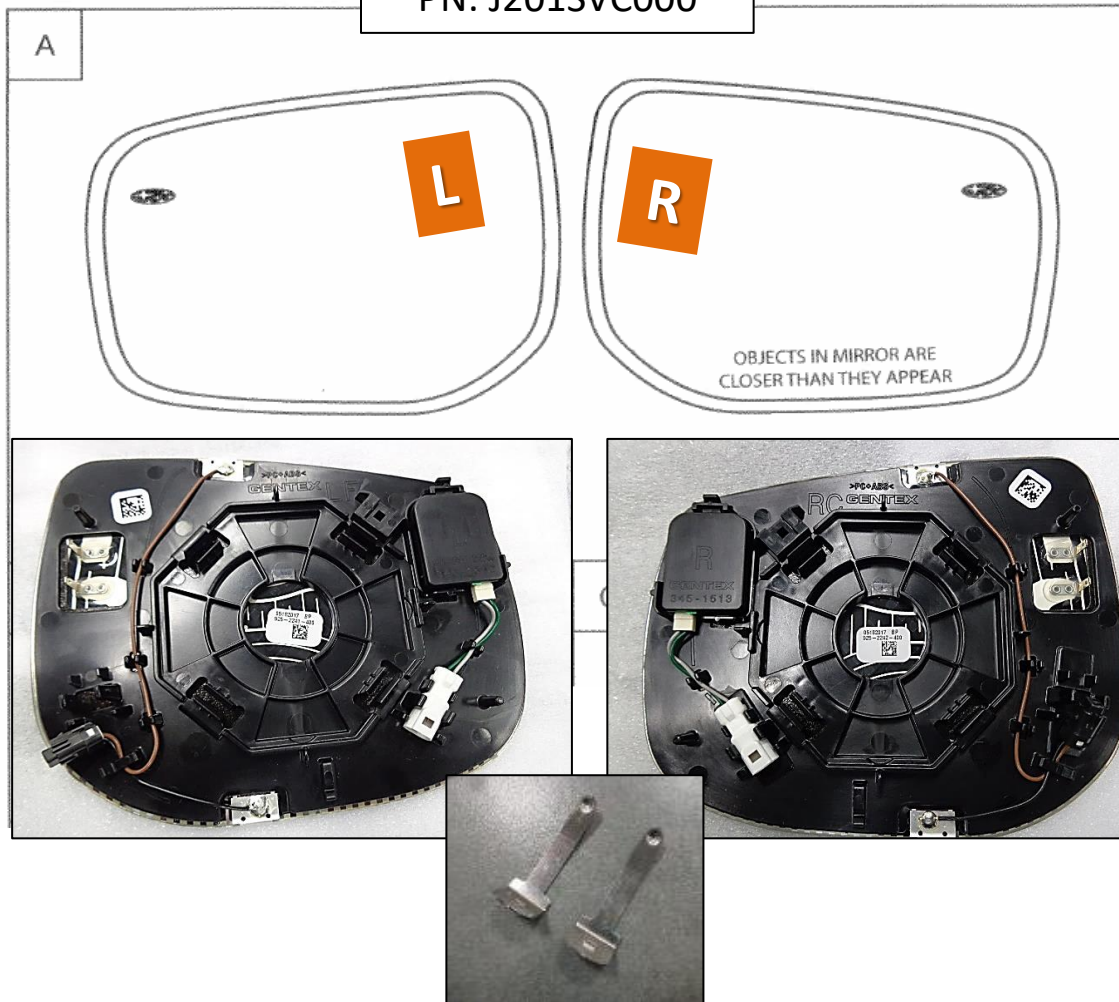


2022MY WRX Exterior AD Approach Mirror Port Installation Instructions

PN: J201SVC000

Inspect the Exterior A/D Approach Mirror Kit for defects, damage, or missing items.

- (1) LH Mirror
- (1) RH Mirror
- (2) Friction Dampers



STOP **Stop:** Damage may occur to the vehicle/part. Do not proceed until process has been complied with.



WHA **Work Hazard Analysis (WHA):** Operator safety-Use caution to avoid risk of injury.



Caution: A process that must be carefully observed in order to reduce the risk of damage to the accessory/vehicle and to ensure a quality installation.



Revision Mark/Highlight: This mark highlights a change in installation with respect to the previous issue.



WIT **Work Instruction Training (WIT):** Key point that designates an important step to ensure the quality of the installation.



Recycle: Item to be recycled.



S **Safety Torque -** This mark indicates that a torque is related to safety



2022MY WRX Exterior AD Approach Mirror Port Installation Instructions

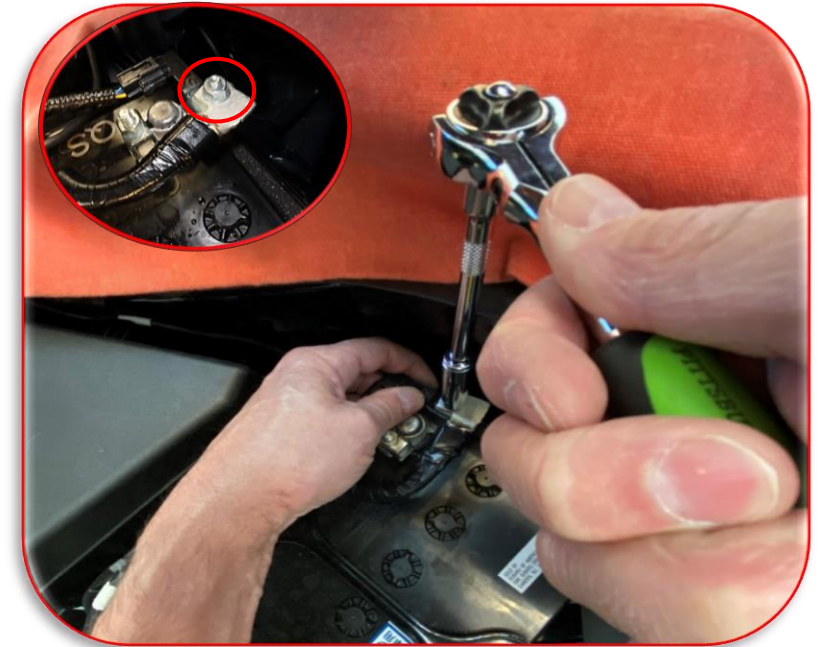
Required Tools and Supplies:

- ¼" Drive Ratchet w/ 6" extension
- 10mm socket
- ¼" Drive Torque Wrench (In. Lbs.)
- Clean Towels
- Window cleaner (optional)
- 99% Rubbing alcohol
- Paint marker
- Masking Tape
- Mirror Grease
- Flux brush
- Clean Towels
- Plastic Trim Tool
- Vehicle Painted Parts Protection



2022MY WRX Exterior AD Approach Mirror Port Installation Instructions

- 1) Open the hood and use the prop rod to hold the hood in the open position.
- 2) Place protection over the LS Fender
- 3) While holding the battery sensor in place with one hand, use a ¼" drive ratchet and 10mm socket to remove the negative battery cable from the negative battery stud. Do not remove negative cable from the battery post.
- 4) Position / protect the negative cable so it cannot accidentally touch body ground or the negative battery terminal and Allow (60) seconds before the next installation step to ensure the airbag power supply is discharged.



While disconnecting the negative battery cable from the stud, hold the battery sensor in place with one hand while loosening the 10mm hex nut that secures the cable to the sensor. This will help support the sensor to prevent damage and prevent the assembly from rotating on the battery post causing a poor connection. ⚠️

2022MY WRX Exterior AD Approach Mirror Port Installation Instructions

Prepare the Exterior Mirror Housings

Using masking tape, apply tape to the top and the bottom of the LH and RH mirror housing to prevent scratching or chipping the plastic housing surfaces.




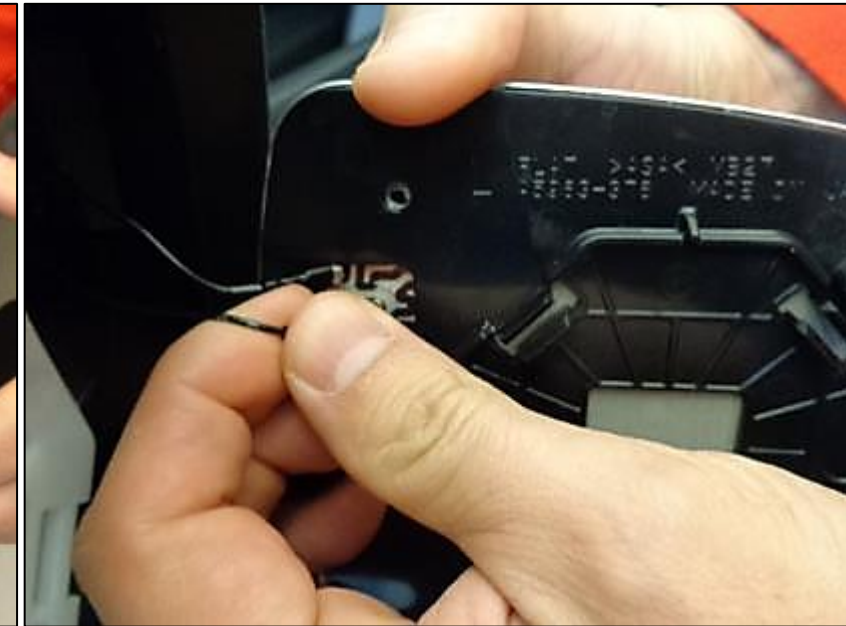
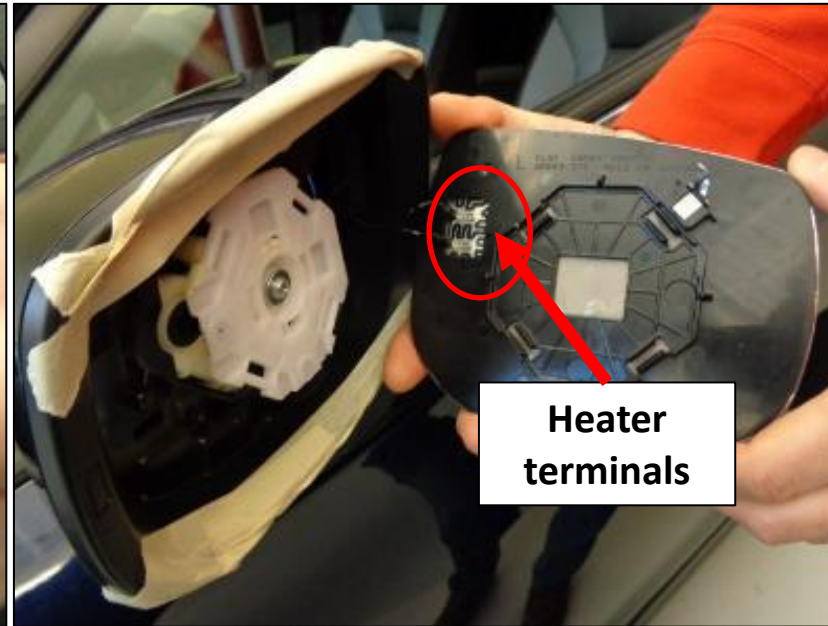
RH Mirror Shown

2022MY WRX Exterior AD Approach Mirror Port Installation Instructions

Remove OE Mirror Glass

LH Mirror Shown

Remove the OE exterior mirror glass assembly from the LH and RH mirror housing by firmly gripping the bottom of the mirror glass and pulling out with moderate force. If the mirror glass is heated carefully remove the heater circuit connectors from the glass assembly.  Dispose / recycle the exterior mirrors.

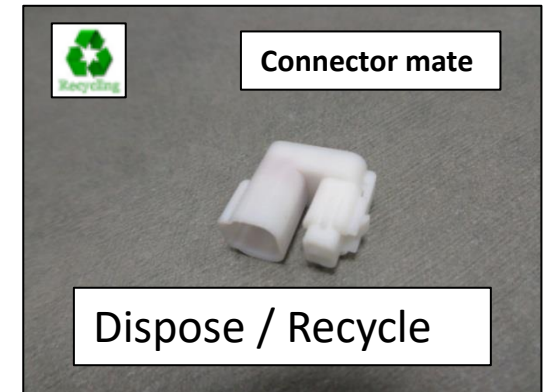
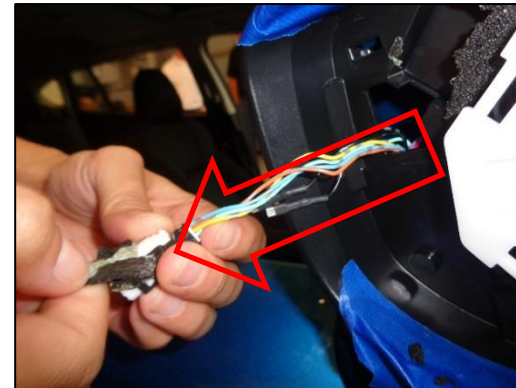
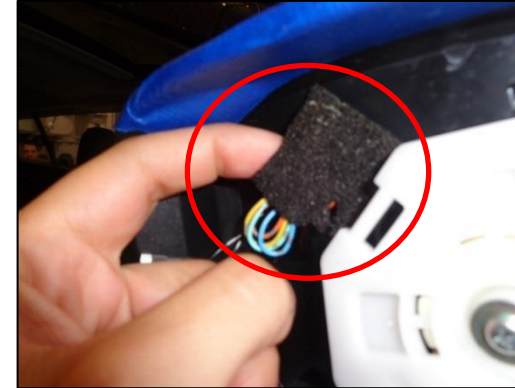


2022MY WRX Exterior AD Approach Mirror Port Installation Instructions

Locate Exterior Approach Wiring Harness

1. Locate and carefully pull the OE mirror harness connector, in order to expose the mirror connector. **DO NOT USE ANY TOOL OR INSTRUMENT TO EXPOSE THE MIRROR CONNECTOR.**
2. Clean away the excess foam still affixed to the mirror housing and the pre-arranged connector.
3. Carefully remove and dispose/recycle the white pre-arranged connector mate from the prearranged connectors.

RH Mirror Shown



Carefully pull out the OE mirror wiring harness. Do not pull the wires out of the connectors because permanent connector damage will result. Use no tools!

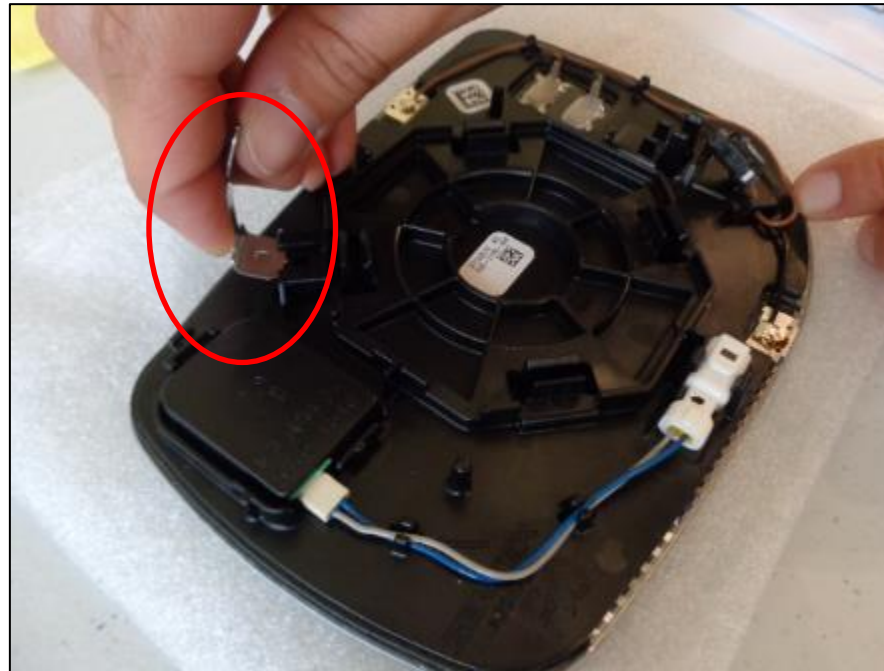


2022MY WRX Exterior AD Approach Mirror Port Installation Instructions

Exterior Approach Installation

1. Install the friction damper spring to the slot at the top of the A/D Approach Light mirror assembly for RH & LH mirrors
2. Apply mirror grease to the slot located in the RH & LH mirror housings. Clean off all surfaces of excess grease if accidentally applied to areas surrounding the target area. Do not get grease on the backing plate.

RH Mirror Shown

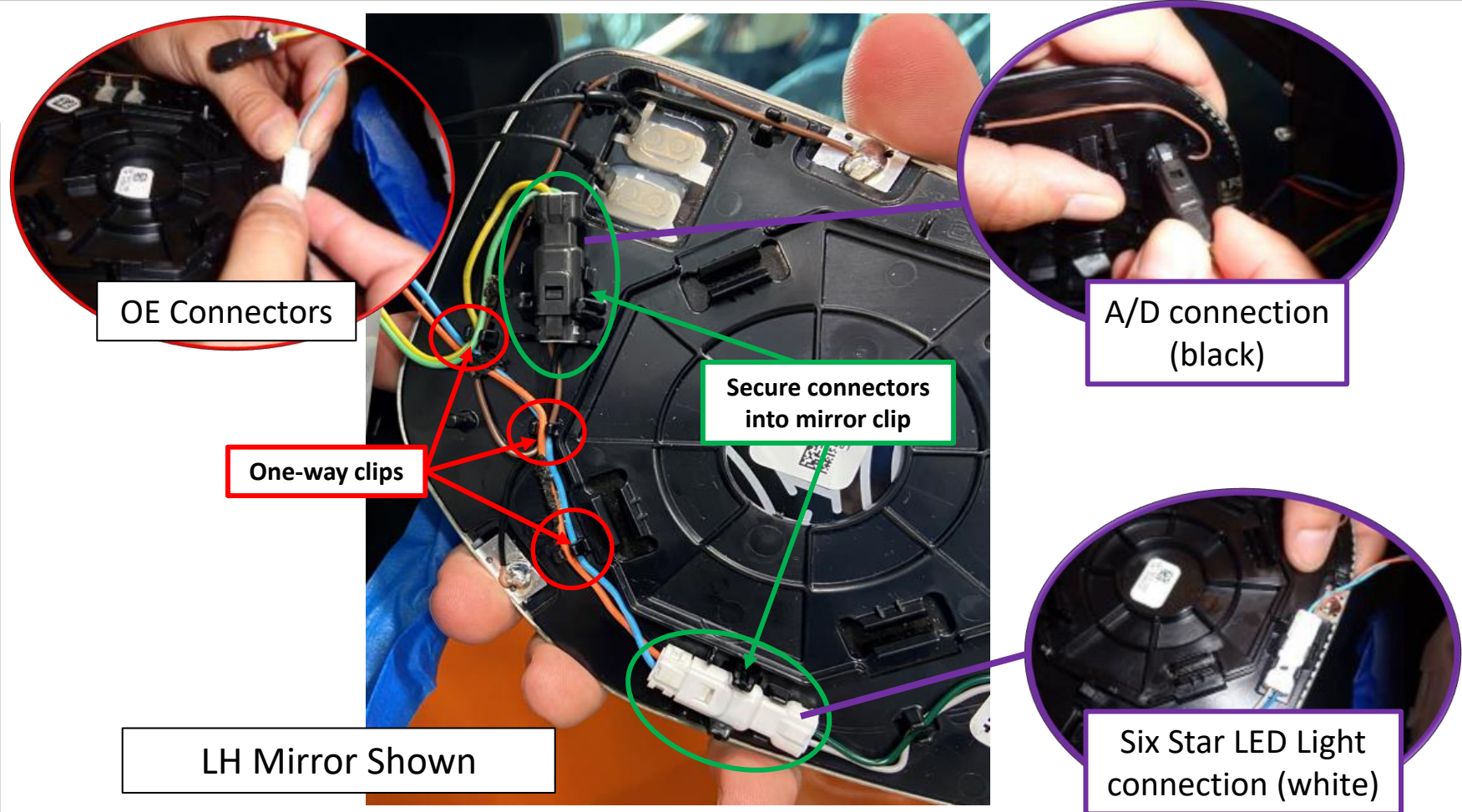


⚠ Wipe off all excess grease. Do not get grease on the backing plate.

2022MY WRX Exterior AD Approach Mirror Port Installation Instructions

Exterior Approach Installation

1. Connect the OE harness (white) 2-pin connector into the corresponding mirror (white) 2-pin harness connector.
2. Route the orange and blue wires through the (2) one-way clips.
3. Connect the OE harness (black) 2-pin connector into the corresponding mirror (black) 2-pin harness connector.
4. Route the yellow and green wires through the one-way clip.
5. Ensure both connectors are secured in place in their corresponding mirror clips.

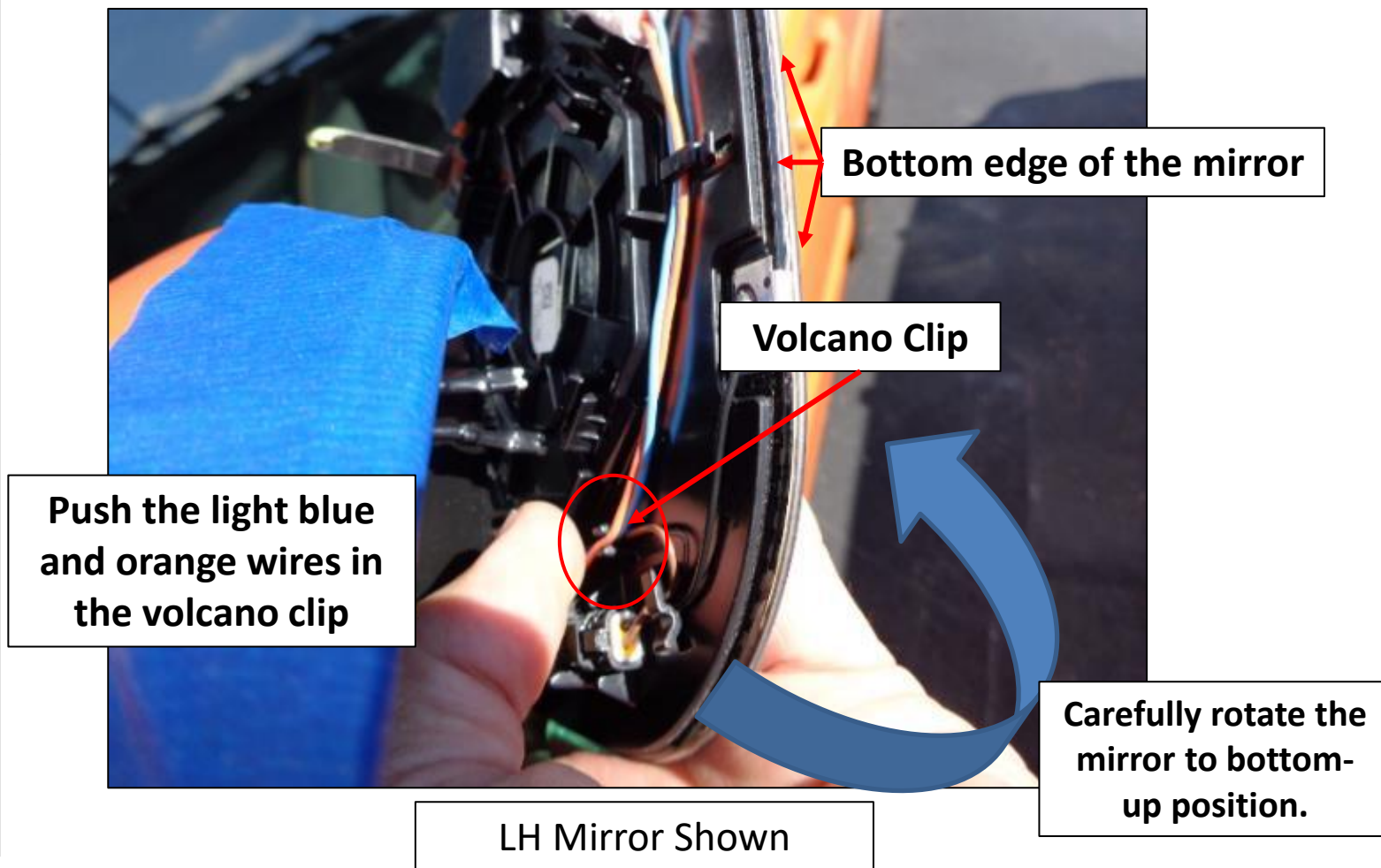


Confirm proper electrical connections with the push-pull method on both connectors.

2022MY WRX Exterior AD Approach Mirror Port Installation Instructions

Exterior Approach Installation Volcano Clip Best Practice

1. To ease the routing of the orange and light blue wires through the volcano clip, rotate the mirror bottom up so the harness wires have more length.
2. Use your fingers to seat the light blue and orange wires into the volcano clip.
3. Ensure both wires are securely in place in the volcano clip.
4. Rotate the mirror back in proper position to complete the installation.



Confirm proper electrical connections with the push-pull method.

2022MY WRX Exterior AD Approach Mirror Port Installation Instructions

Re-connect the OE heater circuit wires.

RH Mirror Shown

Re-connect the heater wires



Ensure the heater connectors are fully seated onto terminals.

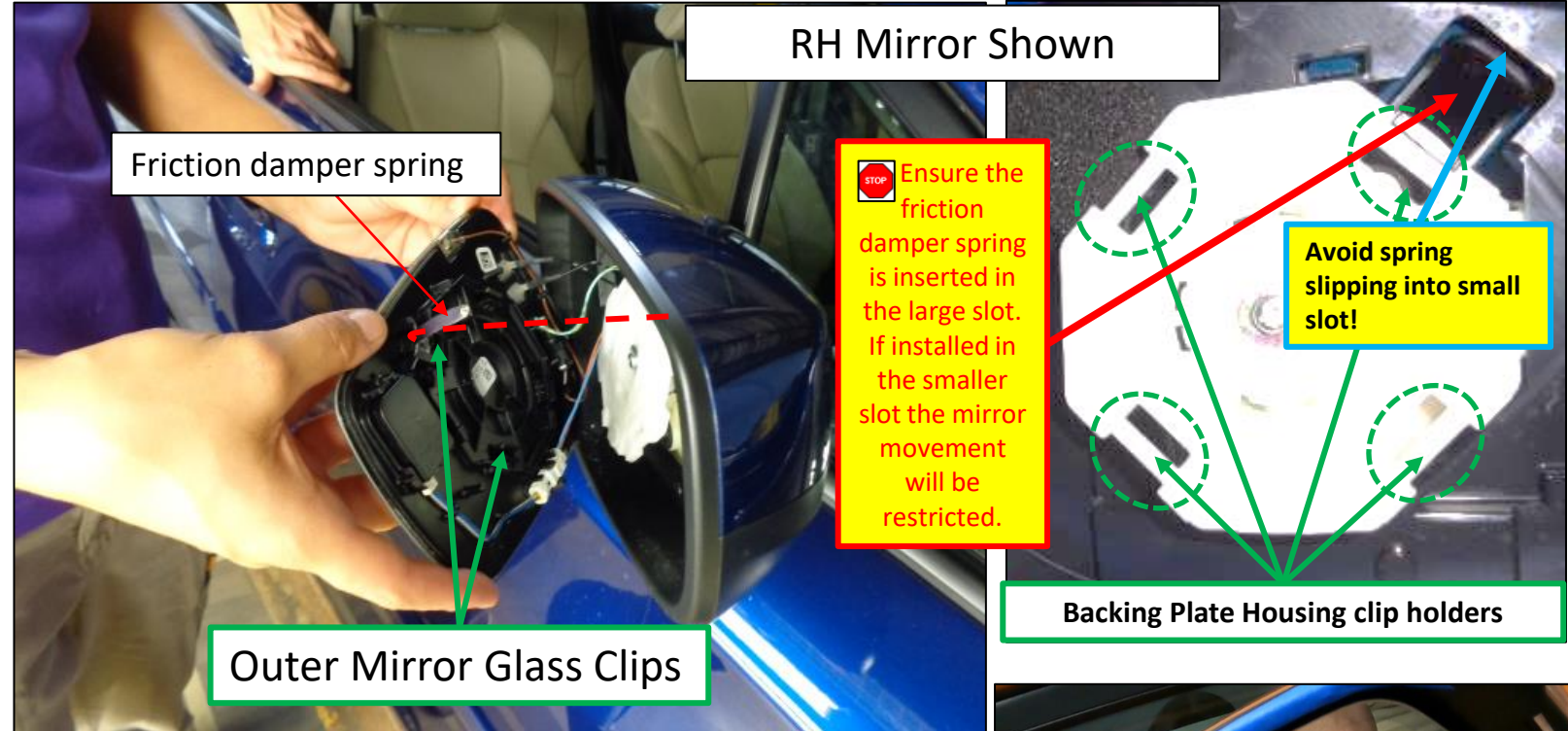
2022MY WRX Exterior AD Approach Mirror Port Installation Instructions

Exterior Approach Installation

1. Install the A/D Approach mirror by aligning the mirror clips with the exterior mirror Hexagonal (Stop Sign) white plastic backing plate housing. The A/D Approach mirror glass assembly has (4) clips that open to clip onto the (4) clip holders located on the Hexagonal (Stop Sign) white plastic housing.
2. Install the mirror carefully, ensuring the friction damper fits into the large slot, not the small slot above the large slot. Firmly press the mirror in place. You will feel all (4) clips engage.
(Ensure the exterior mirror wires are not twisted during the installation.)

➤ Repeat process on opposite side

TIP: Pressing from the center using the palm of your hand may help to install the mirror to the backing plate.



STOP Ensure the wiring is not pinched between mirror glass & backing plate or overlapping on the areas where the mirror glass is installed on the backing plate to prevent pinching wires and potential wiring damage. Ensure the friction damper spring is inserted in the large slot. If installed in the smaller slot the mirror movement will be restricted.

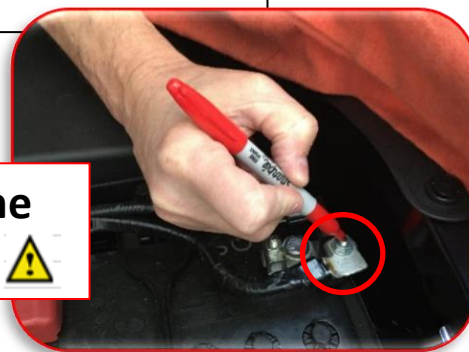


2022MY WRX Exterior AD Approach Mirror Port Installation Instructions

- 1) Re-connect the negative cable by reinstalling the saved 10mm nut on the stud. Use a ¼" drive torque wrench and a 10mm socket, tighten the cable nut to 66 In. Lbs. while holding the sensor to prevent damage and prevent the assembly from rotating on the battery post.
- 2) Torque Mark the battery stud.
- 3) Remove protection. Carefully disconnect the hood opening prop rod and store the rod back into position under the hood and close the hood..



While connecting the negative battery cable to the stud, hold the battery sensor in place with one hand while torqueing the 10mm hex nut that secures the cable to the sensor. This will help support the sensor to prevent damage and prevent the assembly from rotating on the battery post causing a poor connection. ⚠



Torque mark the battery stud ⚠

2022MY WRX Exterior AD Approach Mirror Port Installation Instructions

Check Your Work

- Ensure the mirror glass on both mirrors are installed correctly by pulling out on the A/D Approach mirror glass to ensure there is no exposed wires and the mirror is secure in place.
- Ensure no scratches or damages to the outer mirror upper and lower covers.
- Ensure the mirror upper and lower covers are properly seated.
- Move the mirror up and down, back and forth (1) time to ensure proper clip engagement on both mirrors.
- Remove all masking tape on both mirror housings.
- Turn the Ignition to the “ON” position and cover the interior mirror light sensor and ensure both exterior mirrors dim in unison with the interior mirror.
- With your foot on the brake pedal, put the gear selector in “R” mode and ensure the mirrors return to the not dimmed mode.
- Using the mirror switch on the driver's front door adjust both mirrors in all extreme positions up/down and left/right. Ensure the exterior mirrors reposition freely.
- Activate heated mirror circuit and verify the heated elements operate.
- Operate the turn signal stalk and observe the turn signal mirror indicator. (If equipped with integral turn signal indicators)
- Ensure mirror glass, mirror housing, and surrounding work area is damage free.
- Ensure the approach light illuminates on both mirrors when door is opened.
- Clean mirror glass and housing.

2022MY WRX Exterior AD Approach Mirror Port Installation Instructions

Work Validation

- Ensure no exposed exterior mirror wires can be seen when inspecting the mirror openings on all four sides.
- Adjust as required.



RH Mirror Shown



The exterior mirror wires are not twisted during the installation.

2022MY WRX Exterior AD Approach Mirror Port Installation Instructions

Document History

<u>Revision</u>	<u>Date</u>	<u>Slide#</u>	<u>Description</u>	<u>Author</u>
A	1/18/2022	N/A	Original Release	RM
B	3/18/2022	9	Updated Photo, Labeling, and Text	RM