



Installation Manual

Shift Boot (WRX RED) (Ultrasuede®)

Genuine Part Number : J1310VC624 Shift Boot (WRX RED)

Applicable Vehicle Model : WRX (2022MY~)

For Installation Operator

This manual describes how to install and handle the Shift Boot.
Before installation, please read this manual for proper installation.
After installation, be sure to hand this manual to the customer.

⚠ Precautions

1. For safety, stop the vehicle on a flat surface and turn off the engine and ensure that the parking brake is applied before starting the installation process.
2. Since connectors have to be detached and attached during the installation process, make sure to disconnect the power cord of battery (-) negative side before handling electrical components. Follow the instructions of the latest service manual for the removal and installation of the (-) negative side cord.
3. When installing this part, be careful enough not to scratch the vehicle or parts with tools.
4. Follow the instructions marked with **⚠ Caution** in the "Installation Procedure" from the next section onward.

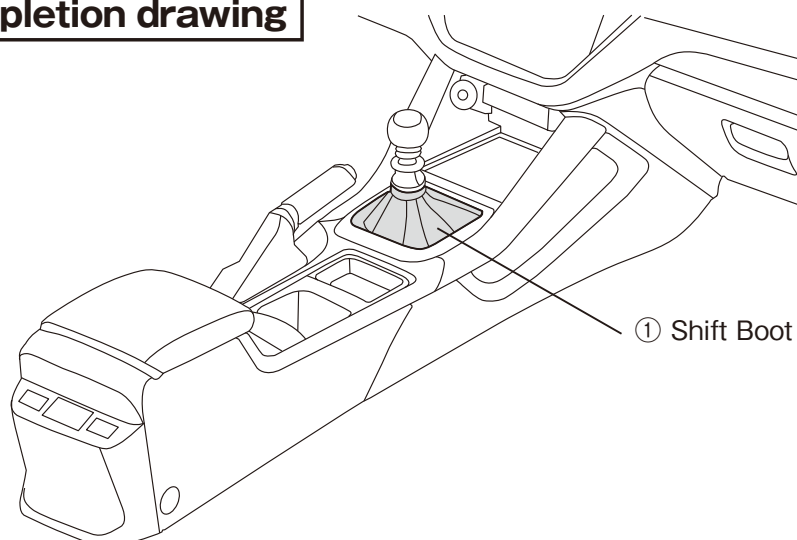
Advice

The things that should be followed and useful to know for this product, are marked with **👉 Advice** in this manual.

Component Part

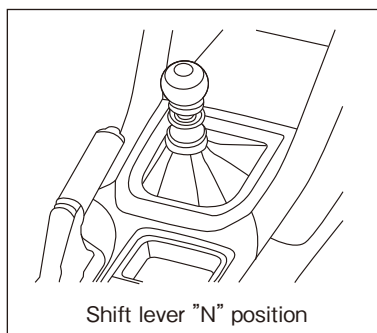
No.	Part Name	Qty
①	Shift Boot	1

Installation completion drawing



Installation procedure

Caution : Remove the ground terminal from the battery before handling electrical components.
Reference : Set the shift lever to "N" position before disconnecting the negative terminal of the battery. Move the seat to the front most position before removing the negative terminal of the battery.



1. Remove Tray ASSY Center Lower.

- (1) Remove the Shift Lever (Figure 1)
- (2) Remove the Tray ASSY Center Lower (Figure 2)
- (3) Remove the Mat from the Tray ASSY Center Lower (Figure 3)

Caution

When removing parts, be careful not to damage the joint portion.

Advice

Tray ASSY Center Lower is fixed at 8 places by clips. You can easily remove it by inserting your hand from the top of the boot to the front side (arrow portion), and hooking your hand on the part to pull it up.

2. The installation shall be completed by restoring the packaged Tray ASSY Center Lower in the reverse order of removal.

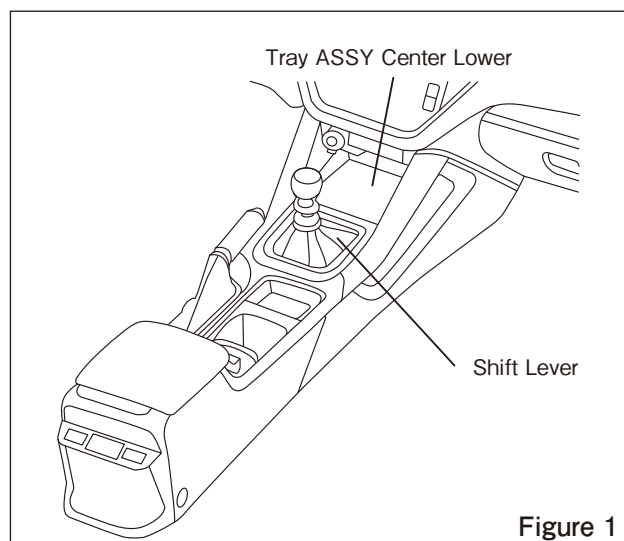


Figure 1

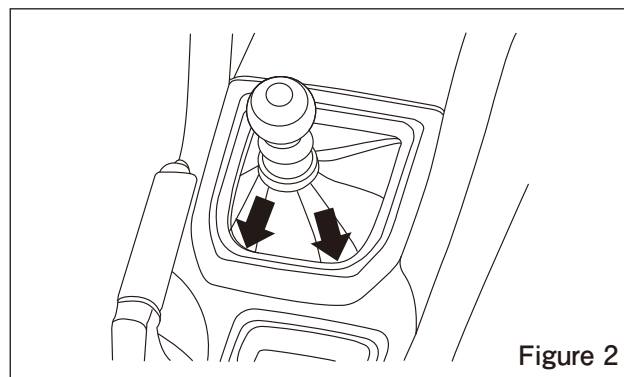


Figure 2

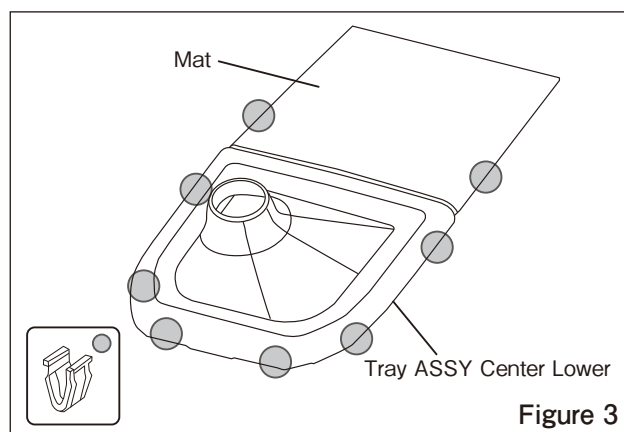


Figure 3

Maintenance Method

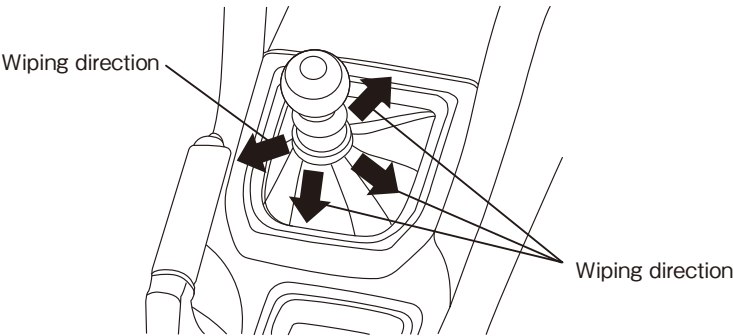
■Maintenance of Ultrasuede®※ Shift Boot

Regular cleaning about once a month is recommended.
Wipe the entire Shift Boot with a clean cloth soaked in lukewarm water of about 40℃ and squeezed firmly.
※Ultrasuede® is a registered trademark of Toray Industries, Inc.

● Cleaning of dirt

If you spill the liquid, lightly apply tissue paper to absorb it. If the dirt cannot be removed, follow the procedure below.

① Lightly soak a cloth in a solution diluted with a neutral detergent to a concentration of 5% to 10%, and squeeze it tightly, then wipe the Shift Boot with the cloth by sliding from top to bottom while pressing the Shift Boot down. (See figure below).



② Lightly soak a soft cloth in lukewarm water of approx. 40℃, squeeze it tightly, and wipe the Shift Boot with the cloth by sliding from top to bottom while pressing the Shift Boot down. Rinse the cloth with lukewarm water and repeat this procedure 3 times to remove the mild detergent.

Revision history

△	Content	Issue Date
00	Newly Established	2022.3.25