


SUBARU
Installation Manual

Instrument Panels - Ultrasuede

Genuine Part Number : J1310VC621
Applicable Model : WRX (2022MY~)

For Installation Operator

This manual describes how to install and handle the Instrument Panels - Ultrasuede.

Please make sure to read this manual before installation for the correct installation. Please hand this manual to the customer after the installation.

⚠ Precautions

1. For your safety, stop the vehicle on a flat place, turn off the engine switch and ensure that the parking brake is applied before starting the installation process.
2. Since connector to be detached and attached, make sure to disconnect the power cord of battery (-) negative side before handling electrical components such as the connector. Follow the instructions in the latest service manual for removing and installing the cord of (-) negative side.
3. When installing, be careful not to damage the vehicle and the Instrument Panels - Ultrasuede parts with tools.
4. Follow the items described using **⚠ Caution** mark in the "Installation procedure" on the following pages for installation.

Advice

This document uses the **👉 Advice** mark to indicate items to be followed and useful tips for the products.

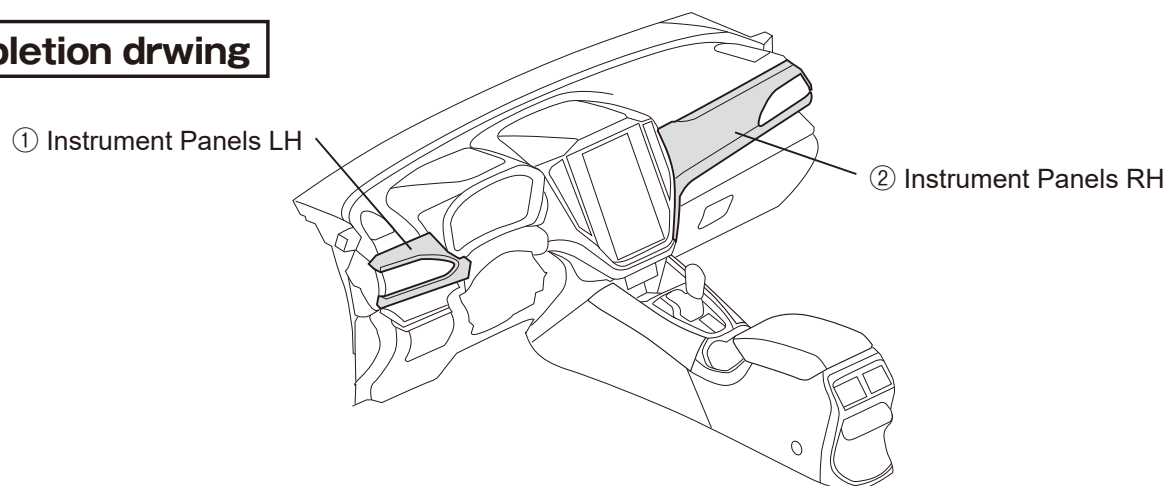
Component Part

No.	Component Part No.	Quantity
①	Instrument Panels LH	1
②	Instrument Panels RH	1

Tools to be used

- Handy remover
- Phillips screwdriver

Completion drawing



Installation procedure

1. Installation of Instrument Panels LH

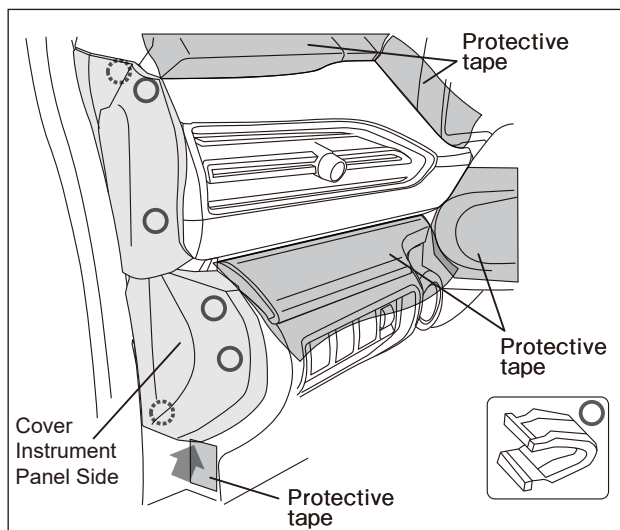
1. Please paste protective tape (masking tape, etc.) on dark areas in the illustration.
2. Insert the remover into the arrow in the illustration and remove the Cover Instrument Panel Side.

⚠ Caution

Be careful not to scratch the Instrument Panel and Cover Instrument Panel Side.

👉 Advice

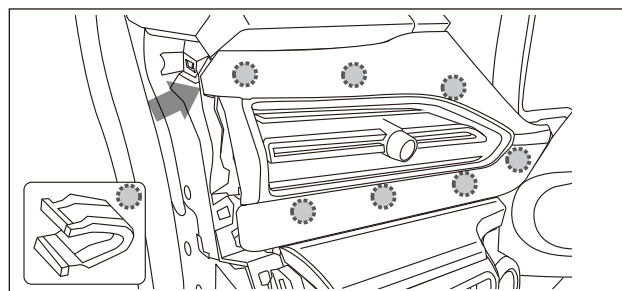
Cover Instrument Panel side is fixed with 6 clips. When attaching the cover, you can prevent the cover from floating by attaching it from the back side (broken line) to the front side.



3. Remove the Instrument Panel Ornament.

👉 Advice

The Instrument Panel is fixed with 7 clips. It is easy to remove by pulling it toward you from the outside of the vehicle (arrow portion).
※Grill Side Vents are attached to the Instrument Panel Ornament.

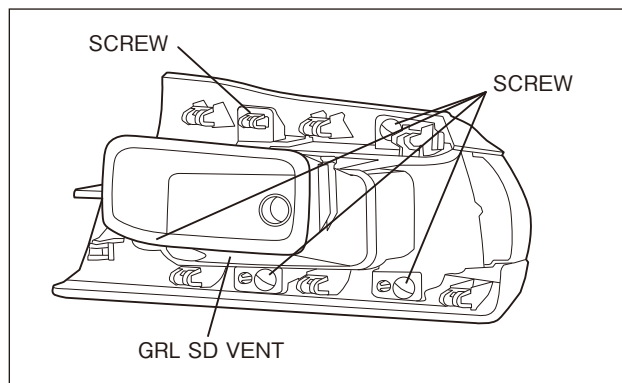


4. Please remove Grill Side Vent from the removed Instrument Panel Ornament

- (1) Remove the screws (4places).
- (2) Remove the clip engagement (1place), and remove Grill Side Vents from the Instrument Panel Ornament.

⚠ Caution

Please keep the removed screw in a safe place as it will be used when assembling.



5. Please attach the removed Grill Side Vent to
①Instrument Panel Ornament LH.

6. Restore ①Instrument Panel Ornament LH and cover Instrument Panel side in the reverse order to removal.
Installation work of ①Instrument Panel Ornament LH is completed.

2. Installation of Instrument Panels RH

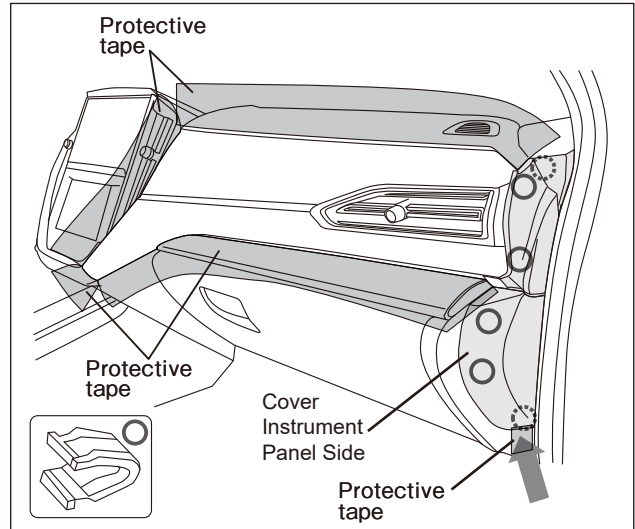
1. Please paste protective tape (masking tape, etc.) the dark areas in the illustration.
2. Insert the remover into the arrow in the illustration and remove Cover Instrument Panel Side.

⚠ Caution

Be careful not to scratch the Instrument Panel and Cover Instrument Panel Side.

👉 Advice

Cover Instrument Panel side is fixed with 6 clips. When attaching the cover, you can prevent the cover from floating by attaching it from the back side (broken line) to the front side.



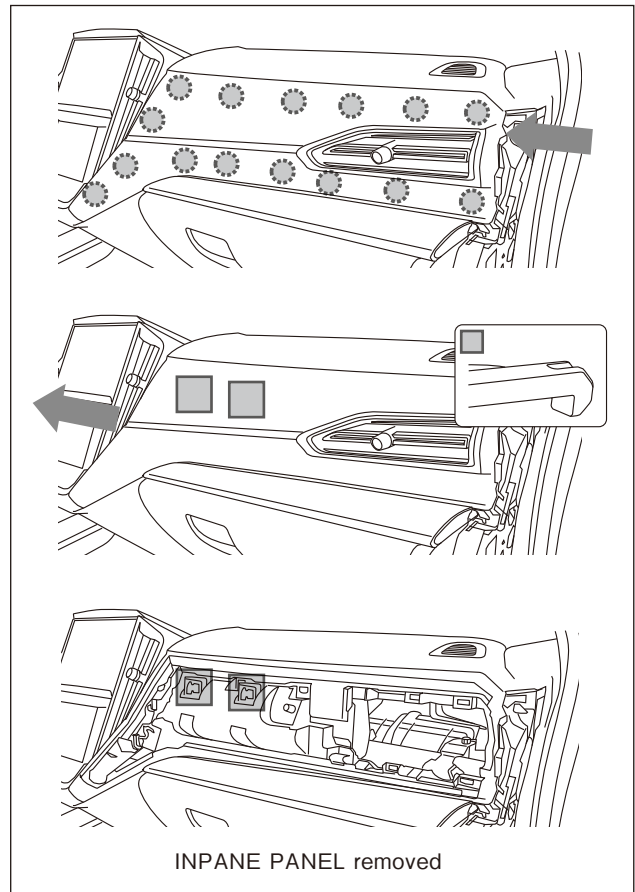
3. Remove the Instrument Panel Ornament.
 - (1) Remove the clip engagement of the circled (○) portion.

👉 Advice

The Instrument Panel is fixed with 15 clips. It is easy to remove by pulling it toward you from the outside of the vehicle (arrow part).
 ※ Grill Side Vent is attached to the Instrument Panel Ornament.

⚠ Caution

The Instrument Panel Ornament can be temporarily assembled with two claws other than the clips. (■ portion)
 If you pull it too far toward you, your nails and Instrument Panel may be damaged.
 In addition, since Instrument Panel Ornaments are easily deformed, please be careful when handling them when attaching or detaching or replacing parts.



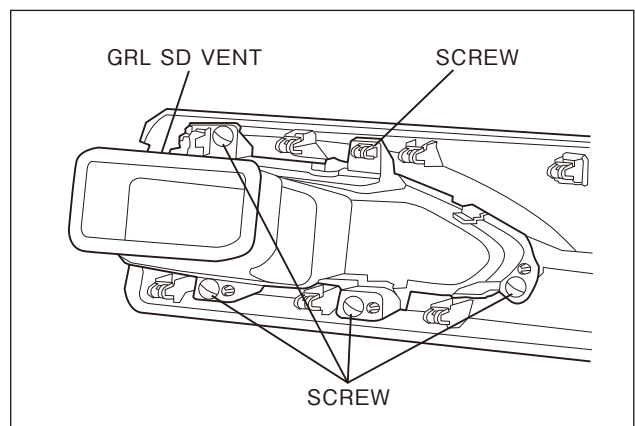
- (2) When all the clips are disengaged, move the Instrument Panel sideways toward the inside of the vehicle (in the arrow direction in the middle illustration) until it stops, and pull it out toward you.
4. Remove the Grill Side Vent from the removed Instrument Panel Ornament.
 - (1) Remove the screws (4places).
 - (2) Remove the clip engagement (1place), and remove the Grill Side Vent from the Instrument Panel Ornament.

⚠ Caution

Please keep the removed screw in a safe place as it will be used when assembling.

👉 Advice

Grill Side Vent is fixed with 4 screws and 1 clip.



5. Please attach the removed Grill Side Vent to
② Instrument Panel Ornament RH.

6. Restore ② Instrument Panel Ornament RH
and cover Instrument Panel side in the
reverse order to removal. Installation work
of ② Instrument Panel Ornament RH is
completed.