



SUBARU

INSTALLATION INSTRUCTIONS

SUBARU

PART NUMBER: J101SSJ200

DESCRIPTION: FORESTER Body Side Molding

PRE-INSTALLATION NOTES

NOTE: VEHICLE AND ALL INSTALLATION MATERIAL TEMPERATURES MUST BE 60°F (16°C) TO 86°F (31°C) BEFORE AND DURING INSTALLATION PROCESS.

NOTE: IF INSTALLING BODY SIDE MOLDING ALONG WITH DOOR EDGE GUARDS, THE BODY SIDE MOLDING MUST BE INSTALLED FIRST TO ALLOW PROPER ALIGNMENT OF THE INSTALLATION TEMPLATE.

KIT CONTENTS:

A.



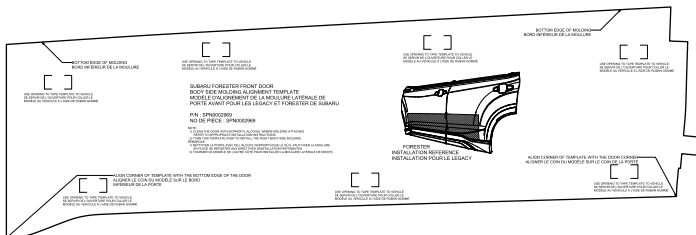
Body Side Molding 4 pcs.

B.

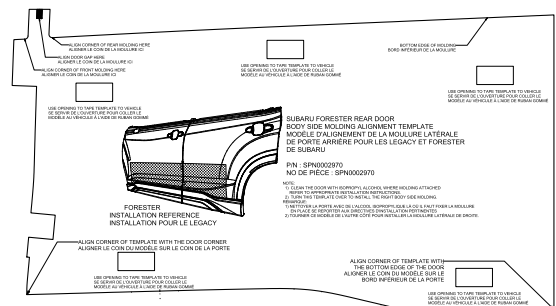


Alcohol Wipe x 4

C. Installation Template Front Door x 1



Installation Template Rear Door x 1



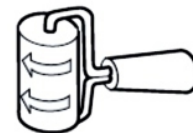
TOOLS REQUIRED:



Masking Tape



Wash Supplies



Rubber Roller

PART NUMBER:

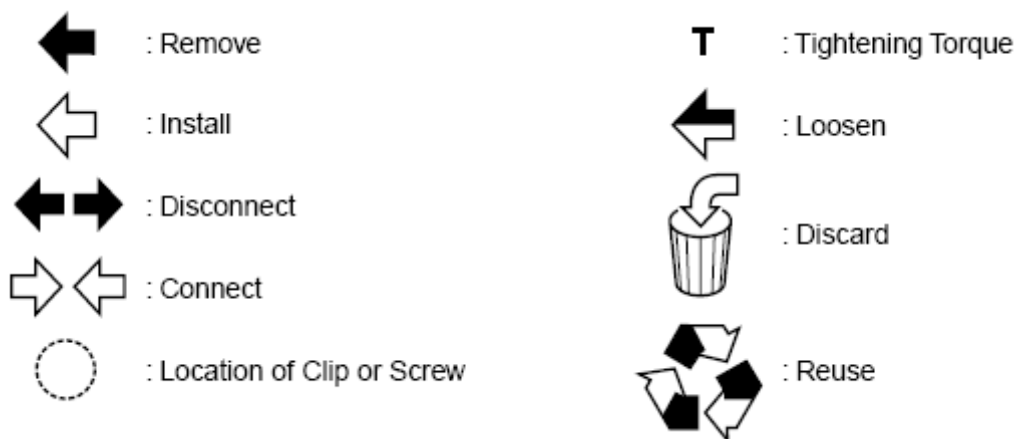
ISSUE:
REV-1

DATE:
5-16-18

SUBARU OF AMERICA

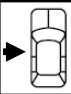
PAGE
1/4

MEANING OF CHARACTERS:




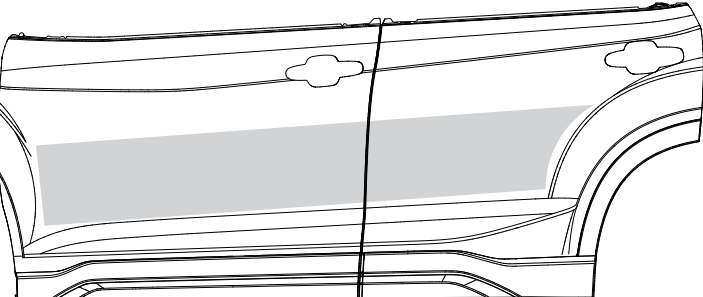
Surface Preparation


1



Make sure that all shaded installation surfaces (shown below) are washed and free of dirt, grease, and debris. Next use the alcohol wipes included in the kit and then dry. Inspect vehicle for damage before installation of body side molding. Before beginning, vehicle and body side molding must be at room temperature. If the temperature is below 60F (21 C) or above 110F (43 C). Let vehicle sit indoors until the doors and body side molding are at room temperature.

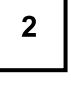






Body Side Molding Installation

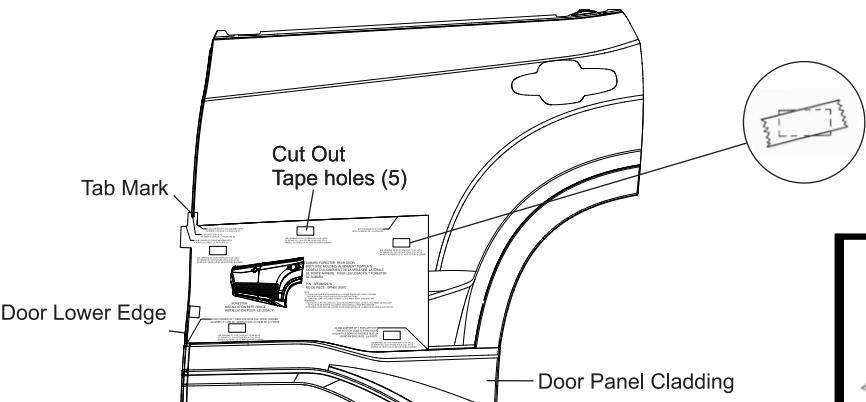
2



Position the rear body side molding location template in place as shown. Make sure the template is aligned with front lower edge of the rear door and top of the door panel cladding. Then check the top tab mark so that it lines up with door gap, place tape over the cut out hole(5).


Tab Mark

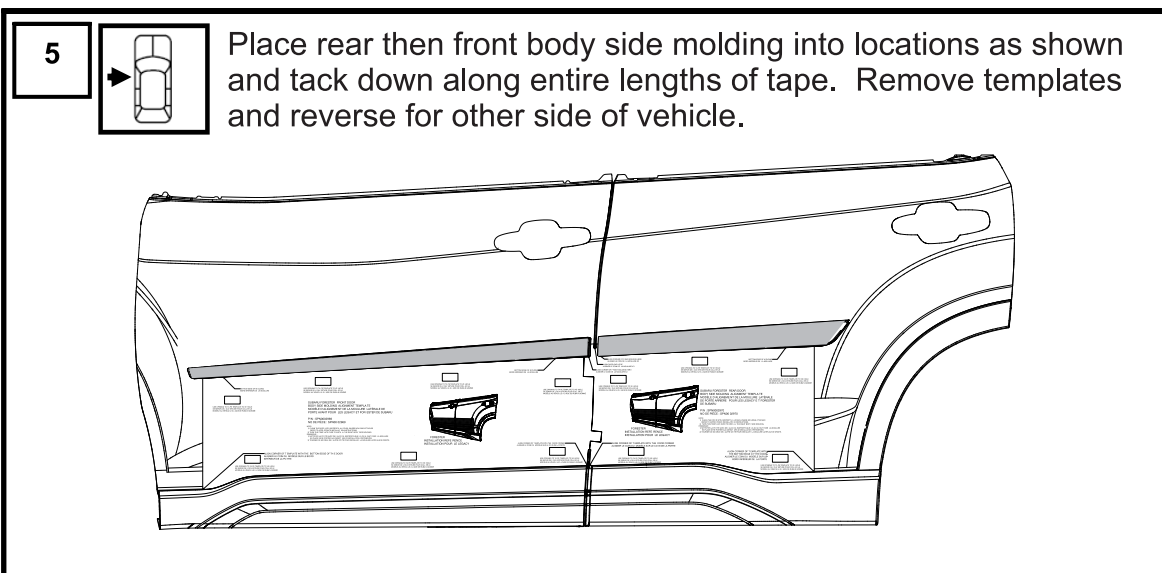
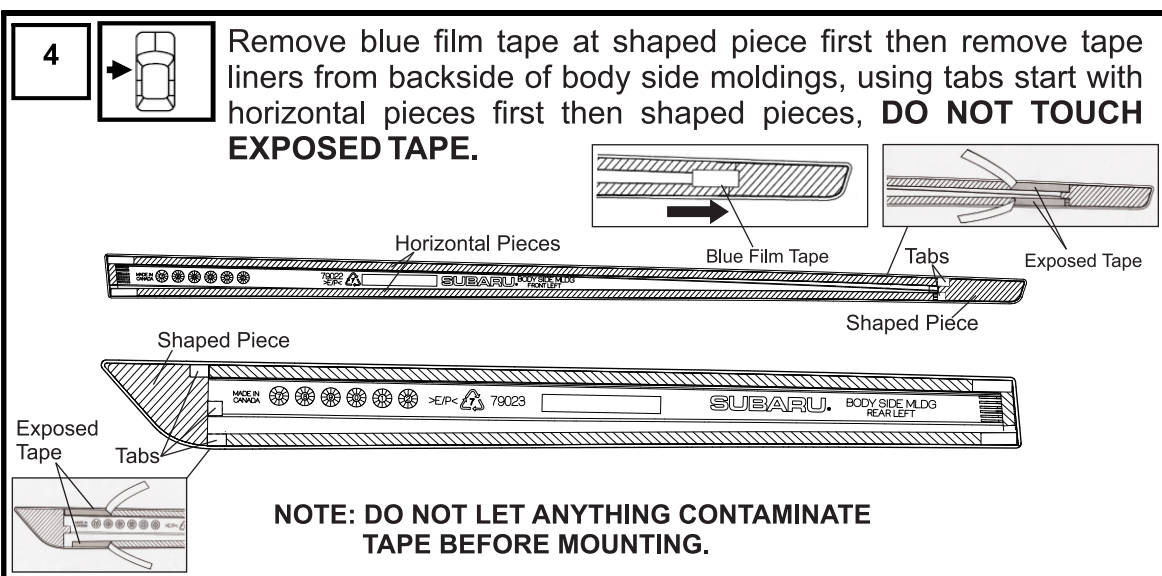
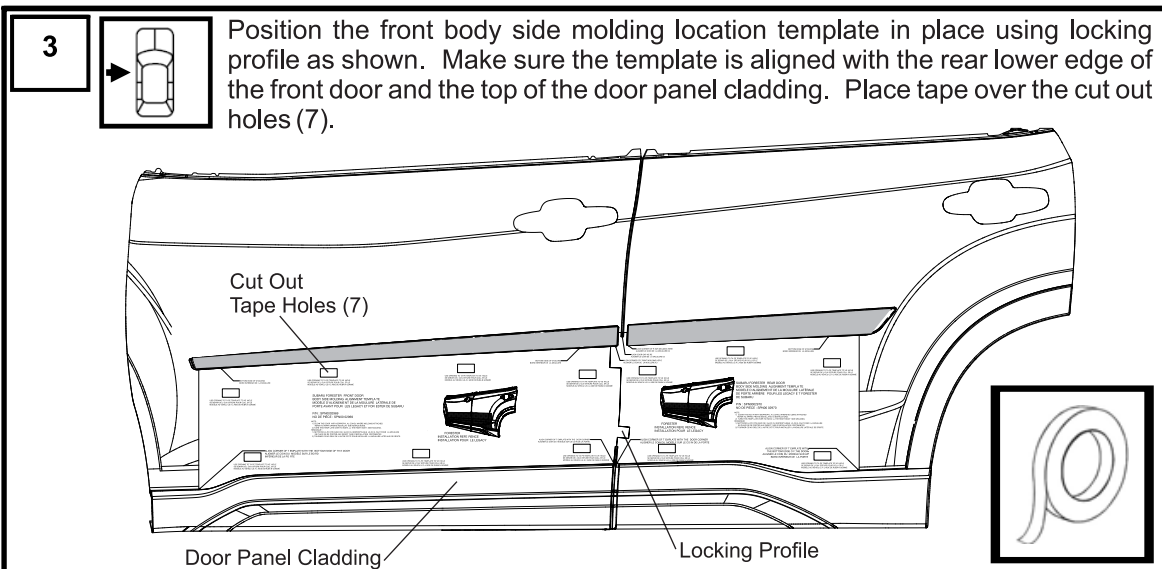
Door Lower Edge



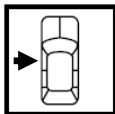
Cut Out Tape holes (5)

Door Panel Cladding

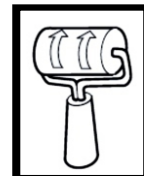
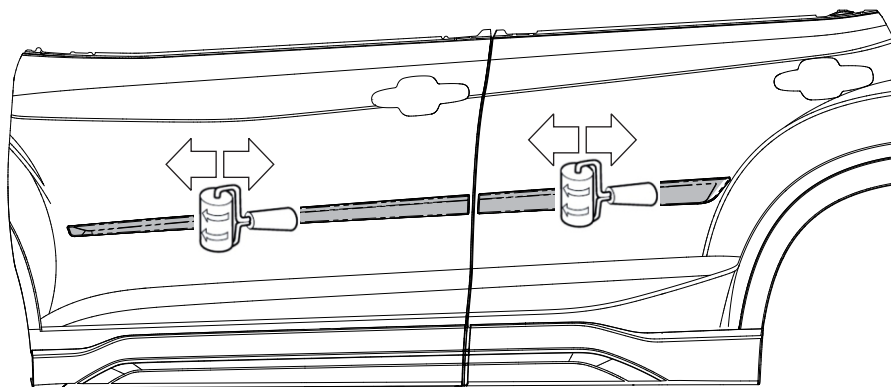




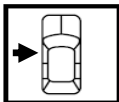
6



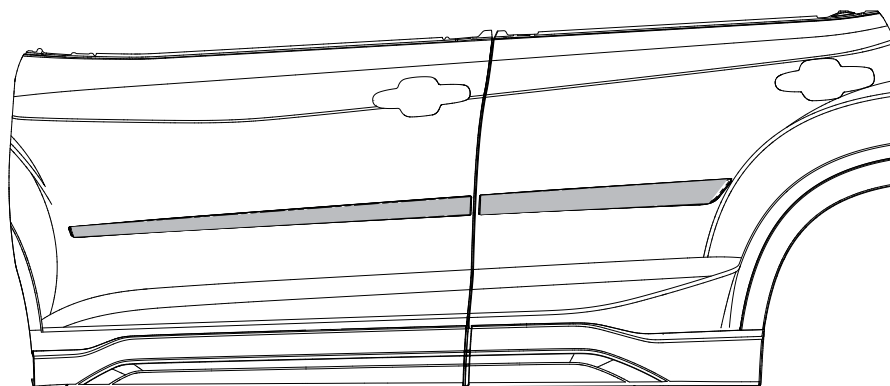
Using a rubber roller, apply firm, even pressure across the body side molding to adhere all pieces of tape to vehicle. Repeat procedure for the passenger side.



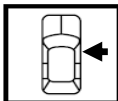
7



Installation is complete for drivers side of vehicle.



8



Repeat steps 1 through 7 on passengers side of vehicle, using other side of paper template.