

2022MY WRX Interior Auto Dimming Compass Mirror with HomeLink Port Installation Instructions



Ensure the VIN matches the workorder and the vehicle date is in the lock period and there are no "Holds" on the vehicle for any reason.
Ensure the vehicle calls for the accessory installation.



CAUTION: ACCESSORY INSTALLATIONS PERFORMED BY UNTRAINED PERSONS COULD RESULT IN SERIOUS INJURY TO THOSE PERSONS OR TO OTHERS.

Subaru Work Instructions are intended for use by professional accessory installers ONLY. They are written to provide step by step accessory installation instruction for a fast-paced production environment. Properly trained accessory installers have the equipment, tools, safety instructions and know-how to do the job correctly and safely. Included in this information are the use of "special" accessory installation fixtures and templates that are not available to the Retailers or general public. Please refer to the Retailer Installation Instructions found in Subaru Tech Info System (STIS).

SUBARU OF AMERICA, INC. IS "ISO 14001 COMPLIANT"

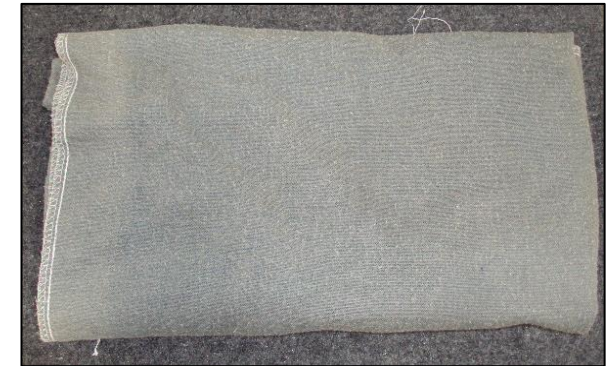
The international standard for excellence in Environmental Management Systems. Please recycle or dispose of automotive products in a manner that is friendly to our environment and in accordance with all local, state and federal laws and regulations.



2022MY WRX Interior Auto Dimming Compass Mirror Port Installation Instructions

Required Tools and Supplies

- Torque screwdriver with (in. lbs.) with Torx T20 Bit and #2 Phillips Bit
- #2 Phillips Head Screwdriver
- ¼" torque wrench
- ¼" drive ratchet with 10mm and 8mm sockets
- ¼" drive 6" extension
- Nylon trim tool
- Clean towels
- Window Glass Cleaner (Optional)
- Dash protection
- Masking tape



2022MY WRX Interior Auto Dimming Compass Mirror Port Installation Instructions

Interior Auto Dimming Compass Mirror with HomeLink on models with EyeSight™

Slides 3-13



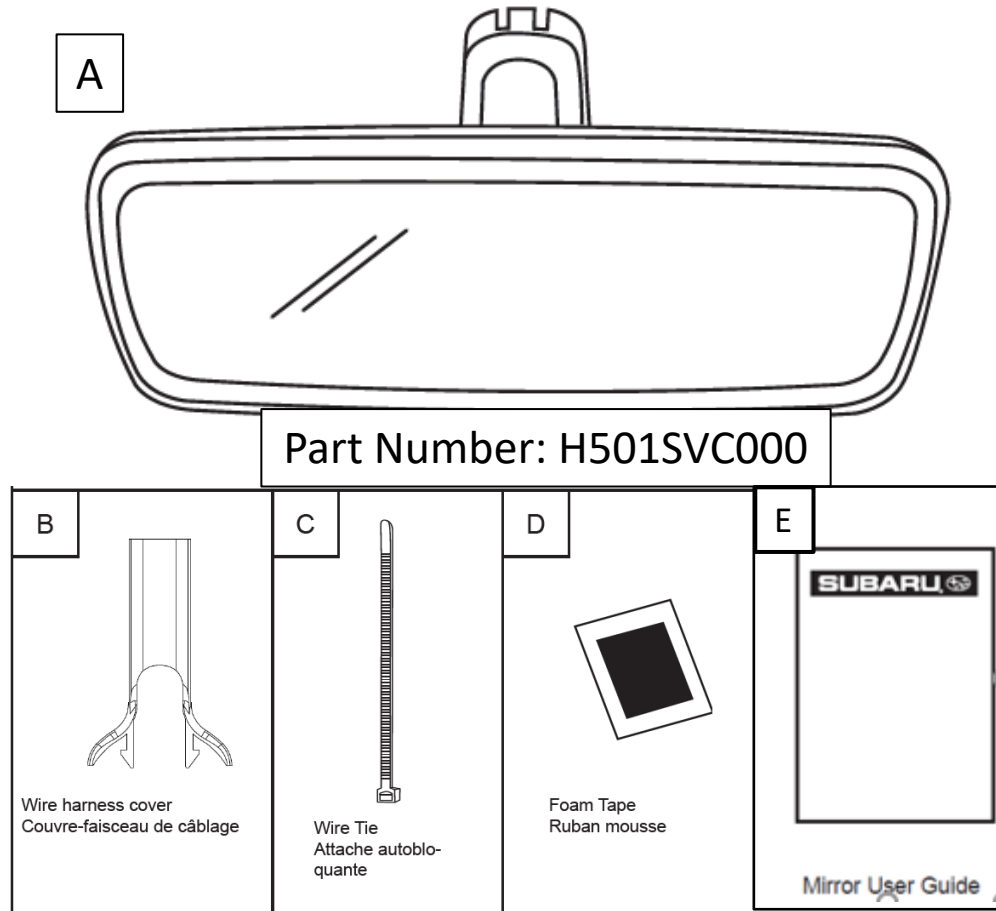
2022MY WRX Interior Auto Dimming Compass Mirror Port Installation Instructions

Inspect the EyeSight Interior Mirror Kit parts to ensure no missing parts or part defects:

Kit Contents

- A) AD Mirror
- B) Wire Harness Cover
- C) Wire Tie
- D) Foam Tape
- E) Owner's User Guide


CVT Models with EyeSight Only




	STOP: Damage may occur to the vehicle/part. Do not proceed until process has been complied with.
	Work Hazard Analysis (WHA): Operator safety-Use caution to avoid risk of injury.
	Caution: A process that must be carefully observed in order to reduce the risk of damage to the accessory/vehicle and to ensure a quality installation.
	Revision Mark/Highlight: This mark highlights a change in installation with respect to the previous issue.
	Work Instruction Training (WIT): Key point that designates an important step to ensure the quality of the installation.
	Recycle: Item to be recycled.
	Safety Torque - This mark indicates that a torque is related to safety

2022MY WRX Interior Auto Dimming Compass Mirror Port Installation Instructions



While disconnecting the negative battery cable from the stud, hold the battery sensor in place with one hand while loosening the 10mm hex nut that secures the cable to the sensor. This will help support the sensor to prevent damage and also prevent the assembly from rotating on the battery post causing a poor connection. 

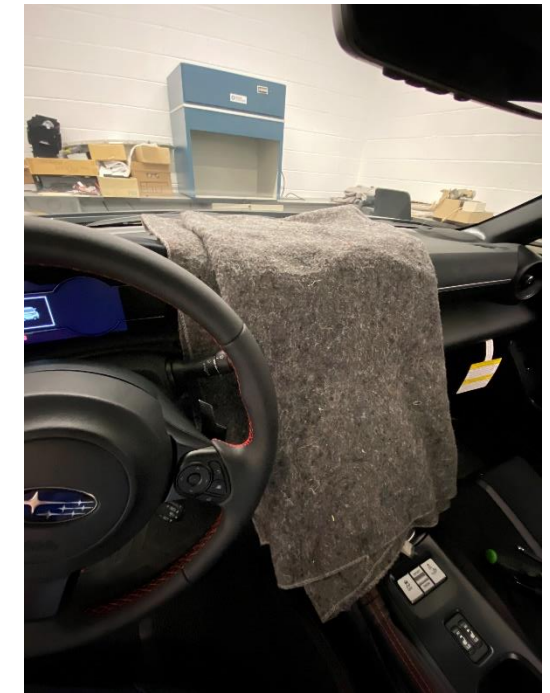
Open the hood and use the prop rod to hold the hood in the open position. While holding the battery sensor in place with one hand, use a ¼" drive ratchet and 10mm socket to remove the negative battery cable from the negative battery stud. Do not remove negative cable from the battery post. Position / protect the negative cable so it cannot accidentally touch body ground or the negative the battery terminal. Allow (60) seconds before the next installation step to ensure the airbag power supply is discharged.

 Carefully remove the negative battery cable from the battery stud only. Do not allow the negative cable accidentally ground during the accessory installation.

2022MY WRX Interior Auto Dimming Compass Mirror Port Installation Instructions

Preparation

1. Place protection over the RH or LH side sill/door jam when preparing to perform work inside vehicle. Note: If you are working on the LF side apply the same protection.
2. Place protection center dash and shifter plate trim.



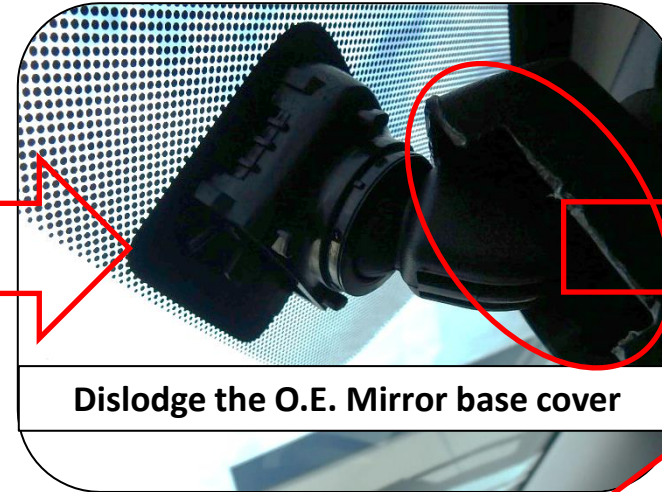
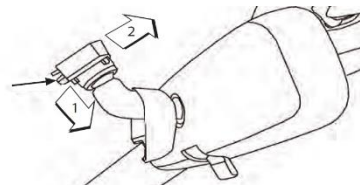
2022MY WRX Interior Auto Dimming Compass Mirror Port Installation Instructions

Remove the Factory Mirror

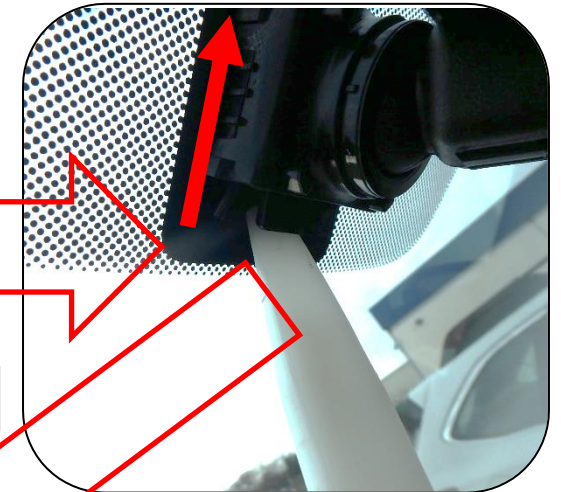
1. Remove the O.E. factory installed Interior Mirror by using a trim stick and carefully dislodge the plastic mirror base cover away from the windshield to expose the tab that retain the O.E. Mirror to the windshield.
2. Carefully pull out on the tab and pull up on the O.E. mirror to remove it from the windshield mirror button.
3. Inspect the mirror button for damages.
4. Properly recycle/ dispose O.E. mirror.



O.E. Mirror



Dislodge the O.E. Mirror base cover



Lift up on Mirror to remove

Using a trim tool pry out on the locking tab



Properly recycle/ dispose O.E. mirror.



Never remove the OE mirror by pulling directly off the windshield under any circumstances. Not following the Manufacturers OEM mirror removal process will result in windshield damage.

2022MY WRX Interior Auto Dimming Compass Mirror with HomeLink Port Installation Instructions

Preparation W/EyeSight

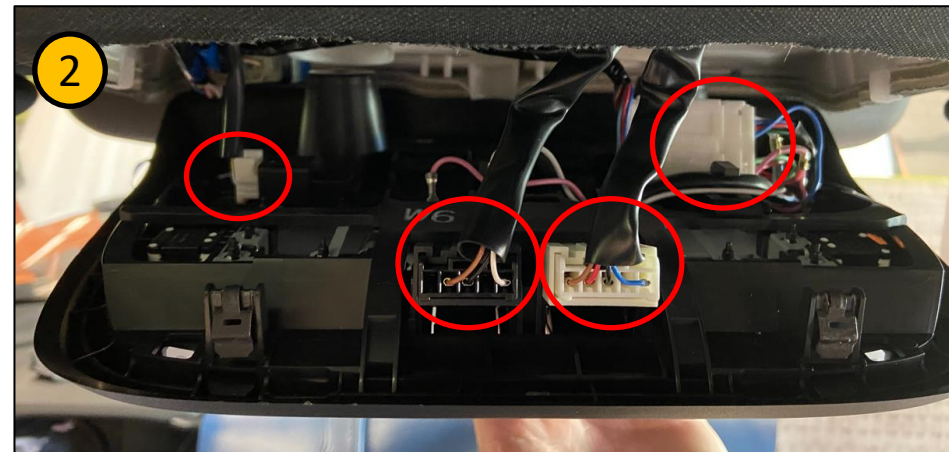
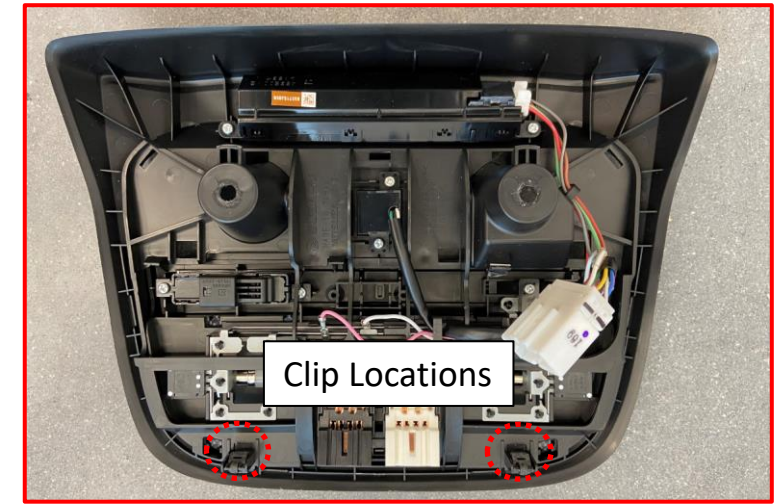
1. Apply masking tape to the overhead console along the retaining bolt access cover.
2. Using a nylon trim tool, carefully remove the retaining screw access cover on the overhead console.
3. Using a #2 Phillips screwdriver, Remove the (2) screws securing the overhead console to the headliner. (Save the screws for reinstallation)



2022MY WRX Interior Auto Dimming Compass Mirror with HomeLink Port Installation Instructions

Preparation W/EyeSight

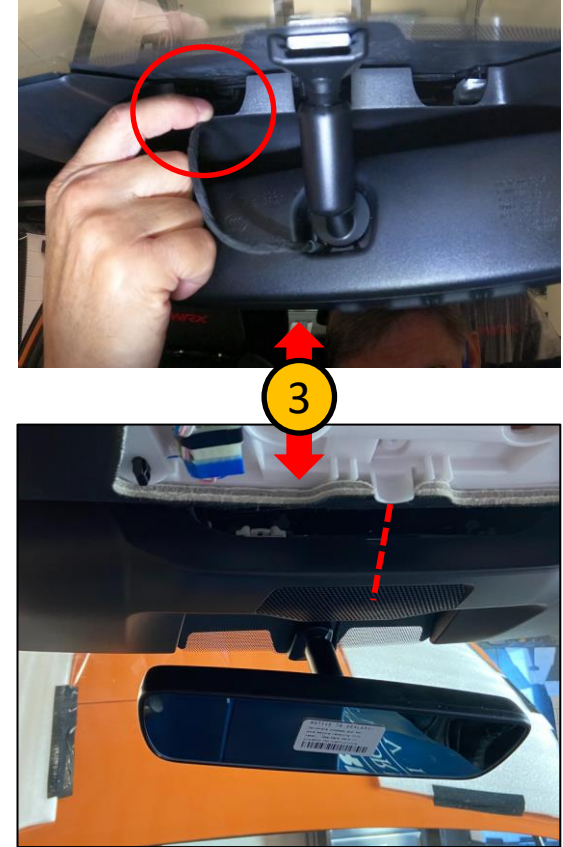
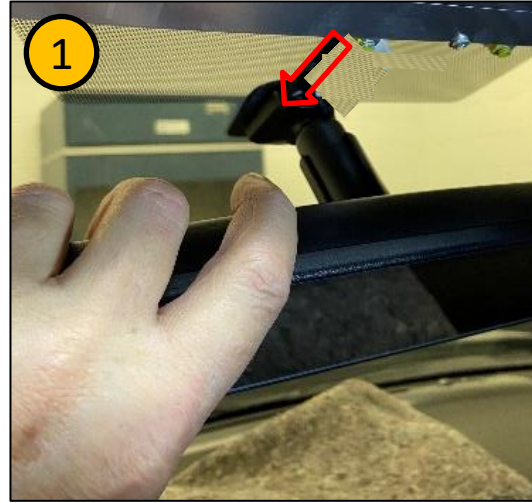
1. Carefully insert your fingers between the headliner and the overhead console. Disengage the rear retaining clips by applying light downward pressure.
2. Lower the overhead console and disconnect the (4) electrical connectors. Set the overhead console aside on a clean protected surface.



2022MY WRX Interior Auto Dimming Compass Mirror with HomeLink Port Installation Instructions


Installation W/EyeSight

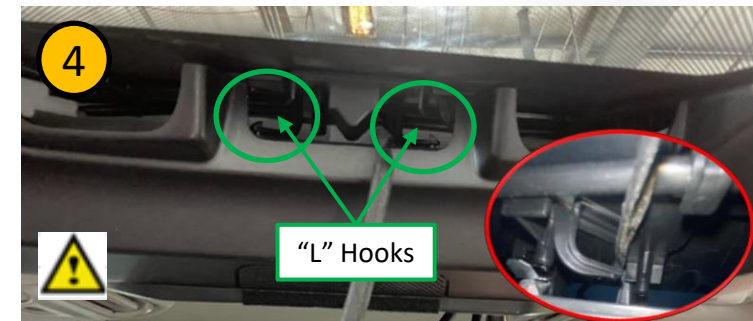
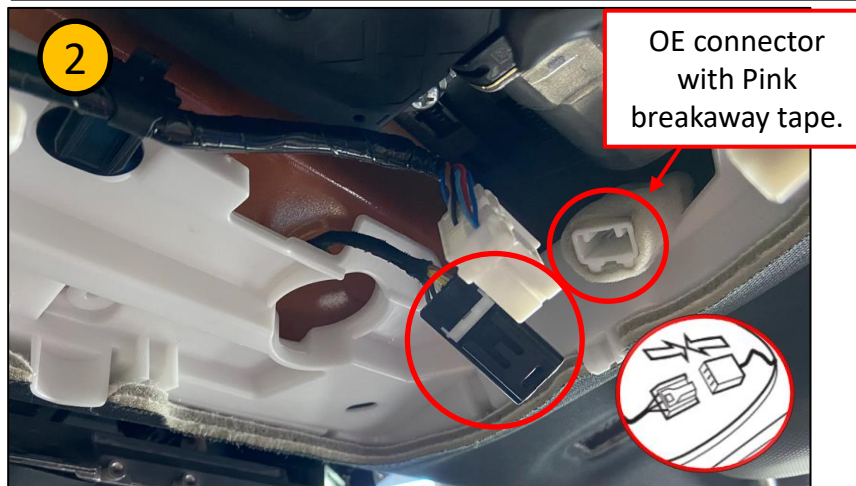
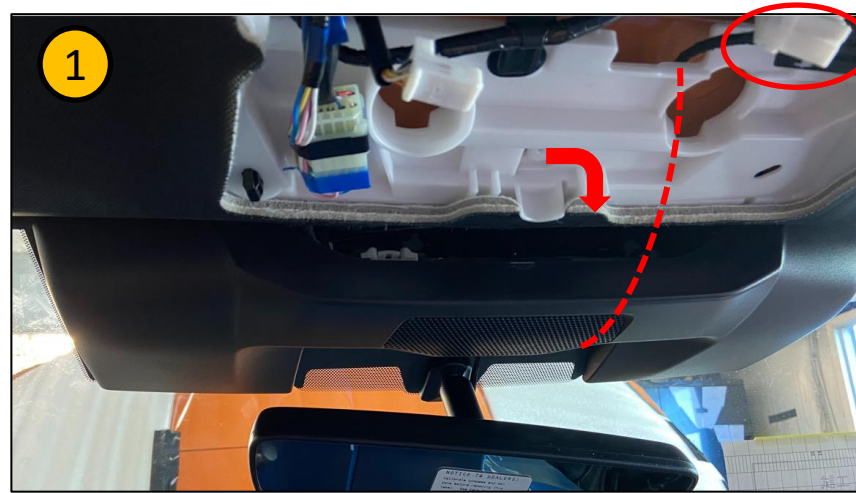
1. Install the A/D Compass Mirror in place by pushing the mirror down in place over the windshield mirror button.
2. Tighten the T20 Torx screw by using a Torque Screwdriver set to 15.0-inch lbs.
3. Carefully Feed the mirror jumper harness through the right side opening of the EyeSight camera cover.



2022MY WRX Interior Auto Dimming Compass Mirror with HomeLink Port Installation Instructions


Installation W/EyeSight

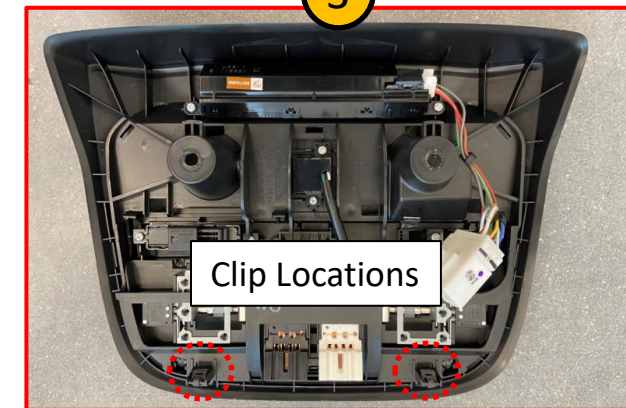
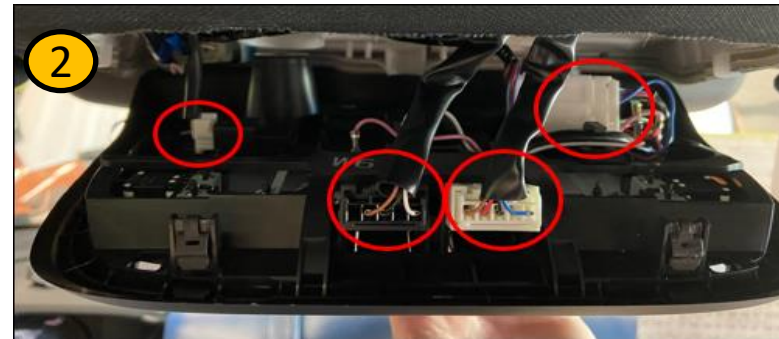
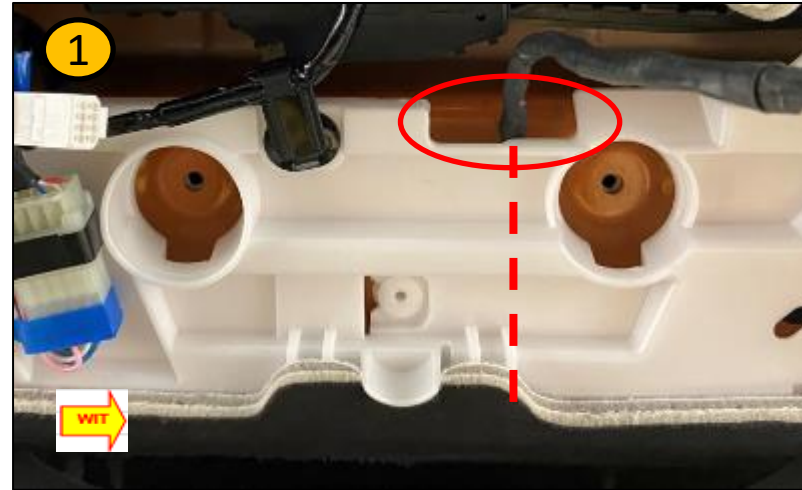
1. Carefully pull down on the headliner trim while feeding the mirror connector overtop.
2. Plug the mirror harness connector into the OE mirror connector in the location shown. (Confirm connection with push-pull method)
3. Pull down slightly on the Eyesight cover and move the mirror harness from the right side opening to the center opening.
4. Ensure the mirror harness is routed inside one of the (2) interior cover "L" hooks to prevent the wire from resting on the EyeSight Camera.




2022MY WRX Interior Auto Dimming Compass Mirror Port Installation Instructions

Reassemble W/EyeSight

1. Ensure the wire harness is routed properly in the center headliner trim to avoid any pinch / crush risk during overhead console installation.

2. While holding the overhead console in one hand, reconnect the (4) OE connectors. (Confirm proper connection with push-pull method)
3. Align the (2) rear console clips and carefully push up on the clip locations to re-seat the overhead console to the headliner.

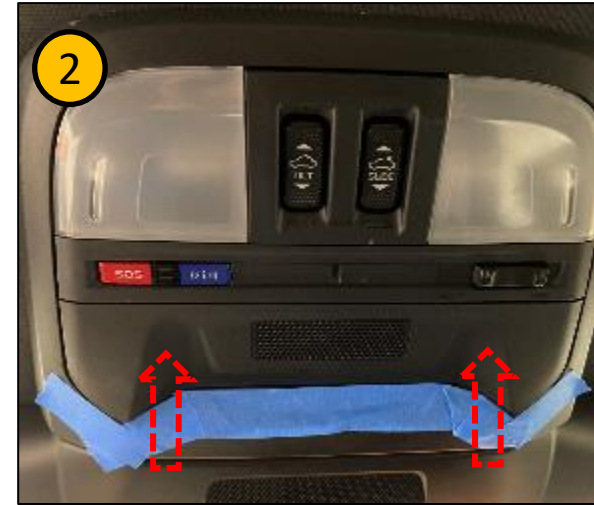


2022MY WRX Interior Auto Dimming Compass Mirror Port Installation Instructions

Reassemble W/EyeSight

1. Reinstall the (2) screws previously removed. (Do not overtighten.)
2. Reinstall the bolt cover panel by inserting the (3) tabs facing the rear of the vehicle first, then push up to engage the front of the cover panel to secure it in place.
3. Remove masking tape from overhead console.

➤ Instructions continue on Slide #22



2022MY WRX Interior Auto Dimming Compass Mirror Port Installation Instructions

Interior Auto Dimming Compass Mirror with HomeLink on models without EyeSight™

Slides 14-24

2022MY WRX Interior Auto Dimming Compass Mirror with HomeLink Port Installation Instructions

Manuel Transmission Models without EyeSight Only

Inspect the Non-EyeSight AD Compass Mirror with HomeLink to ensure no damage or part defects:

Kit Contents

A) AD Compass Mirror With HomeLink.



A

Part Number: H501SVC100

Note: The Non-EyeSight AD Compass Mirror with HomeLink utilizes a high beam assist sensor incorporated into the mirror assembly.



Stop: Damage may occur to the vehicle/part. Do not proceed until process has been complied with.



Work Hazard Analysis (WHA): Operator safety-Use caution to avoid risk of injury.



Caution: A process that must be carefully observed in order to reduce the risk of damage to the accessory/vehicle and to ensure a quality installation.

||

Revision Mark/Highlight: This mark highlights a change in installation with respect to the previous issue.



Work Instruction Training (WIT): Key point that designates an important step to ensure the quality of the installation.



Recycle: Item to be recycled.




Safety Torque - This mark indicates that a torque is related to safety




2022MY WRX Interior Auto Dimming Compass Mirror Port Installation Instructions

Battery Terminal Stud Removal



While disconnecting the negative battery cable from the stud, hold the battery sensor in place with one hand while loosening the 10mm hex nut that secures the cable to the sensor. This will help support the sensor to prevent damage and also prevent the assembly from rotating on the battery post causing a poor connection. 

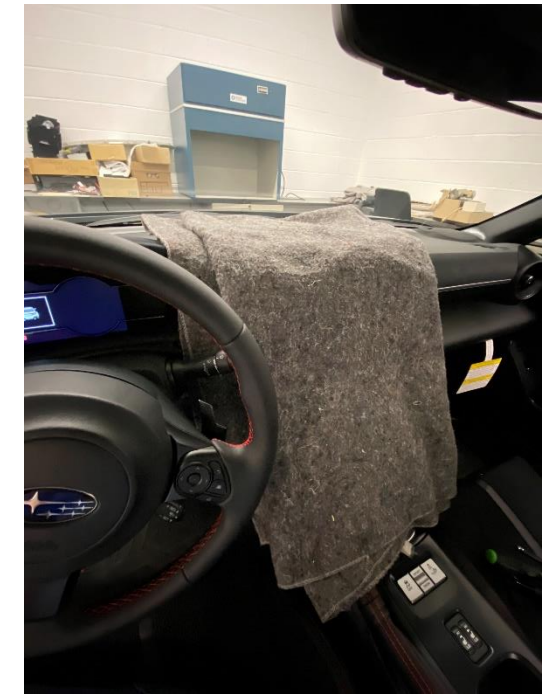
Open the hood and use the prop rod to hold the hood in the open position. While holding the battery sensor in place with one hand, use a ¼" drive ratchet and 10mm socket to remove the negative battery cable from the negative battery stud. Do not remove negative cable from the battery post. Position / protect the negative cable so it cannot accidentally touch body ground or the negative battery terminal. Allow (60) seconds before the next installation step to ensure the airbag power supply is discharged.

 Carefully remove the negative battery cable from the battery stud only. Do not allow the negative cable accidentally ground during the accessory installation.

2022MY WRX Interior Auto Dimming Compass Mirror Port Installation Instructions

Preparation

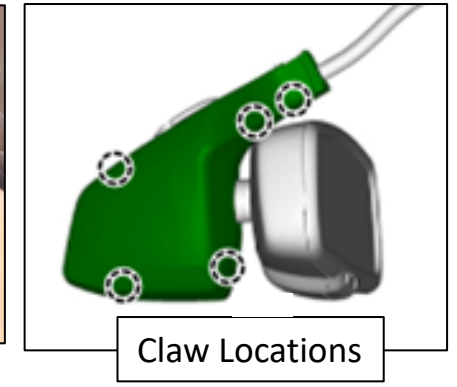
1. Place protection over the RH or LH side sill/door jam when preparing to perform work inside vehicle. Note: If you are working on the LF side apply the same protection.
2. Place protection center dash and shifter plate trim.



2022MY WRX Interior Auto Dimming Compass Mirror Port Installation Instructions

Preparation W/O EyeSight

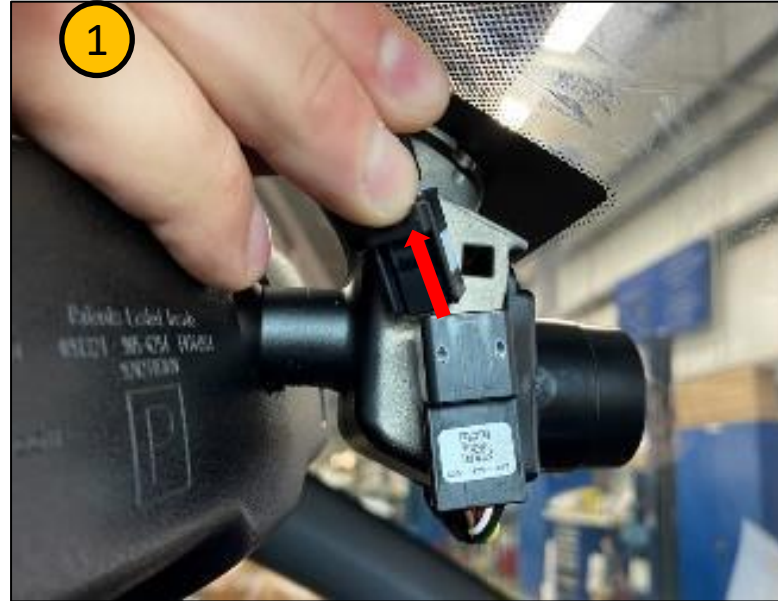
1. Using a nylon trim tool, carefully remove the wiring upper trim cover from the compass mirror.
2. To separate and remove the lower trim covers, carefully insert a nylon trim tool on an angle where the cover halves meet at the bottom seam. Gently pry apart to disengage the lower retaining claw. Continue to separate the remaining cover claws and remove the covers. Set aside for reinstallation.



2022MY WRX Interior Auto Dimming Compass Mirror Port Installation Instructions

Preparation W/O EyeSight

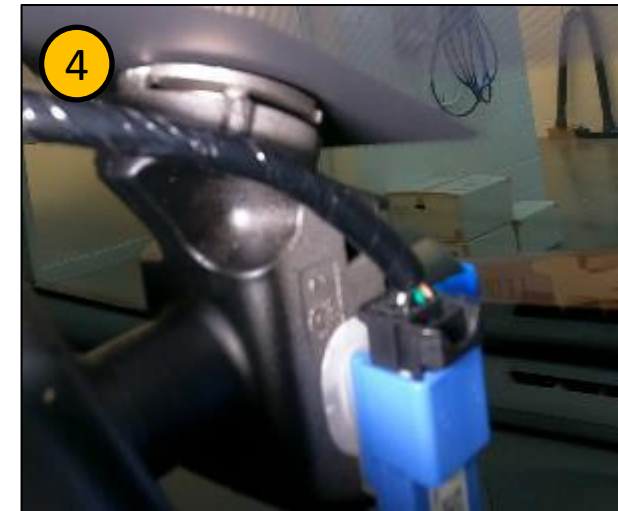
1. Unplug the OE compass mirror.
2. Firmly grab the OE compass mirror and remove by rotating and pulling away simultaneously from the windshield mounting button. (Properly recycle/dispose O.E. mirror)



2022MY WRX Interior Auto Dimming Compass Mirror Port Installation Instructions

Installation W/O EyeSight

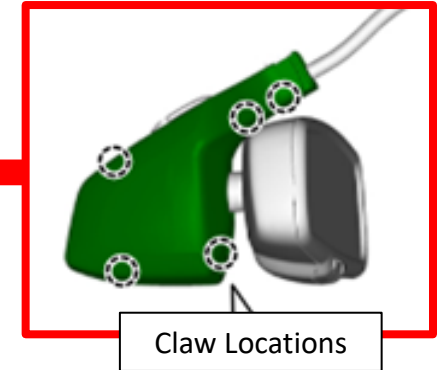
1. Apply protective masking tape on the High Beam Assist sensor.
2. Install the A/D Compass Mirror with HomeLink by aligning the mirror retention clips with the windshield mirror button and pressing against the mirror to seat the mirror.
3. Rotate the mirror until properly aligned with the reference notch shown.
4. Plug in the AD Compass Mirror with HomeLink. (Confirm connection with push-pull method)



2022MY WRX Interior Auto Dimming Compass Mirror Port Installation Instructions

Installation W/O EyeSight

1. Remove protective tape from high beam assist sensor.
2. Reinstall lower mirror trim covers and ensure all claws fully engaged.
3. Reinstall the upper mirror trim cover. Ensure trim cover is fully seated.



2022MY WRX Interior Auto Dimming Compass Mirror Port Installation Instructions

Reassemble

1. Remove vehicle protection.
2. Place mirror operation information document in glove box.



2022MY WRX Interior Auto Dimming Compass Mirror Port Installation Instructions



While connecting the negative battery cable to the stud, hold the battery sensor in place with one hand while torquing the 10mm hex nut that secures the cable to the sensor. This will help support the sensor to prevent damage and prevent the assembly from rotating on the battery post causing a poor connection. ⚠

Re-connect the negative cable by reinstalling the saved 10mm nut on the stud. Use a ¼" drive torque wrench and a 10mm socket, tighten the cable nut to 66 Inch Lbs. while holding the sensor to prevent damage and prevent the assembly from rotating on the battery post.

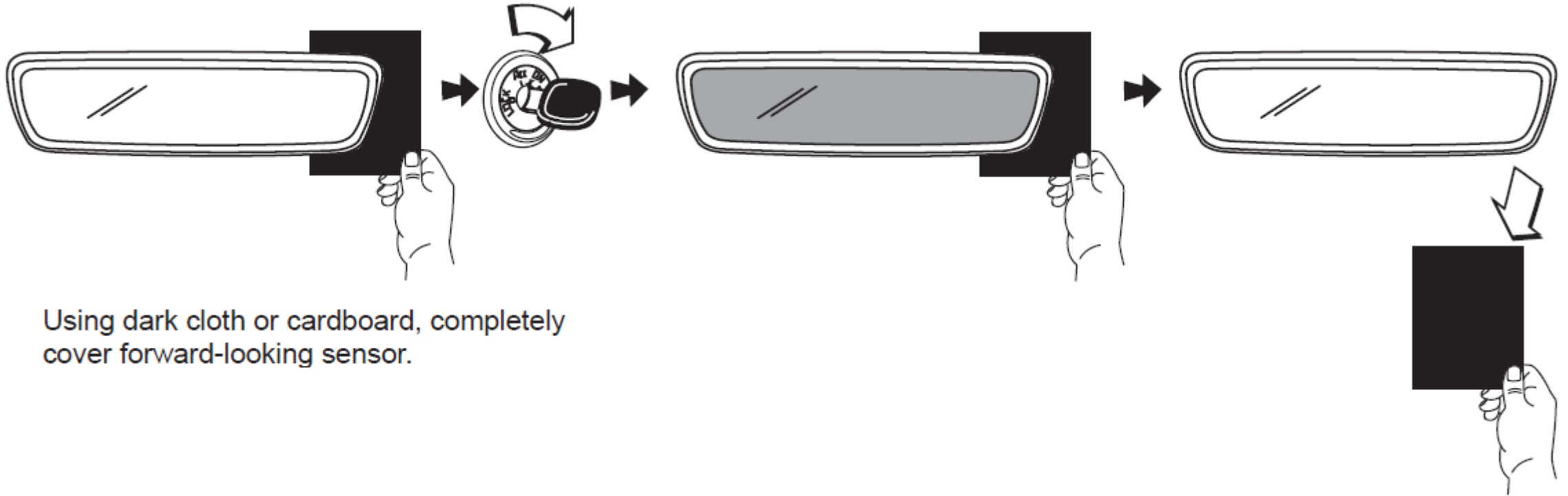
⚠ Carefully reinstall the negative battery cable to the battery stud only.

Torque mark the battery stud ⚠



2022MY WRX Interior Auto Dimming Compass Mirror Port Installation Instructions

Function Check



Using dark cloth or cardboard, completely cover forward-looking sensor.

2022MY WRX Interior Auto Dimming Compass Mirror Port Installation Instructions

Check Your Work

- ✔ Ensure the mirror is properly tightened to the windshield (CVT Models). Torque value 15.0-inch lbs. (13.3 – 17.7-inch lbs.).
- ✔ Ensure the battery negative terminal cable is properly reconnected. (Negative battery stud nut torque 5.5ft-lbs (66 in-lbs.).)
- ✔ Ensure the Bolt / Screw access cover is properly re-installed with no gaps around the panel (CVT Models).
- ✔ Ensure the overhead console cover is properly re-installed with no gaps at the headliner with no damage or chipped edges (CVT Models).
- ✔ Ensure the wiring cover (CVT Models) and mirror trim covers (6MT Models) are properly installed, seated properly at the mirror base and around the mirror connector.
- ✔ Turn the Ignition to the “ON” position and cover the interior mirror light sensor and ensure the interior mirror dims accordingly.
- ✔ With your foot on the brake pedal, put the gear selector in “R” mode and ensure the mirror un-dims.
- ✔ Ensure map lights turn on and off, door switch functions on and off and telematics illuminates (w/a).
- ✔ Ensure no soil marks or smudges are present in the installation area, etc. Clean as required.
- ✔ Ensure the mirror glass and windshield glass around the installation area is clean and the factory sticker is left in place on the mirror.

2022MY WRX Interior Auto Dimming Compass Mirror Port Installation Instructions

Document History

<u>Revision</u>	<u>Date</u>	<u>Slide#</u>	<u>Description</u>	<u>Author</u>
A	1/11/2022	N/A	Original Release	RM
B	3/16/2022	18, Multiple	Slide 18: Improved mirror trim removal method on non-EyeSight models. Multiple: minor photo and verbiage updates.	RM