



IMPREZA FOG LAMP KIT

INSTALLATION INSTRUCTION

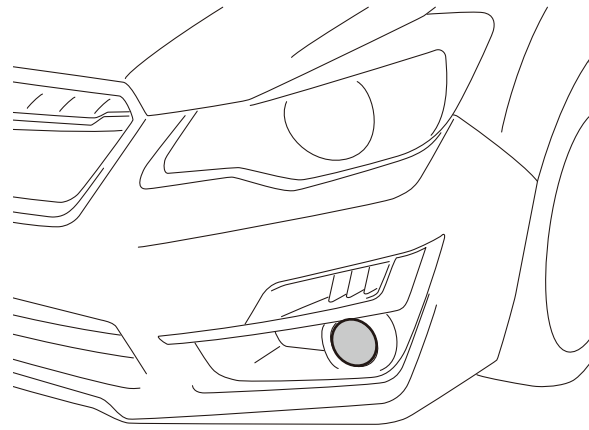
PART No. H4510FJ150/160



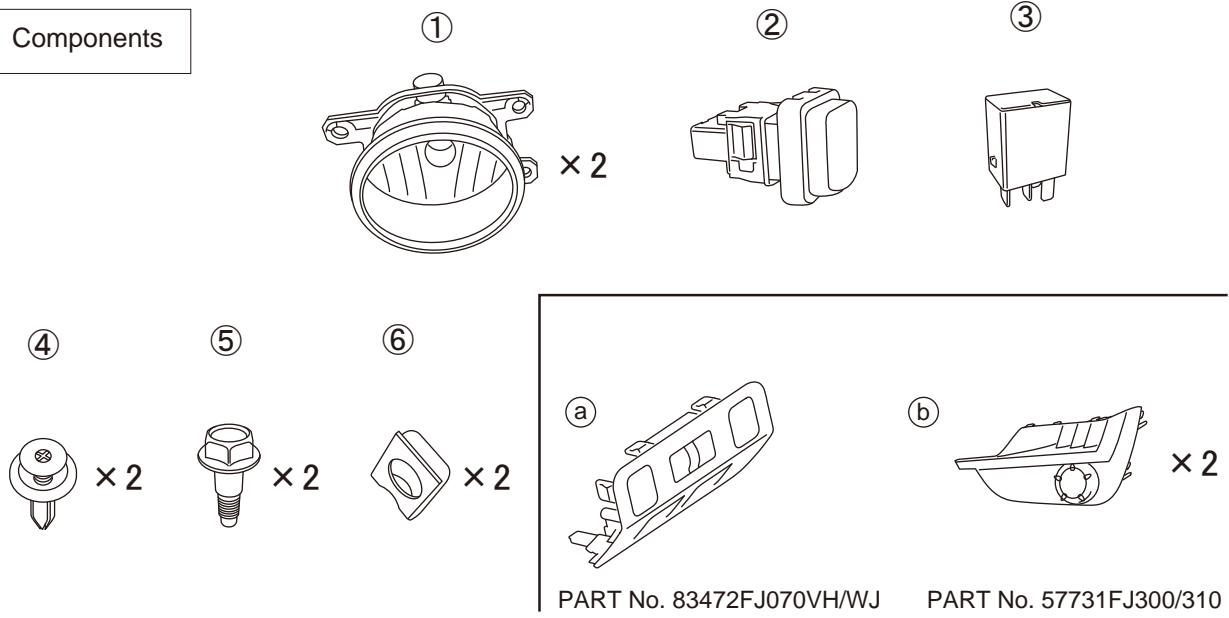
To technicians

IMPORTANT

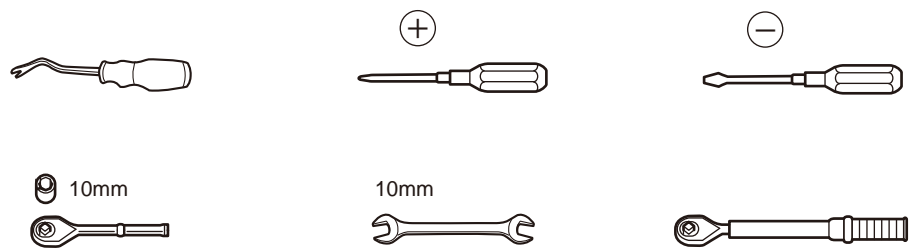
1. The installation should be carried out by an authorized Subaru dealer.
2. Pay special attention not to damage vehicle components when removing / installing them.
3. Route the wiring so that it cannot be abraded against any sharp edges.



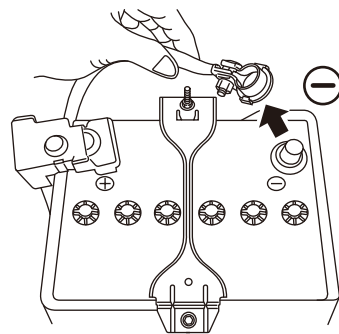
Components

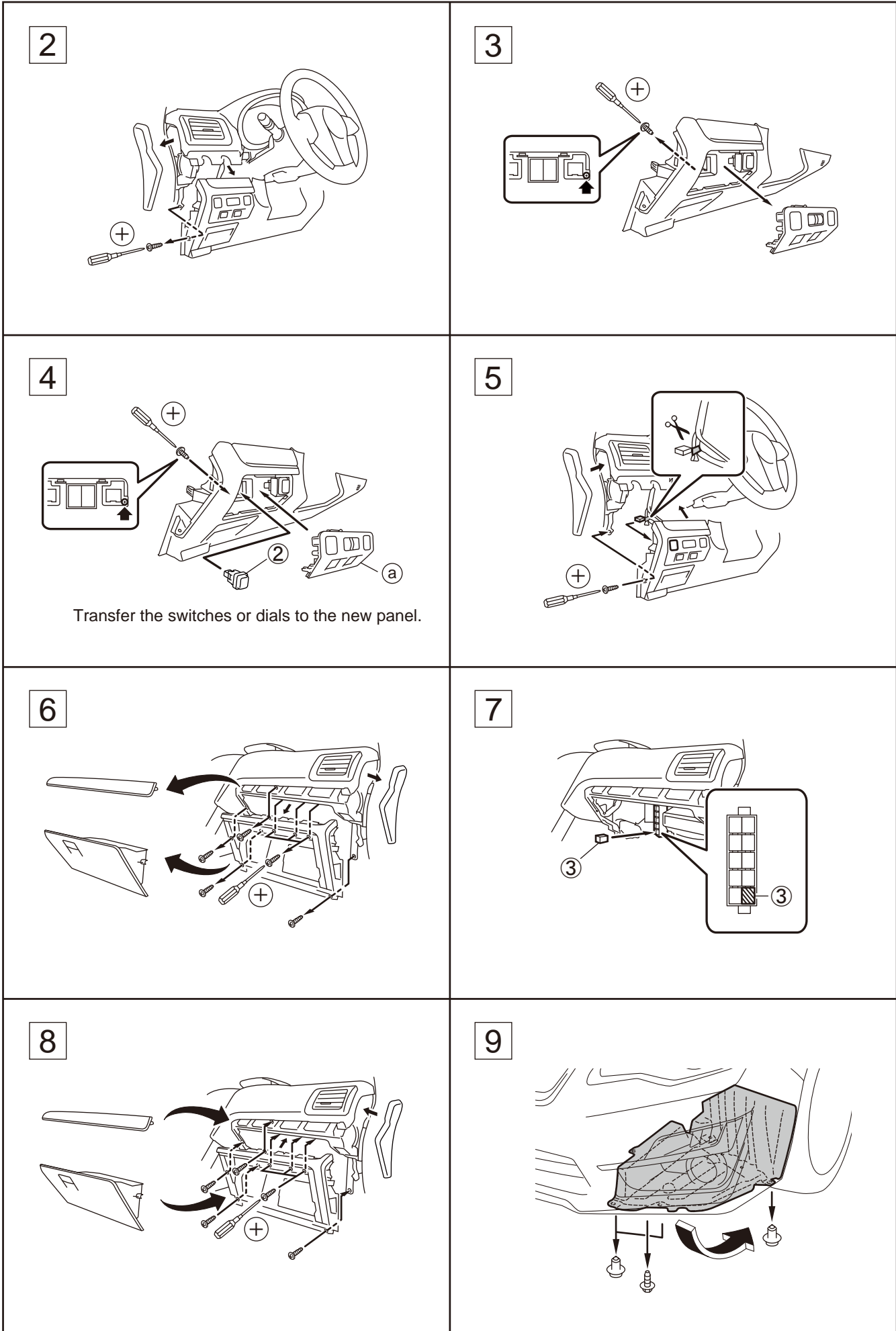


Tools



1





Transfer the switches or dials to the new panel.

