

INSTALLATION INSTRUCTIONS

DESCRIPTION: STI LEATHER SHIFT KNOB - MT

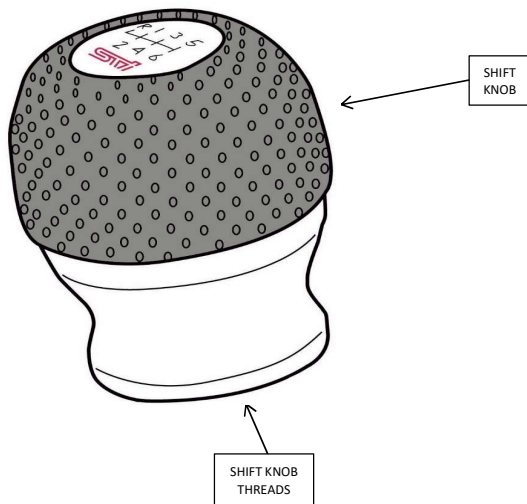


STI LEATHER SHIFT KNOB - MT

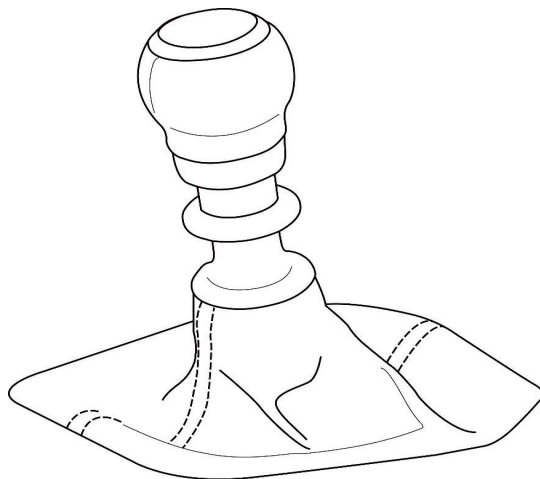
TOOLS REQUIRED:

None

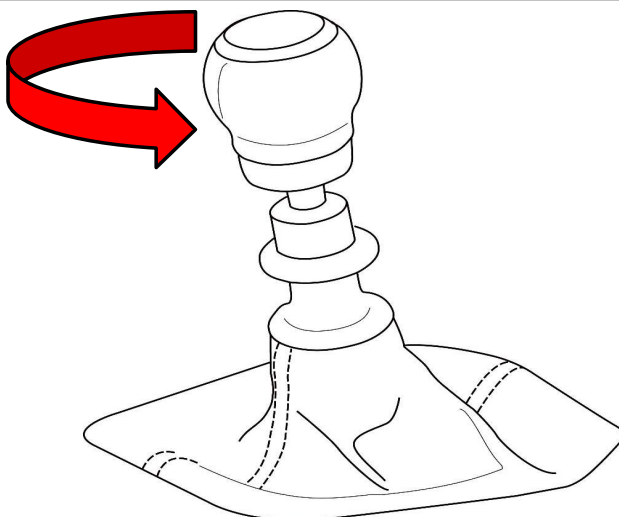
PARTS IDENTIFICATION:



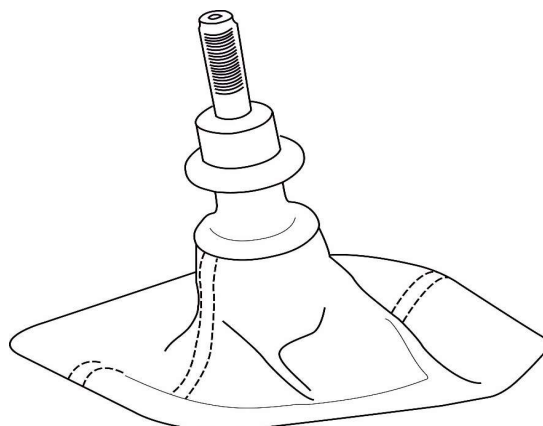
STEP 1: Park vehicle on level surface. Apply parking brake. Move shifter to neutral "N" and turn ignition off.



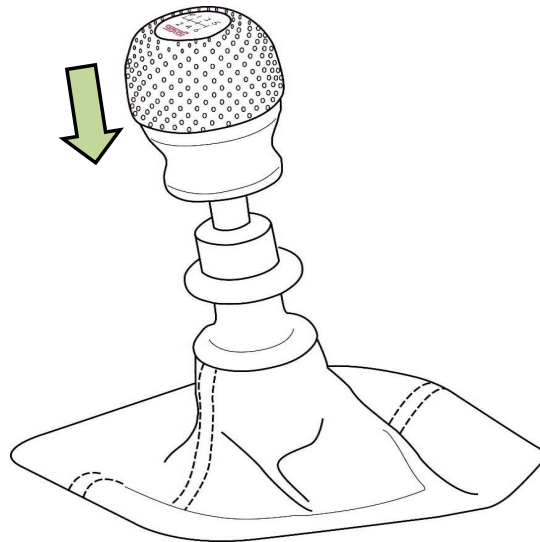
STEP 2: Unscrew the factory shift knob by turning counter-clockwise.



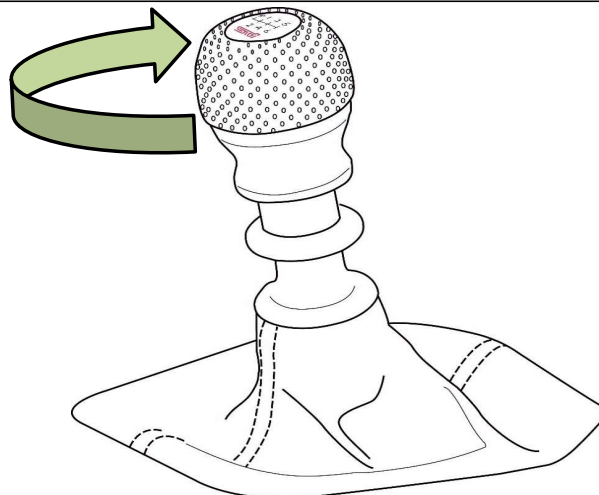
STEP 3: Remove the factory shift knob.



STEP 4: Gently position STI Leather Shift Knob on shift lever. Ensure knob is straight and level. **Note:** Do not tighten if the knob is crooked, doing so may damage the threads or cause them to crosstread.



STEP 5: Turn STI Leather Shift Knob clockwise until tight. Do not overtighten. If needed, turn the knob slightly counter-clockwise until the STI logo is in the correct orientation.



STEP 6: Check the operation of the shift lever by moving it through each gear including reverse. Installation Complete.

